

CITY OF PORTLAND  
OCEAN GATEWAY PHASE 1  
VEHICLE INSPECTION  
SECTIONS / DETAILS

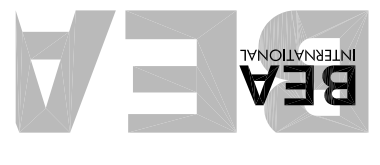
PROJ. MANAGER	PAUL POTTLER	BY	DATE
DESIGN-DETAILED			
CHECKED-REVIEWED			
DESIGN2-DETAILED2			
DESIGN3-DETAILED3			
REVISIONS 1	VAP 24 DESIGN CHANGE	10/15/05	
REVISIONS 2			
REVISIONS 3			
REVISIONS 4			
FIELD CHANGES			

SIGNATURE	<i>W.S. [Signature]</i>
P. LICENSE NUMBER	PE. 10709
DATE	10/15/05

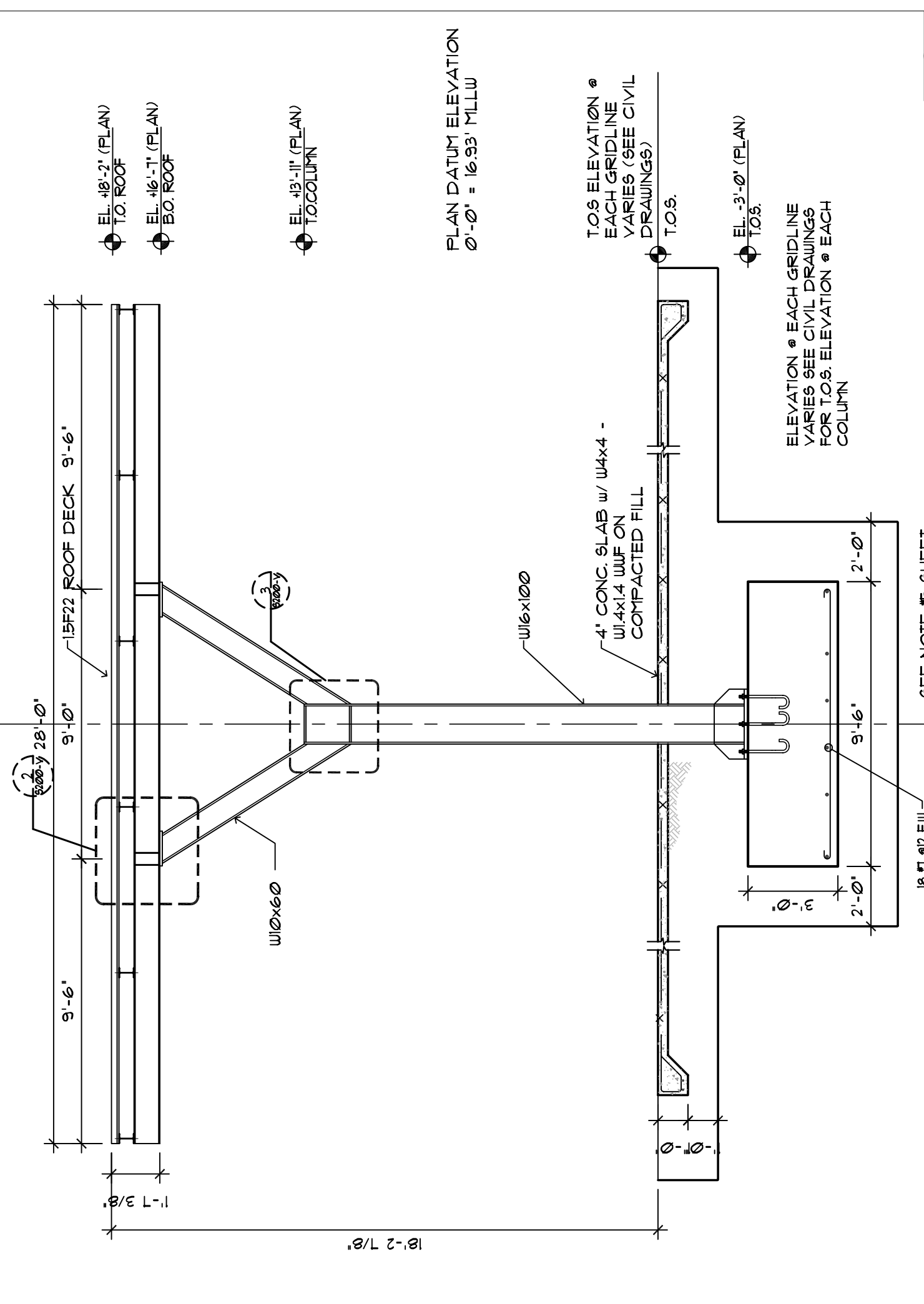


STATE OF MAINE  
DEPARTMENT OF TRANSPORTATION  
PROJECT NUMBER 009215.00  
PIN  
009215.00

IN ASSOCIATION WITH:  
GORRILL-PALMER CONSULTING ENGINEERS  
PERATROVICH, NOTTINGHAM, & DRAKE  
WINTON SCOTT ARCHITECTS  
HALEY & ALDRICH

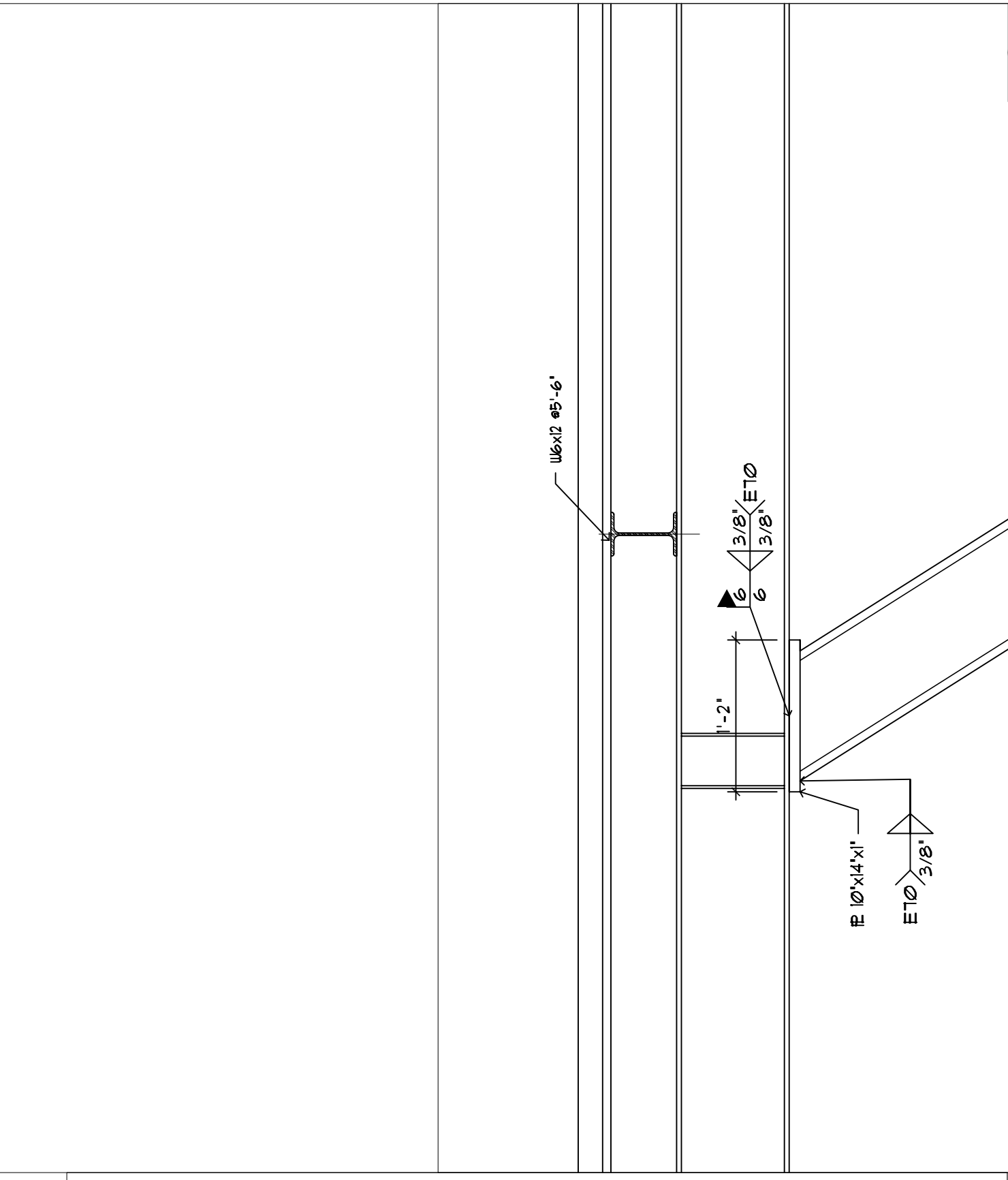


SECTION 1  
SCALE: 1/4" = 1'-0"



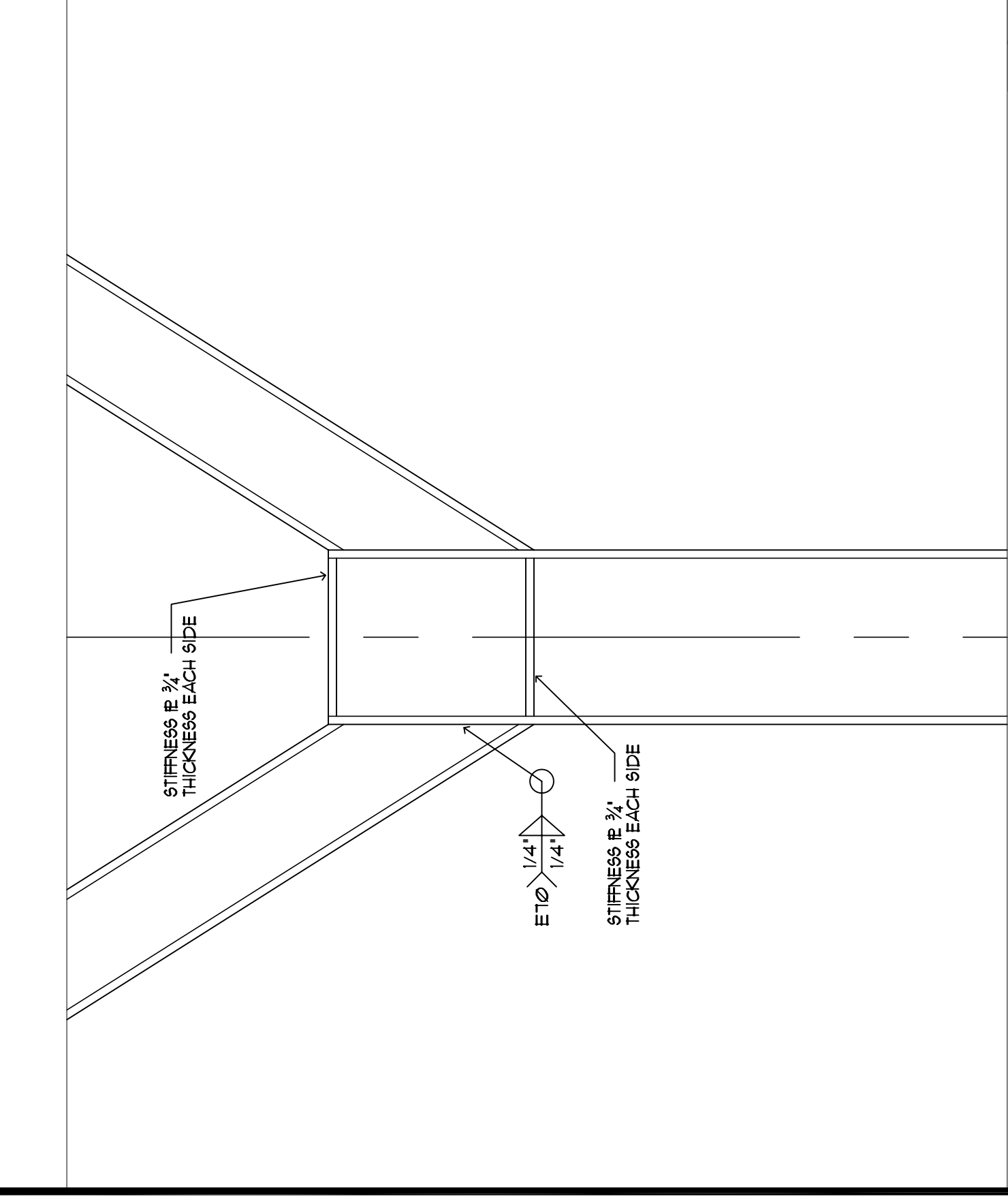
SECTION  
SCALE: 1/4" = 1'-0"

SECTION 2  
SCALE: 1/4" = 1'-0"



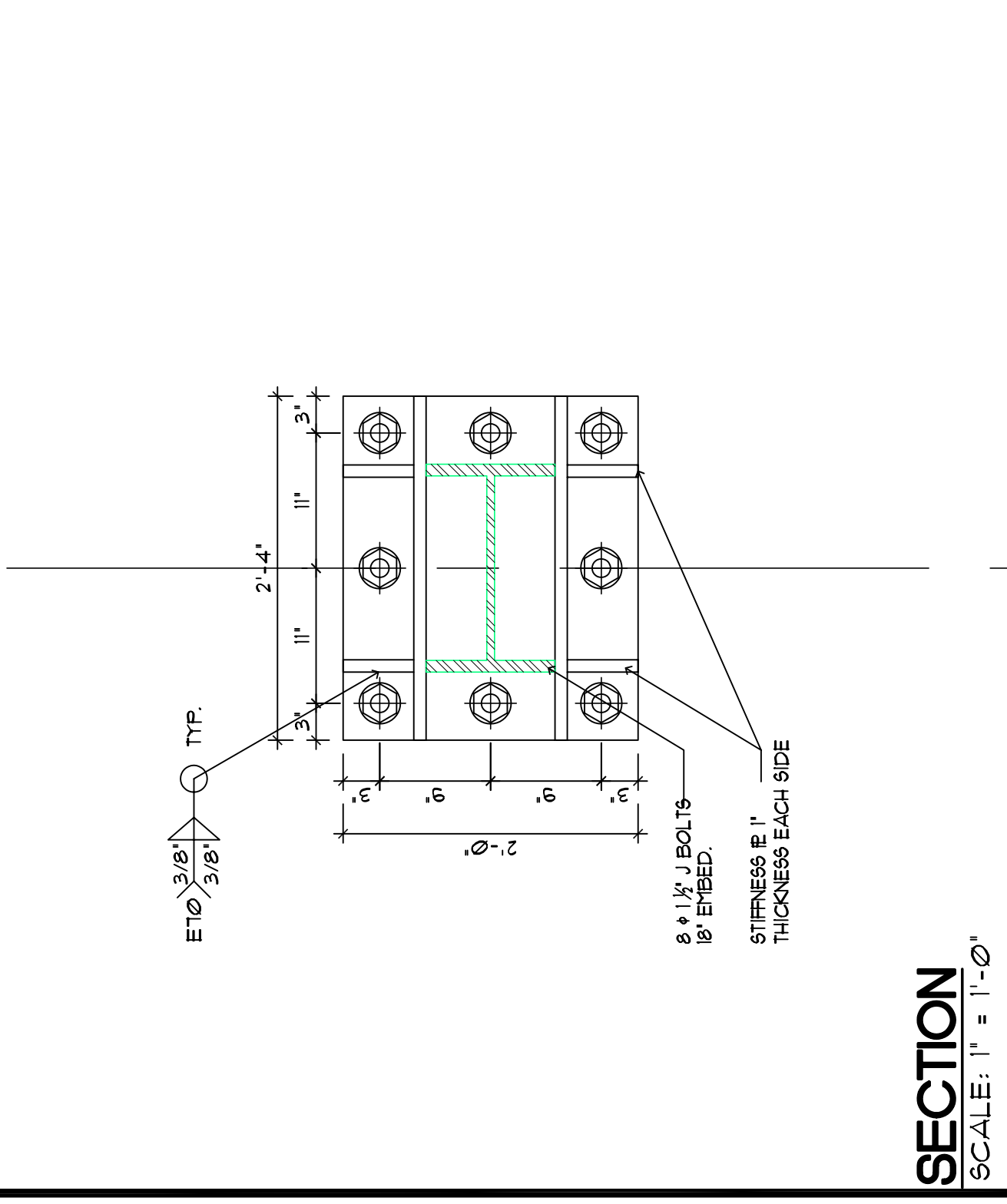
DETAIL  
SCALE: 1" = 1'-0"

SECTION 3  
SCALE: 1/4" = 1'-0"



DETAIL  
SCALE: 1" = 1'-0"

SECTION 1  
SCALE: 1/4" = 1'-0"



SECTION  
SCALE: 1/4" = 1'-0"