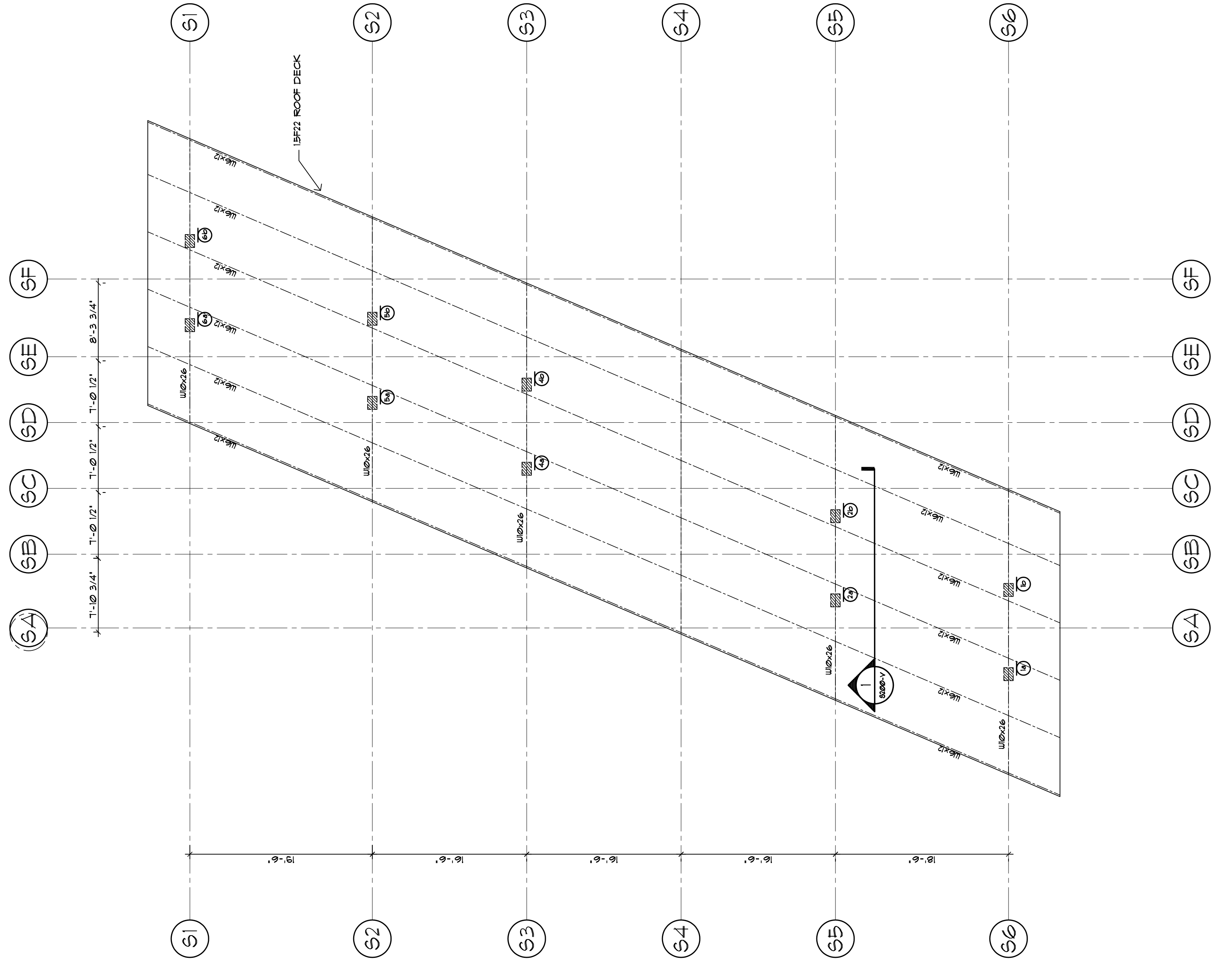
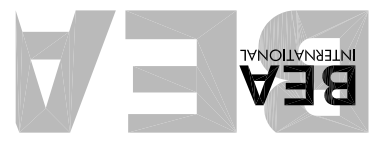




PROJ. MANAGER	PAUL POTTLE	BY	DATE
DESIGN-DETAILED			
CHECKED-REVIEWED			
DESIGN2-DETAILED2			
DESIGN3-DETAILED3			
REVISIONS 1			
REVISIONS 2			
REVISIONS 3			
REVISIONS 4			
FIELD CHANGES			

CITY OF PORTLAND
OCEAN GATEWAY PHASE 1
VEHICLE INSPECTION
ROOF FRAMING PLAN

IN ASSOCIATION WITH:
GORRILL-PALMER CONSULTING ENGINEERS
PERATROVICH, NOTTINGHAM, & DRAGE
WINTON SCOTT ARCHITECTS
HALEY & ALDRICH

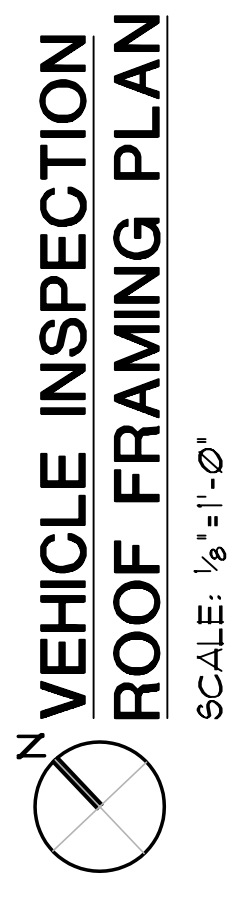


NOTE

- DESIGN LOAD:
ROOF LIVE LOAD 20 PSF
SNOW LOAD 30 PSF
WIND LOAD 20 PSF
- IN CASE A MANUFACTURER IS TO PROVIDE A COMPLETE ROOF STRUCTURE TO REPLACE THE DESIGN SHOWN ON THIS PLAN, SIGNED AND SEALED SHOP DRAWINGS, IN COMPLIANCE WITH DESIGN LOAD CRITERIA HEREIN, MUST BE SUBMITTED TO BEA FOR REVIEWED AND APPROVED.

LEGEND:

- DENOTES COLUMN AT THIS LEVEL.
- ▨ DENOTES COLUMN ENDS BELOW THIS LEVEL.



VEHICLE INSPECTION
ROOF FRAMING PLAN
SCALE: 1/8" = 1'-0"