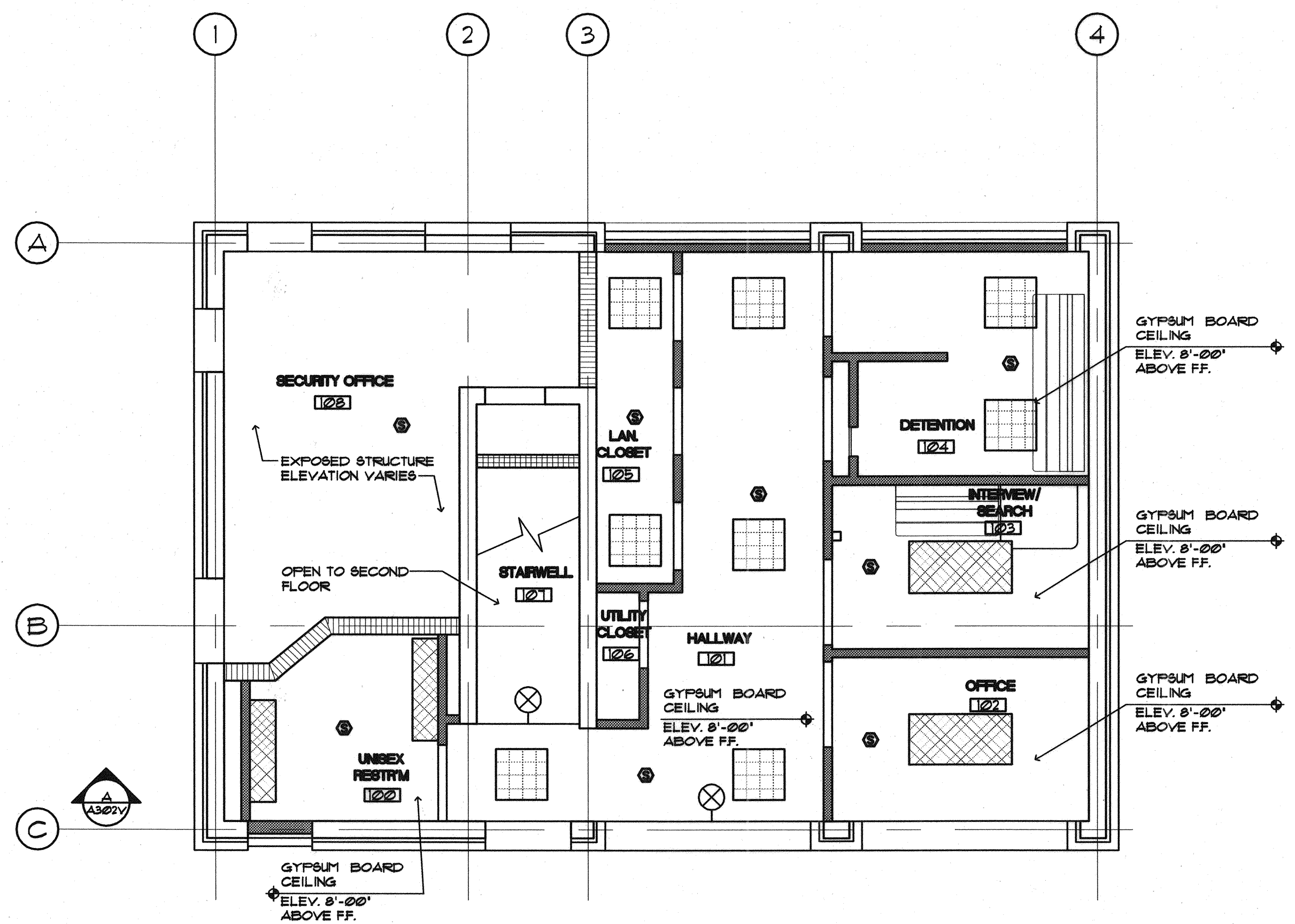


SIGNATURE
 P. LICENCE NUMBER
 ARC 2644
 DATE
 10/8/2004

PROJ. MANAGER	PAUL POTTLE	DATE
DESIGN-DETAILED		
CHECKED-REVIEWED		
DESIGN-DETAILED2		
DESIGN-DETAILED3		
REVISIONS 1		
REVISIONS 2		
REVISIONS 3		
REVISIONS 4		
FIELD CHANGES		

CITY OF PORTLAND
 OCEAN GATEWAY PHASE 1
 REFLECTED CEILING PLAN

A700-V



FIRST FLOOR REFLECTED CEILING PLAN
 SCALE: 1/8"=1'-0"

A1 RECESSED 2 x 4 FLUORESCENT TROFFER WITH GRID CEILING FRAME	HVAC DIFFUSER
A2 RECESSED 2 x 2 FLUORESCENT TROFFER WITH GRID CEILING FRAME	HVAC RETURN AIR GRILLE
A3 RECESSED 2 x 2 FLUORESCENT TROFFER WITH GRID FLUCH FRAME	SPRINKLER HEAD
A4 2'x4' FLUORESCENT LIGHT FIXTURE	CEILING MOUNTED EXIT LIGHT FIXTURE
A6 METAL HALIDE LIGHT FIXTURE W/ PRISMATIC ACRYLIC REFRACTOR	WALL MOUNTED EXIT LIGHT FIXTURE
A7 METAL HALIDE LIGHT FIXTURE W/ PRISMATIC ACRYLIC REFRACTOR	S1B WALL MOUNTED EXIT LIGHT FIXTURE
J1 SURFACE CEILING FLUORESCENT FIXTURE WITH PRISMATIC ACRYLIC LENCE	E2 WALL MOUNTED EXIT LIGHT FIXTURE