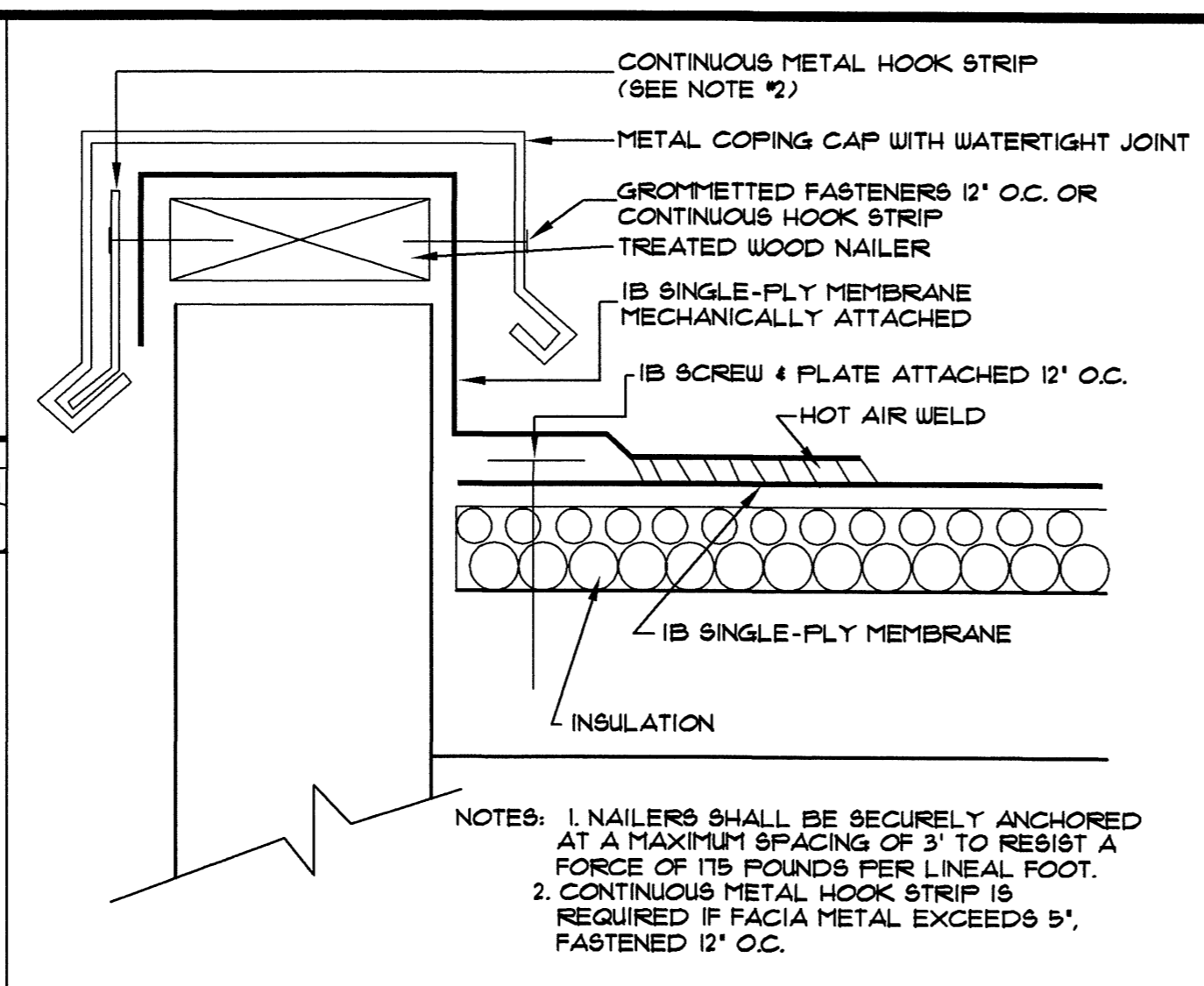
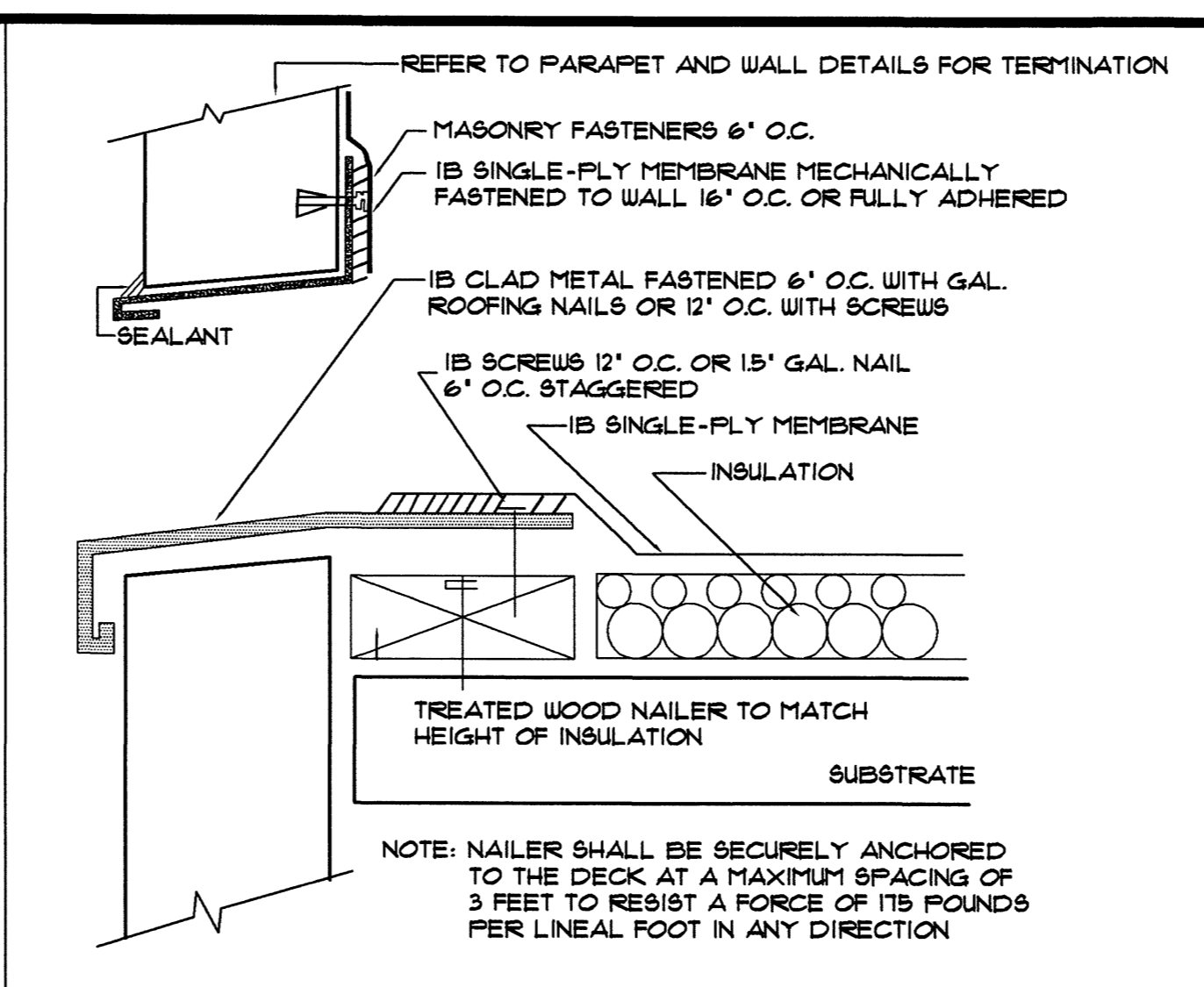


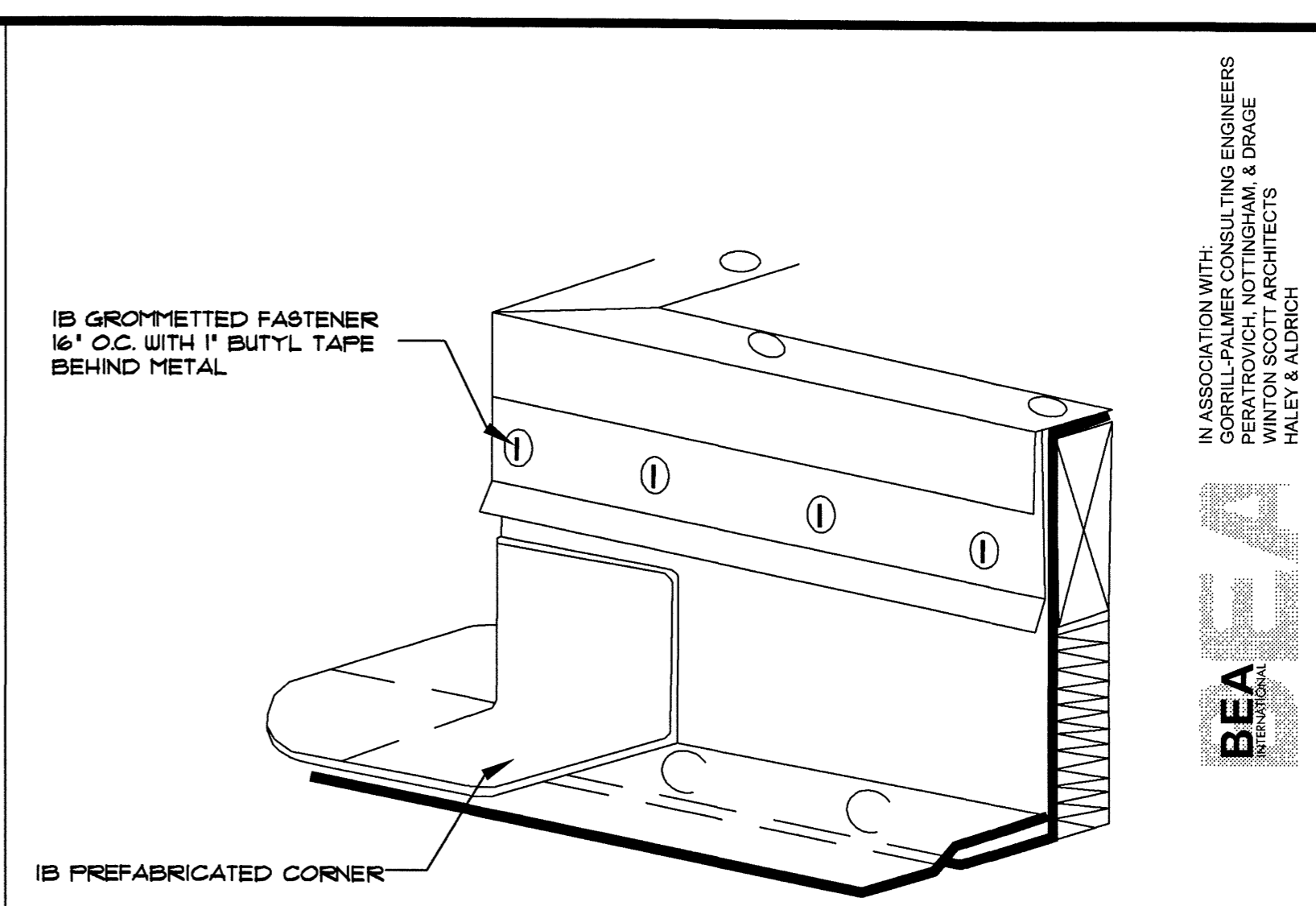
**1 DRAIN AND MEMBRANE DETAIL**  
SCALE: 3" = 1'-0"



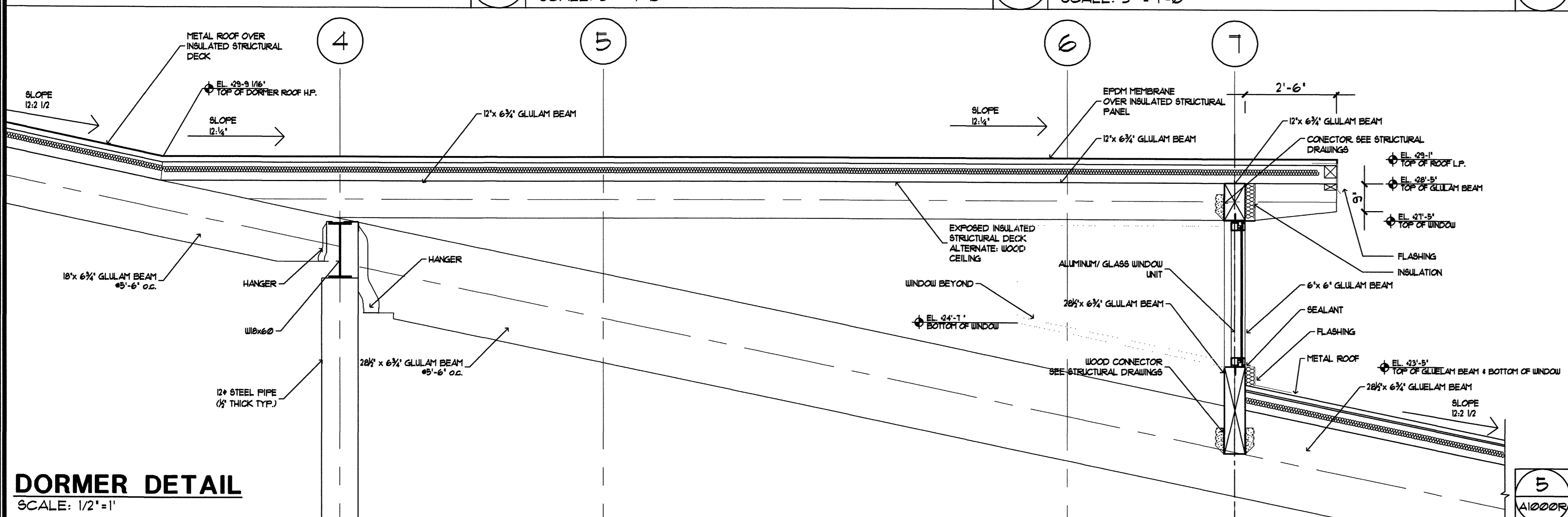
**2 PARAPET DETAIL**  
SCALE: 3" = 1'-0"



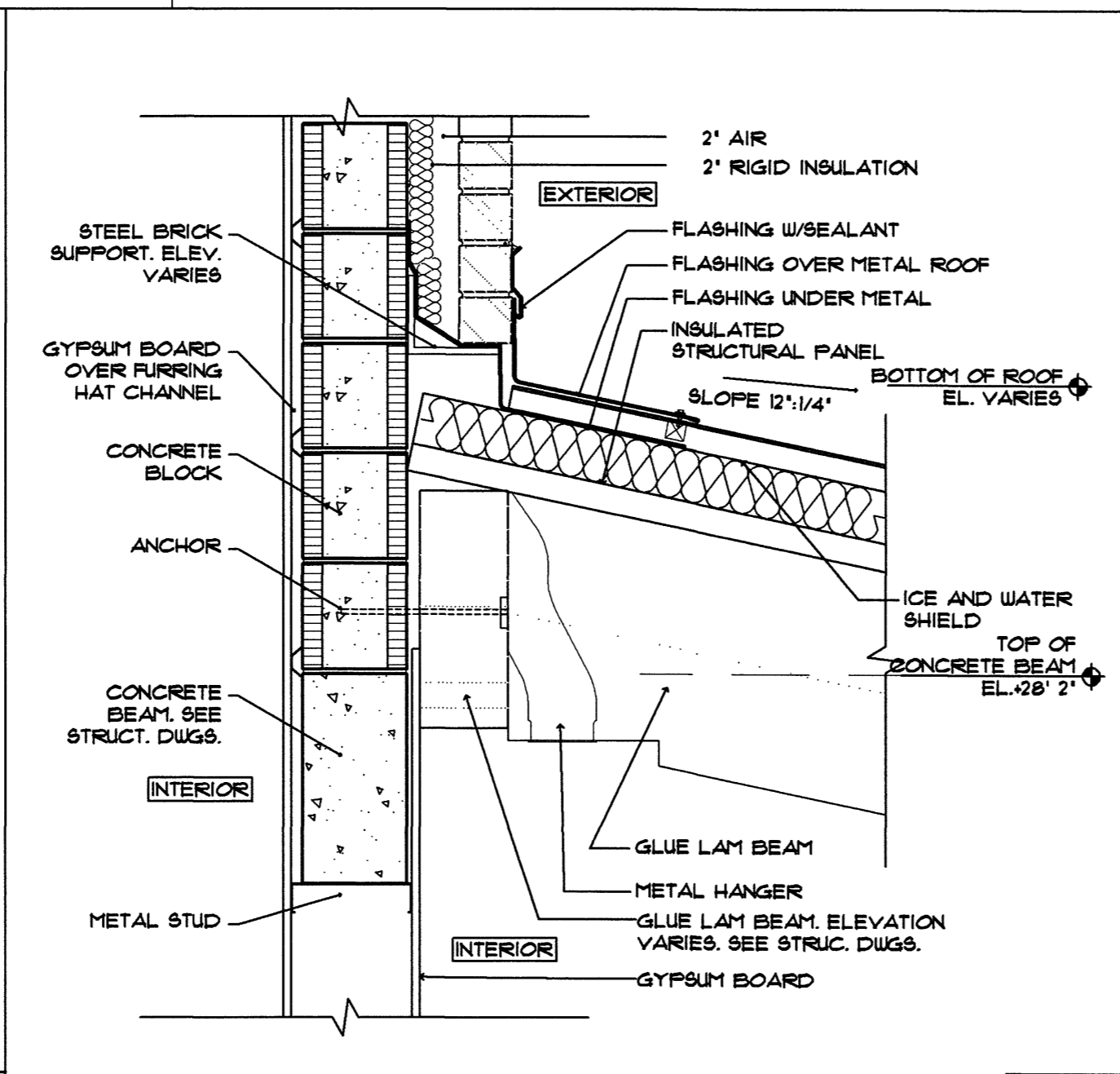
**3 THRU WALL SCUPPER**  
SCALE: 3" = 1'-0"



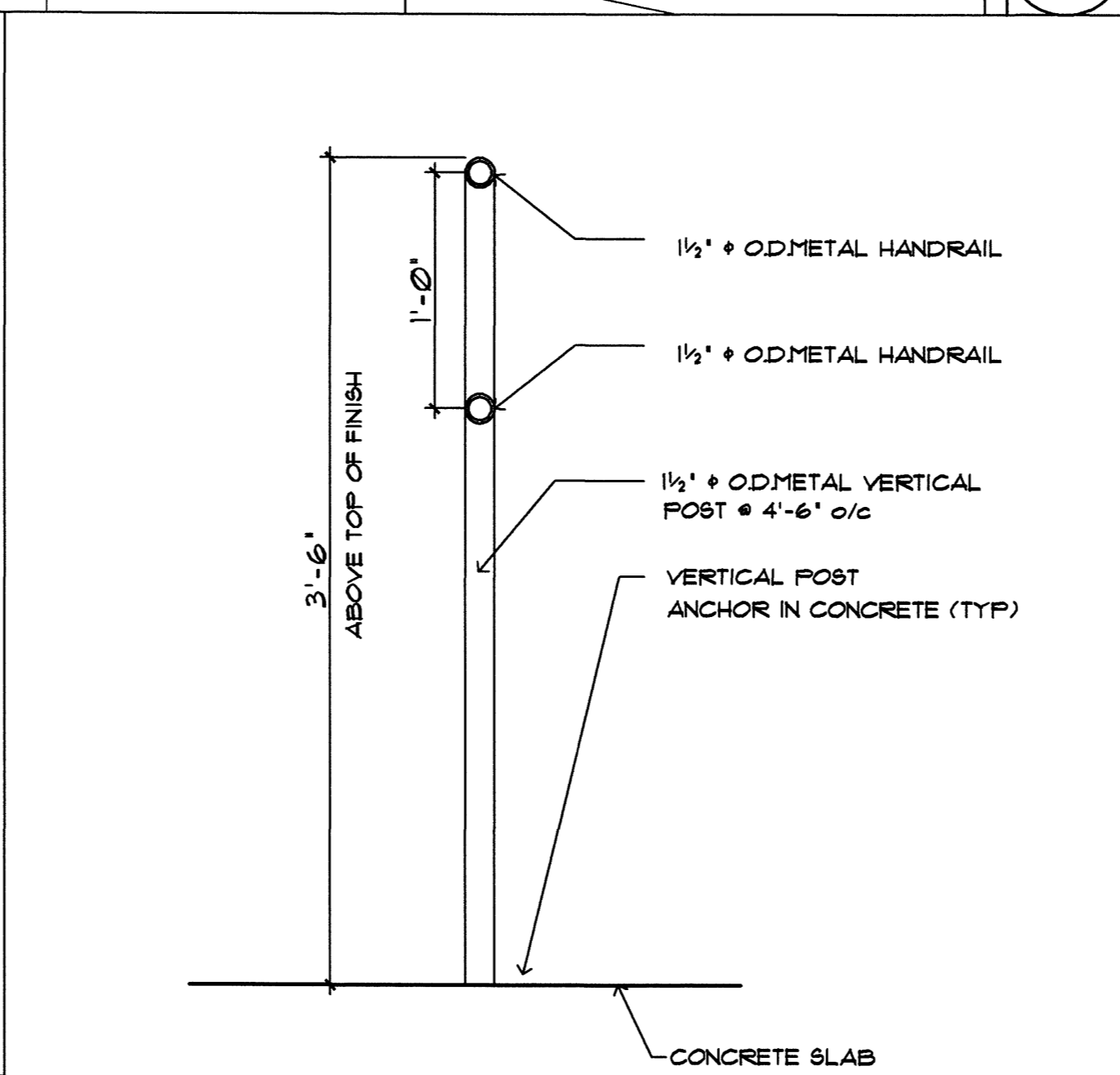
**4 HVAC CURB OUTSIDE CORNER DETAIL**  
SCALE: N.T.S.



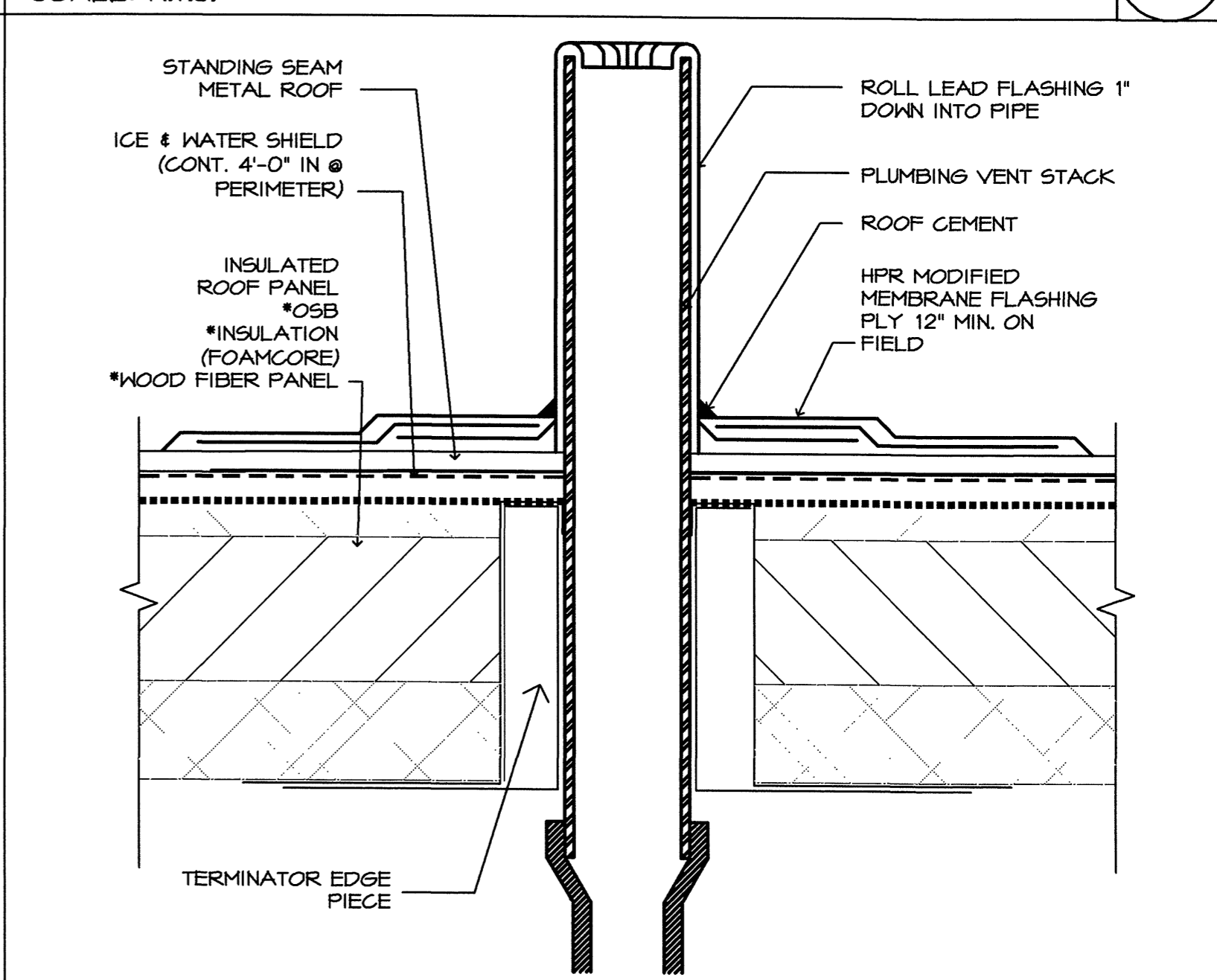
**5 DORMER DETAIL**  
SCALE: 1/2" = 1'



**6 HANDICAPED RAMP**  
SCALE: N.T.S.



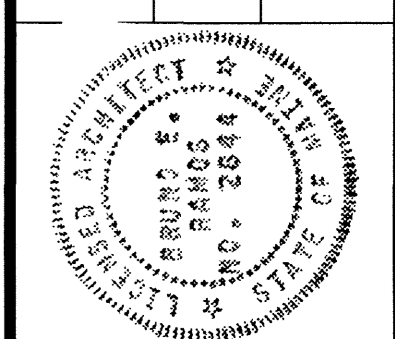
**7 ROOF DETAIL**  
SCALE: 1" = 1'-0"



**8 RAILING DETAIL TYP. B**  
SCALE: 1 1/2" = 1'-0"

IN ASSOCIATION WITH:  
BEA CONSULTING ENGINEERS  
PERMIT NO. 2003-0001  
WINTON SCOTT ARCHITECTS  
HALEY & ALDRICH

STATE OF MAINE  
DEPARTMENT OF TRANSPORTATION  
PROJECT NUMBER 009215.00  
PIN 009215.00



PROJ. MANAGER	PAUL POTTLE	DATE	4/27/05
DESIGN-DETAILED		BY	
CHECKED-REVIEWED		DATE	
DESIGN-DETAILED02		DATE	
DESIGN-DETAILED03		DATE	
REVISIONS 1	ADDED DETAILS	P. LICENSE NUMBER	ARC 2644
REVISIONS 2		DATE	10/8/2004
REVISIONS 3			
REVISIONS 4			
FIELD CHANGES			

CITY OF PORTLAND  
OCEAN GATEWAY PHASE 1  
DETAILS