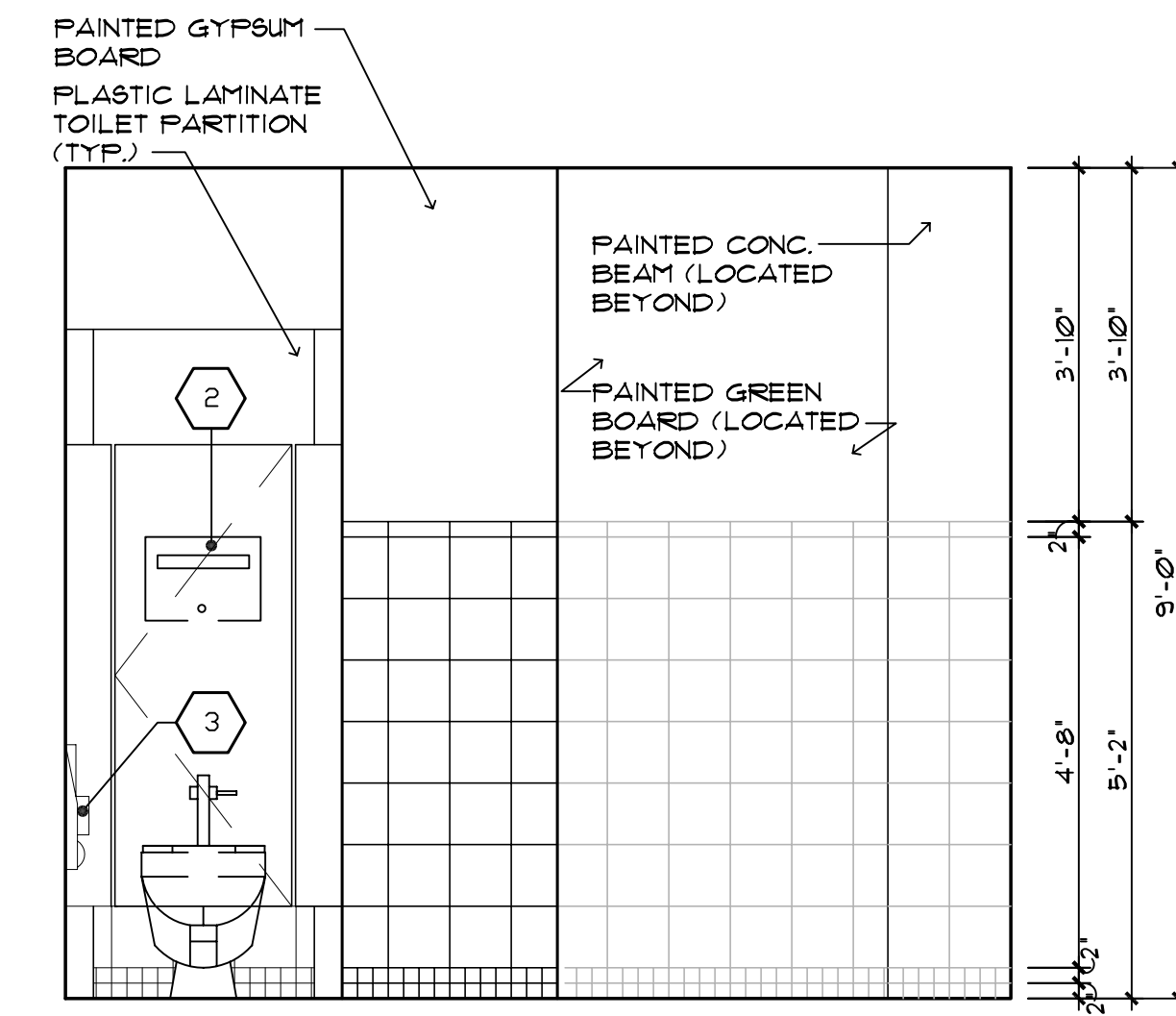


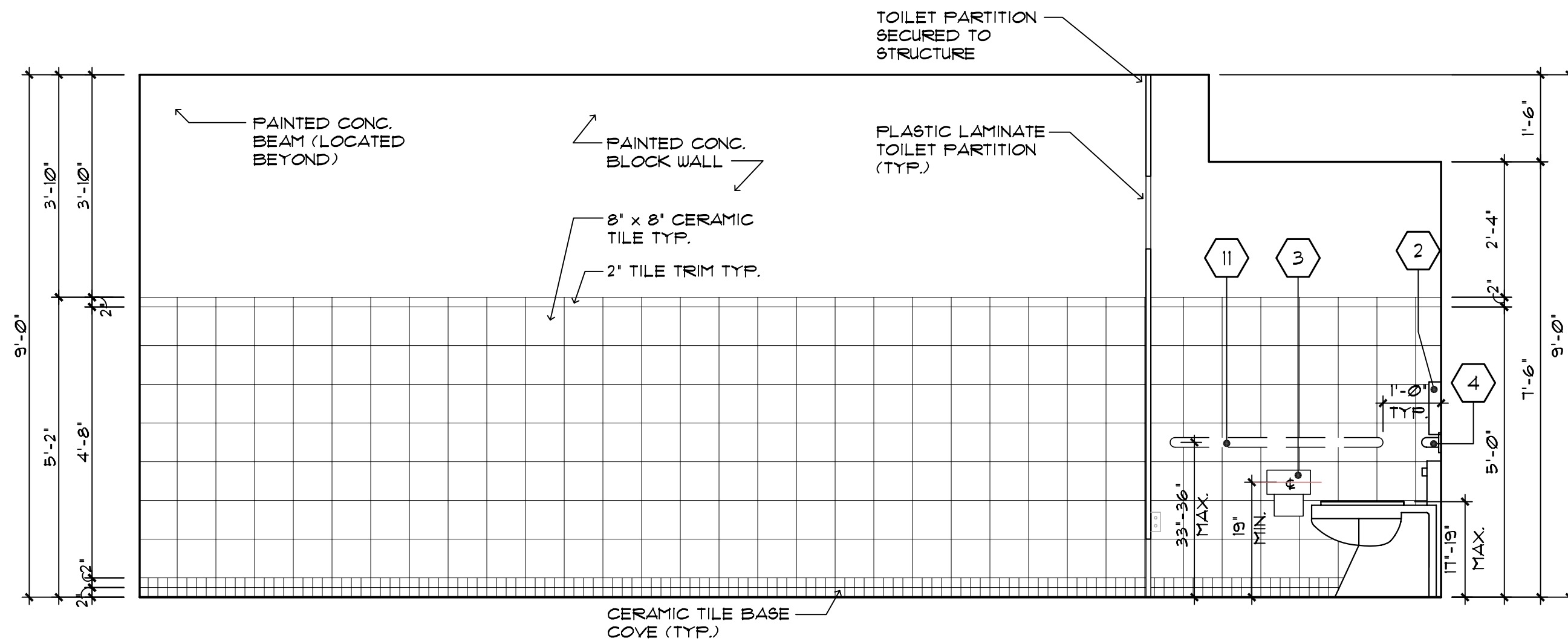
5 WOMEN'S RESTROOM ELEVATION
SCALE: 1/2" = 1'-0"

#	DESCRIPTION	MOUNTING HEIGHT AFF. UNLESS OTHERWISE NOTED
1	LAVATORY MOUNTED LATHER SOAP VALVE	HCF COUNTER STD. HEIGHT
2	RECESSED TOILET SEAT COVER DISPENSER	HCF 44 1/2" T.O.U. STD. 60" T.O.U.
3	TOILET PAPER HOLDER FOR TWO ROLLS	HCF 18" B.O.U. STD. 33" T.O.U.
4	36" STAINLESS STEEL GRAB BAR 1 1/2" DIAMETER CONCEALED MOUNTING	HCF STD. 33" T.O.U.
5	RECESSED NAFKIN - TAMPON DISPENSER	HCF 52" T.O.U. STD. 69" T.O.U.
6	HANDICAP MIRROR	HCF 40" B.O.U. STD. N/A
7	RECESSED COMBINATION PAPER TOWEL DISPENSER AND WASTE RECEPTACLE	HCF 52 3/4" T.O.U. STD. 11" T.O.U.
8	COAT HOOK & BUMPER	HCF 3'-6" STD. 5'-0"
9	SURFACE MOUNTED PAPER TOWEL DISPENSER	HCF 3'-10" T.O.U. STD. N/A
10	SURFACE MOUNTED WASTE RECEPTACLE	HCF 2'-2" T.O.U. STD. N/A
11	42" STAINLESS STEEL GRAB BAR 1 1/2" DIAMETER CONCEALED MOUNTING	HCF 33" T.O.U. STD.
12	MIRROR	HCF ----- STD. ---
13	SURFACE MOUNTED LATHER SOAP DISPENSER	HCF 44" B.O.U. STD. 44" MAX. B.O.U.

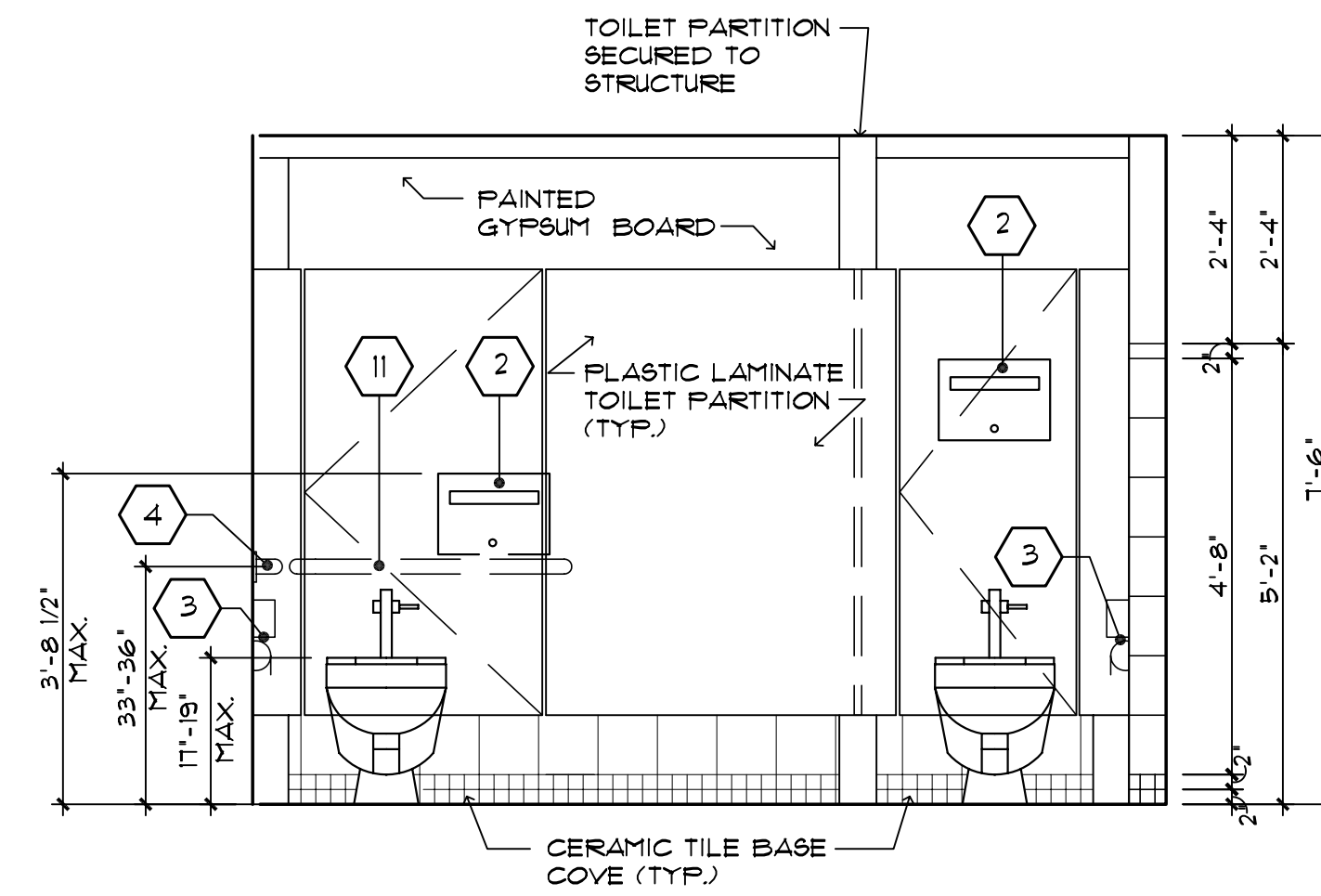
NOTES: T.O.U. = TOP OF UNIT HCF = HANDICAPPED B.O.U. = BOTTOM OF UNIT AFF. = ABOVE FINISHED FLOOR



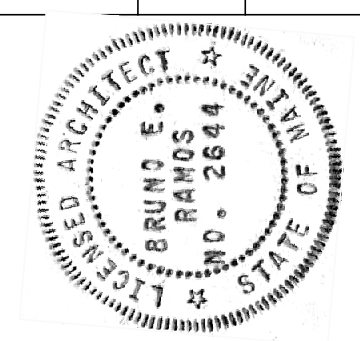
6 WOMEN'S RESTROOM ELEVATION
SCALE: 1/2" = 1'-0"



7 MEN'S RESTROOM ELEVATION
SCALE: 1/2" = 1'-0"



8 MEN'S RESTROOM ELEVATION
SCALE: 1/2" = 1'-0"



SIGNATURE
P. LICENCE NUMBER
DATE 12/23/05

PROJ. MANAGER	PAUL POTTLE	DATE
DESIGN-DETAILED		
CHECKED-REVIEWED		
DESIGN2-DETAILED2		
DESIGN3-DETAILED3		
REVISIONS 1	VAAP 22 DESIGN CHANGE 10/15/05	12/23/05
REVISIONS 2	VAAP-VE-CODE CHANGES	
REVISIONS 3		
REVISIONS 4		
REVISIONS 5		
FIELD CHANGES		