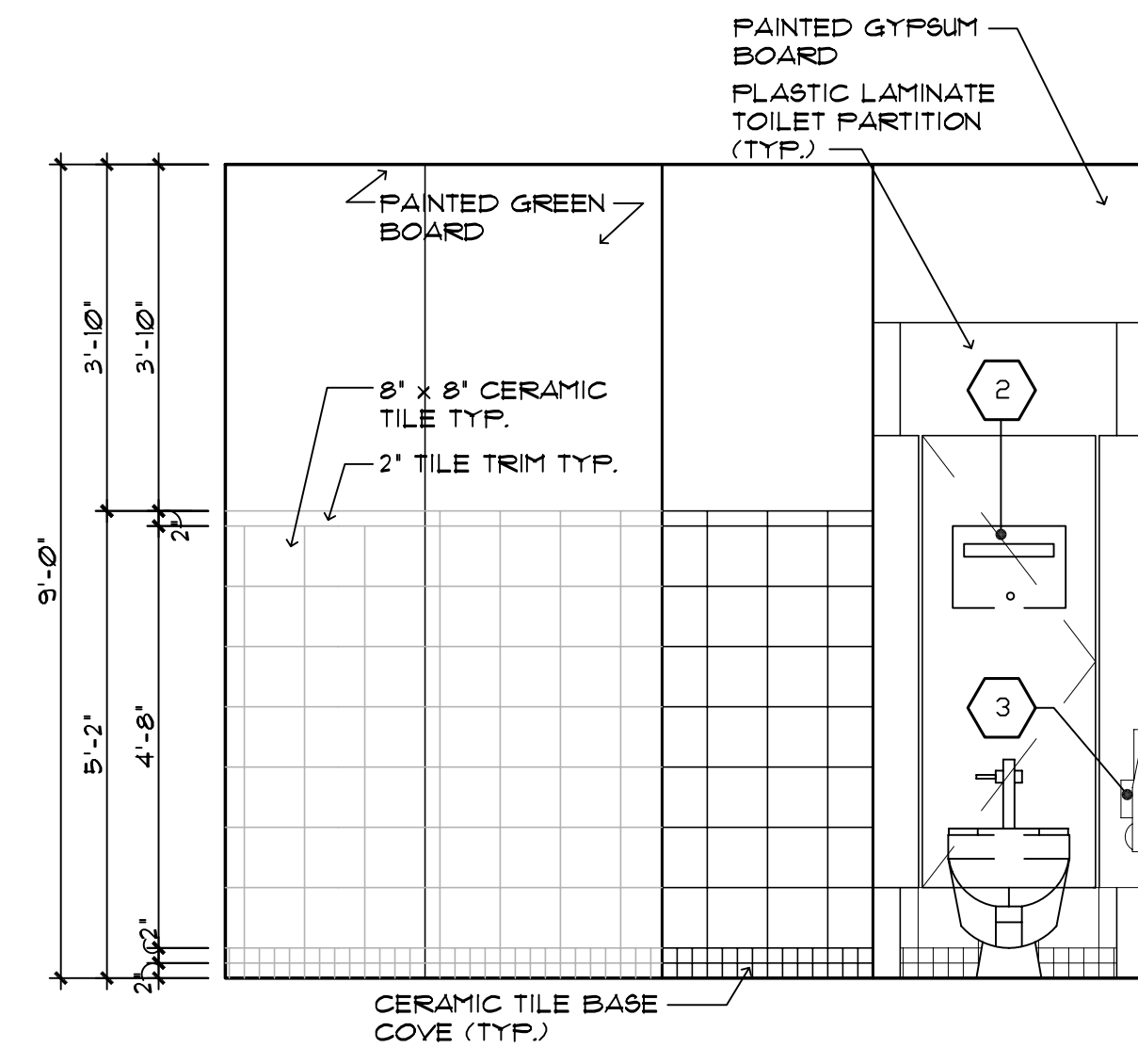


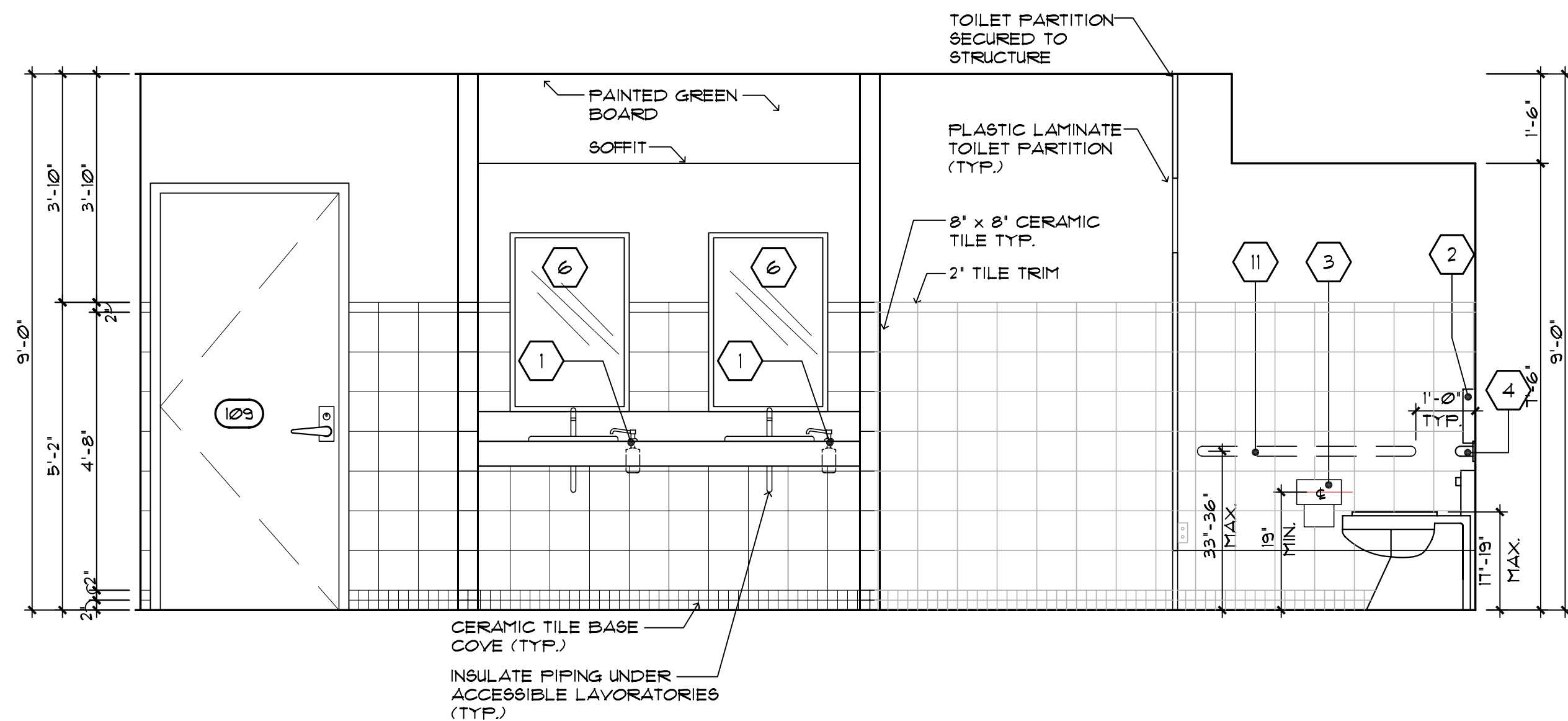
**1 MEN'S RESTROOM ELEVATION**  
SCALE: 1/2" = 1'-0"

RESTROOM ACCESSORIES		
#	DESCRIPTION	MOUNTING HEIGHT AFF. UNLESS OTHER-WISE NOTED
1	LAVATORY MOUNTED LATHER SOAP VALVE	HCP COUNTER STD HEIGHT
2	RECESSED TOILET SEAT COVER DISPENSER	HCP 44 1/2" T.O.U. STD 60" T.O.U.
3	TOILET PAPER HOLDER FOR TWO ROLLS	HCP 10" B.O.U. STD 31" T.O.U.
4	36" STAINLESS STEEL GRAB BAR 1 1/2" DIAMETER CONCEALED MOUNTING	HCP 33" T.O.U. STD
5	RECESSED NAPKIN - TAMPON DISPENSER	HCP 52" T.O.U. STD 69" T.O.U.
6	HANDICAP MIRROR	HCP 40" B.O.U. STD N/A
7	RECESSED COMBINATION PAPER TOWEL DISPENSER AND WASTE RECEPTACLE	HCP 52 3/4" T.O.U. STD 11" T.O.U.
8	COAT HOOK & BUMPER	HCP 3'-6" STD 5'-0"
9	SURFACE MOUNTED PAPER TOWEL DISPENSER	HCP 3'-10" T.O.U. STD N/A
10	SURFACE MOUNTED WASTE RECEPTACLE	HCP 2'-2" T.O.U. STD N/A
11	42" STAINLESS STEEL GRAB BAR 1 1/2" DIAMETER CONCEALED MOUNTING	HCP 33" T.O.U. STD
12	MIRROR	HCP ----- STD ---
13	SURFACE MOUNTED LATHER SOAP DISPENSER	HCP 44" B.O.U. STD 44" MAX. B.O.U.

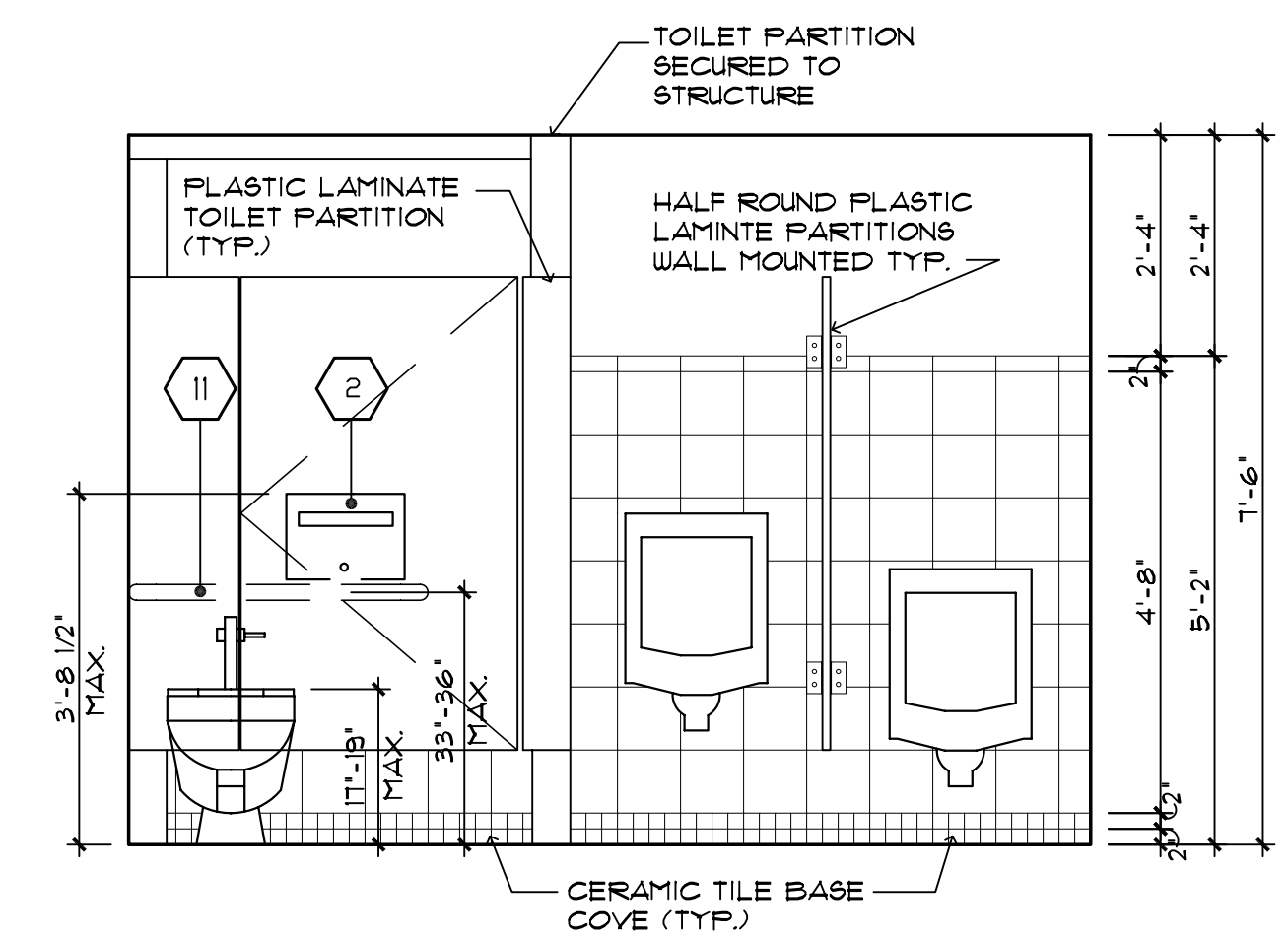
NOTES: T.O.U. = TOP OF UNIT B.O.U. = BOTTOM OF UNIT HCP = HANDICAPPED AFF. = ABOVE FINISHED FLOOR



**2 MEN'S RESTROOM ELEVATION**  
SCALE: 1/2" = 1'-0"



**3 MEN'S RESTROOM ELEVATION**  
SCALE: 1/2" = 1'-0"



**4 MEN'S RESTROOM ELEVATION**  
SCALE: 1/2" = 1'-0"

STATE OF MAINE  
DEPARTMENT OF TRANSPORTATION  
PROJECT NUMBER 009215.00  
PIN 009215.00  
DATE 12/23/05

PROJ. MANAGER	PAUL POTLIE	DATE
DESIGN-DETAILED		
CHECKED-REVIEWED		
DESIGN2-DETAILED2		
DESIGN3-DETAILED3		
REVISIONS 1	VAAP 22 DESIGN CHANGE 10/15/05	12/23/05
REVISIONS 2	VAAP-VE-CODE CHANGES	
REVISIONS 3		
REVISIONS 4		
REVISIONS 5		
FIELD CHANGES		

CITY OF PORTLAND  
OCEAN GATEWAY PHASE 1  
RESTROOMS ELEVATION