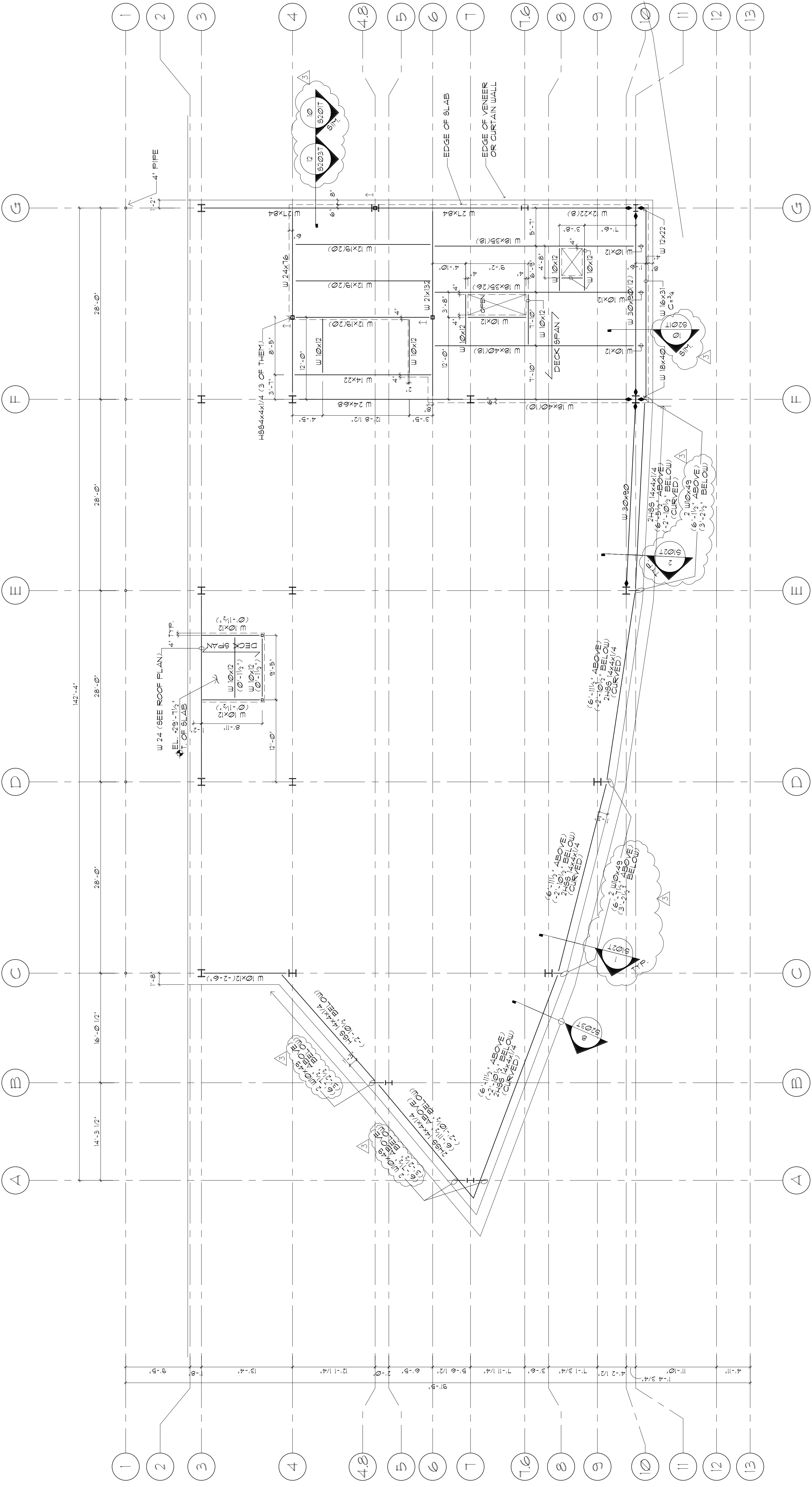




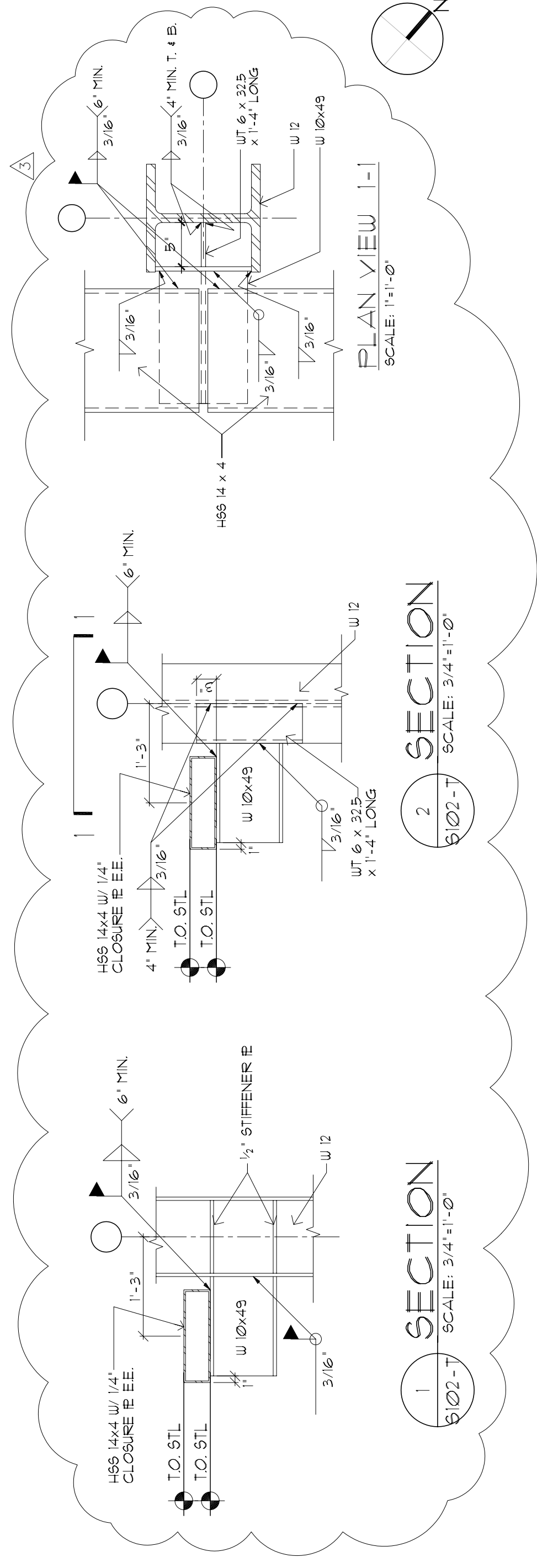
DATE	10/15/05
REVISIONS	4
REVISIONS	3
REVISIONS	2
REVISIONS	1
DESIGN-DETAILED	
CHECKED-REVIEWED	
DESIGN-DETAILED	
PROJ. MANAGER PAUL POTTLE	BY
DATE	
SIGNATURE	
P. LICENSE NUMBER	10709

CITY OF PORTLAND
OCEAN GATEWAY PHASE 1
TERMINAL BUILDING
MEZZANINE FRAMING PLAN



FLOOR FRAMING NOTES (STEEL)

- DESIGN FLOOR LIVE LOADS 200psf
NO LIVE LOAD REDUCTION PERMITTED.
- FLOOR CONSTRUCTION: 3 1/2" INCHES OF NORMAL WEIGHT CONCRETE FILL WITH 6" X 6" W/4 X W/4 W/UF ON 2" INCH DEEP COMPOSITE METAL FLOOR DECK. OVERALL THICKNESS = 5-1/2" INCHES UNO.
- TOP OF SLAB ELEVATION (T.O.S.) = 29'-6", UNO. SEE ARCHITECTURAL AND MECHANICAL DRAWINGS FOR MINOR SLOPES, C.I.P. CONCRETE CURBS, DRAINS, OPENINGS FOR PIPES AND DUCTS, ETC.
- TOP OF STEEL ELEVATION (T.O. STL.) 29'-0" / 2", UNLESS NOTED THUS: (1/2").
- ELEVATIONS SHOWN INDICATE THE FOLLOWING:
AT BEAMS: JOIST OF BEAM EL. (UNO.)
AT ANGLES: TOP OF ANGLE EL. (UNO.)
- [S] INDICATES NUMBER OF 3/4" INCH DIAMETER HEADED SHEAR STUDS REQUIRED ON TOP OF FLANGE OF BEAM. SEE 3/502-T FOR DETAIL.
- ◆ AND ● INDICATES MOMENT CONNECTION. SEE SECTION ON SHEET 502-T.
- SEE SHEET 5 002-T FOR COLUMN SCHEDULE.
- SEE SHEET 5 001-T FOR STRUCTURAL NOTES, LEGEND.



TERMINAL BUILDING
MEZZANINE FRAMING PLAN
SCALE: 1/8" = 1'-0"

1 SECTION
SCALE: 3/4" = 1'-0"

2 SECTION
SCALE: 3/4" = 1'-0"