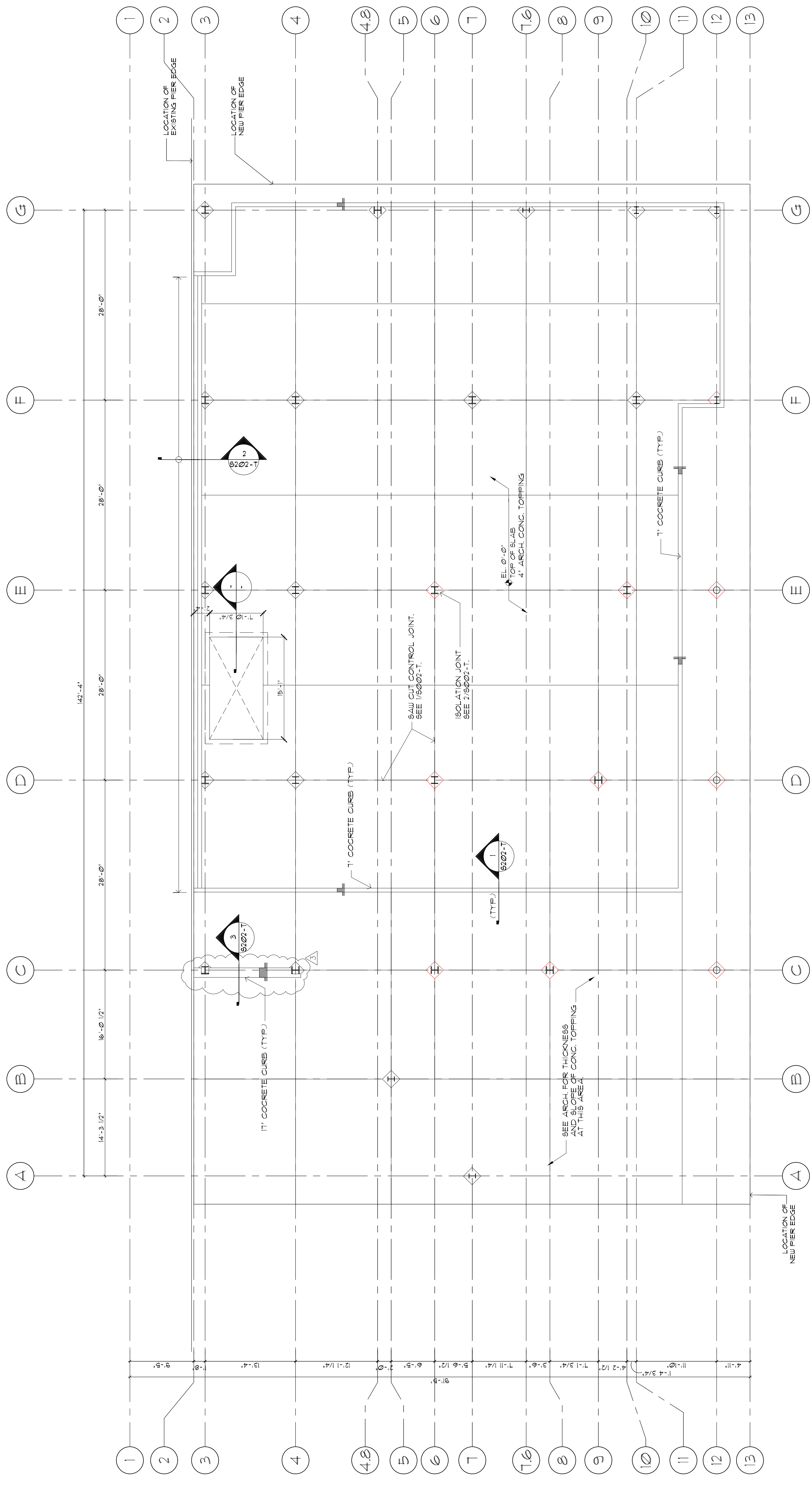




PROJ. MANAGER	PAUL POTTLE	DATE	
BY		DATE	
SIGNATURE	<i>W.S. Smith</i>	DATE	10/15/05
P. LICENSE NUMBER	10709	DATE	10/15/05
REVISIONS	REVISIONS 1 VAP 22 DESIGN CHANGE 10/15/05 REVISIONS 2 REVISIONS 3 REVISIONS 4 DESIGN-DETAILED3 DESIGN-DETAILED2 CHECKED-REVIEWED DESIGN-DETAILED FIELD CHANGES		

CITY OF PORTLAND
OCEAN GATEWAY PHASE 1
TERMINAL BUILDING
GROUND FLOOR FRAMING PLAN

BEA
BEA
GORRILL-PALMER CONSULTING ENGINEERS
PERATROVICH, NOTTINGHAM, & DRAGE
WINTON SCOTT ARCHITECTS
HALEY & ALDRICH
IN ASSOCIATION WITH:



- NOTES:**
- FOR GENERAL NOTES REFER TO SHEET S001-T.
 - FOR EXACT LOCATION AND SIZE OF ALL OPENINGS REFER TO ARCHITECTURAL DRAWINGS.
 - ALL THE ISOLATION AND CONTROL JOINTS ARE FOR CONCRETE ARCHITECTURAL TOPPING ABOVE -0'-10" ONLY.
 - CONCRETE TOPPING THICKER THAN 4", REINFORCED WITH ONE LAYER OF 6x6" w/ 1.4 x 1.4 WELDED WIRE FABRIC 2" BELOW TOP OF SLAB.

TERMINAL BUILDING
GROUND FLOOR FRAMING AND REINFORCING PLAN
SCALE: 1/8" = 1'-0"