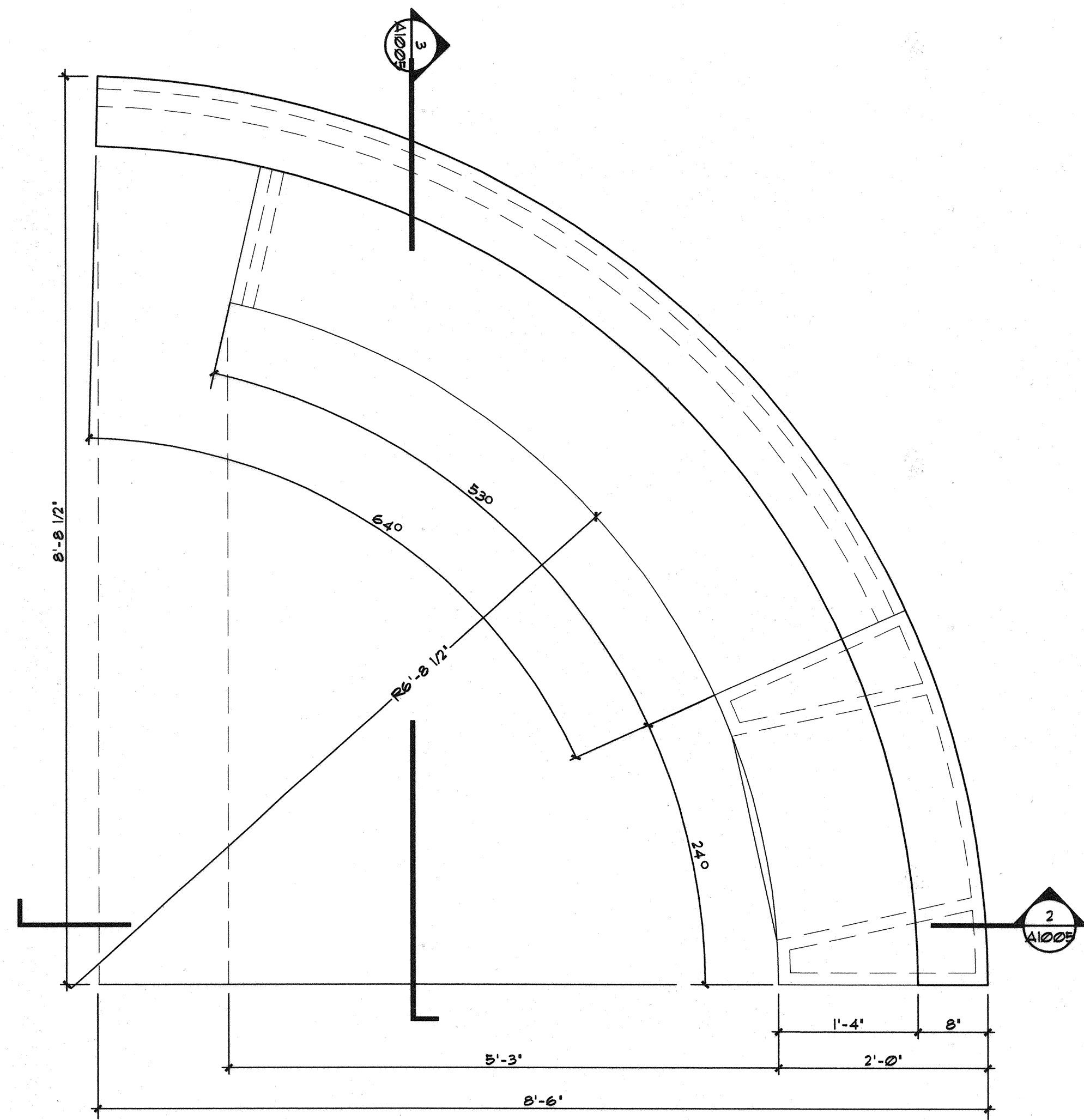
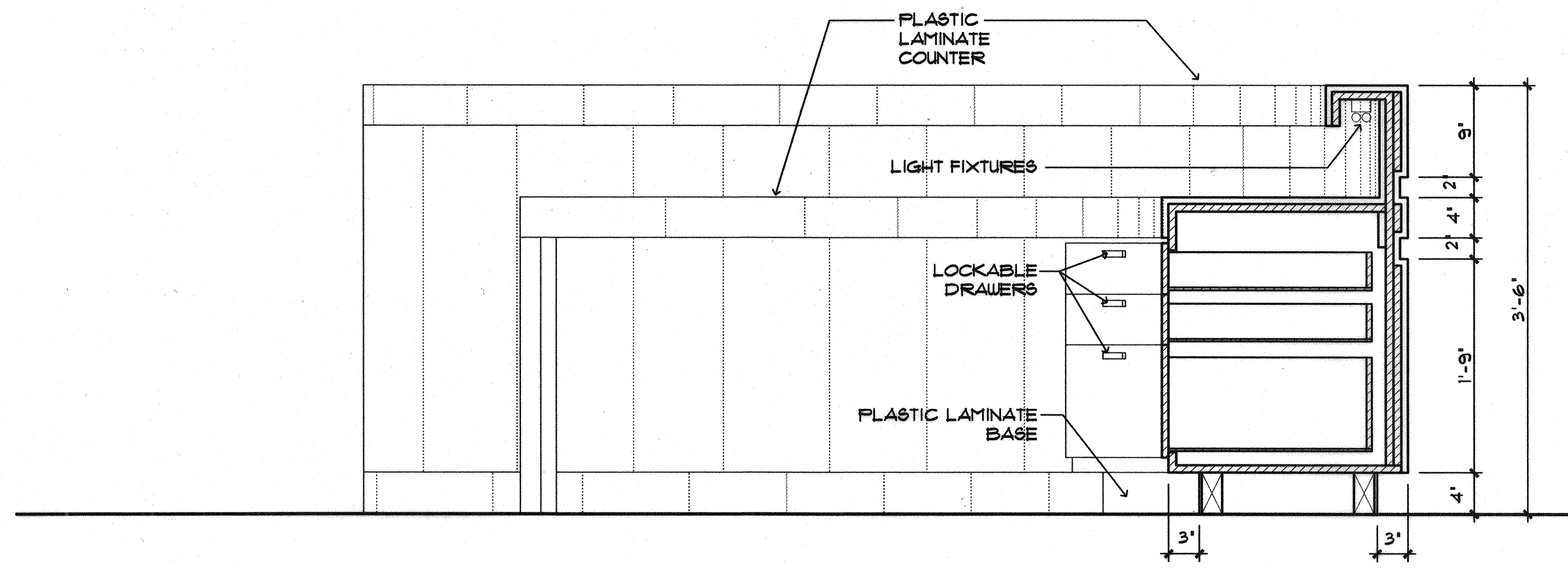


Filename: \\server1\projects\02-0818 Maine Int Ferry Terminal\Phase 1\Architecture\FINAL CONSTRUCTION DOCUMENTS\TERMINAL BUILDING\20343802-T-A1005.dwg, Oct 07, 2004 - 6:21pm



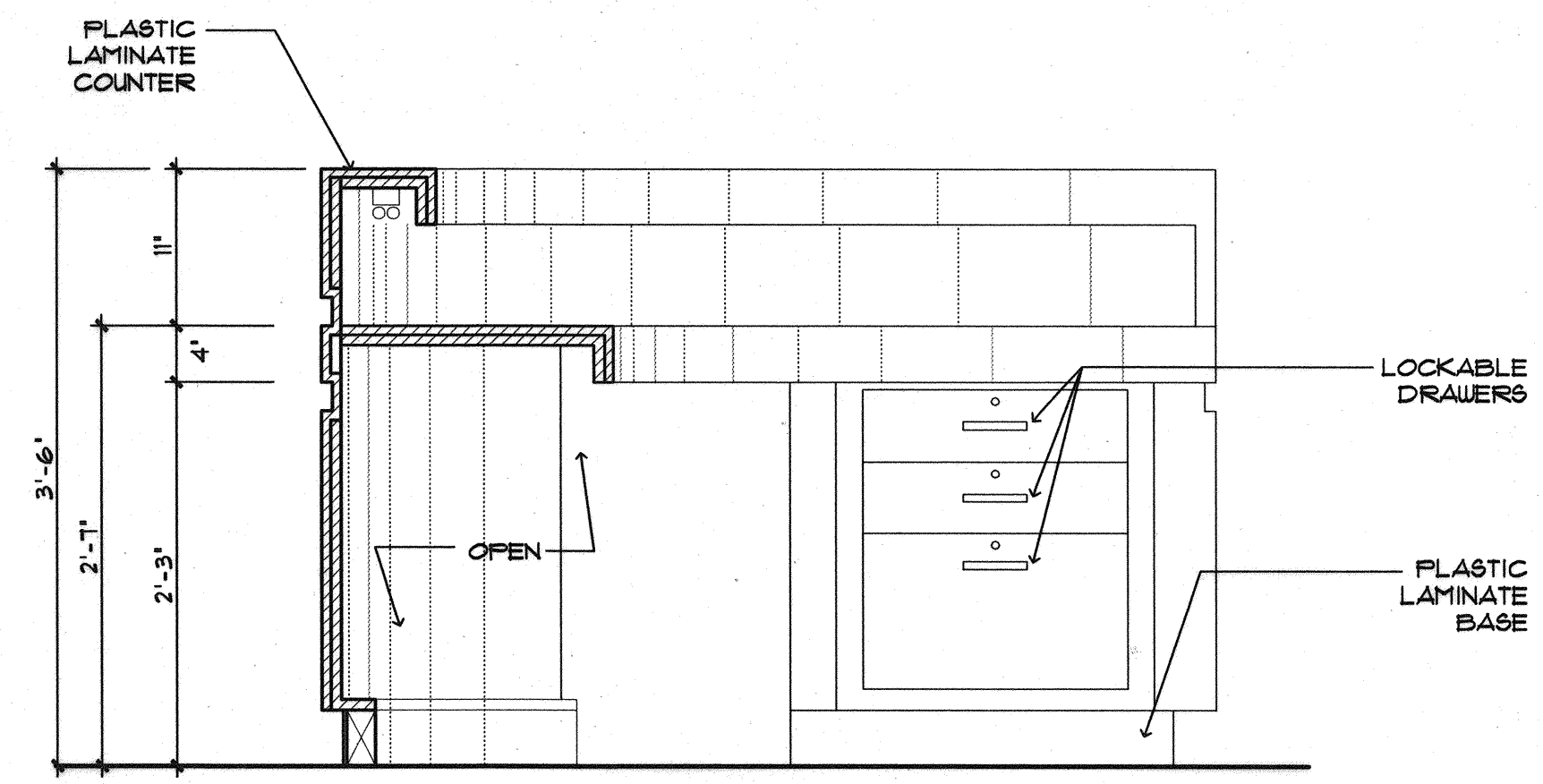
**RECEPTION DESK PLAN**  
SCALE: 1" = 1'-0"

1  
A1005T



**RECEPTION DESK SECTION**  
SCALE: 1" = 1'-0"

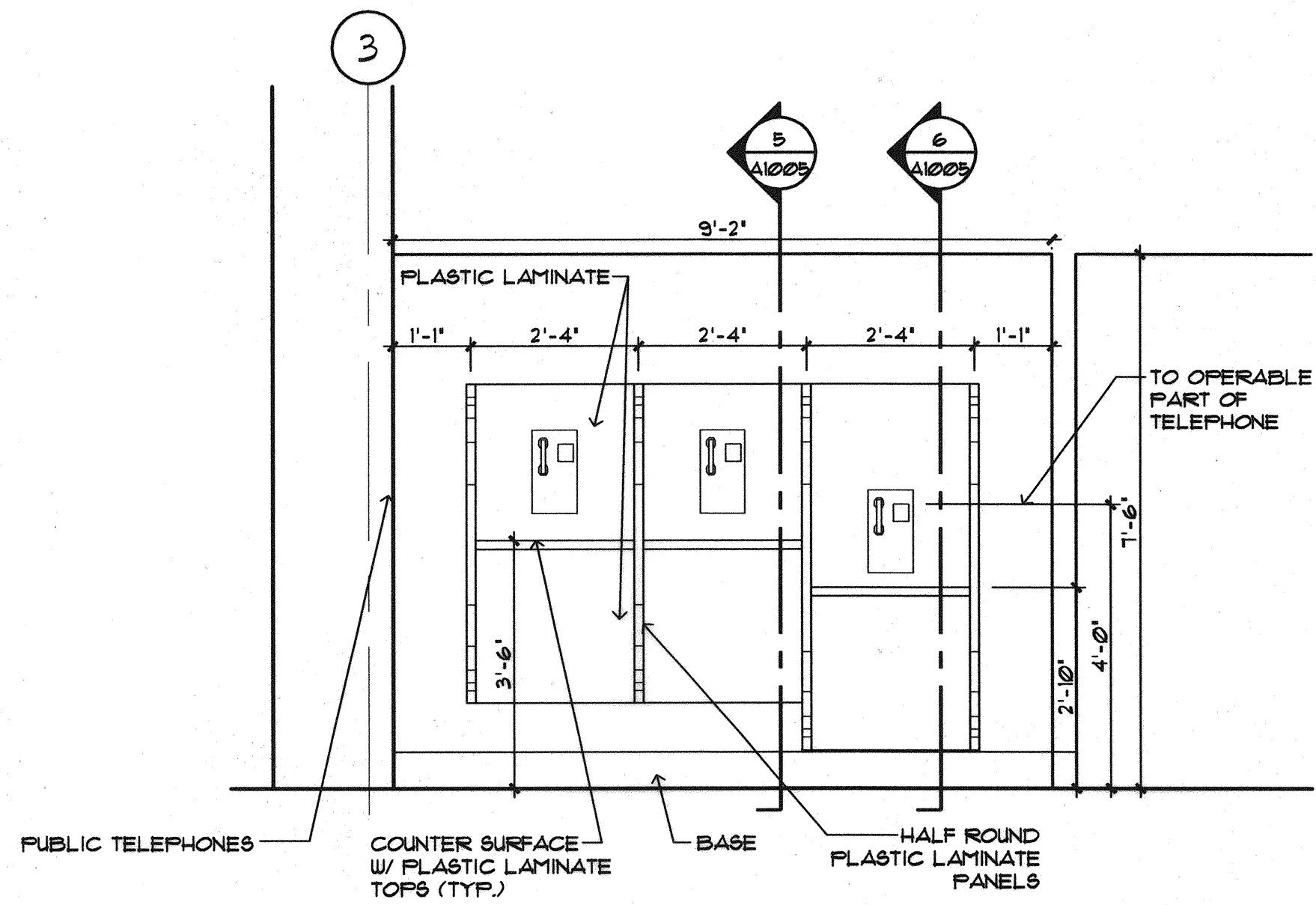
2  
A1005T



**RECEPTION DESK SECTION**  
SCALE: 1" = 1'-0"

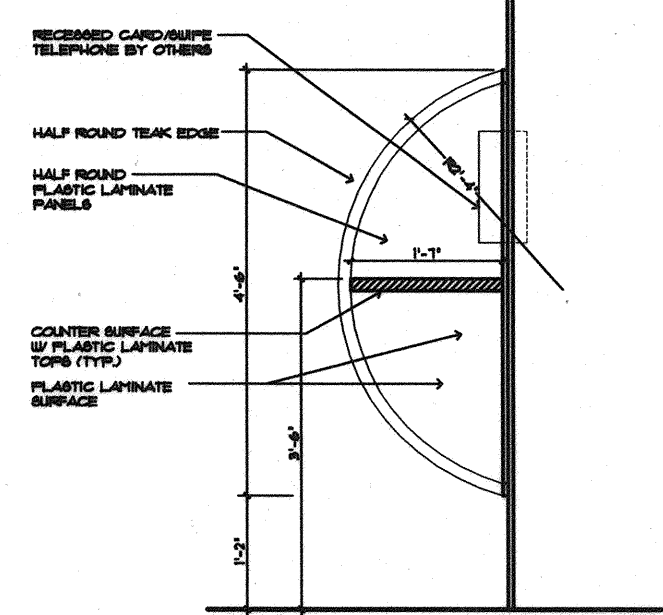
NOTE: ALL CABINET DOORS & DRAWERS TO INCLUDE LOCKING HARDWARE

3  
A1005T



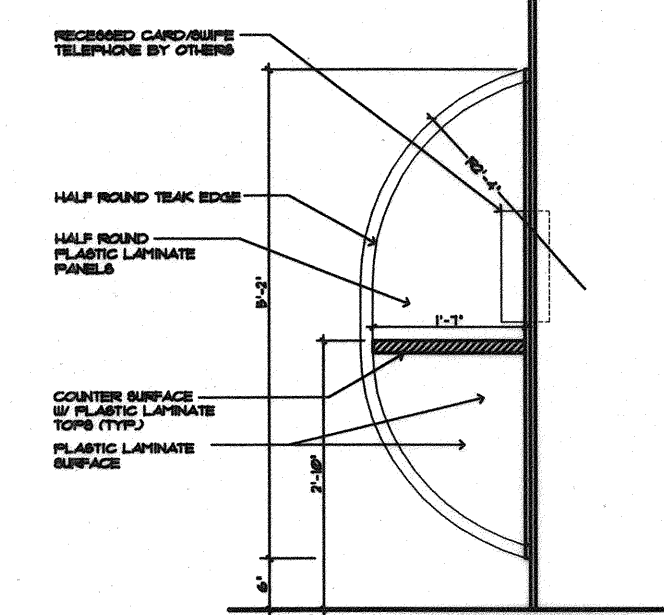
**PUBLIC TELEPHONES ELEVATION**  
SCALE: 1/2" = 1'-0"

4  
A1005T



**SECTION THROUGH TEL. COUNTER (TYP)**  
SCALE: 1/2" = 1'-0"

5  
A1005T



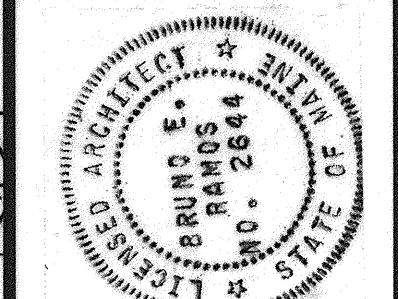
**SECTION THROUGH ADA TEL. COUNTER (TYP)**  
SCALE: 1/2" = 1'-0"

6  
A1005T

IN ASSOCIATION WITH:  
BEA CONSULTING ENGINEERS  
PERATROVICH, NOTTINGHAM & DRAGE  
WINTON SCOTT ARCHITECTS  
HALEY & ALDRICH

**BEA**

STATE OF MAINE  
DEPARTMENT OF TRANSPORTATION  
PROJECT NUMBER 009215.00  
PIN  
009215.00



PROJ. MANAGER	PAUL POTTE	DATE	
DESIGN-DETAILED		BY	
CHECKED-REVIEWED		DATE	
DESIGN-2-DETAILED		SIGNATURE	
DESIGN-3-DETAILED		P. LICENCE NUMBER	
REVISIONS 1		ARC 5644	
REVISIONS 2		DATE	
REVISIONS 3		10/8/2004	
REVISIONS 4		FIELD CHANGES	

CITY OF PORTLAND  
OCEAN GATEWAY PHASE 1  
MILLWORK DETAILS

A1005-T