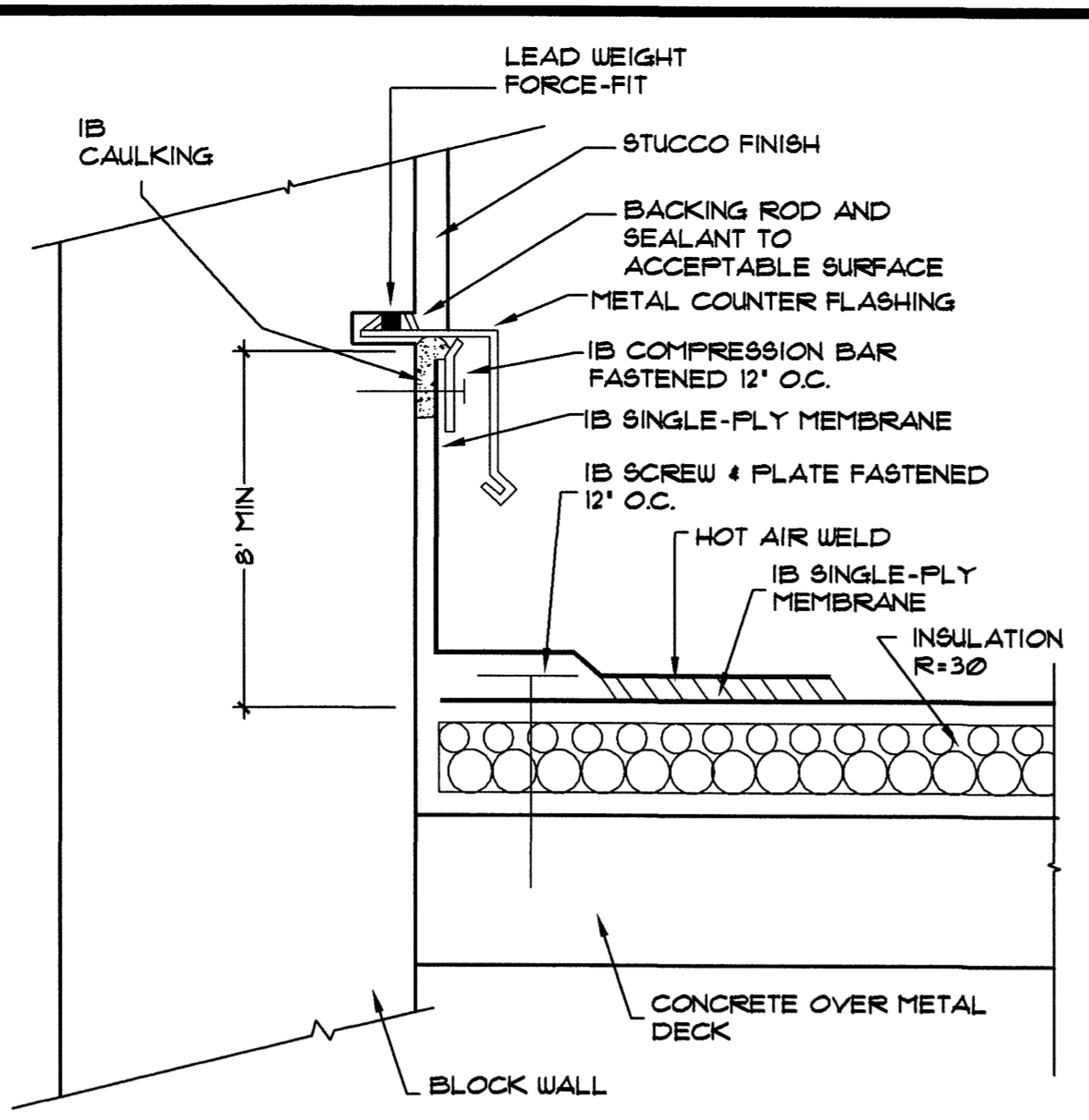


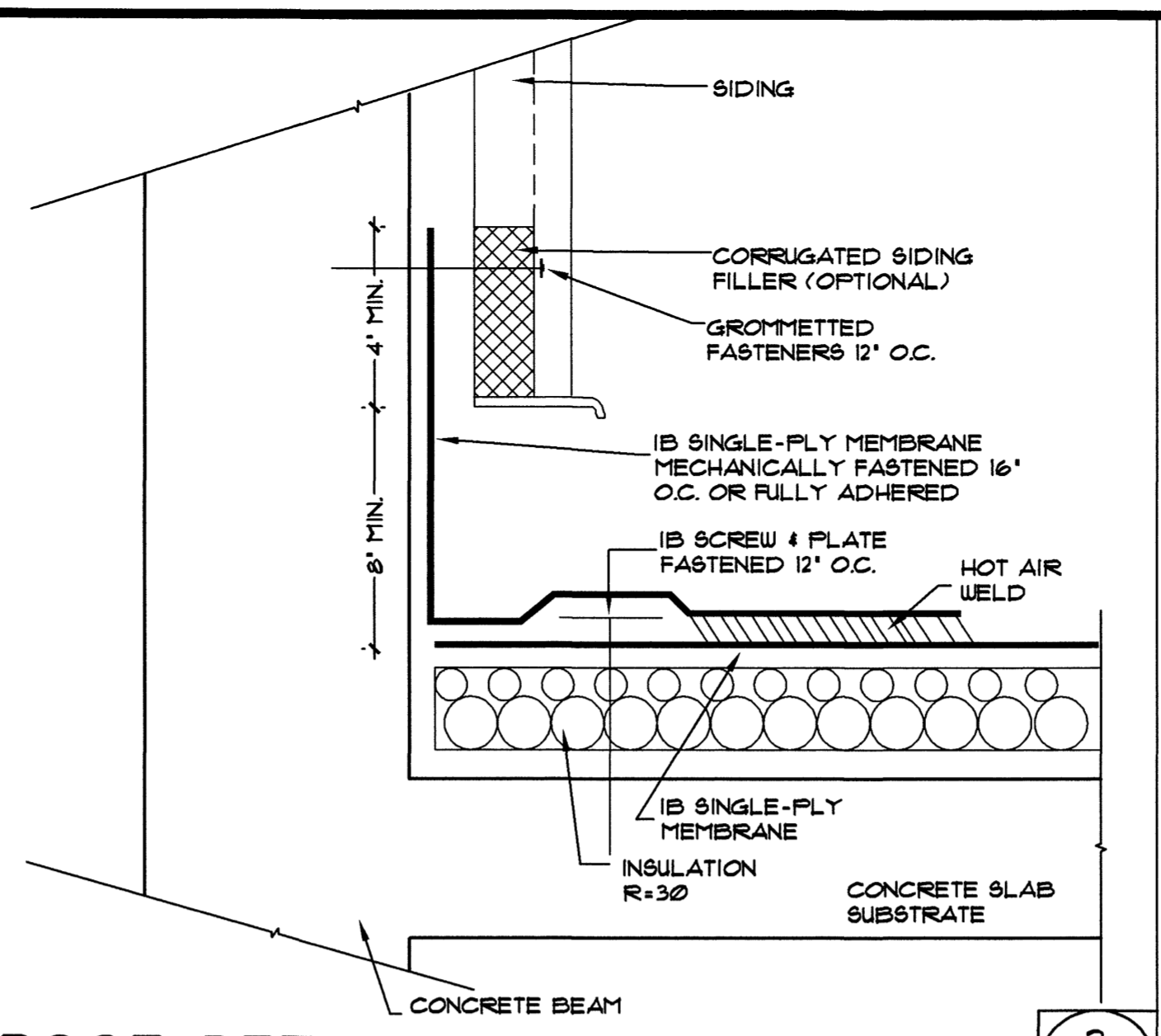
**FIRE EXTINGUISHER F-2 (SEMIRECESSED) AND CABINET DETAIL**  
 SCALE: 3" = 1'-0"

1  
A1002T



**ROOF DETAIL**  
 SCALE: 3" = 1'-0"

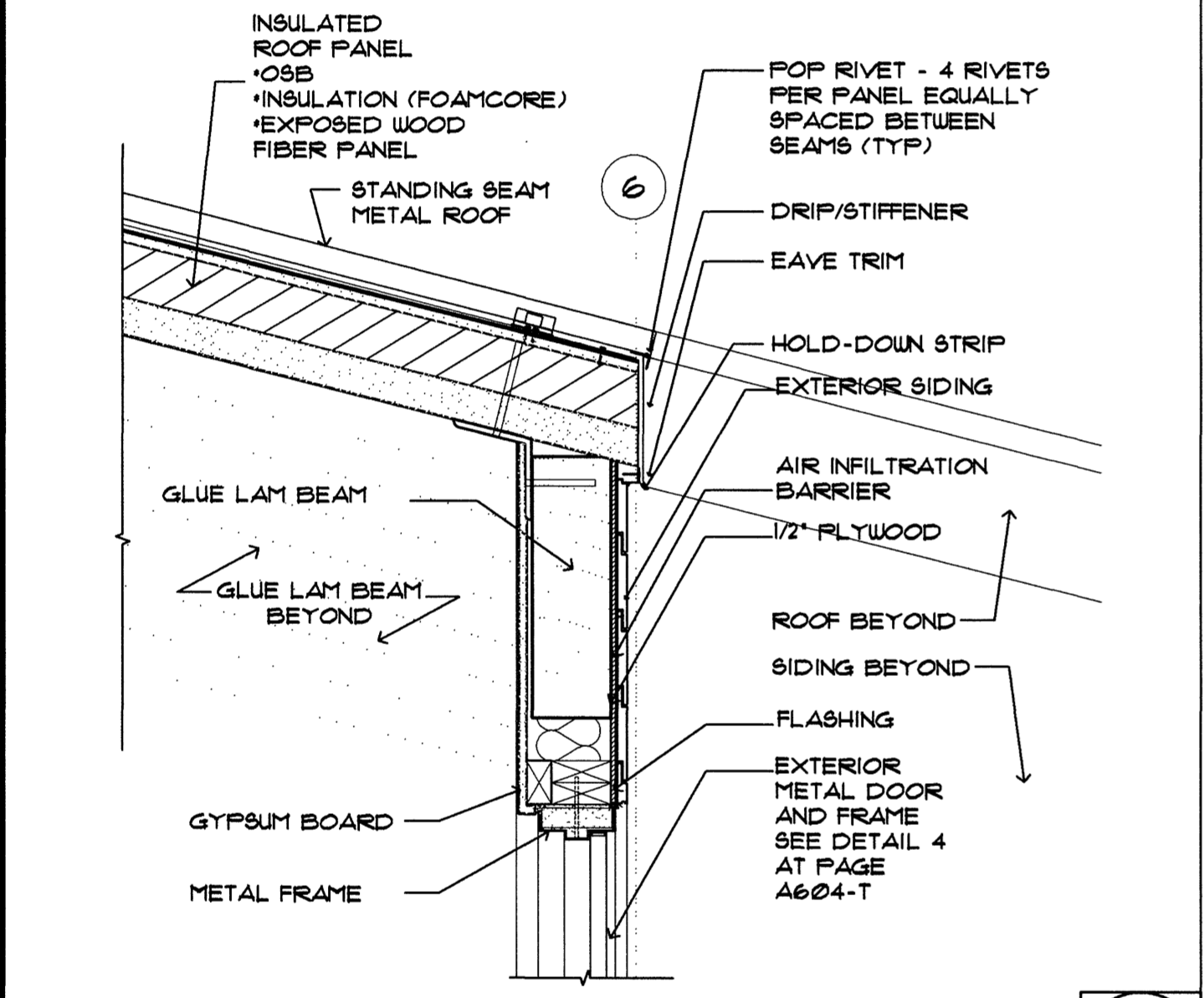
2  
A1002T



**ROOF DETAIL**  
 SCALE: 3" = 1'-0"

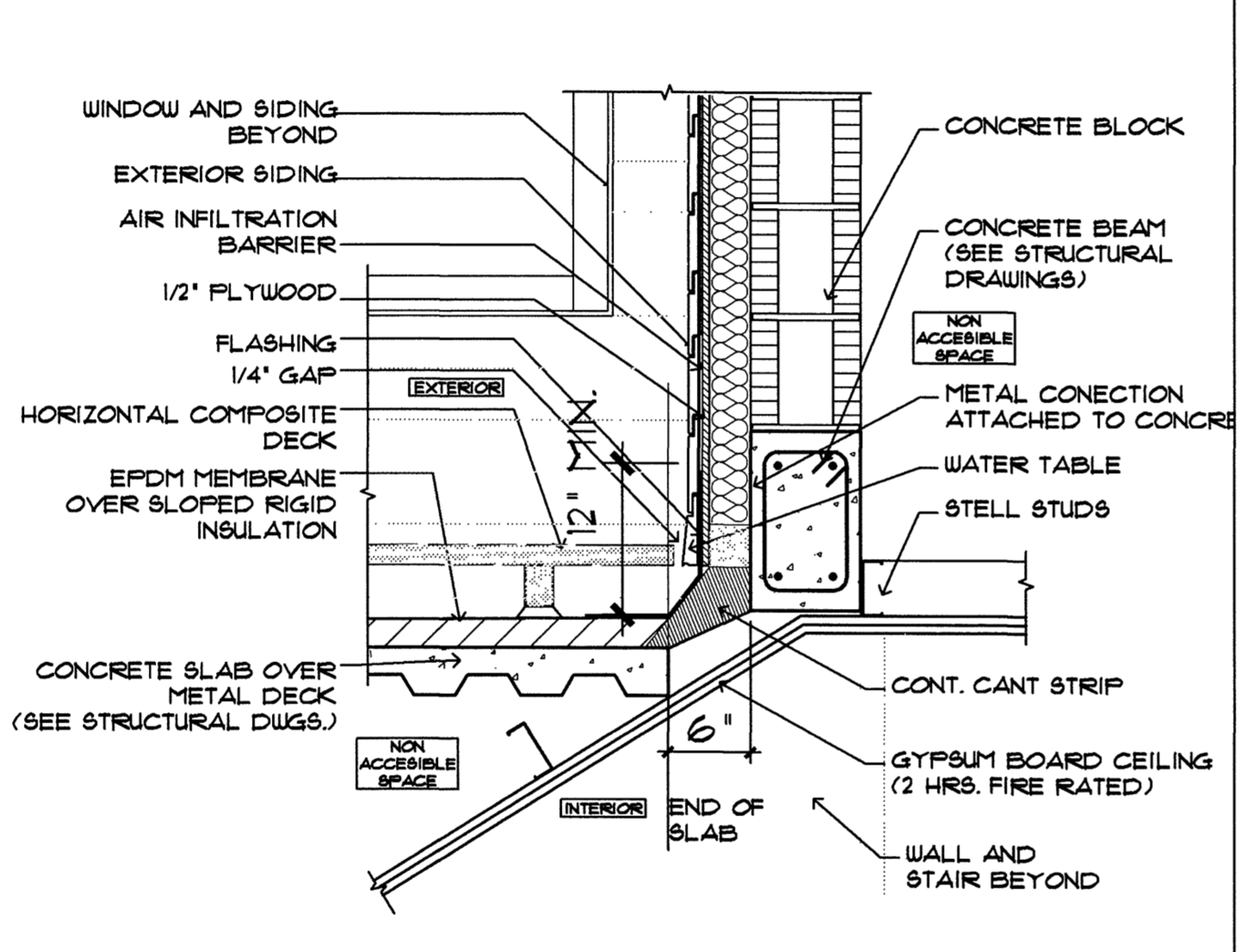
3  
A1002T

NOT IN USE



**ROOF AND WALL DETAIL**  
 SCALE: 1" = 1'-0"

4  
A1002T

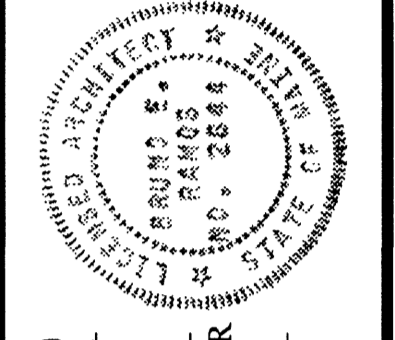


**ROOF DETAIL EXTERIOR WALL INTERSECTION**  
 SCALE: 1" = 1'-0"

5  
A1002T

IN ASSOCIATION WITH:  
**BE&EA**  
 GORRILL-PALMER CONSULTING ENGINEERS  
 PERATROVICH, NOTTINGHAM, & DRAGE  
 WINTON SCOTT ARCHITECTS  
 HALEY & ALDRICH

STATE OF MAINE  
 DEPARTMENT OF TRANSPORTATION  
 PROJECT NUMBER 009215.00  
 PIN 009215.00



PROJ. MANAGER	PAUL POTTLE	DATE	
DESIGN-DETAILED		BY	
CHECKED-REVIEWED		DATE	
DESIGN-DETAILED		DETAILS ADDED	4/21/05
REVISIONS 1		P. LICENSE NUMBER	ARC 2684
REVISIONS 2		DATE	10/8/2004
REVISIONS 3			
REVISIONS 4			
FIELD CHANGES			

CITY OF PORTLAND  
 OCEAN GATEWAY PHASE 1  
 DETAILS

A1002-T