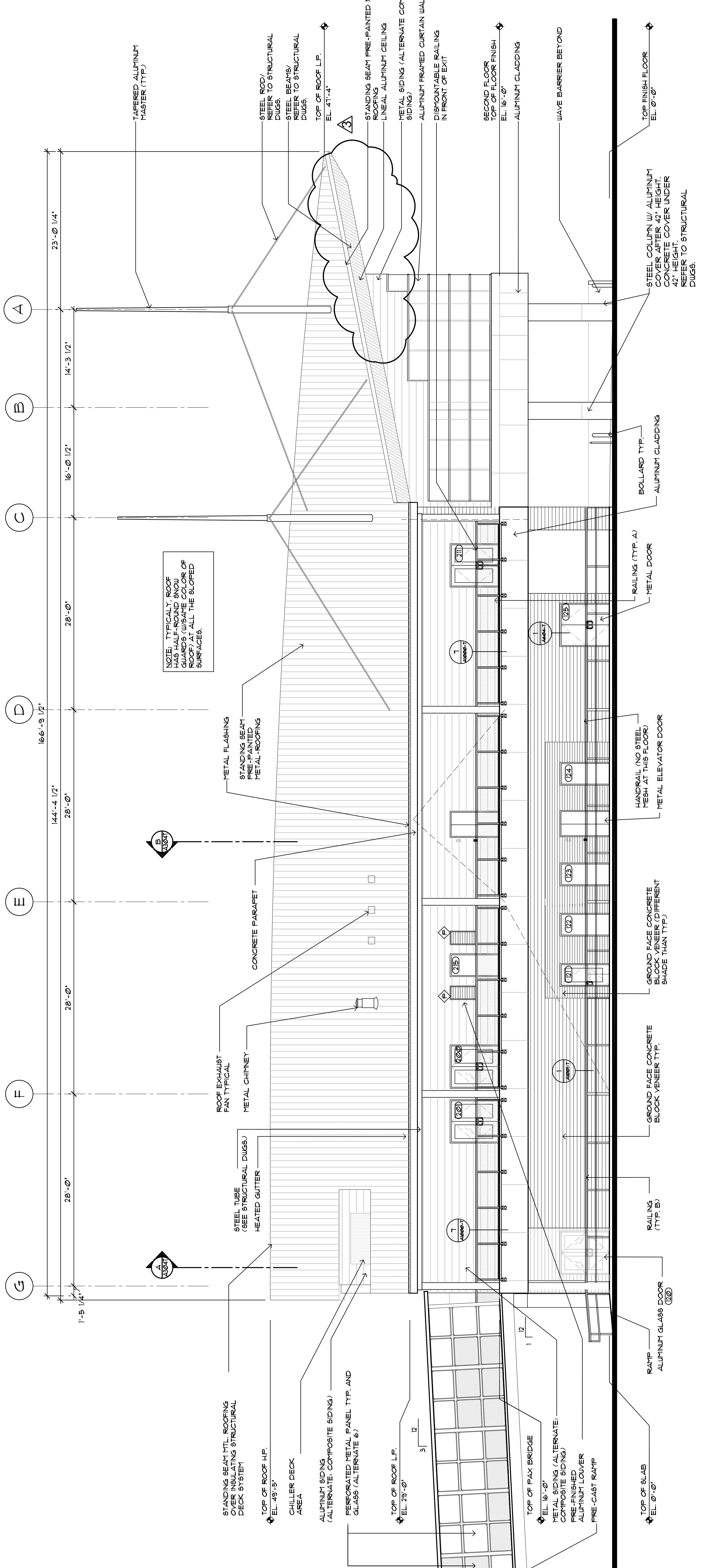


IN ASSOCIATION WITH:
GORRILL-PALMER CONSULTING ENGINEERS
PERATROVICH, NOTTINGHAM, & DRAKE
HALEY & ALDRICH

PROJ. MANAGER PAUL POTLLE
BY DATE
10/15/05
11/15/05
12/02/05
DATE
12/02/05
P. LICENCE NUMBER
SIGNATURE
FIELD CHANGES
REVISIONS 4
REVISIONS 3
REVISIONS 2
REVISIONS 1
DESIGN3-DETAILED3
DESIGN2-DETAILED2
CHECKED-REVIEWED
DESIGN-DETAILED

CITY OF PORTLAND
OCEAN GATEWAY PHASE 1
EXTERIOR ELEVATIONS



WEST ELEVATION
SCALE: 1/4" = 1'-0"