

PROJ. MANAGER PAUL POTTE
BY DATE
CHECKED-REVIEWED
DESIGN-DETAILED
DESIGN-DETAILED3
REVISIONS 1 VAP 22 DESIGN CHANGE 10/15/05
REVISIONS 2
REVISIONS 3
REVISIONS 4
FIELD CHANGES

CITY OF PORTLAND
OCEAN GATEWAY PHASE 1
EXTERIOR ELEVATIONS

A301-T
138 OF 288

BEA
GERRILL PALMER CONSULTING ENGINEERS
PERATROVICH, NOTTINGHAM, & DRAKE
WINTON SCOTT ARCHITECTS
HALEY & ALDRICH

STATE OF MAINE
LICENSED ARCHITECT
R. G. HARRIS
NO. 2644
12/02/05

DATE 12/02/05
PLICENSE NUMBER
SIGNATURE

DATE 11/15/05
VAP 22 DESIGN CHANGE 10/15/05
CHECKED-REVIEWED
DESIGN-DETAILED
DESIGN-DETAILED3
REVISIONS 1
REVISIONS 2
REVISIONS 3
REVISIONS 4
FIELD CHANGES

PROJ. MANAGER PAUL POTTE
BY DATE
CHECKED-REVIEWED
DESIGN-DETAILED
DESIGN-DETAILED3
REVISIONS 1 VAP 22 DESIGN CHANGE 10/15/05
REVISIONS 2
REVISIONS 3
REVISIONS 4
FIELD CHANGES

CITY OF PORTLAND
OCEAN GATEWAY PHASE 1
EXTERIOR ELEVATIONS

A301-T
138 OF 288

BEA
GERRILL PALMER CONSULTING ENGINEERS
PERATROVICH, NOTTINGHAM, & DRAKE
WINTON SCOTT ARCHITECTS
HALEY & ALDRICH

STATE OF MAINE
LICENSED ARCHITECT
R. G. HARRIS
NO. 2644
12/02/05

DATE 12/02/05
PLICENSE NUMBER
SIGNATURE

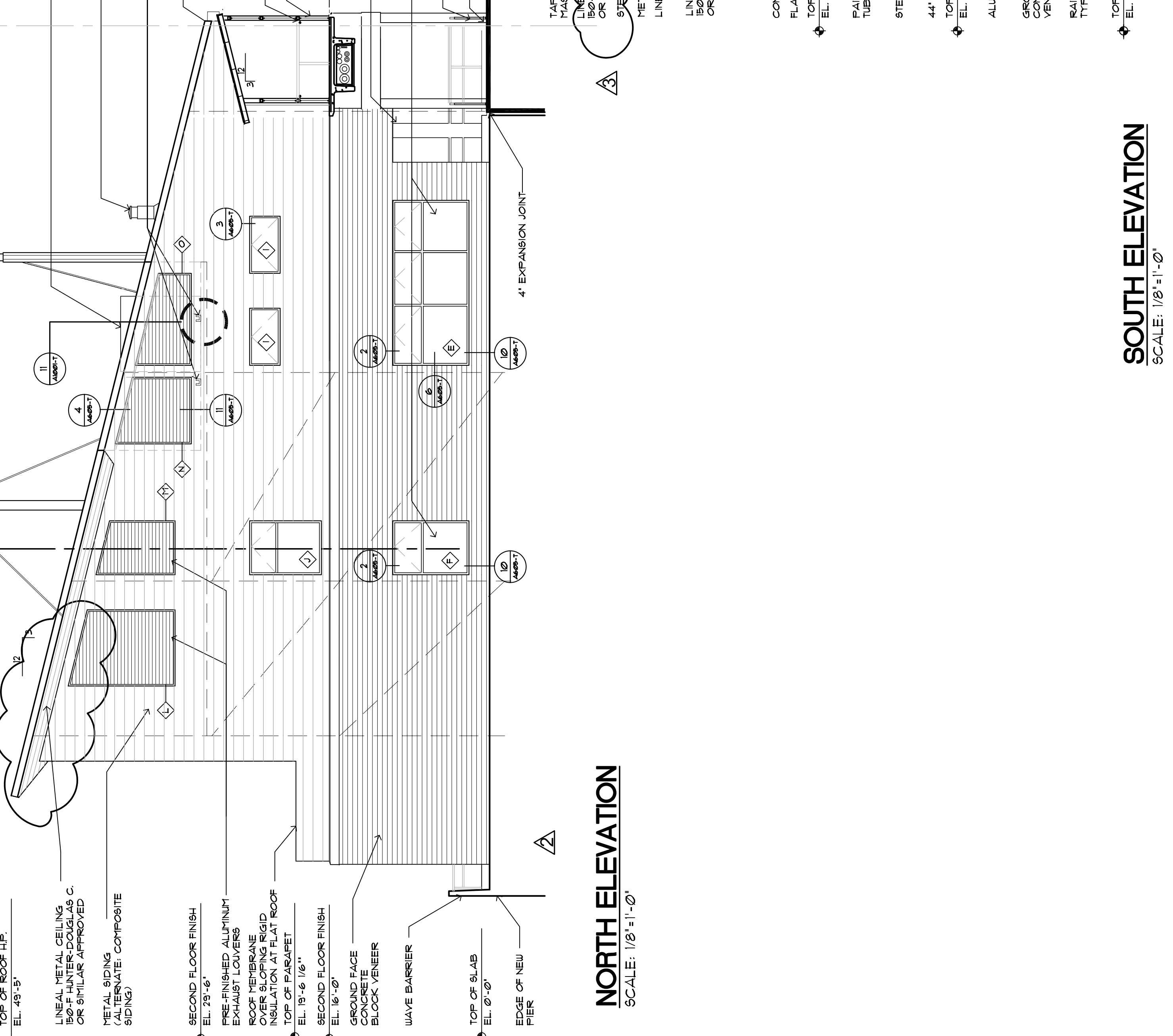
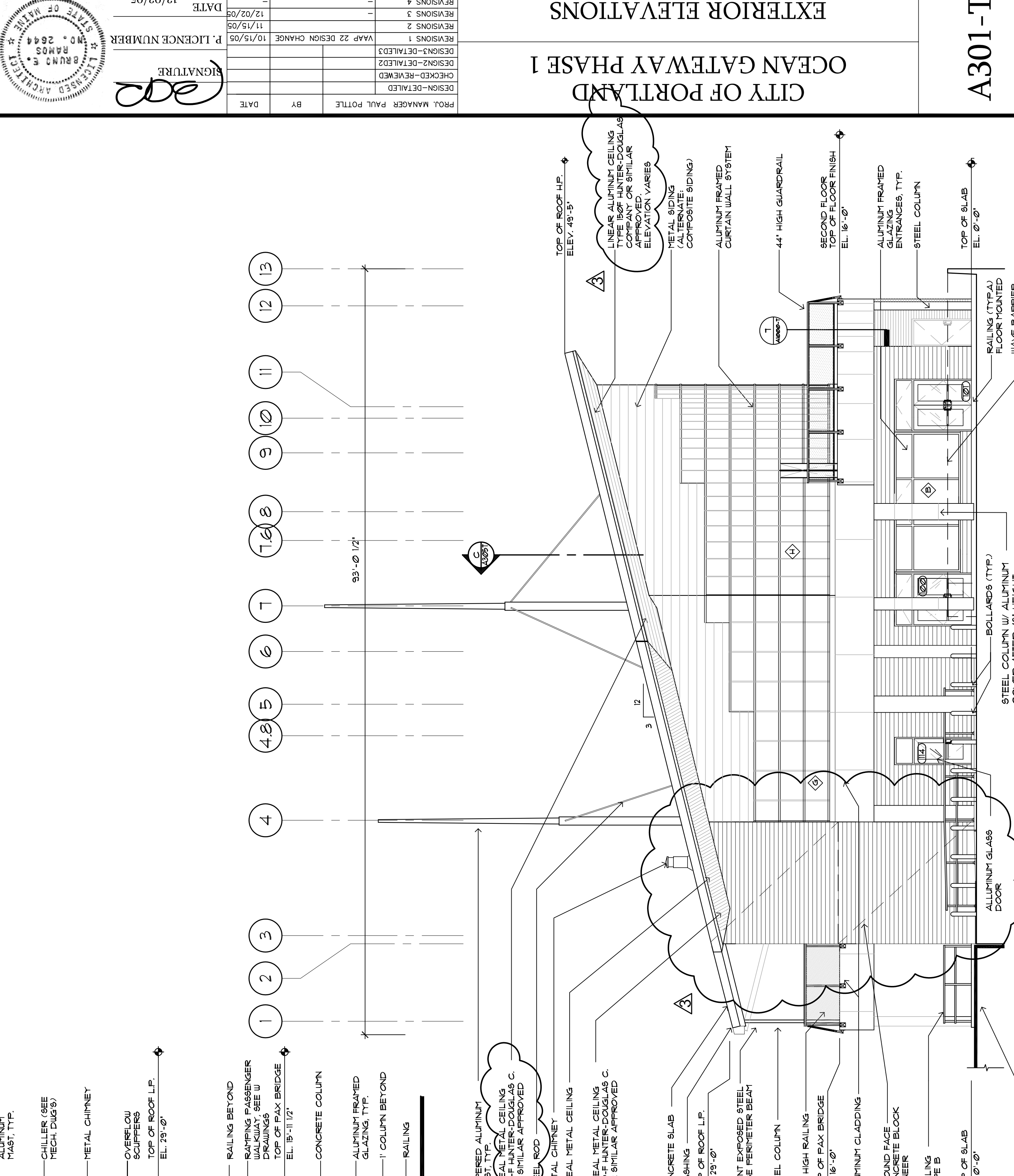
DATE 11/15/05
VAP 22 DESIGN CHANGE 10/15/05
CHECKED-REVIEWED
DESIGN-DETAILED
DESIGN-DETAILED3
REVISIONS 1
REVISIONS 2
REVISIONS 3
REVISIONS 4
FIELD CHANGES

PROJ. MANAGER PAUL POTTE
BY DATE
CHECKED-REVIEWED
DESIGN-DETAILED
DESIGN-DETAILED3
REVISIONS 1 VAP 22 DESIGN CHANGE 10/15/05
REVISIONS 2
REVISIONS 3
REVISIONS 4
FIELD CHANGES

CITY OF PORTLAND
OCEAN GATEWAY PHASE 1
EXTERIOR ELEVATIONS

A301-T
138 OF 288

BEA
GERRILL PALMER CONSULTING ENGINEERS
PERATROVICH, NOTTINGHAM, & DRAKE
WINTON SCOTT ARCHITECTS
HALEY & ALDRICH



NORTH ELEVATION
SCALE: 1/8"=1'-0"

SOUTH ELEVATION
SCALE: 1/8"=1'-0"