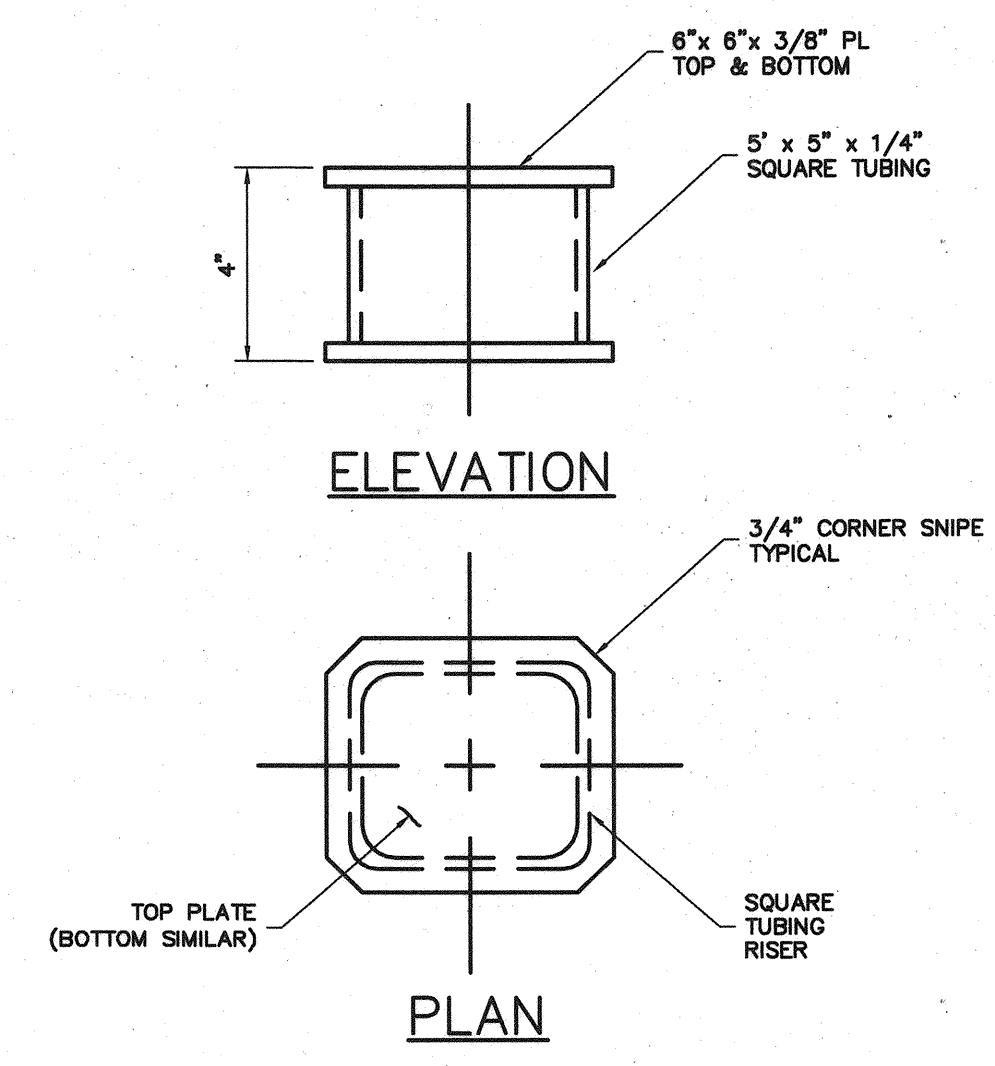


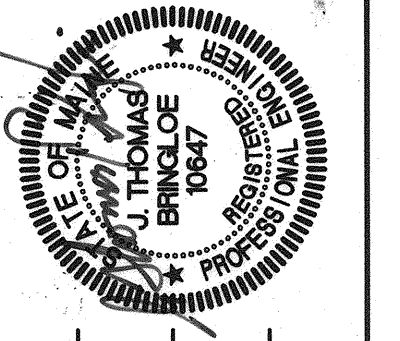
DETAIL 5-B
 TYPICAL GANGWAY PLATFORM RISER PAD (6 REQ'D)
 NOT TO SCALE



DETAIL 5-A
 TYPICAL RAMP RISER PAD (18 REQ'D)
 NOT TO SCALE

THE GLOSTEN ASSOCIATES
 Consulting Engineers Serving the Marine Community
 120 Western Avenue, Suite 200
 Portland, ME 04101-2521
 TEL | 206.624.7850
 FAX | 206.682.7117
 WEB | www.glosten.com

STATE OF MAINE
DEPARTMENT OF TRANSPORTATION
 PROJECT NUMBER 009215.00
 PIN
 009215.00



SIGNATURE
 P.E. NUMBER
 DATE

PROJ. MANAGER	PAUL POTTLE	BY	DATE
DESIGN-DETAILED	RBL		02/25/04
CHECKED-REVIEWED	JTB		03/16/04
DESIGN2-DETAILED2	RBL		09/12/04
DESIGN3-DETAILED3			
REVISIONS 1			
REVISIONS 2			
REVISIONS 3			
REVISIONS 4			
FIELD CHANGES			

CITY OF PORTLAND
OCEAN GATEWAY PHASE 1
PIER 2 BERTH 2
DETAILS

W319-M
 ALT.
 124 OF 288