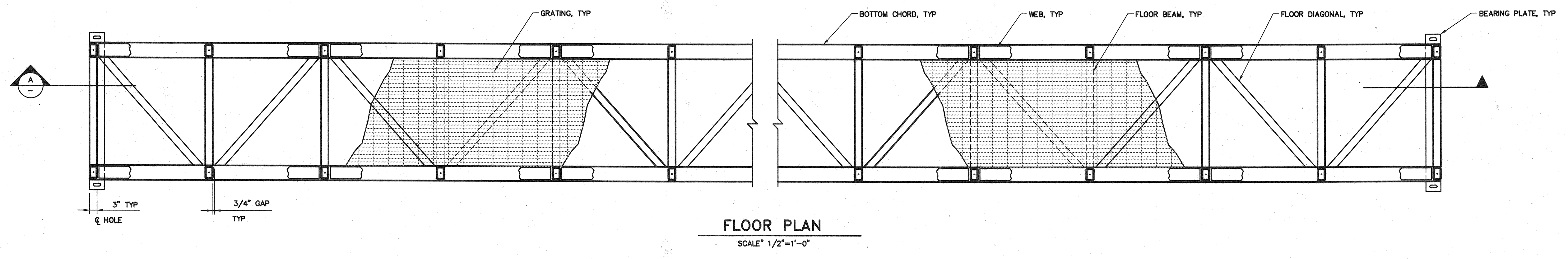
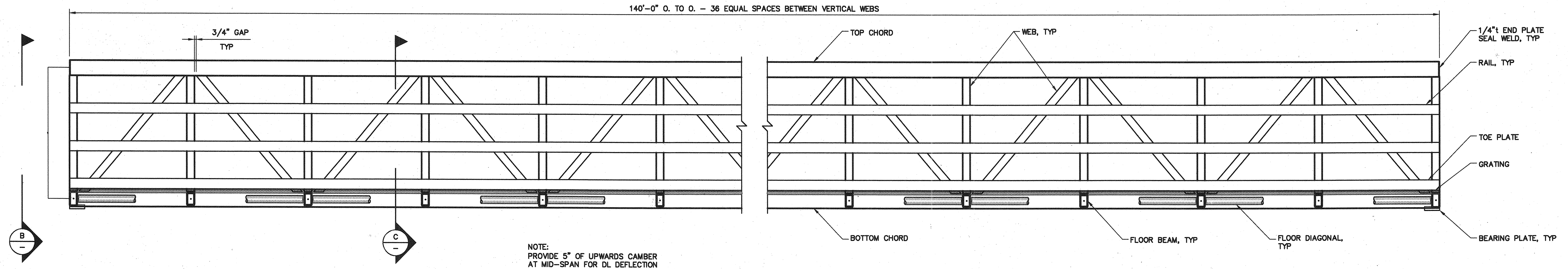


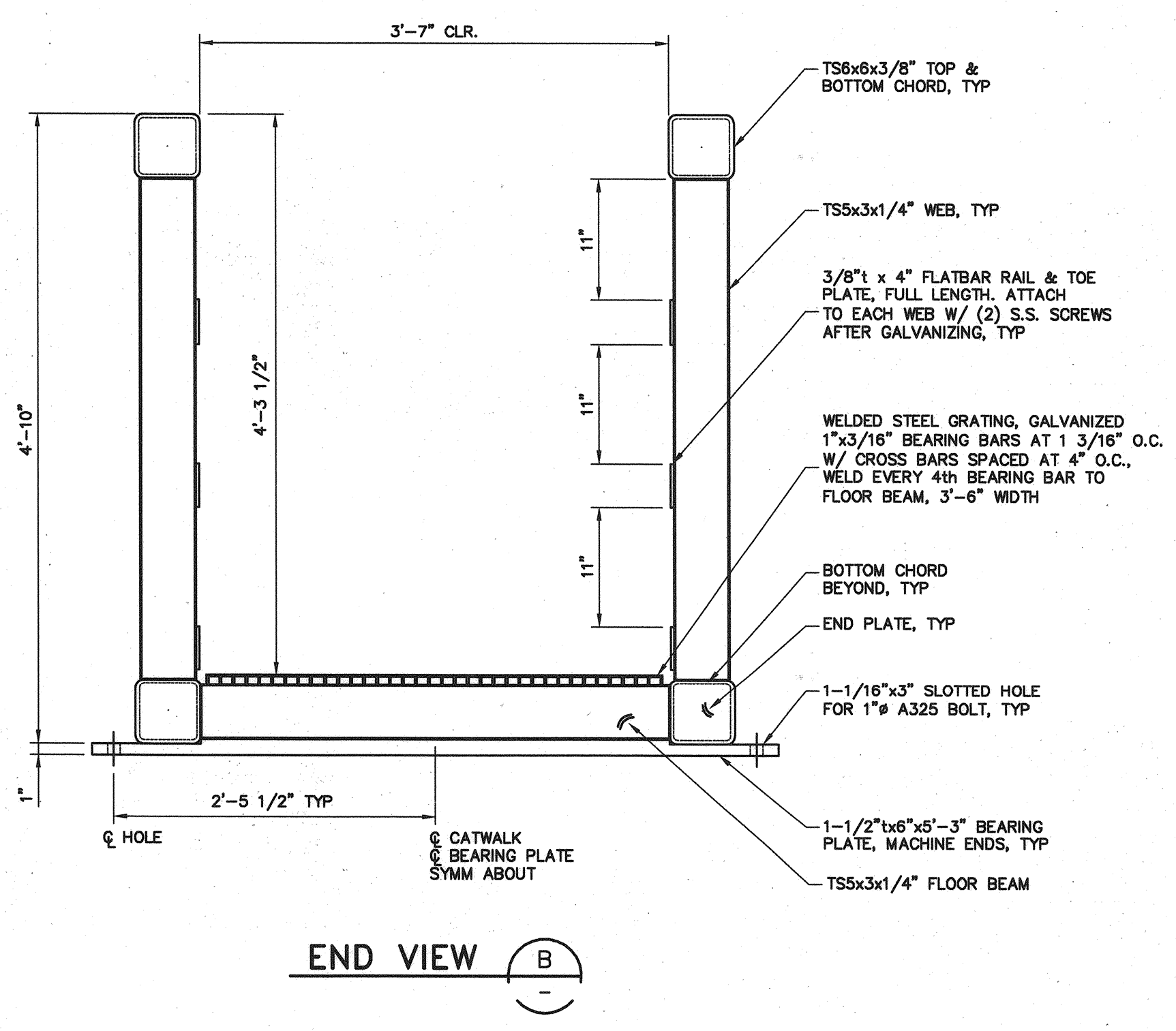
8/30/04
 Filename: 20343802-M-W306-ALT-100



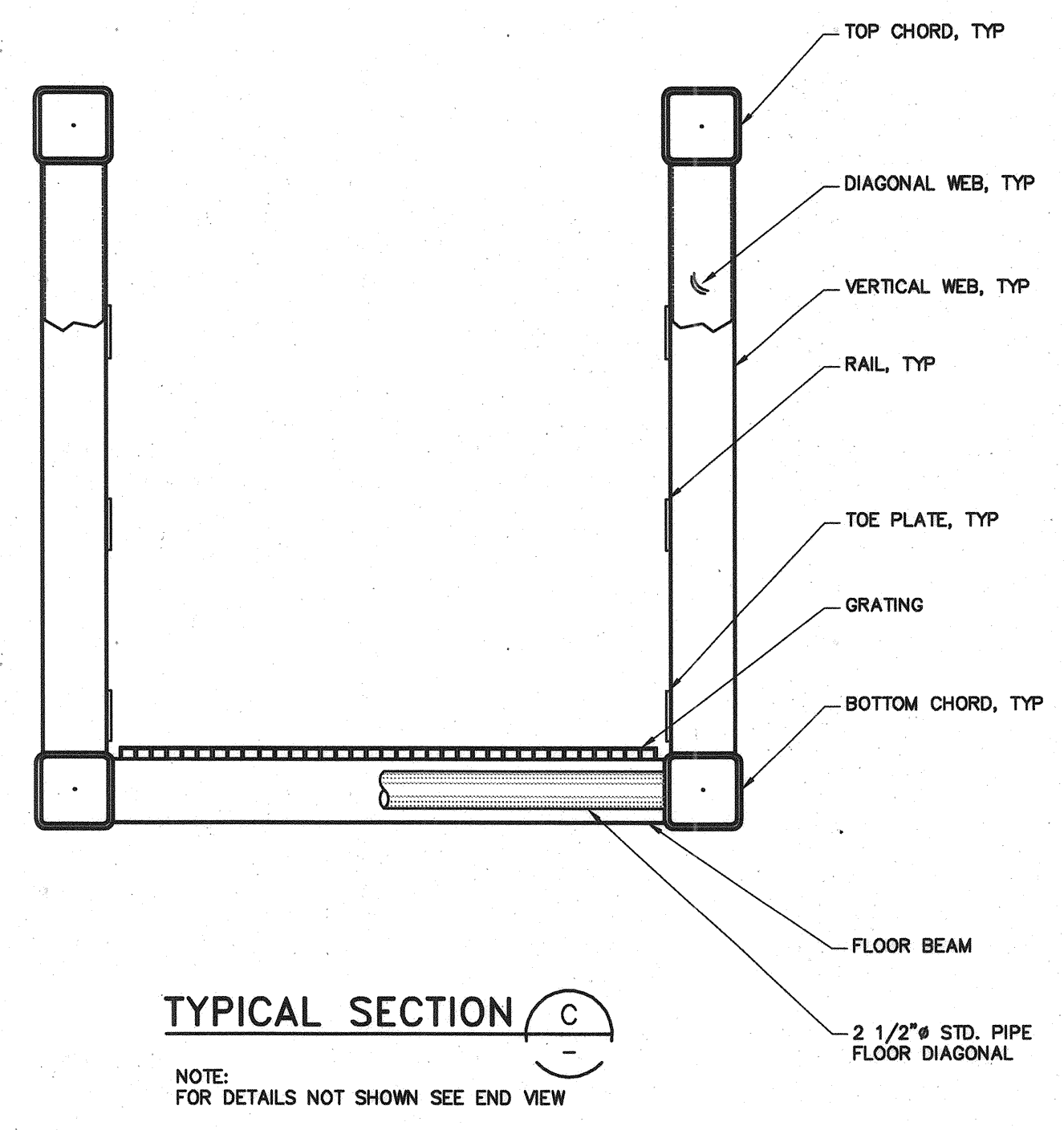
FLOOR PLAN
 SCALE: 1/2"=1'-0"



SECTION A
 SCALE: 1/2"=1'-0"



END VIEW B

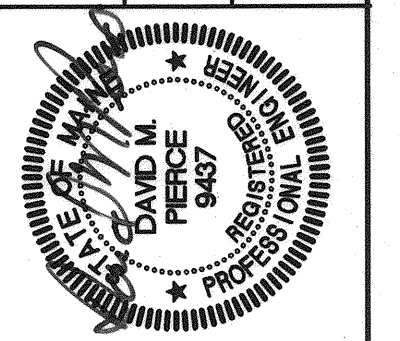


TYPICAL SECTION C
 NOTE: FOR DETAILS NOT SHOWN SEE END VIEW
 SCALE: 1/2"=1'-0"

NOTE:
 WELD ALL JOINTS WITH 1/4" FILLET WELD OR EQUIVALENT BEVEL WELD ALL AROUND UNLESS OTHERWISE NOTED.
 ALL STEEL SHALL BE GALVANIZED UNLESS OTHERWISE NOTED.

811 First Avenue, Suite 570
 Seattle, Washington 98104
 Phone: (206) 424-1867
 Fax: (206) 424-1868
 E-Mail: info@pradesa.com

STATE OF MAINE
DEPARTMENT OF TRANSPORTATION
PROJECT NUMBER 009215.00
PIN 009215.00



SIGNATURE: DAVID M. PIERCE
 P.E. NUMBER: 9437
 DATE: 10/16/04

PROJ. MANAGER	PAUL POTTLE	DATE
DESIGN-DETAILED	TMB	09/01/04
CHECKED-REVIEWED	RJ	09/01/04
DESIGN2-DETAILED2		
DESIGN3-DETAILED3		
REVISIONS 1		
REVISIONS 2		
REVISIONS 3		
REVISIONS 4		
FIELD CHANGES		

CITY OF PORTLAND
OCEAN GATEWAY PHASE 1
PIER 2 BERTH 2
CATWALK

W306-M
ALT.
 111 OF 288

ALTERNATE No. 4