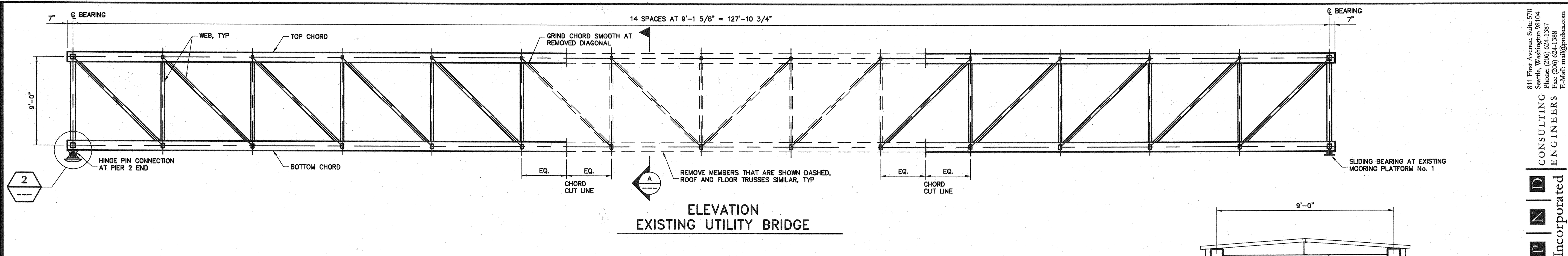
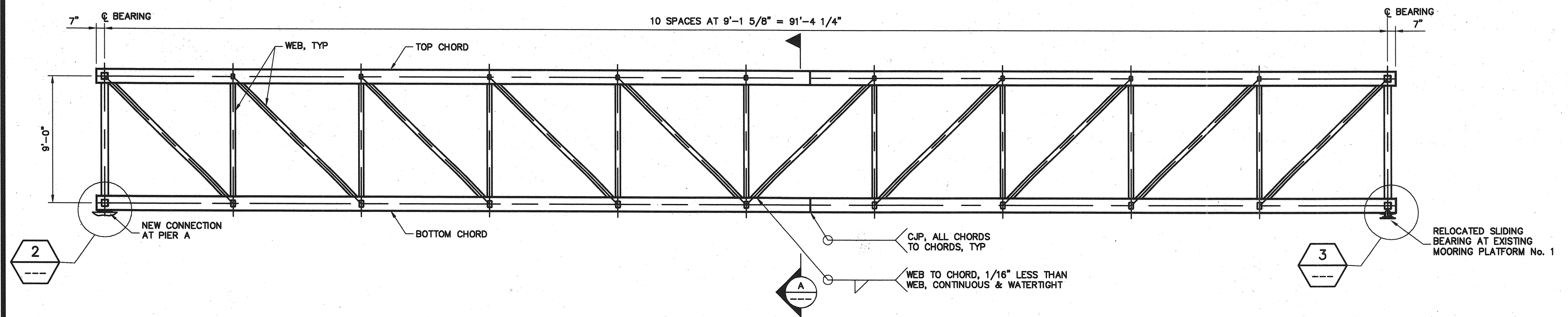


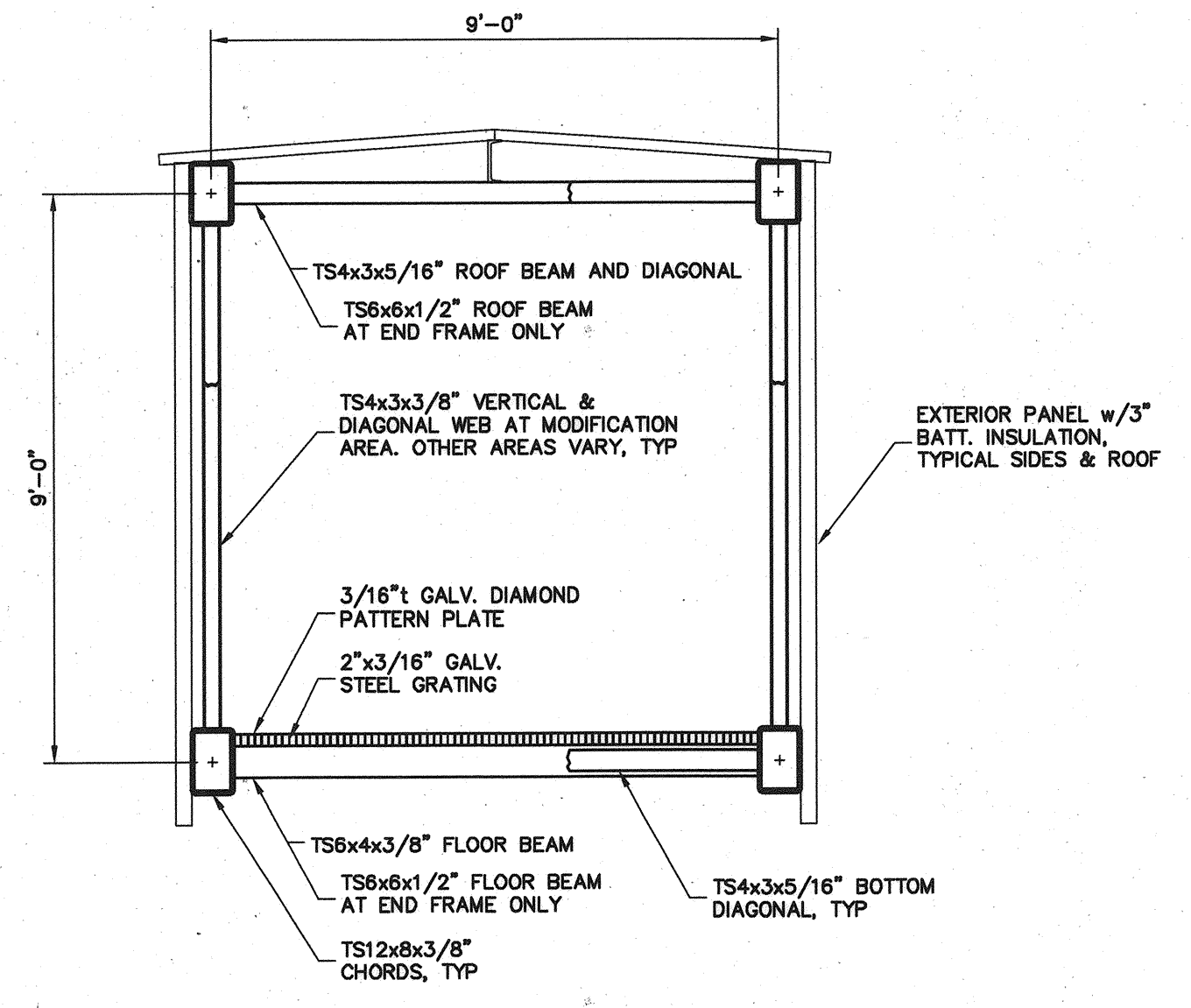
9/30/04  
 Filename: 20343802-A-W307-ALT-100



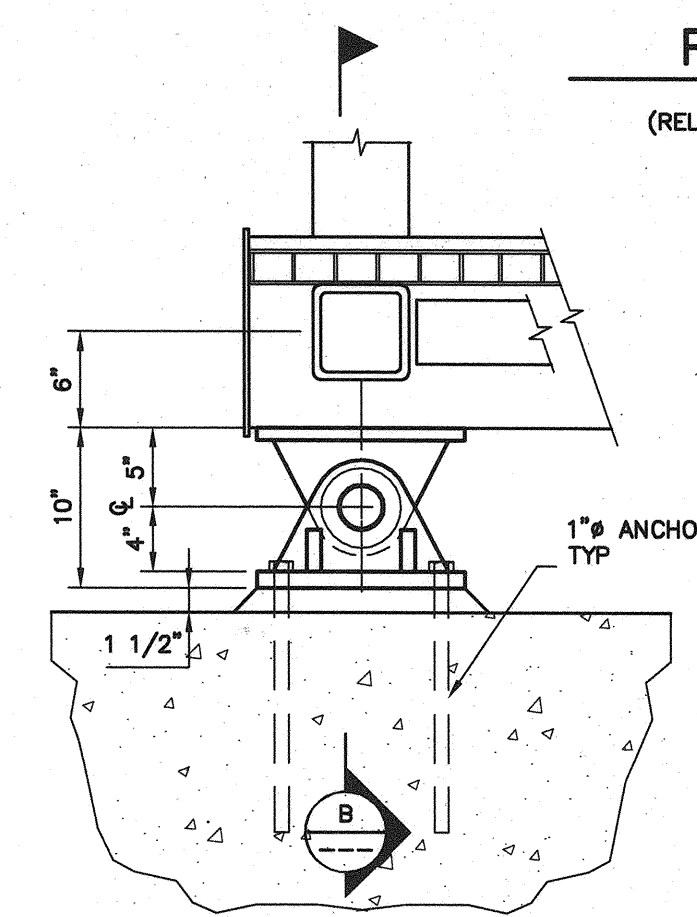
**ELEVATION  
 EXISTING UTILITY BRIDGE**



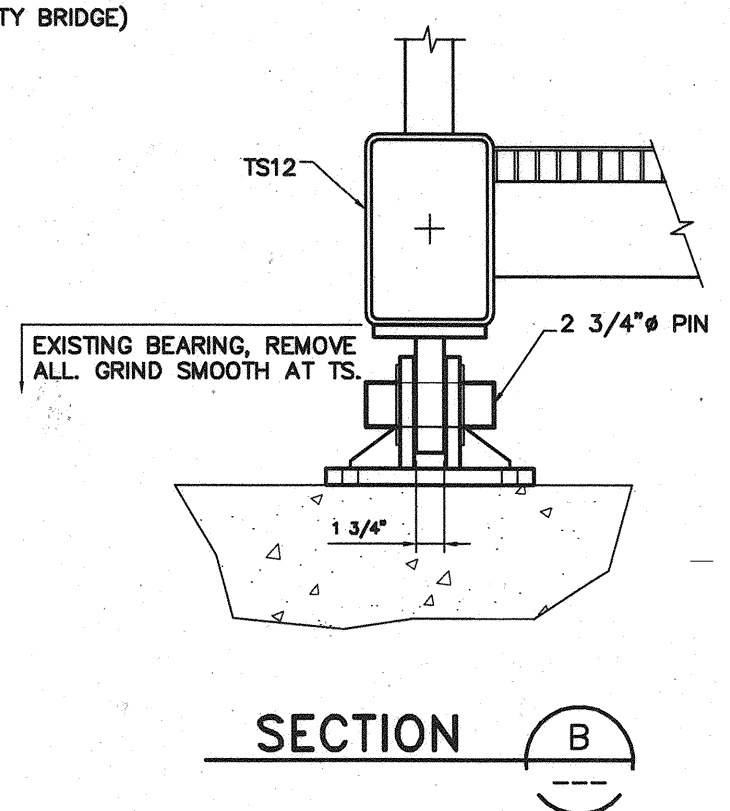
**ELEVATION  
 PASSENGER BRIDGE  
 (RELOCATED/MODIFIED EXISTING UTILITY BRIDGE)**



**SECTION A**

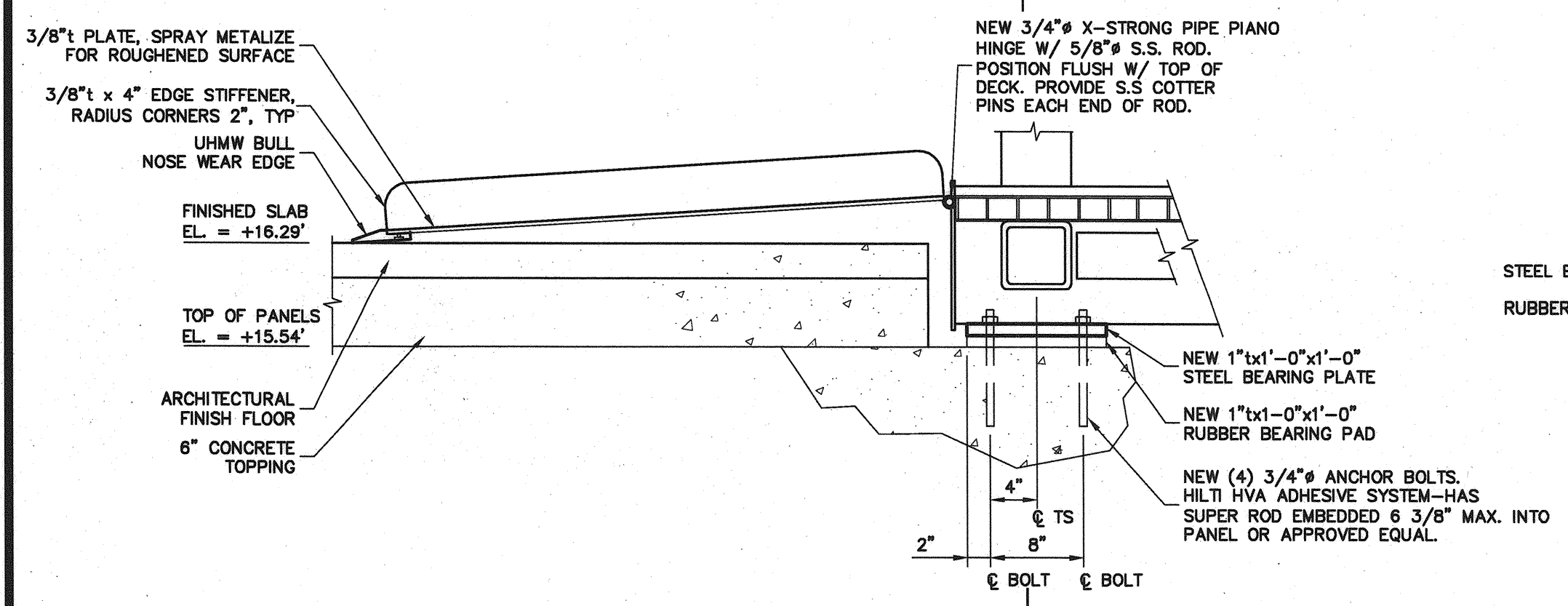


**DETAIL 1**

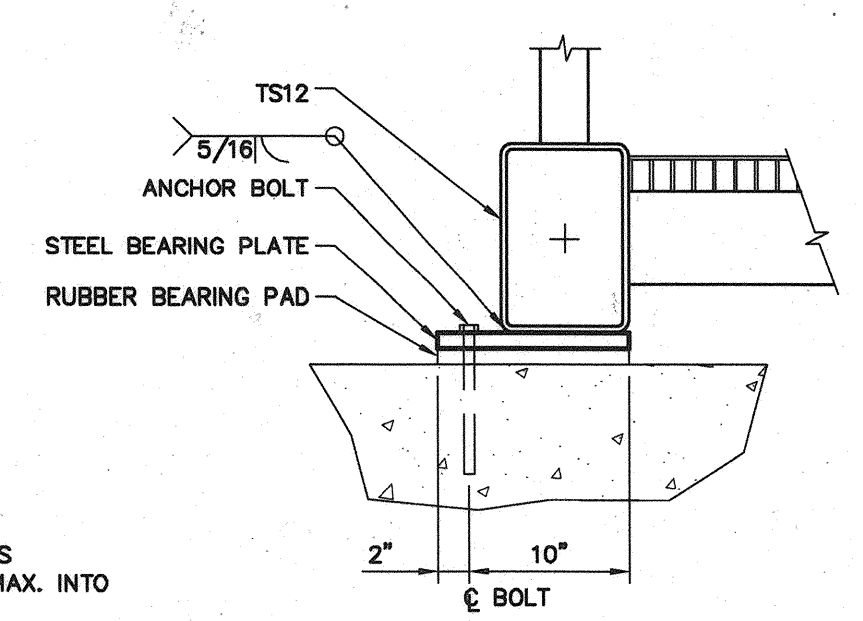


**SECTION B**

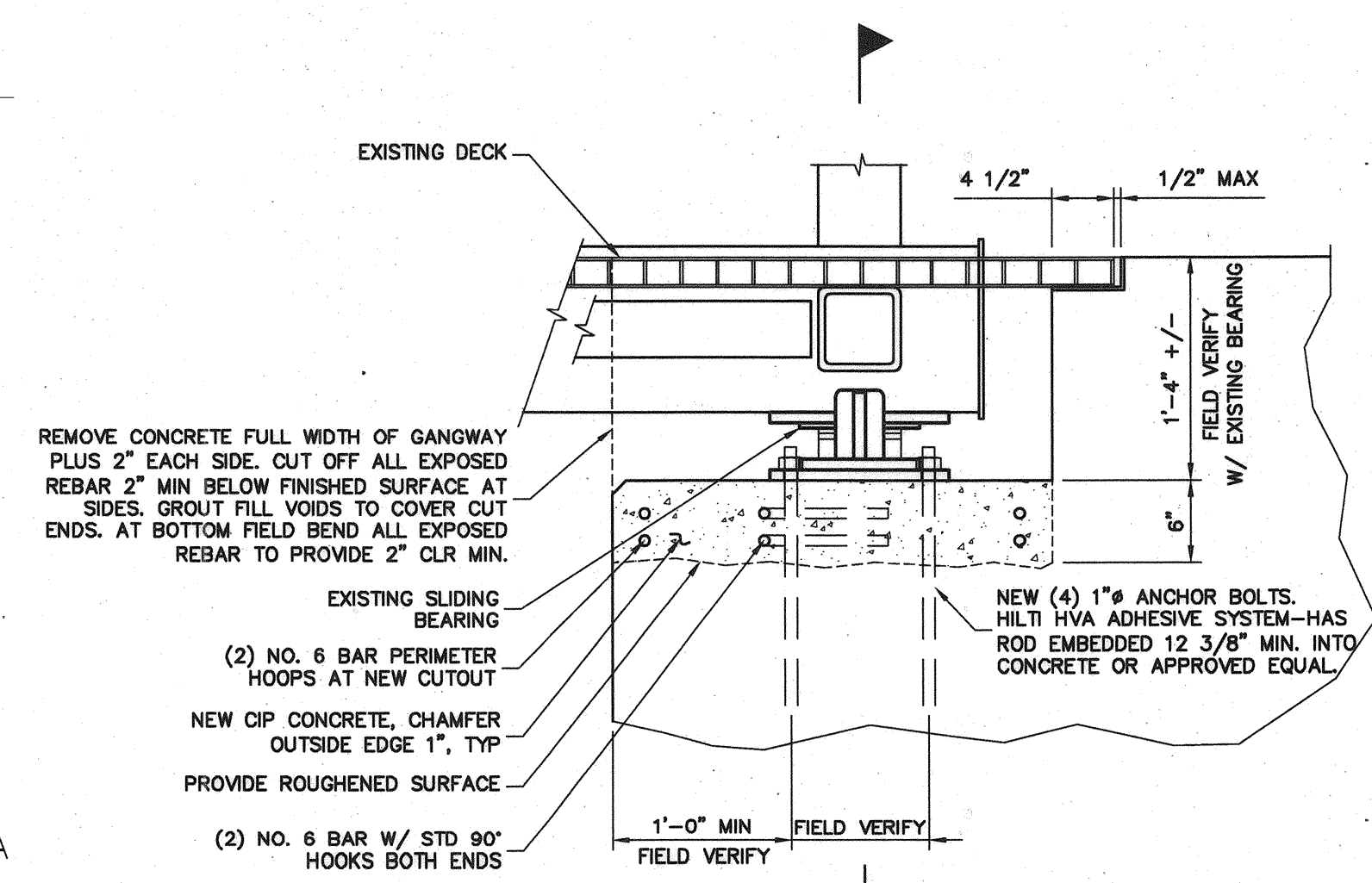
NOTE:  
 BEST FIT BRIDGE IN FIELD



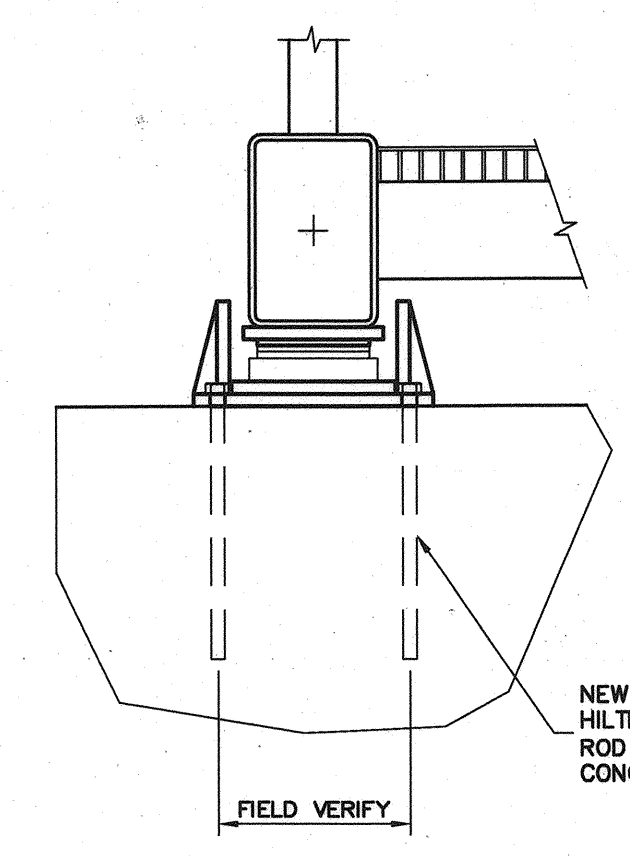
**DETAIL 2**



**SECTION C**



**DETAIL 3**



**SECTION D**

811 First Avenue, Suite 570  
 Seattle, Washington 98104  
 Phone: (206) 624-1387  
 Fax: (206) 624-1388  
 E-Mail: [info@pinnacle.com](mailto:info@pinnacle.com)

**CONSULTING ENGINEERS Incorporated**

STATE OF MAINE  
 DEPARTMENT OF TRANSPORTATION  
 PROJECT NUMBER 009215.00  
 PIN 009215.00

PROJ. MANAGER	PAUL POTLIE	DATE	09/01/04
DESIGN-DETAILED	RJ	BY	DH
CHECKED-REVIEWED	OT	DATE	09/01/04
DESIGN2-DETAILED2			
DESIGN3-DETAILED3			
REVISIONS 1			
REVISIONS 2			
REVISIONS 3			
REVISIONS 4			
FIELD CHANGES			

CITY OF PORTLAND  
 OCEAN GATEWAY PHASE 1  
 PIER A  
 RELOCATED PASSENGER BRIDGE

W307-A  
 ALT.  
 102 OF 288

**ALTERNATE No. 8**