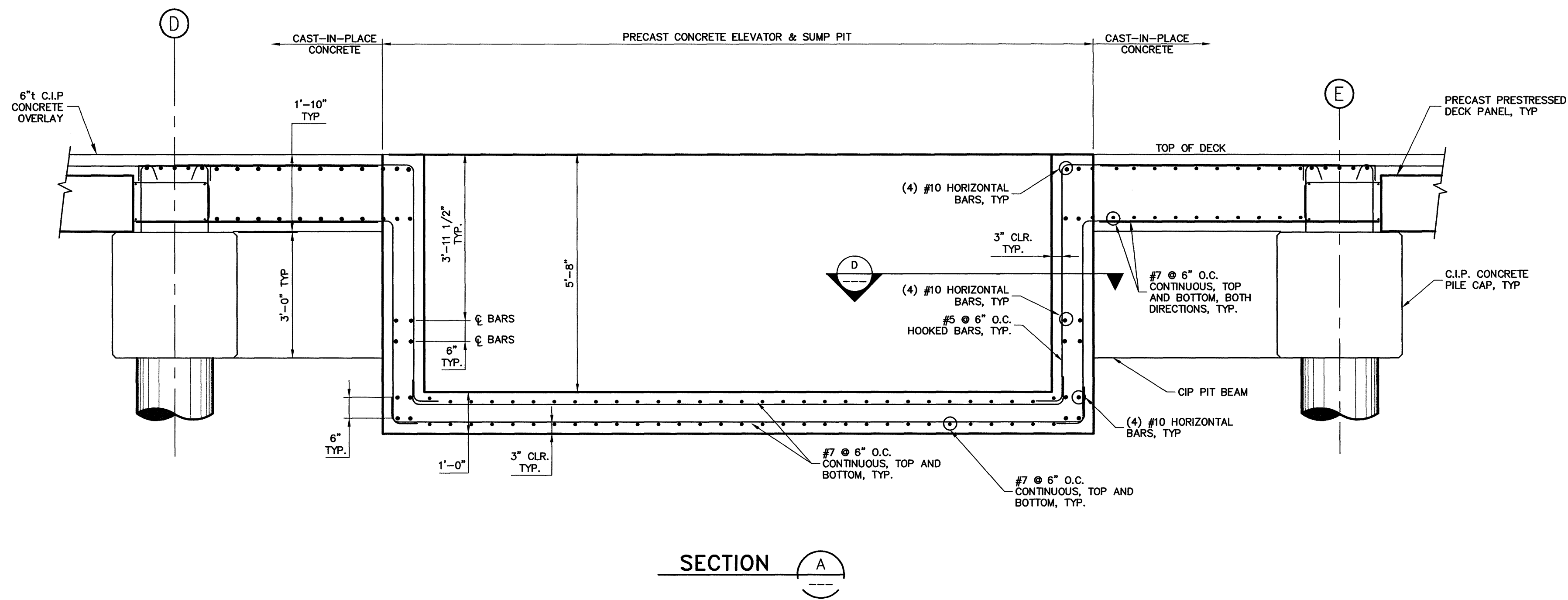


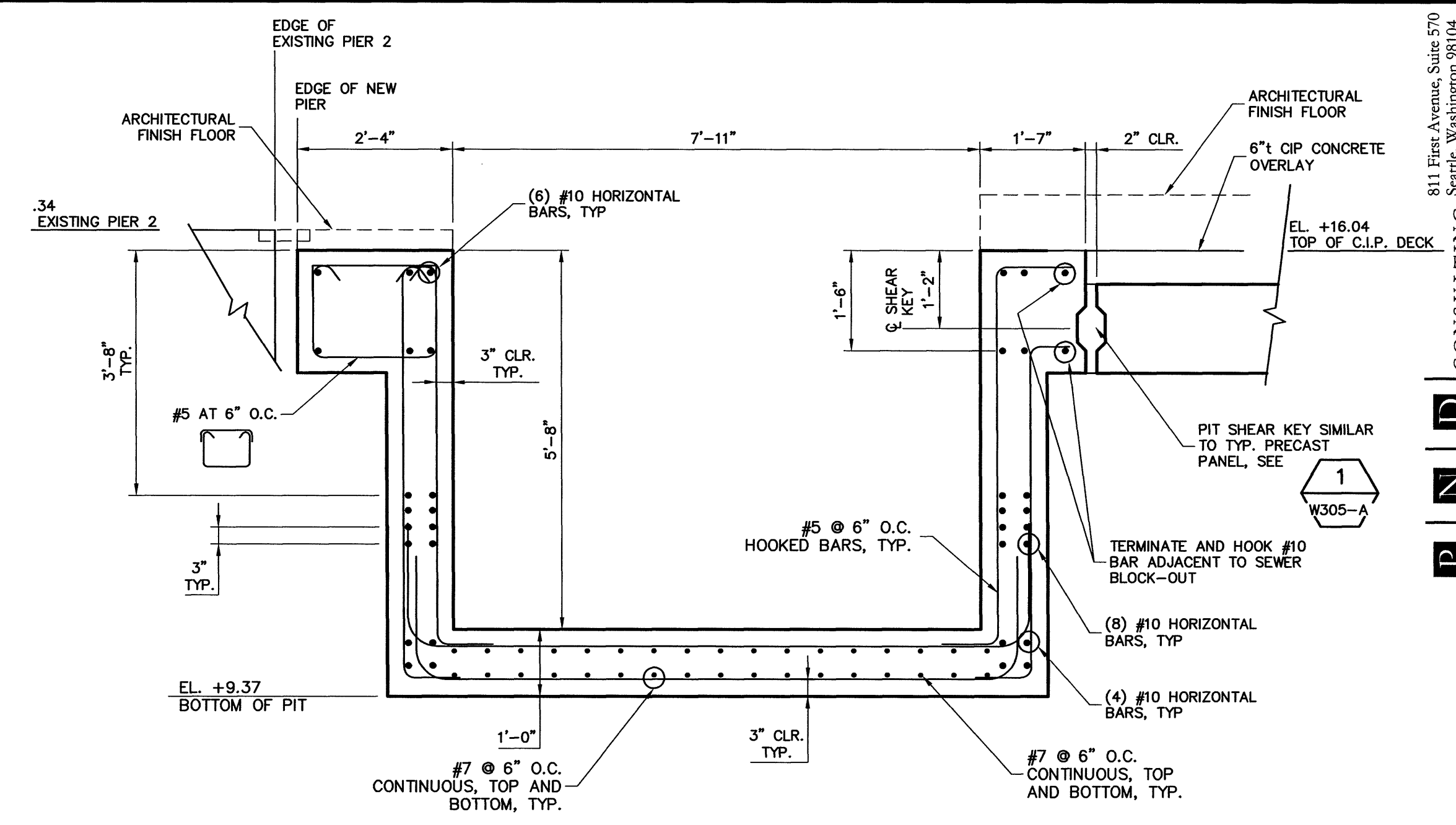
1 ELEVATOR & SUMP PIT PLAN
 W102-A

BAR SIZE	MINIMUM LAP SPLICE LENGTH	HOOK LENGTH
#4	3'-4"	8"
#5	5'-2"	10"
#10	8'-6"	1'-10"

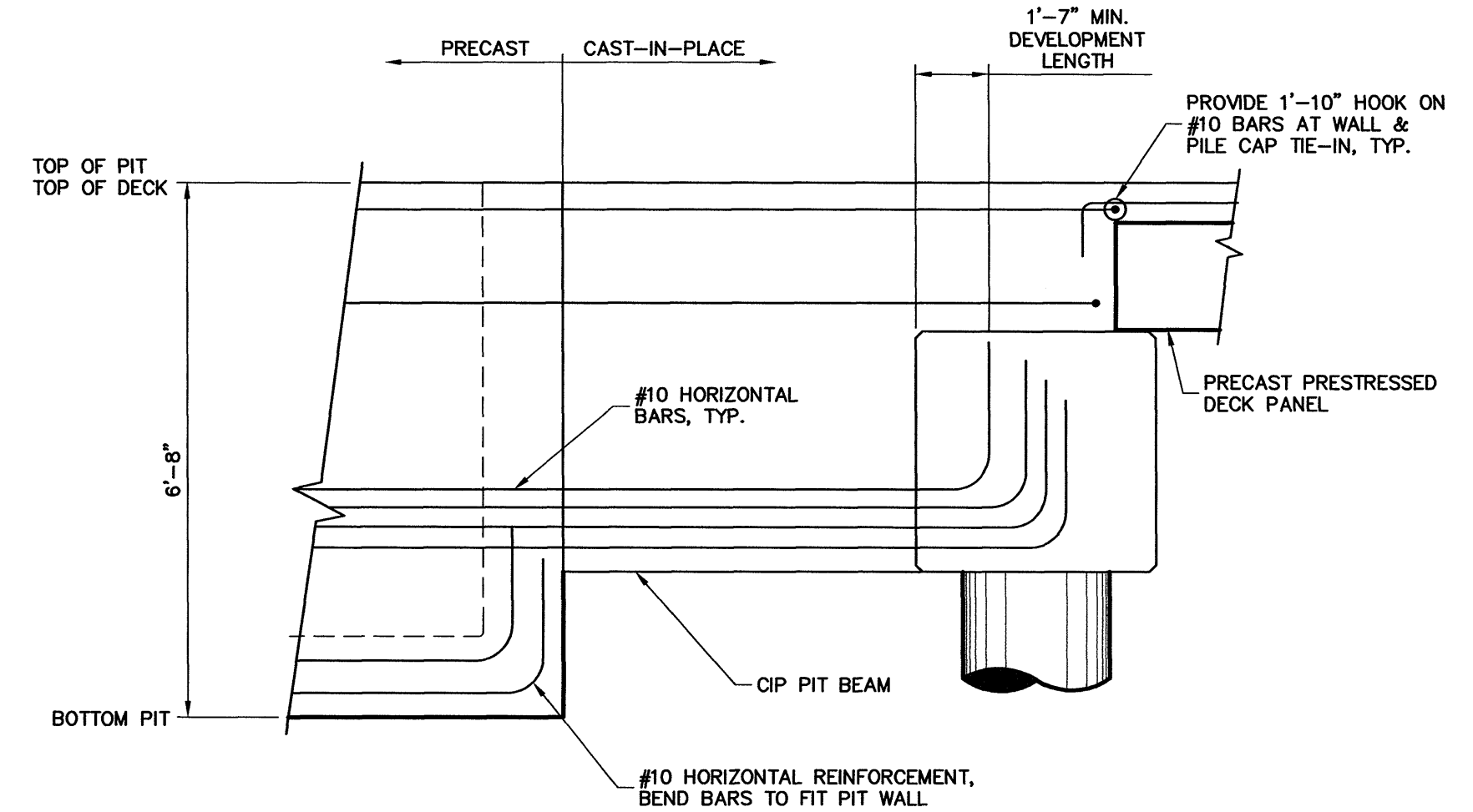
NOTE: ALL REBAR SHALL BE EPOXY COATED



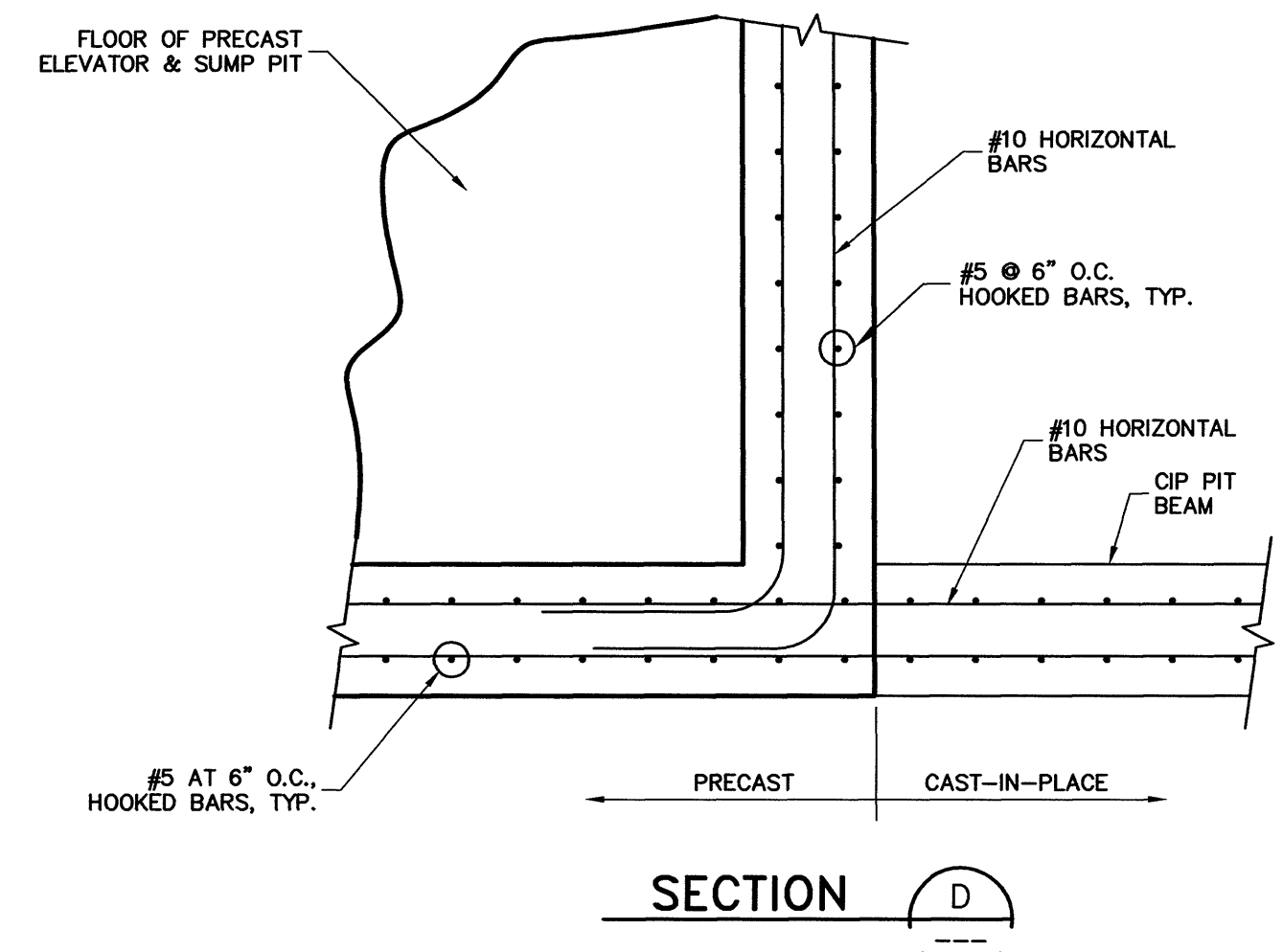
SECTION A



SECTION B



SECTION C

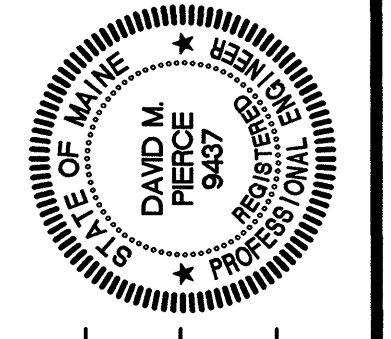


SECTION D

811 First Avenue, Suite 570
 Seattle, Washington 98104
 Phone: (206) 624-1387
 Fax: (206) 624-1388
 E-Mail: mail@pninotes.com

PNINOTES
 Incorporated
 CONSULTING ENGINEERS

STATE OF MAINE
 DEPARTMENT OF TRANSPORTATION
 PROJECT NUMBER 009215.00
 PIN 009215.00



DAVID M. PIERCE
 P.E. NUMBER 9437
 SIGNATURE: [Signature]
 DATE: 10/28/05

DATE	BY	PROJ. MANAGER	PAUL POTTE
09/07/04	DH	DESIGN-DETAILED	RJ
09/07/04	DP	CHECKED-REVIEWED	OT
		DESIGN-DETAILED	
		DESIGN-DETAILED	
		REVISIONS 1	PIER VAAP 22
		REVISIONS 2	
		REVISIONS 3	
		REVISIONS 4	
		FIELD CHANGES	

CITY OF PORTLAND
 OCEAN GATEWAY PHASE 1
 PIER A
 ELEVATOR & SUMP PIT DETAILS

W303-A