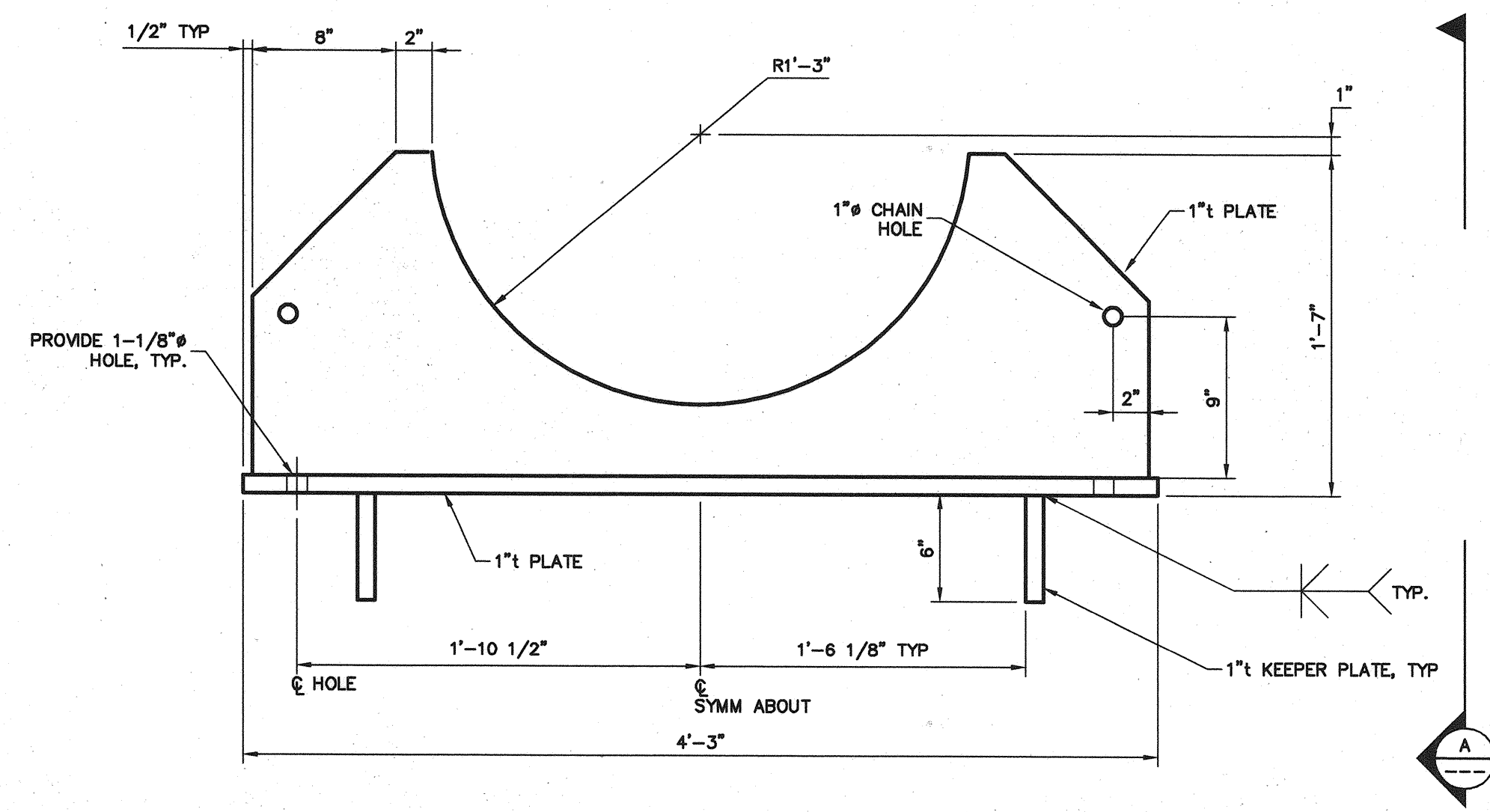
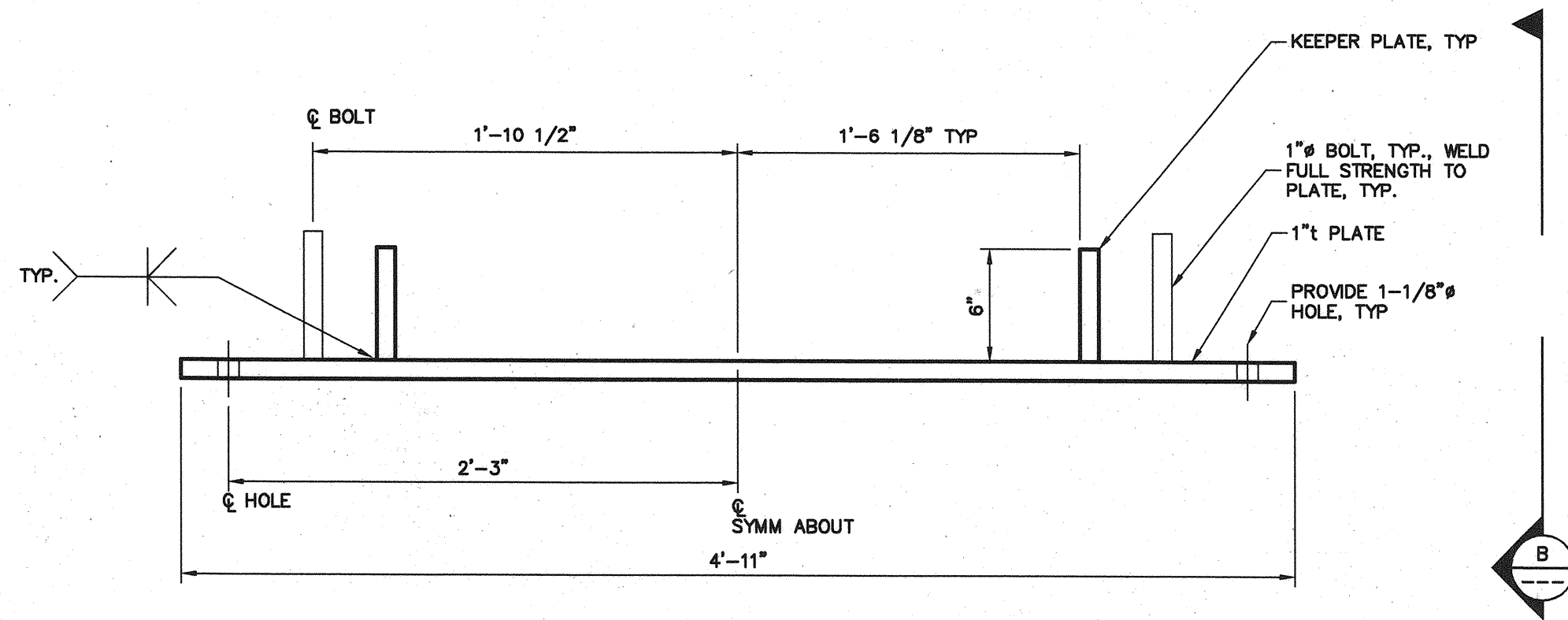


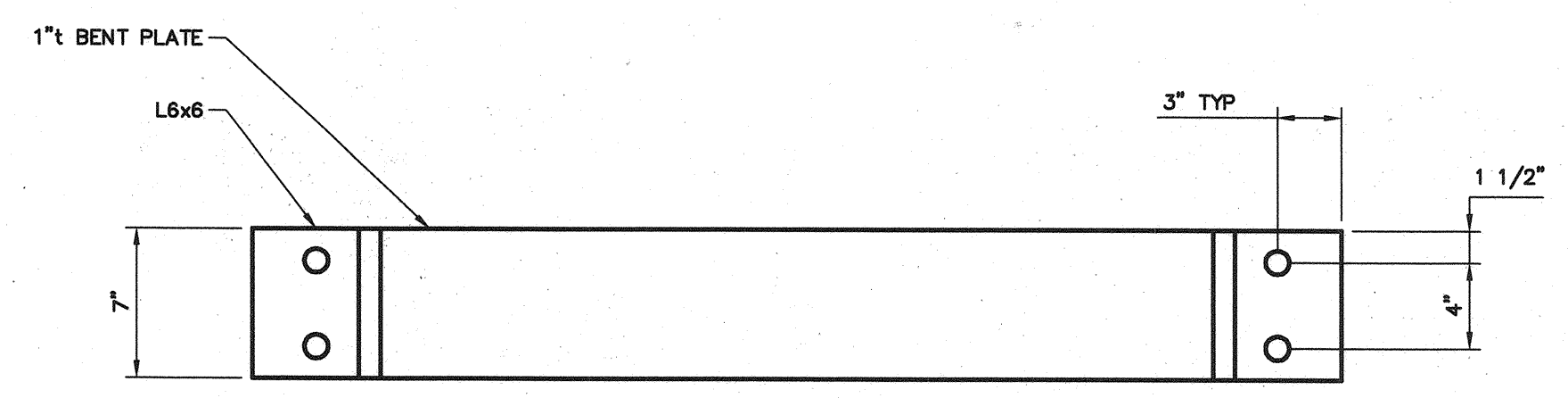
9/30/04
Filename: 20343802-F-W300-100



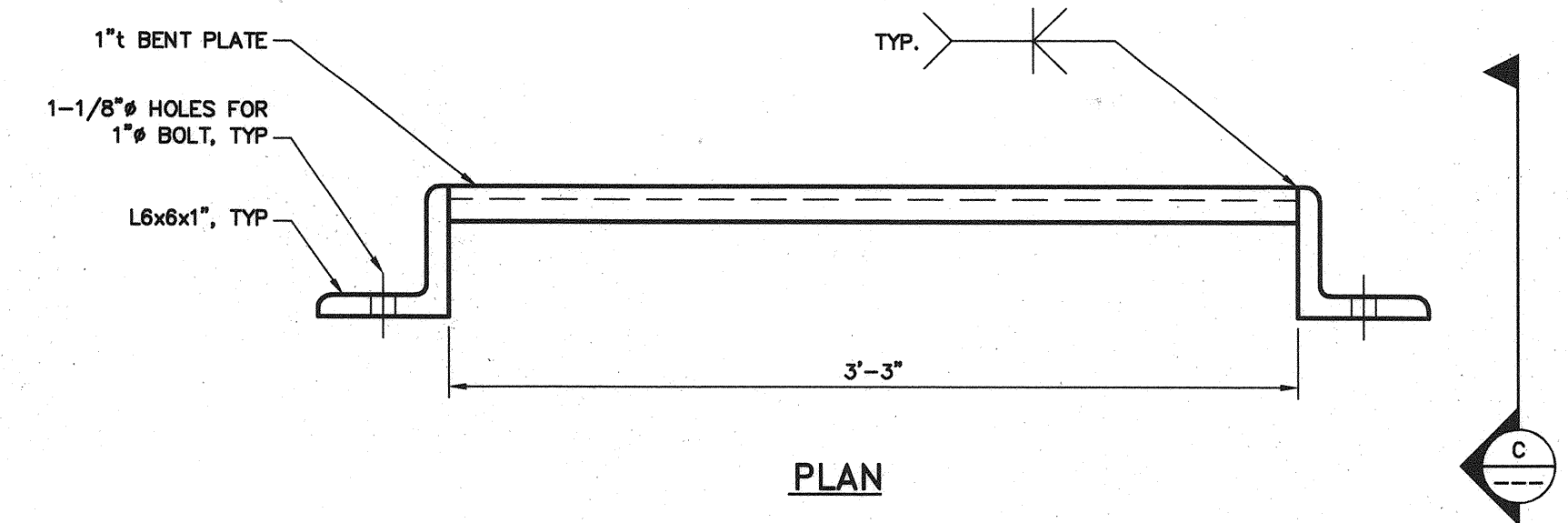
PILE ATTACHMENT



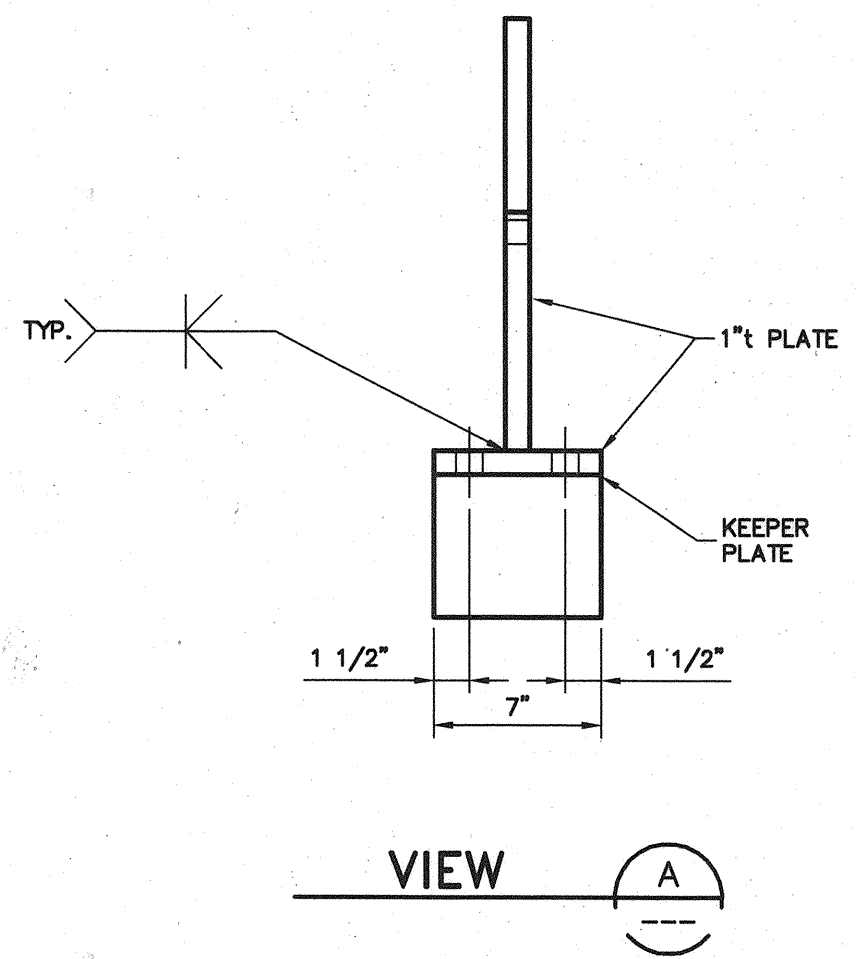
DOCK ATTACHMENT



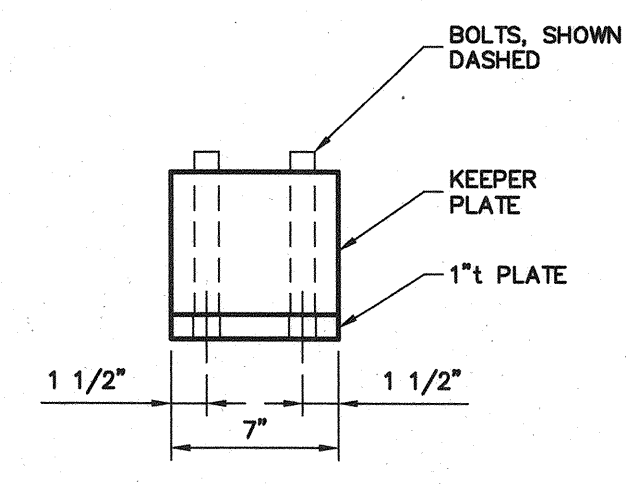
ELEVATION



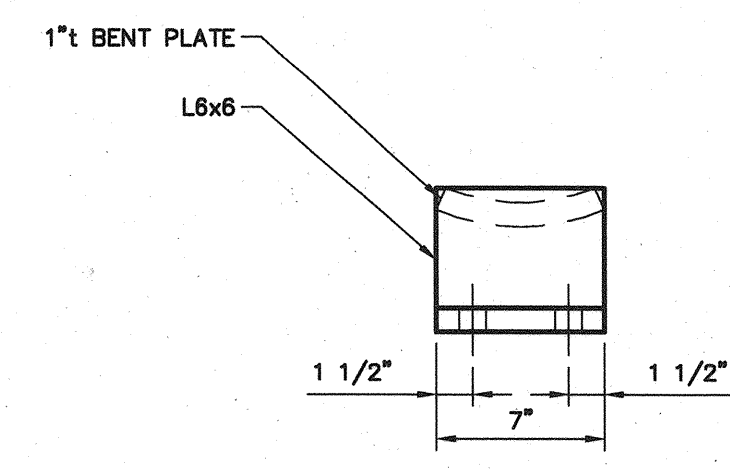
**PLAN
FENDER CLAMP**



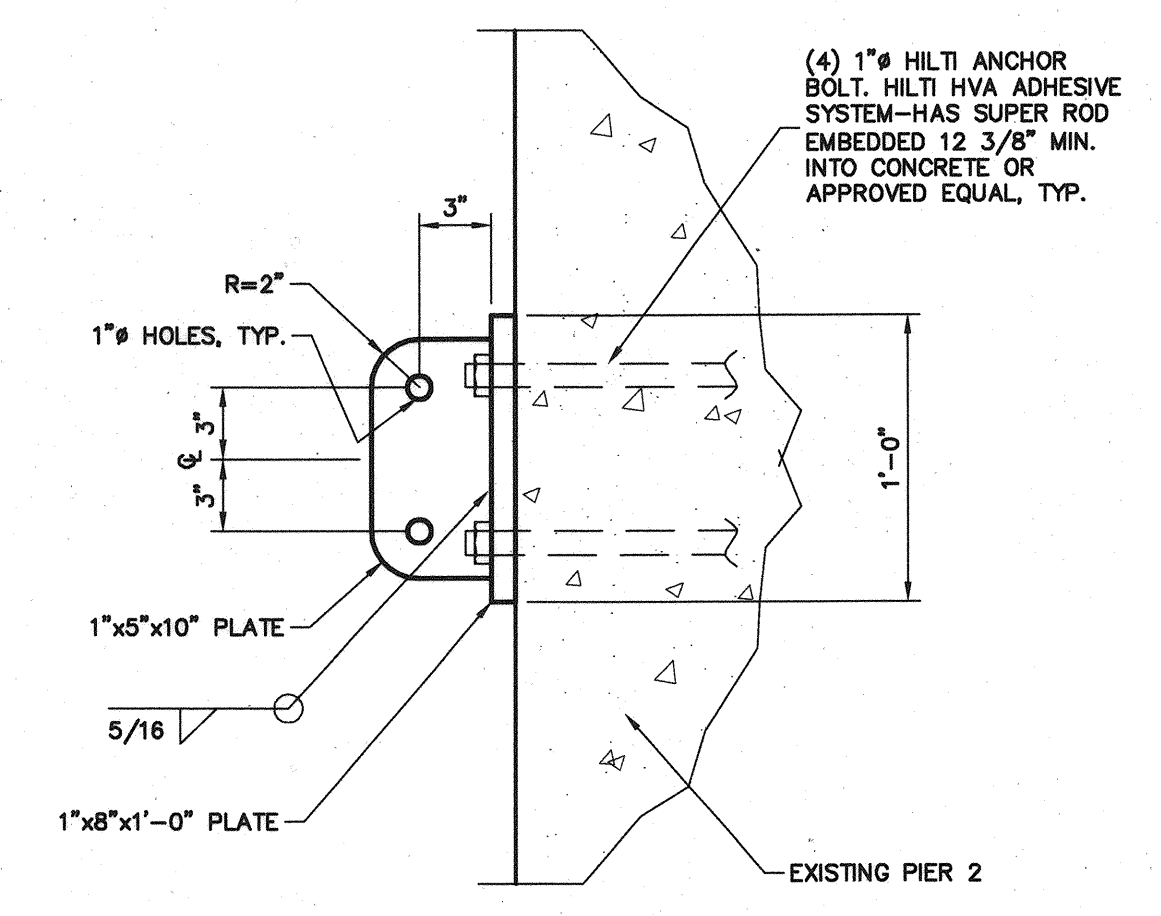
VIEW A



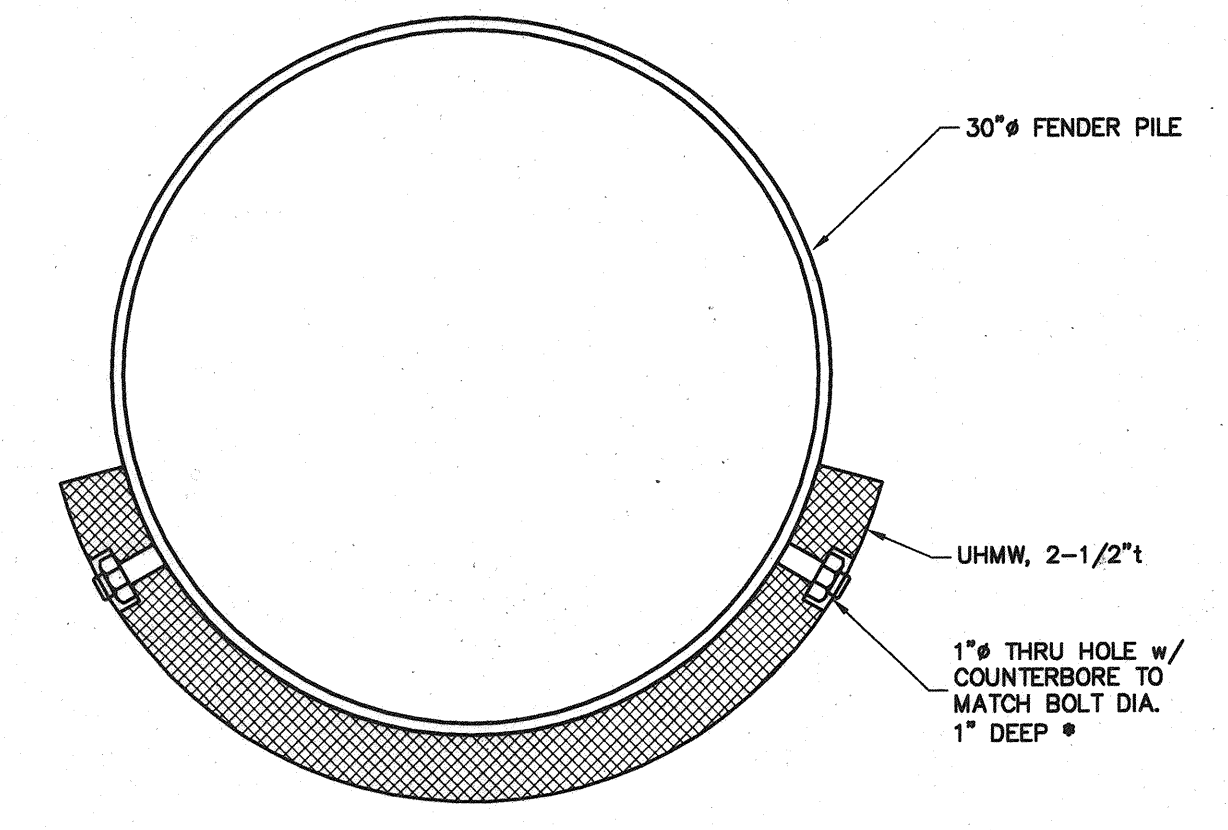
VIEW B



VIEW C

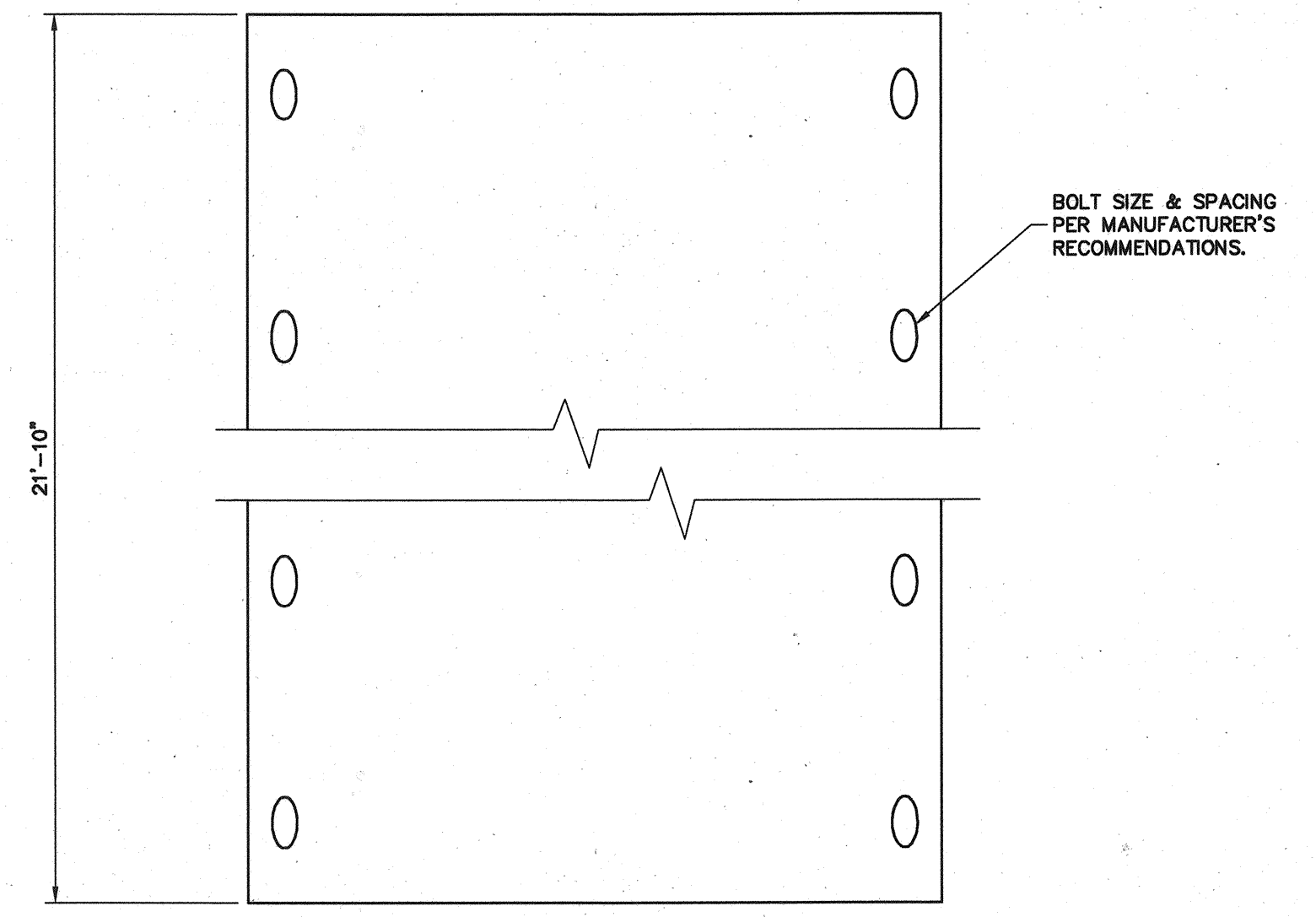


CHAIN ANCHOR
CHAIN NOT SHOWN FOR CLARITY
NOTE: PROVIDE BOTH HOLES IN ANCHOR AS PART OF THE BASE BID.



PLAN

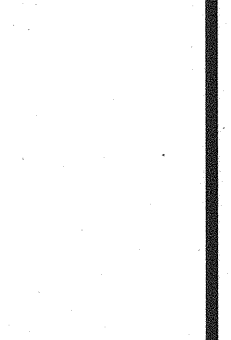
* ADJUST TO FIT MANUFACTURER'S RECOMMENDATIONS



ELEVATION

UHMW FACING

811 First Avenue, Suite 570
Seattle, Washington 98104
Phone: (206) 441-1387
Fax: (206) 441-1387
E-Mail: info@pnides.com



INCORPORATED
CONSULTING ENGINEERS
STATE OF MAINE
DEPARTMENT OF TRANSPORTATION
PROJECT NUMBER 009215.00
PIN 009215.00

PROJ. MANAGER	DATE	BY	DATE
PAUL POTTLE	09/07/04	DH	09/07/04
DESIGN-DETAILED	TWB	DP	
CHECKED-REVIEWED	RJ		
DESIGN-DETAILED2			
DESIGN-DETAILED3			
REVISIONS 1			
REVISIONS 2			
REVISIONS 3			
REVISIONS 4			
FIELD CHANGES			

CITY OF PORTLAND
OCEAN GATEWAY PHASE 1
PIER 2 FENDERS
DETAILS

W300-F
87 OF 288