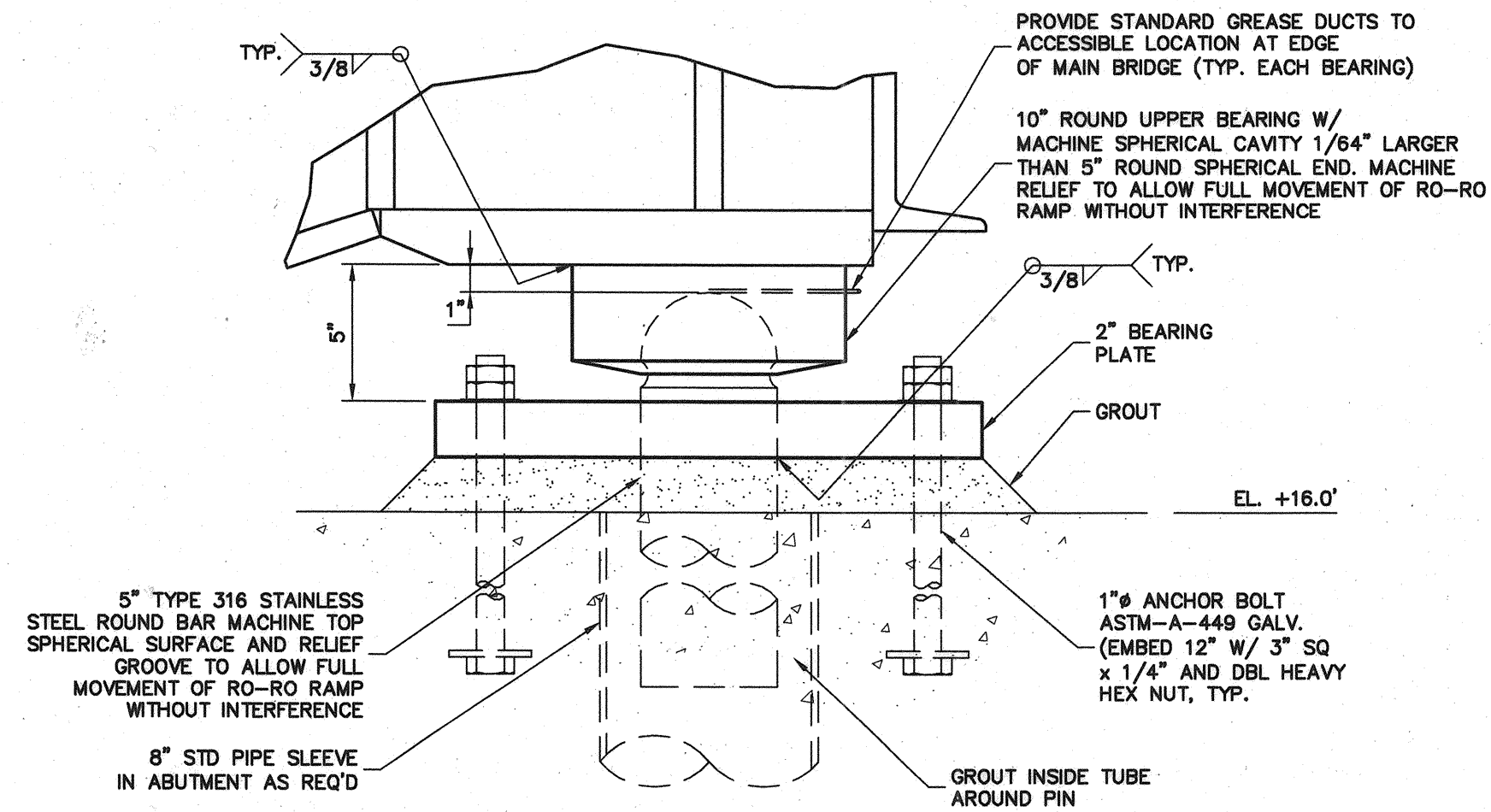
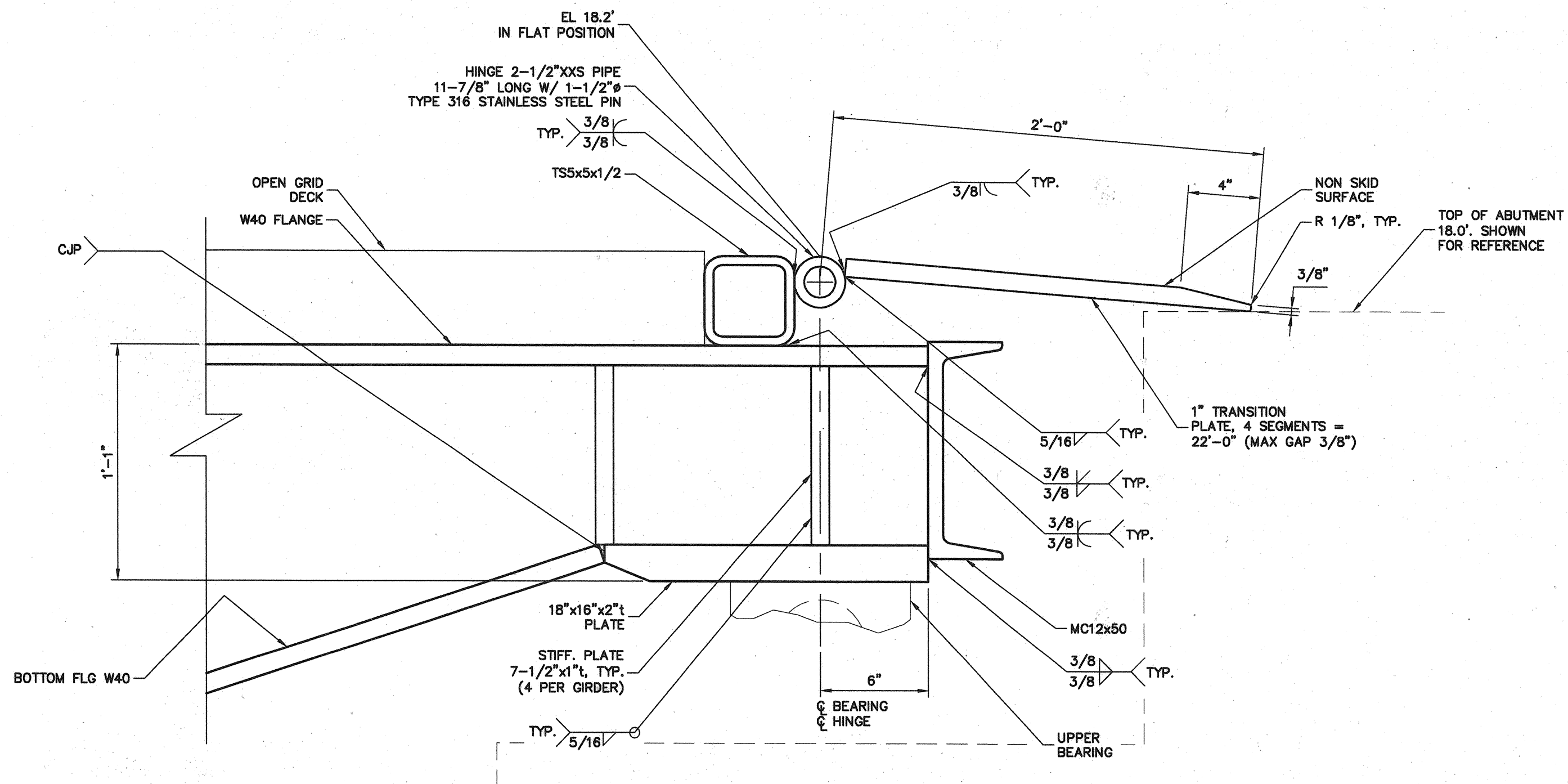


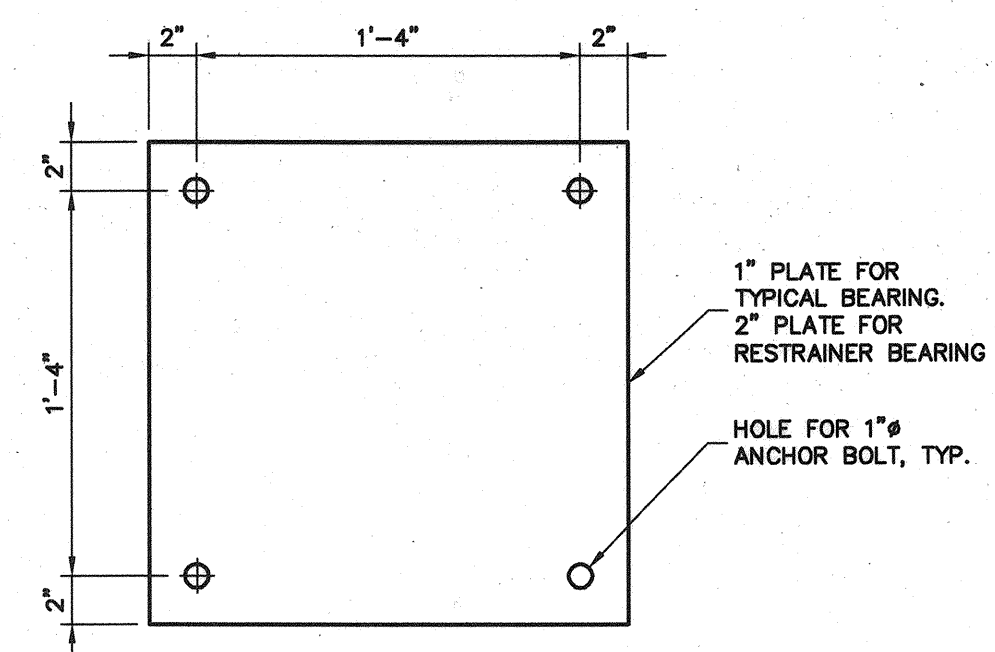
TYPICAL BRIDGE BEARING



RESTRAINER BEARING
AT CENTER OF BRIDGE



MAIN BRIDGE ABUTMENT
SHOWN IN FLAT POSITION



BEARING PLATE

WELD NOTE:
ALL JOINTS SHALL BE WELDED CONTINUOUS ALL AROUND UNLESS OTHERWISE NOTED.
ALL FILLET WELDS SHALL BE 5/16" OR EQUIVALENT BEVEL UNLESS OTHERWISE NOTED.
ALL BUTT WELD JOINTS SHALL BE COMPLETE JOINT PENETRATION (CJP) WELDED.

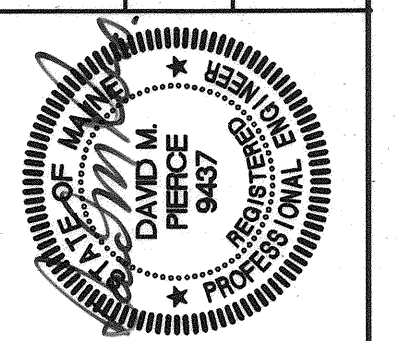
SURFACE NOTE:
ALL MACHINE SURFACES SHALL HAVE SMOOTHNESS OF 125 MICRO INCHES UNLESS NOTED.

9/14/04
Filename: 20343802-R-W303-100

811 First Avenue, Suite 570
Seattle, Washington 98104
Phone: (206) 424-1387
Fax: (206) 424-1388
E-Mail: info@pjb.com

INCORPORATED
CONSULTING ENGINEERS

STATE OF MAINE
DEPARTMENT OF TRANSPORTATION
PROJECT NUMBER 009215.00
PIN 009215.00



SIGNATURE
P.E. NUMBER 9437
DATE 12/6/04

DATE	BY	PROJ. MANAGER	PAUL POTTLE
09/01/04	GD	DESIGN-DETAILED	IN
09/01/04	DP	CHECKED-REVIEWED	RJ
		DESIGN-2-DETAILED	2
		DESIGN-3-DETAILED	3
		REVISIONS	1
		REVISIONS	2
		REVISIONS	3
		REVISIONS	4
		FIELD CHANGES	

CITY OF PORTLAND
OCEAN GATEWAY PHASE 1
MAIN BRIDGE BEARING

W303-R