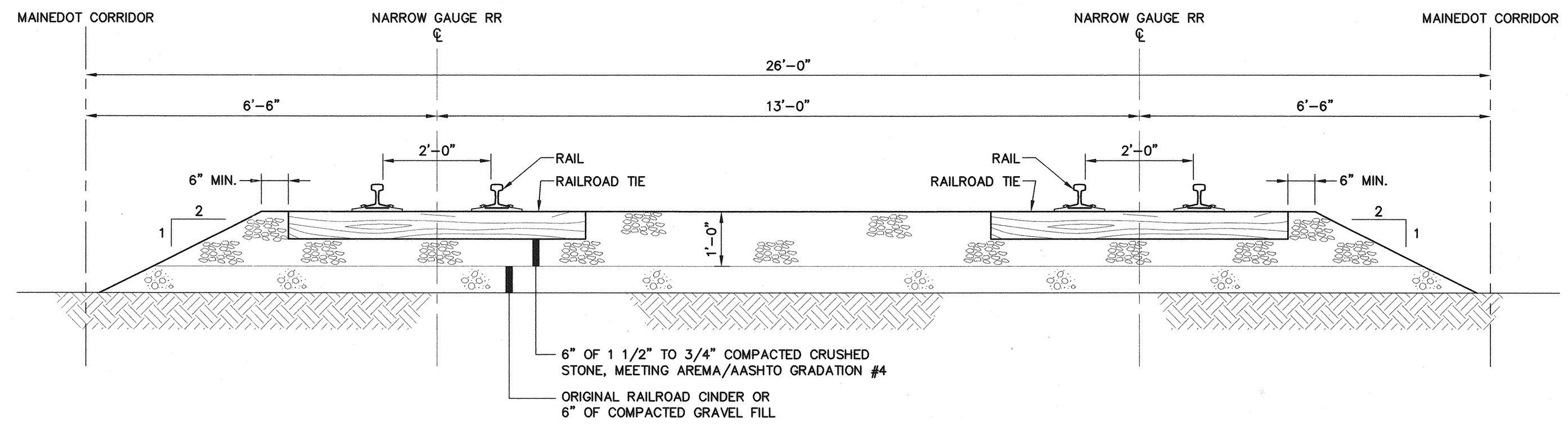
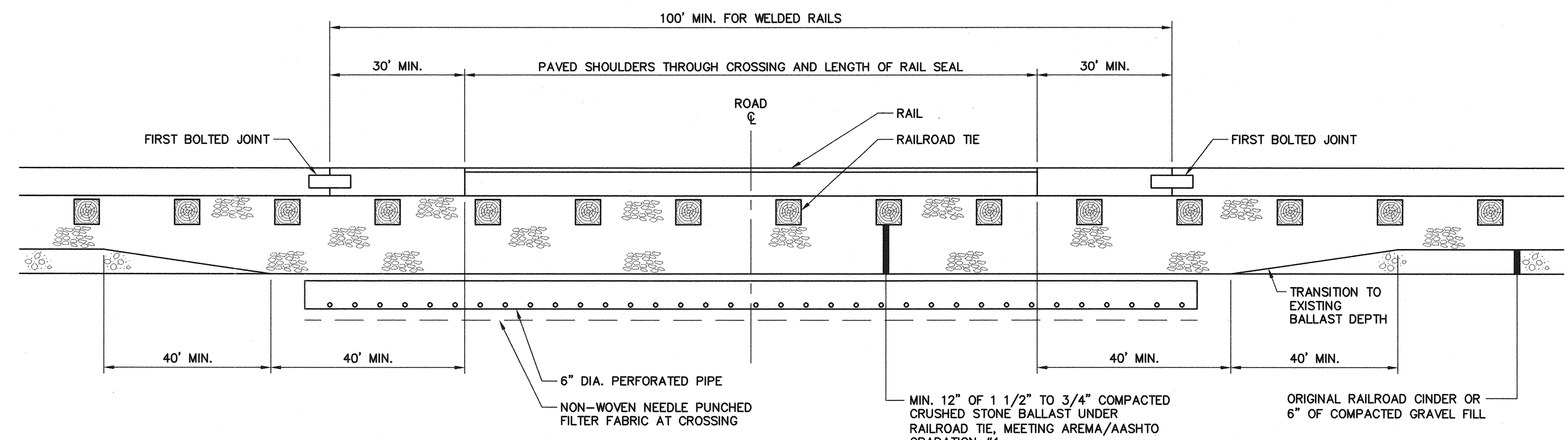
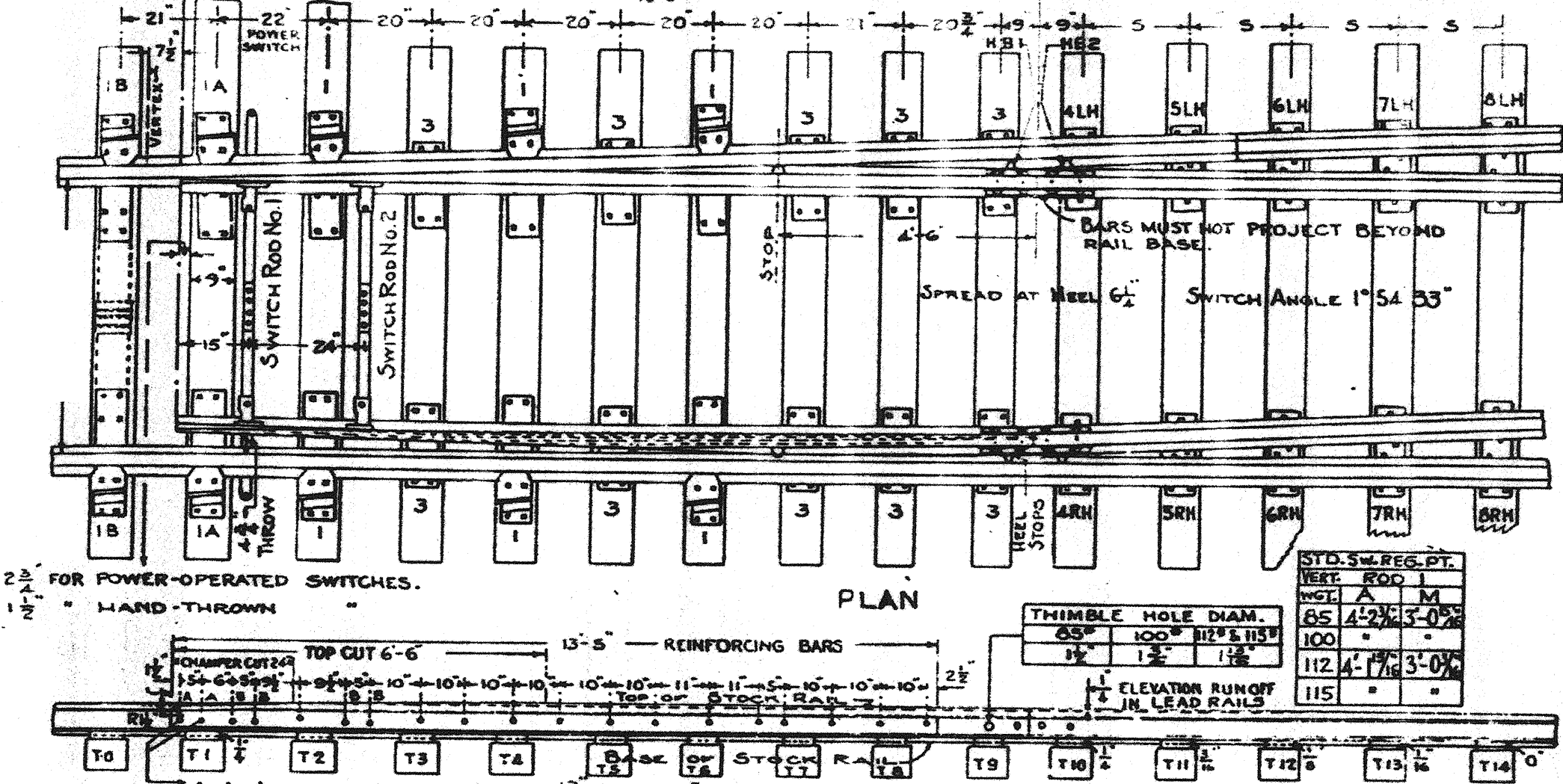


RAIL-TRAIL CROSSING DETAIL
N.T.S.

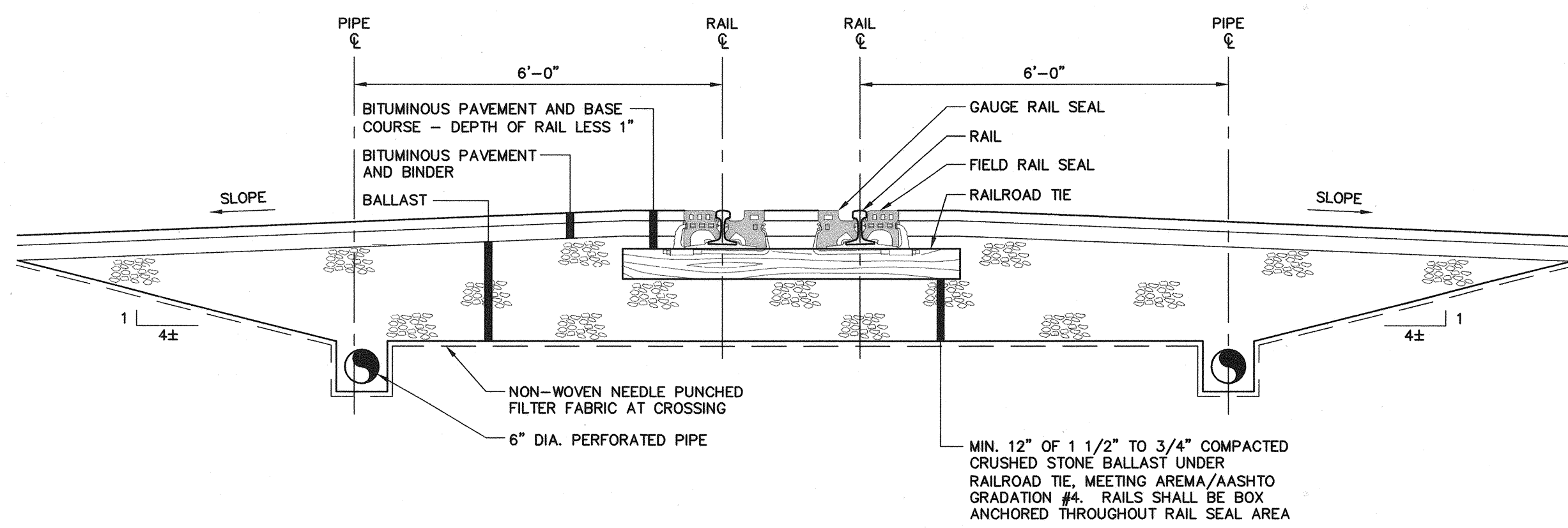


TYPICAL RAILROAD TRACK CROSS-SECTION
SCALE: 1/2" = 1'-0"

CLIP BOLTS 1/2" DIA. FOR 85" & 100" RAIL; 1" DIA. FOR 112" & 115" RAIL. STANDARD SQ. HEADS, HEX. NUTS, SPRING NUTLOCKS & COTTERS. 15'-3"
WHEN MANGANESE POINTS OR SAMSON SWITCHES ARE SPECIFIED, CHANGE CLIPS TO CONFORM.
ROD BOLTS 1" DIA. FOR 85" & 100" RAIL. STANDARD THREAD, SQ. HEADS, HEX. NUTS, AND COTTERS.



SECTION THROUGH TRACK

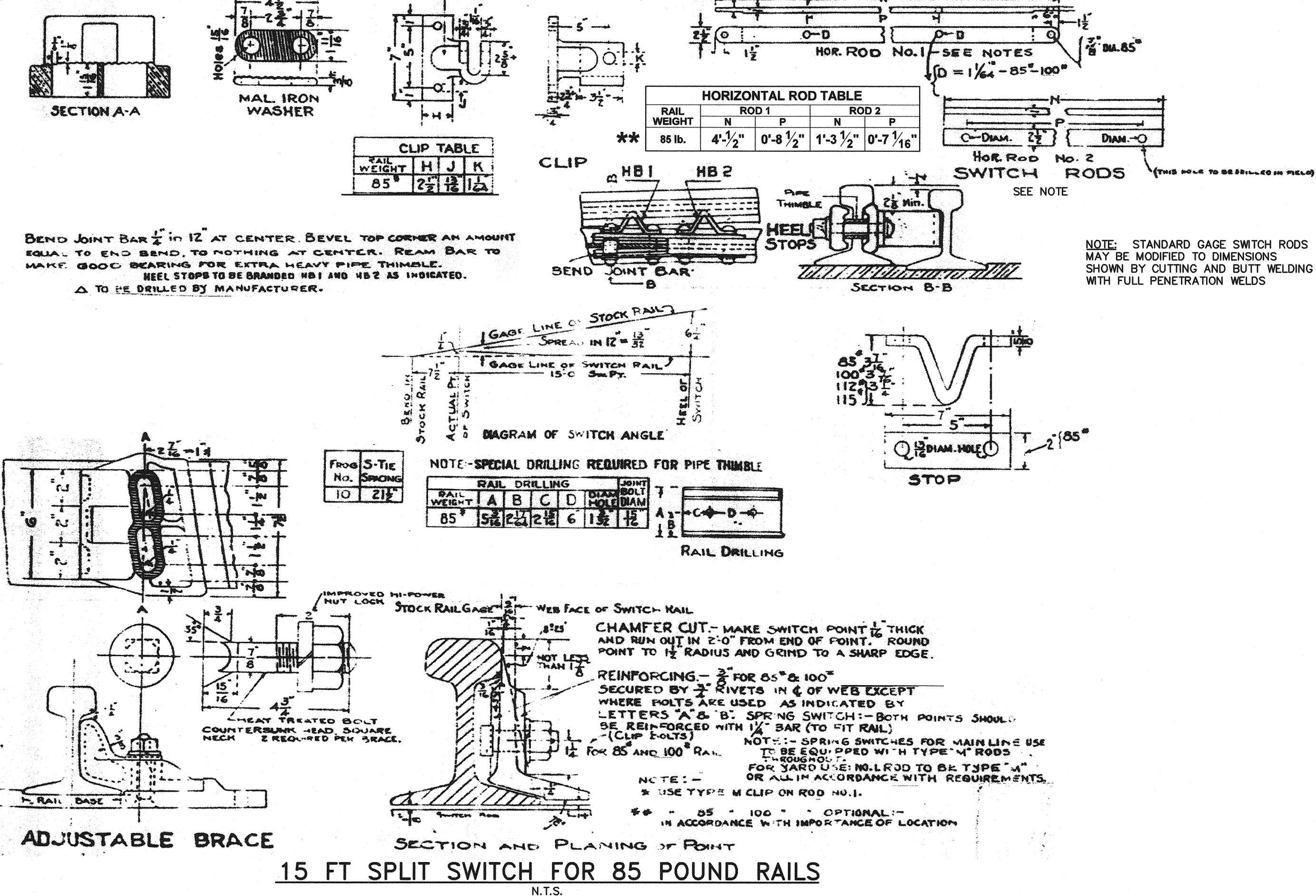


SECTION THROUGH ROAD

NOTES:

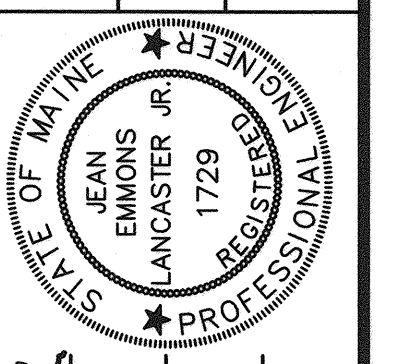
1. NEW CROSCOTED 6'-0" LONG, 7" GRADE TIES THROUGH CROSSING AND UNDER WELDED RAIL TO APPROXIMATELY 30' EACH SIDE OF CROSSING SHOULDER.
2. 100 LB CONTINUOUS WELDED RAIL THROUGH CROSSING TO APPROXIMATELY 30' BEYOND EACH SIDE OF CROSSING SHOULDER. THE MINIMUM LENGTH OF WELDED RAIL THROUGH CROSSING SHALL BE 100'.
3. BALLAST TO EXTEND ALONG TRACK BEYOND EACH SIDE OF CROSSING FOR A DISTANCE OF AT LEAST 40' AT SAME MINIMUM DEPTH AS THROUGH CROSSING THEN TAPER TO A MINIMUM DEPTH UNDER TIES OF 6" WITHIN A MINIMUM DISTANCE OF THE NEXT 40'.
4. RAILSEAL SHALL BE PERFORMANCE POLYMERS, INC., PRODUCT BULLETIN 103, CONTRACTOR GRADE OR EQUAL. RAILSEAL SHALL BE INSTALLED ON GAUGE AND FIELD SIDES OF 100 LB WELDED RAIL WITH CLAMPS IN CROSSINGS IN ACCORDANCE WITH MANUFACTURER'S REQUIREMENTS (SEE PRODUCT BULLETIN 103).
5. THE SURFACE OF EACH HIGHWAY APPROACH SHALL SLOPE SLIGHTLY DOWNWARD AND AWAY FROM THE NEAR RAIL TO DIRECT SURFACE WATER AWAY FROM THE TRACK.

RAIL-HIGHWAY GRADE CROSSING DETAIL
N.T.S.



J.E. LANCASTER, P.E.
Railroad Engineering
PO Box 377, Gray, ME 04039-9377

STATE OF MAINE
DEPARTMENT OF TRANSPORTATION
PROJECT NUMBER 009215.00
PIN 009215.00



PROJ. MANAGER	PAUL POTTE	DATE	10/18/04
DESIGN-DETAILED	JEL	DATE	10/17/04
CHECKED-REVIEWED	JEL	DATE	10/17/04
DESIGN-DETAILED	JEL	DATE	10/17/04
REVISIONS 1			
REVISIONS 2			
REVISIONS 3			
REVISIONS 4			
FIELD CHANGES			

CITY OF PORTLAND
OCEAN GATEWAY PHASE 1
RAILROAD DETAILS - 2

C408