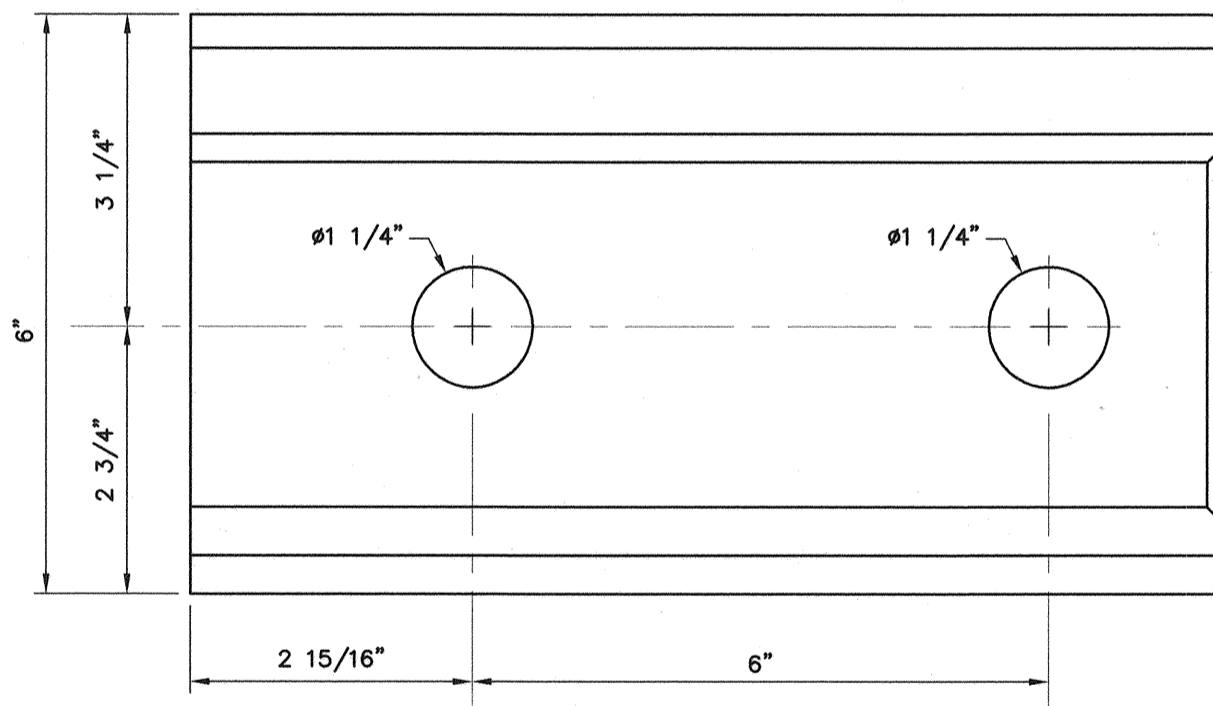
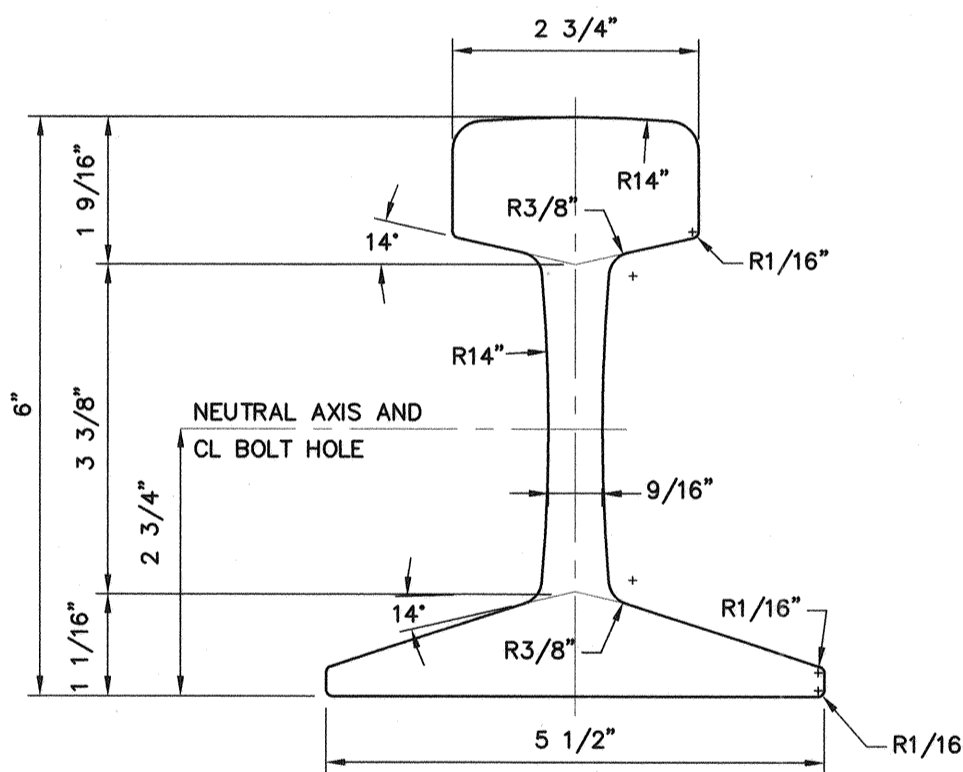


NO. 10 TURNOUT DETAIL
SCALE: 1/2" = 1'-0"



MATHEMATICAL PROPERTIES

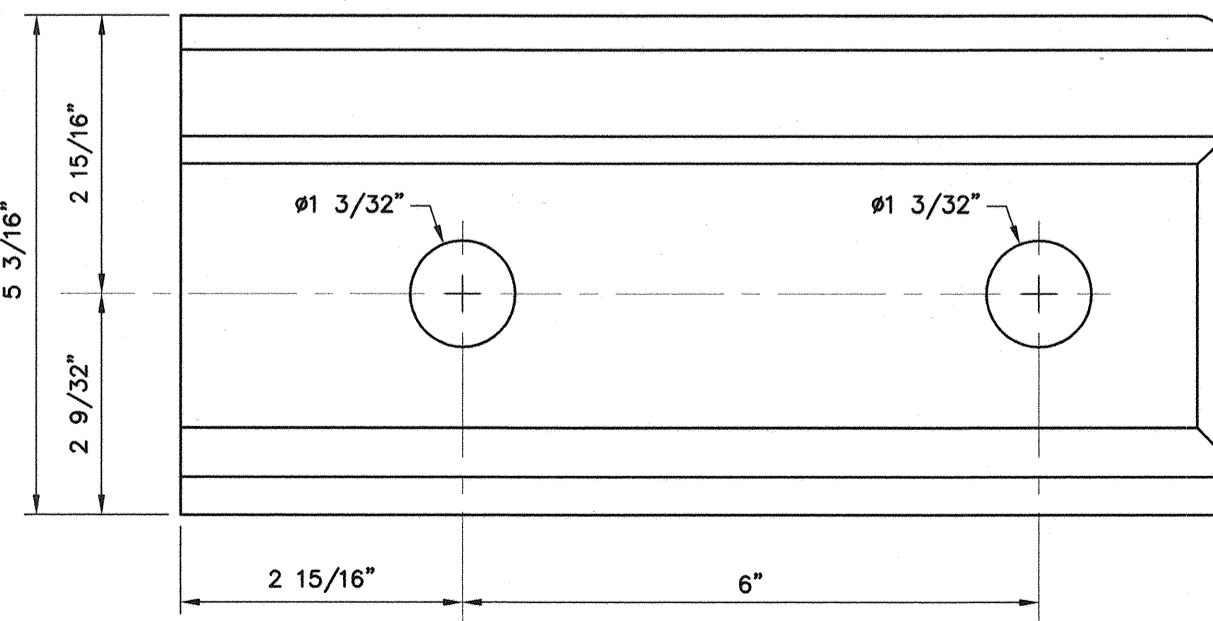
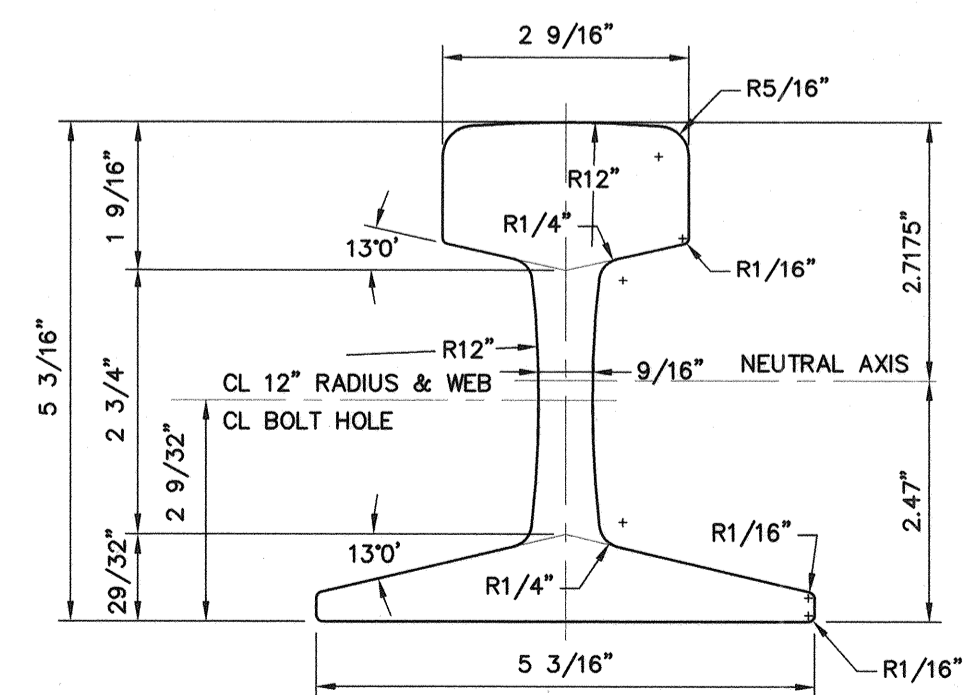
AREA	SQUARE INCHES	PERCENT
HEAD	3.64	37.0
WEB	2.29	23.3
BASE	3.91	39.7
TOTAL	9.84	100.0

MOMENT OF INERTIA	SECTION MODULES, HEAD
SECTION MODULES, HEAD	15.04
SECTION MODULES, BASE	17.78
RATIO, M.I. TO AREA	4.97
RATIO, S.M. HEAD TO AREA	1.53
RATIO, HEIGHT TO BASE	1.09
RATIO, BASE TO HEIGHT	0.92

LBS./YD.	100.4
NET TONS/TRACK MILE	176.00
GROSS TONS/TRACK MILE	157.14
TRACK FEET/NET TON	30.00

SECTION DESIGNATION 100RA/10020

100 POUND RAIL (ARA-A SECTION)
N.T.S.



MATHEMATICAL PROPERTIES

AREA	SQUARE INCHES	PERCENT
HEAD	3.50	41.9
WEB	1.75	21.2
BASE	3.09	36.9
TOTAL	8.34	100.0

MOMENT OF INERTIA	SECTION MODULES, HEAD
SECTION MODULES, HEAD	11.08
SECTION MODULES, BASE	12.17
RATIO, M.I. TO AREA	3.61
RATIO, S.M. HEAD TO AREA	1.34
RATIO, HEIGHT TO BASE	1.00
RATIO, BASE TO HEIGHT	1.00

SECTION DESIGNATION 85 ASCE/8540

85 POUND RAIL (ASCE SECTION)
N.T.S.

J.E. LANCASTER, P.E.
Railroad Engineering
PO Box 377, Gray, ME 04039-9377

STATE OF MAINE
DEPARTMENT OF TRANSPORTATION
PROJECT NUMBER 009215.00
PIN 009215.00



Signature of J.E. Lancaster
SIGNATURE 1729
P.E. NUMBER 1729
DATE 10/8/04

PROJ. MANAGER	PAUL POTTLE	DATE
DESIGN-DETAILED	JEL	10/11/04
CHECKED-REVIEWED	JEL	10/11/04
DESIGN-DETAILED2	JEL	
DESIGN-DETAILED3		
REVISIONS 1		
REVISIONS 2		
REVISIONS 3		
REVISIONS 4		
FIELD CHANGES		

CITY OF PORTLAND
OCEAN GATEWAY PHASE 1
RAILROAD DETAILS - 1

C407