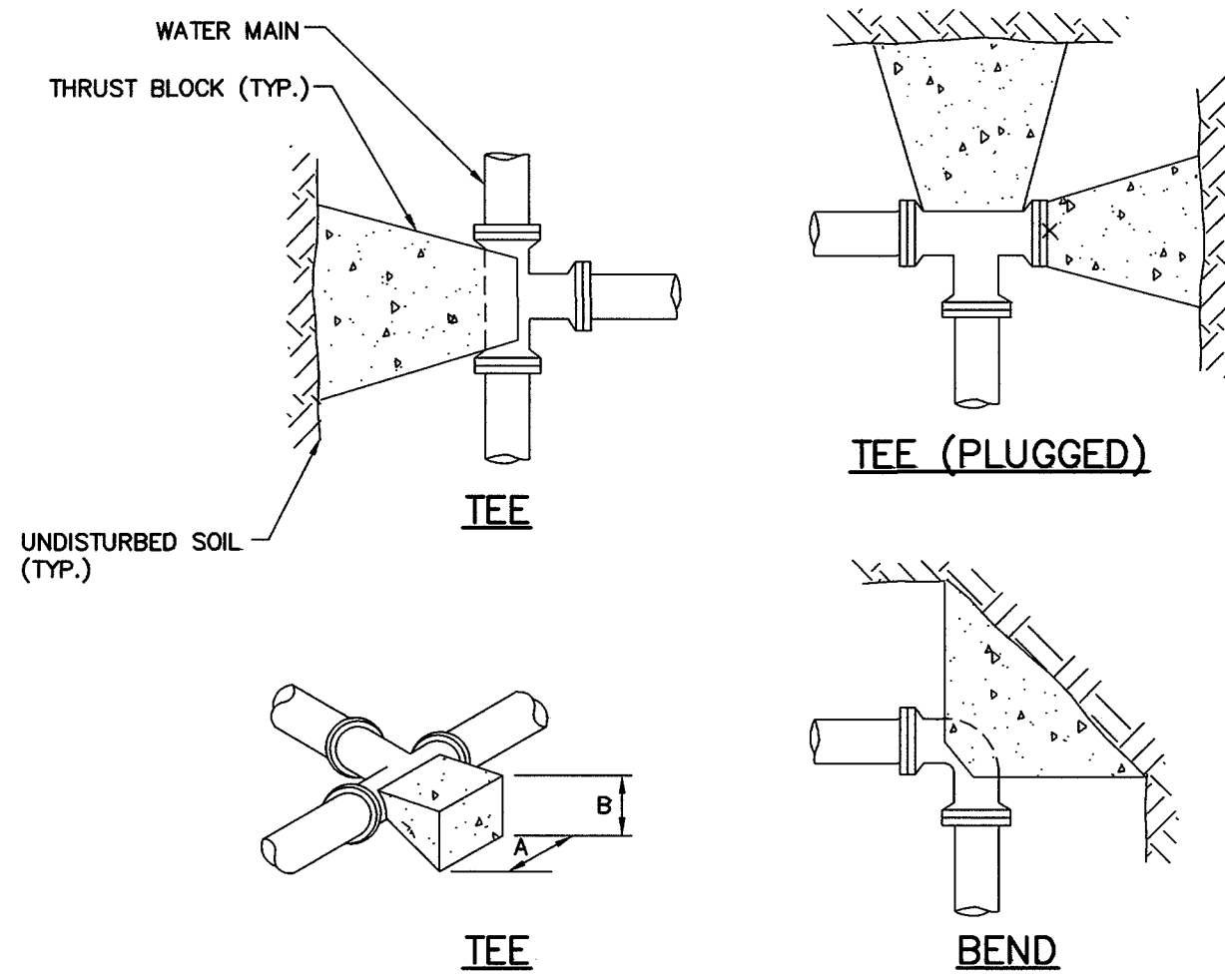


Filename: O:\203438 Ocean Gateway - Phase 1 Engineering\Project Deliverables\2005-01-XX-BID Submittal\CAD Drawings\Civil\20343802-C400A.dwg, Jan 10, 2005 - 12:25pm

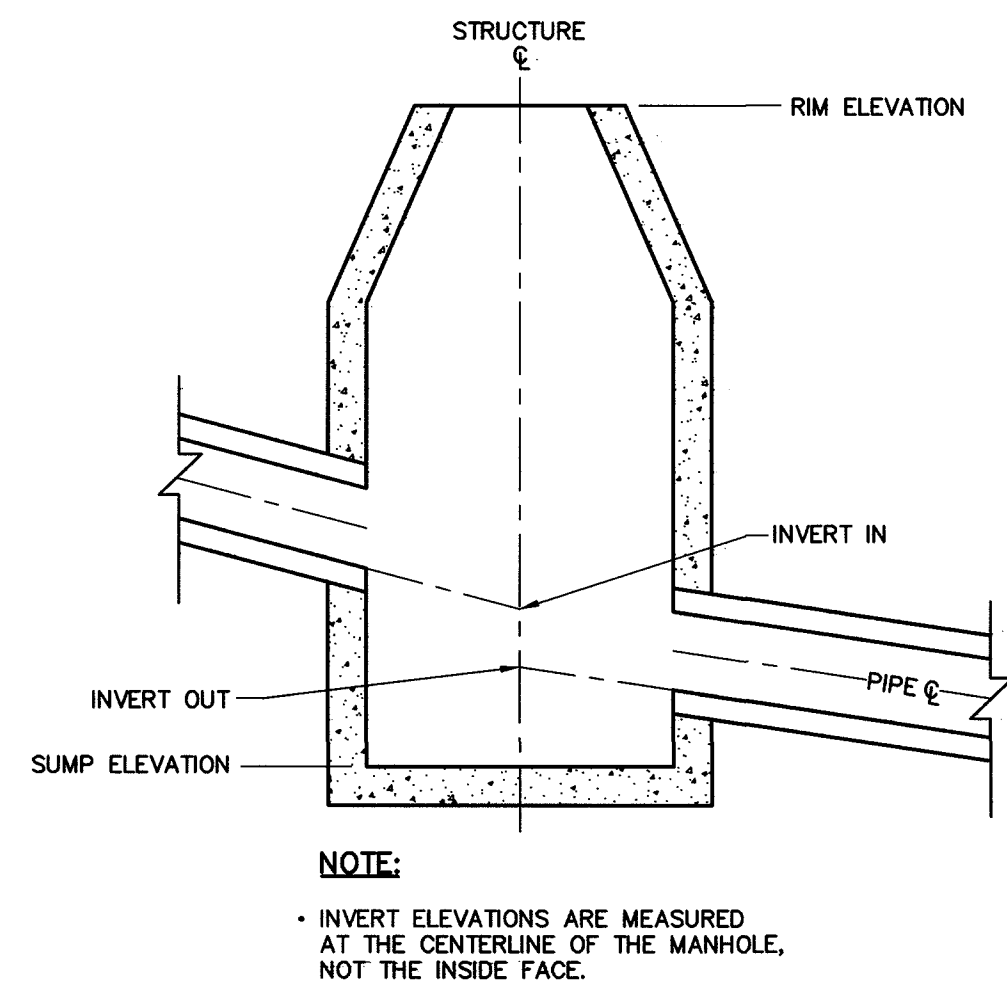


SOIL TYPE	TEES		BENDS	
	A	B	A	B
SOFT CLAY	48"	24"	48"	24"
SAND	24"	24"	24"	24"
GRAVEL	24"	18"	24"	18"

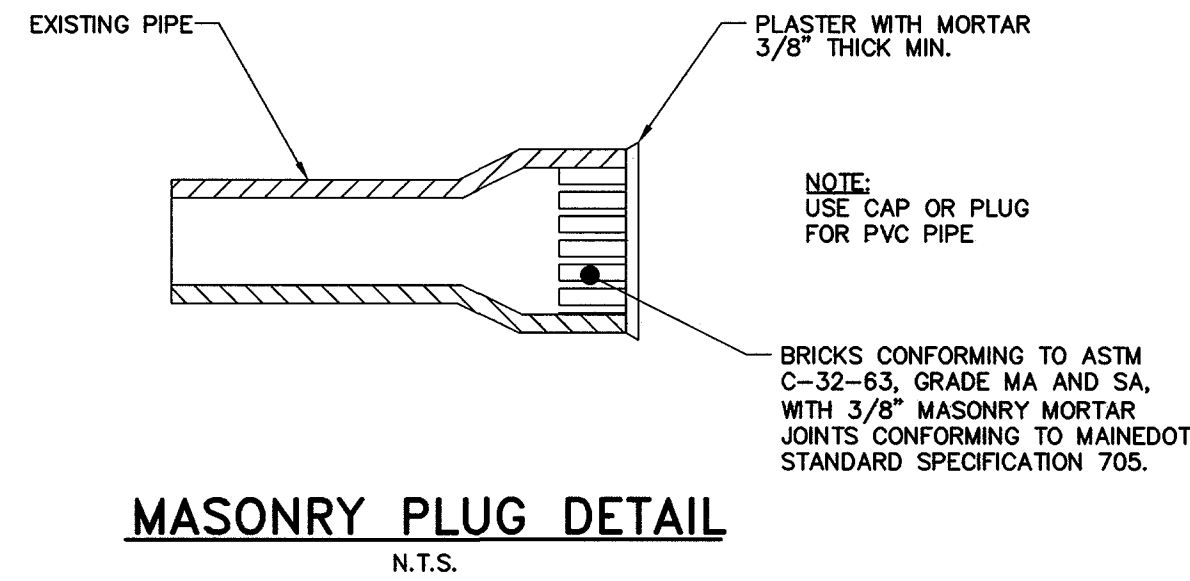
SOIL TYPE	TEES		BENDS	
	A	B	A	B
SOFT CLAY	60"	36"	72"	36"
SAND	36"	30"	48"	30"
GRAVEL	30"	24"	40"	24"

- NOTES:**
- CONCRETE FOR ALL THRUST BLOCKS TO BE MINIMUM 3,000 PSI., 28 DAY STRENGTH, TYPE I CEMENT, 3/4" STONE.
 - WHERE POSSIBLE, CONSTRUCT THRUST BLOCKS AGAINST UNDISTURBED SOIL. WHERE NOT POSSIBLE, PLACE FILL BETWEEN THE THRUST BLOCK AND THE UNDISTURBED SOIL COMPACTED TO 90% STANDARD PROCTOR DENSITY.
 - WRAP FITTINGS WITH POLYETHYLENE PRIOR TO CONSTRUCTING THRUST BLOCKS. NO JOINTS SHALL BE COVERED WITH CONCRETE.
 - THRUST BLOCK DIMENSIONS ARE BASED ON A MAXIMUM WATER MAIN PRESSURE OF 150 PSI.

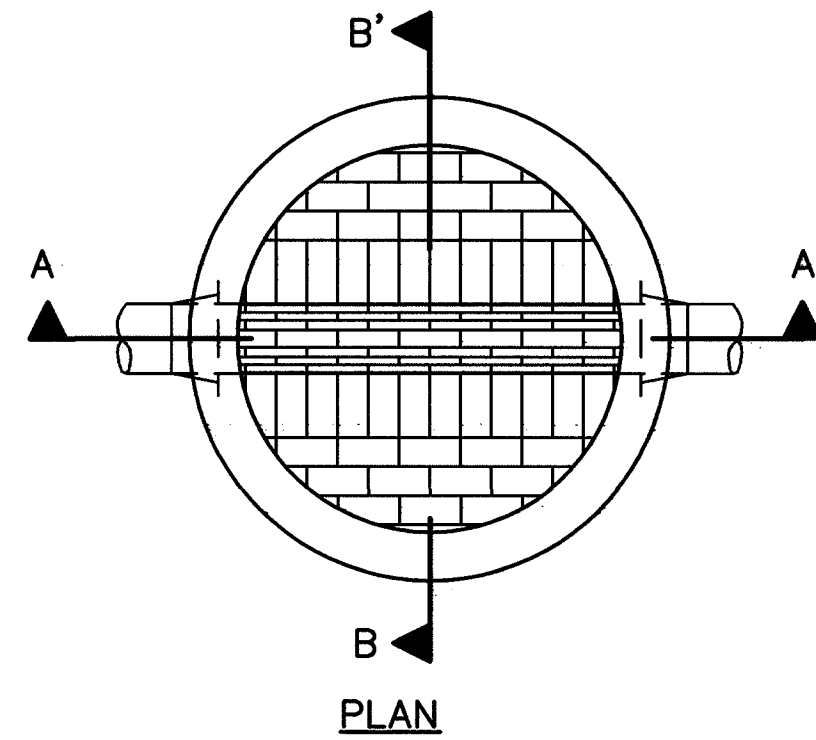
TYPICAL THRUST BLOCK DETAIL
N.T.S.



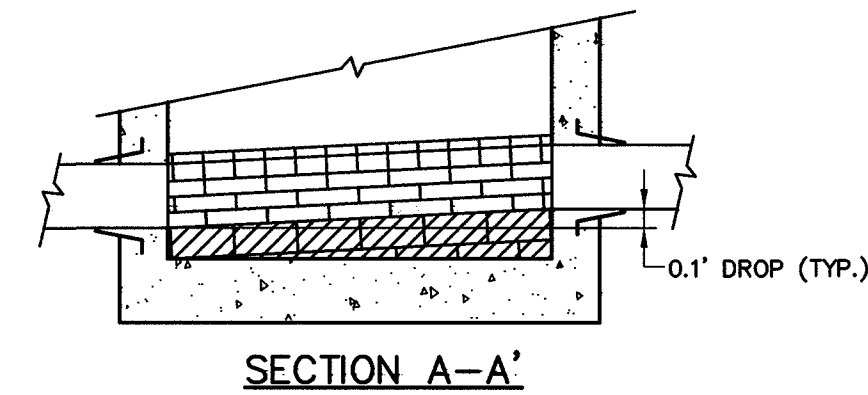
MANHOLE INVERT MEASUREMENT PARAMETERS
N.T.S.



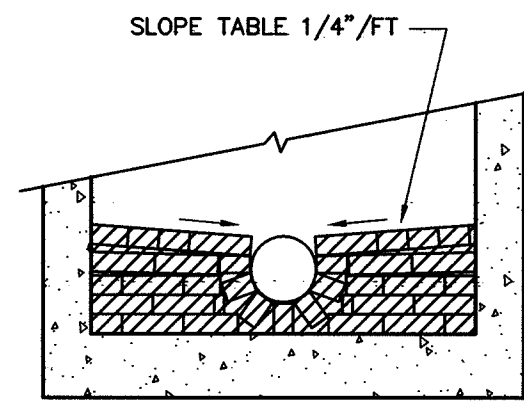
MASONRY PLUG DETAIL
N.T.S.



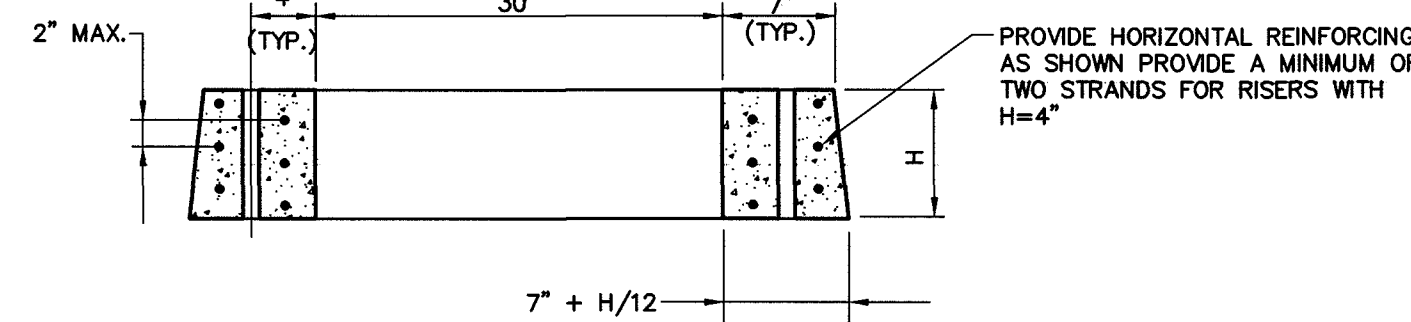
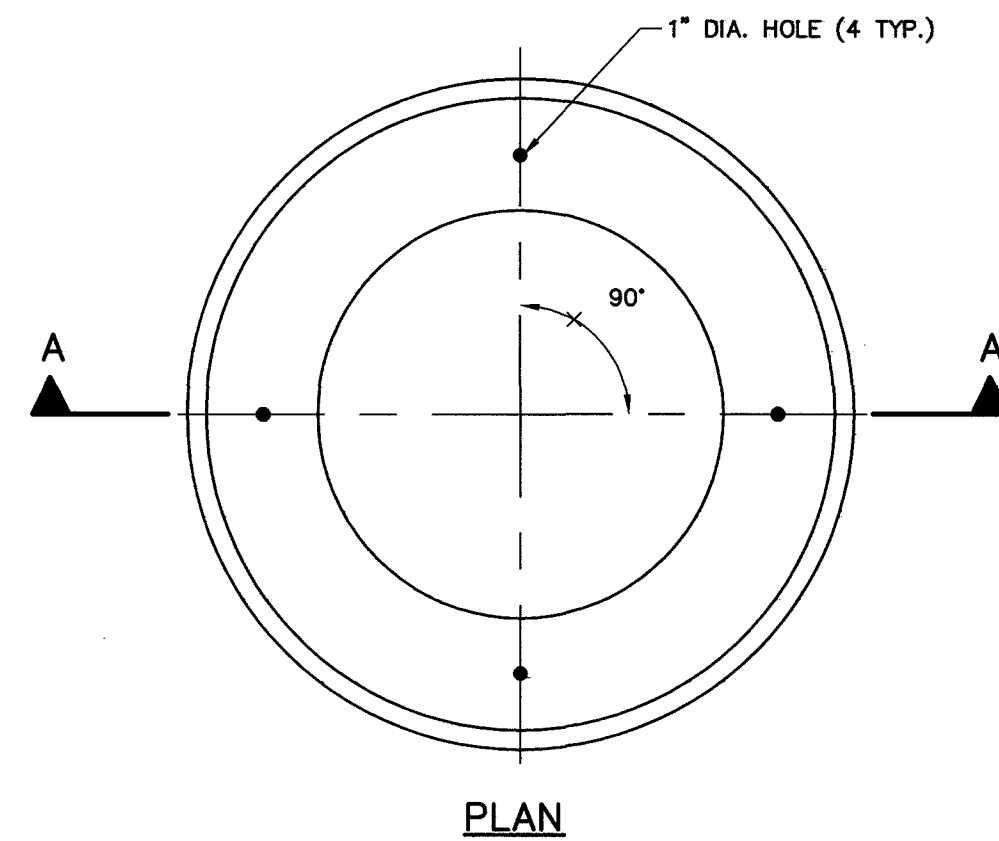
- NOTES:**
- TOOL ALL JOINTS IN CHANNEL AND ON TABLES.
 - FILL UNDER TABLE WITH MORTAR-BEDDED BRICK.
 - SLOPE CHANNEL DOWN FROM INLET TO OUTLET.
 - MAKE CHANGES IN FLOW DIRECTION BY CIRCULAR CHANNEL CONSTRUCTION WITH MAXIMUM RADIUS POSSIBLE.
 - FOR DEAD-END MANHOLES, BUILD CHANNEL AS DIRECTED BY ENGINEER.
 - CONTRACTOR MAY INSTALL CONCRETE (4000 PSI) TABLES AS AN ALTERNATIVE TO BRICK TABLES.



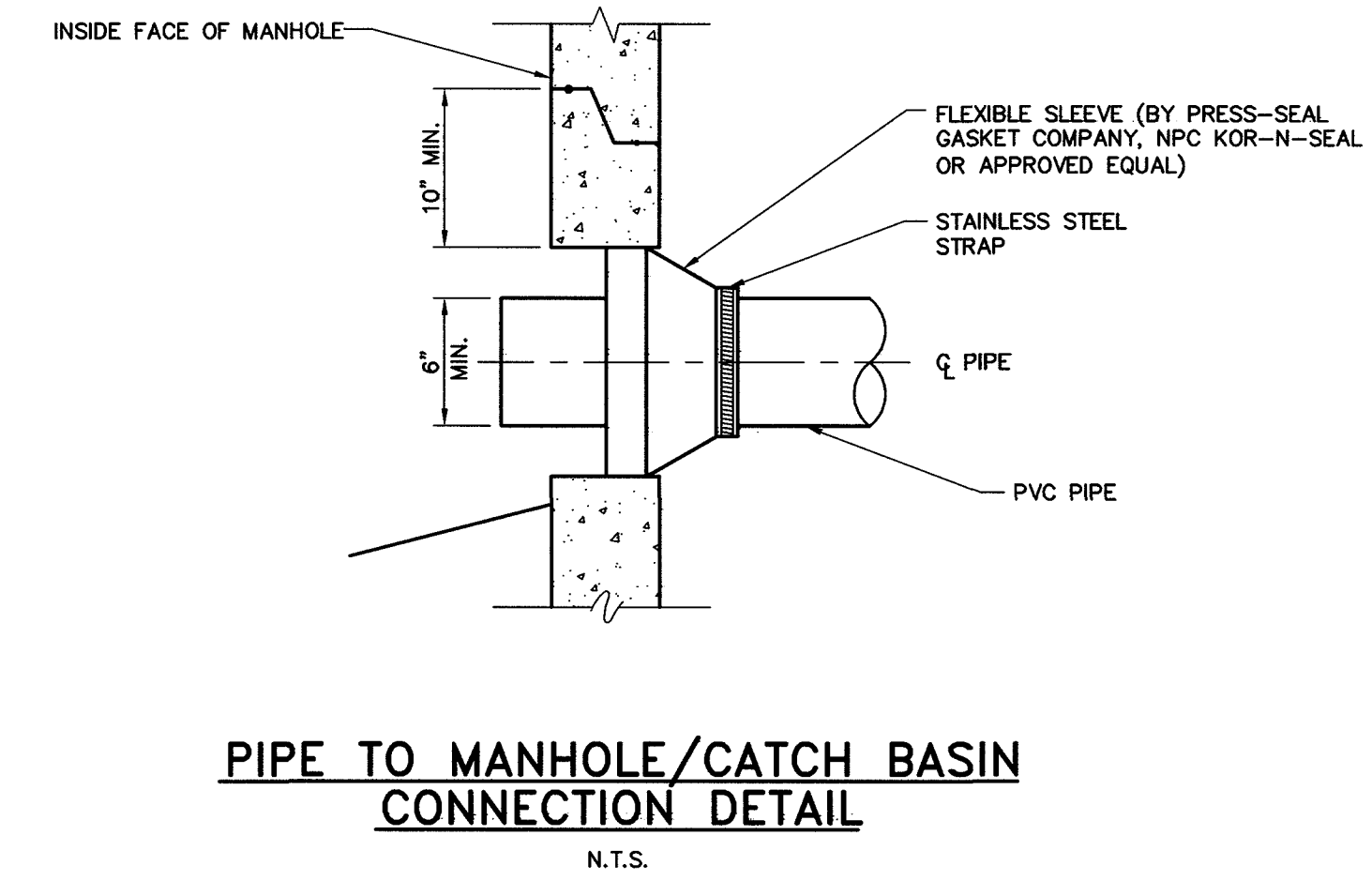
BRICK INVERT
N.T.S.



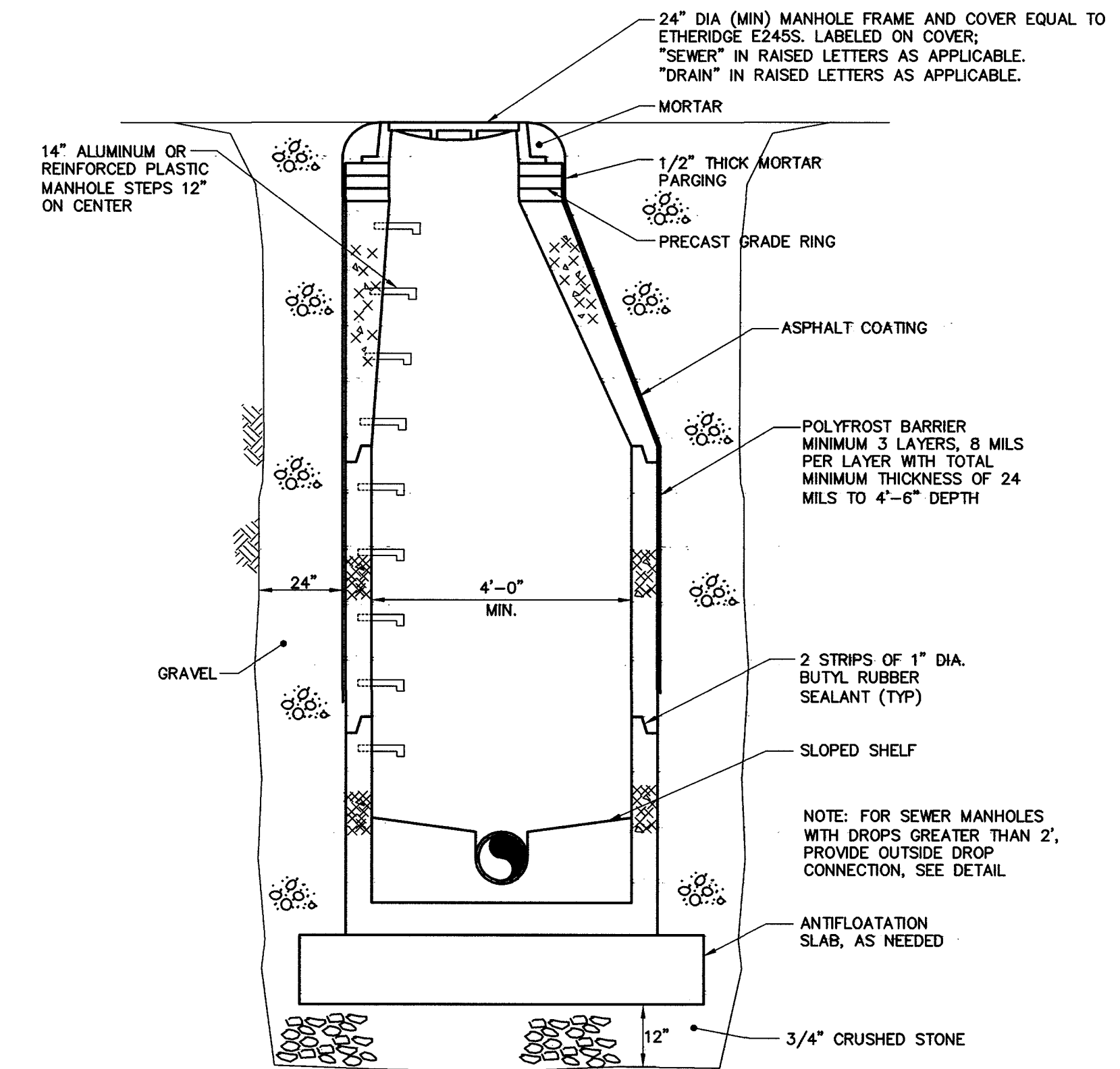
SECTION B-B'



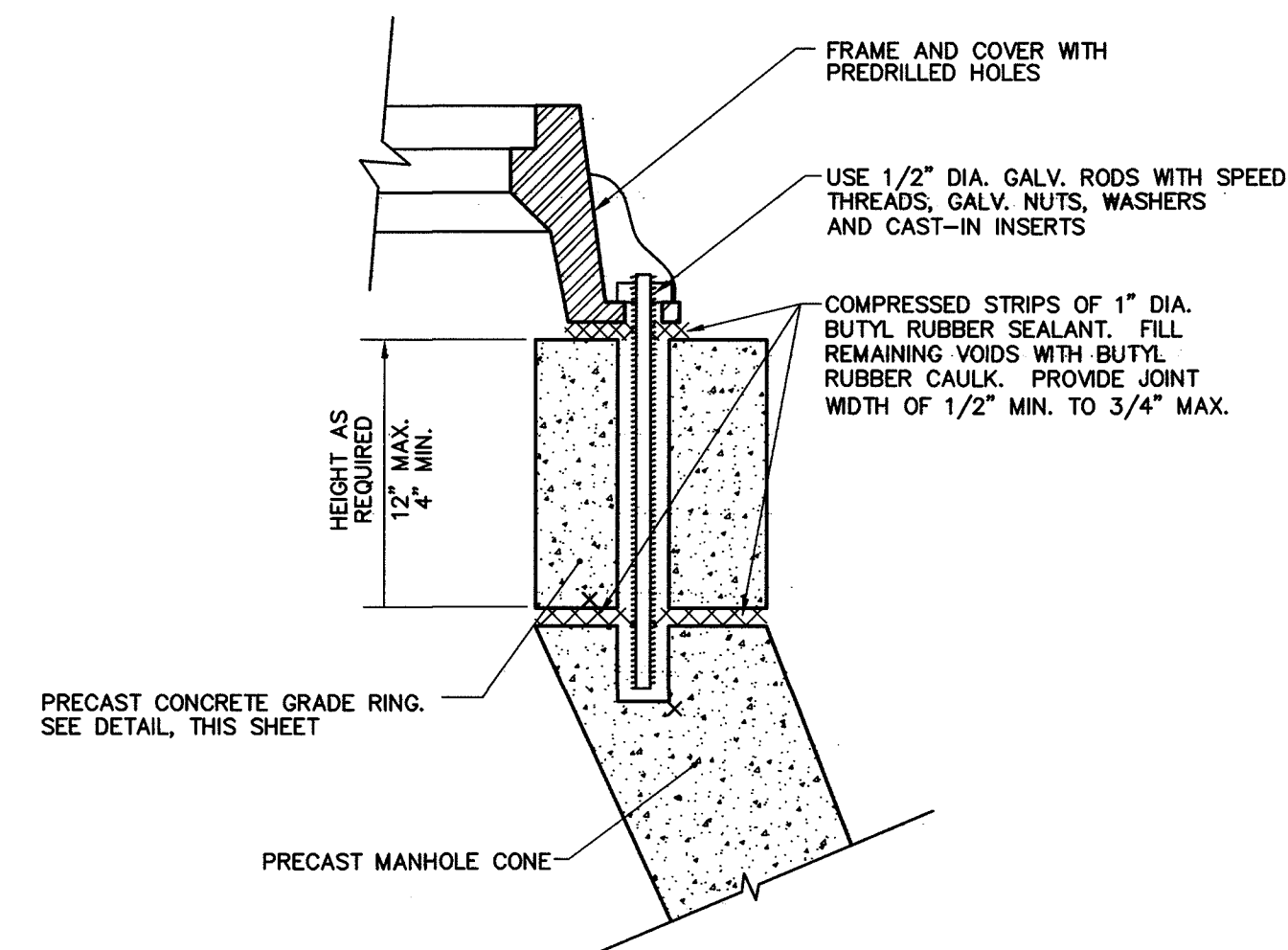
PRECAST CONCRETE GRADE RING
N.T.S.



PIPE TO MANHOLE/CATCH BASIN CONNECTION DETAIL
N.T.S.



PRECAST MANHOLE
N.T.S.



MANHOLE FRAME FASTENING DETAIL
N.T.S.

Professional Engineer Seal for Barry S. Sheff, No. 9708, State of Maine. Includes a signature strip for Barry S. Sheff, dated 1/12/05, and a table for project management and design review.

PROJ. MANAGER	PAUL POTTLE	DATE
DESIGN-DETAILED	JBC	6/19/05
CHECKED-REVIEWED	DAS	6/19/05
DESIGN-DETAILED	BSS	
REVISIONS 1		
REVISIONS 2		
REVISIONS 3		
REVISIONS 4		
FIELD CHANGES		