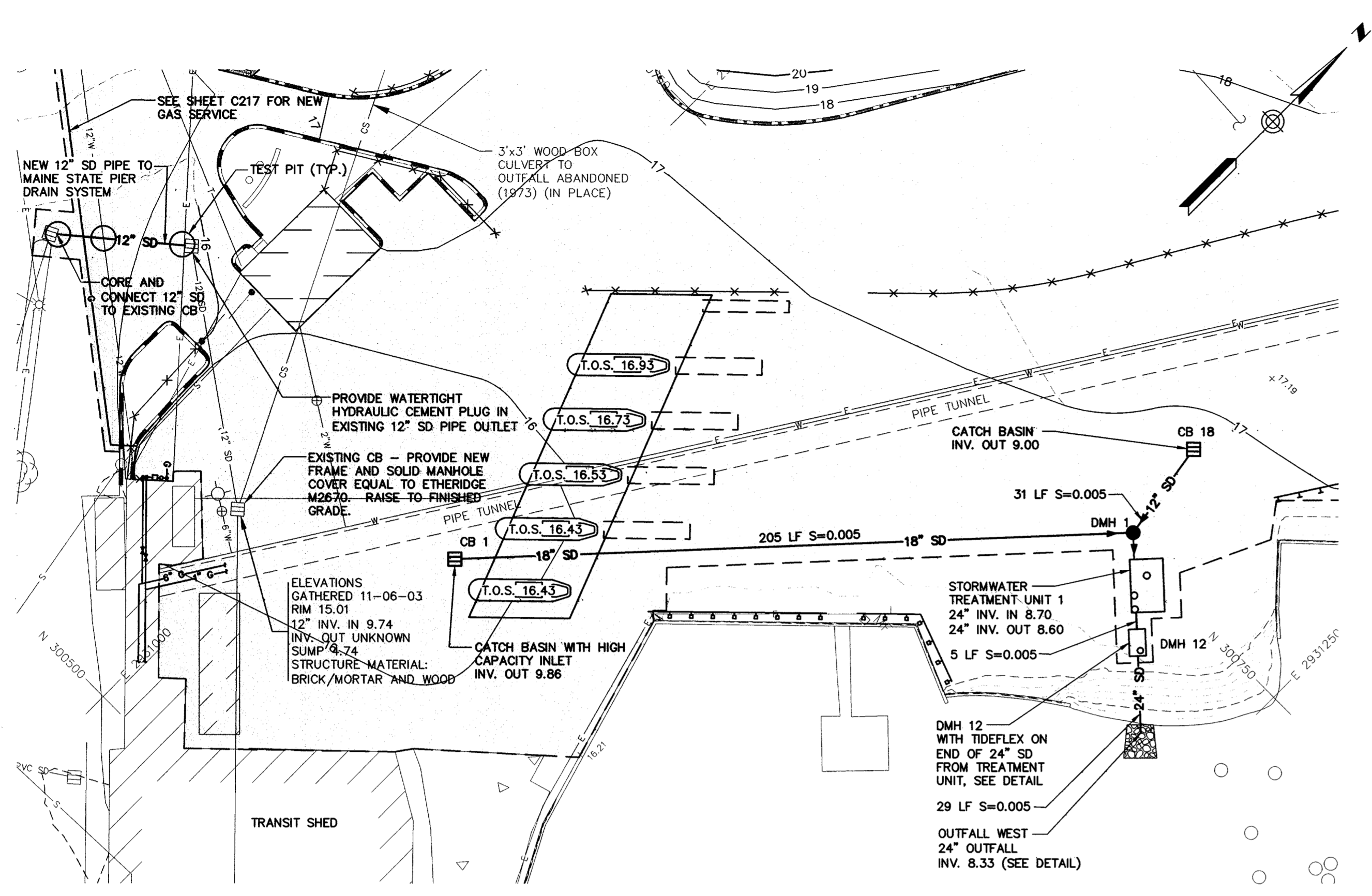
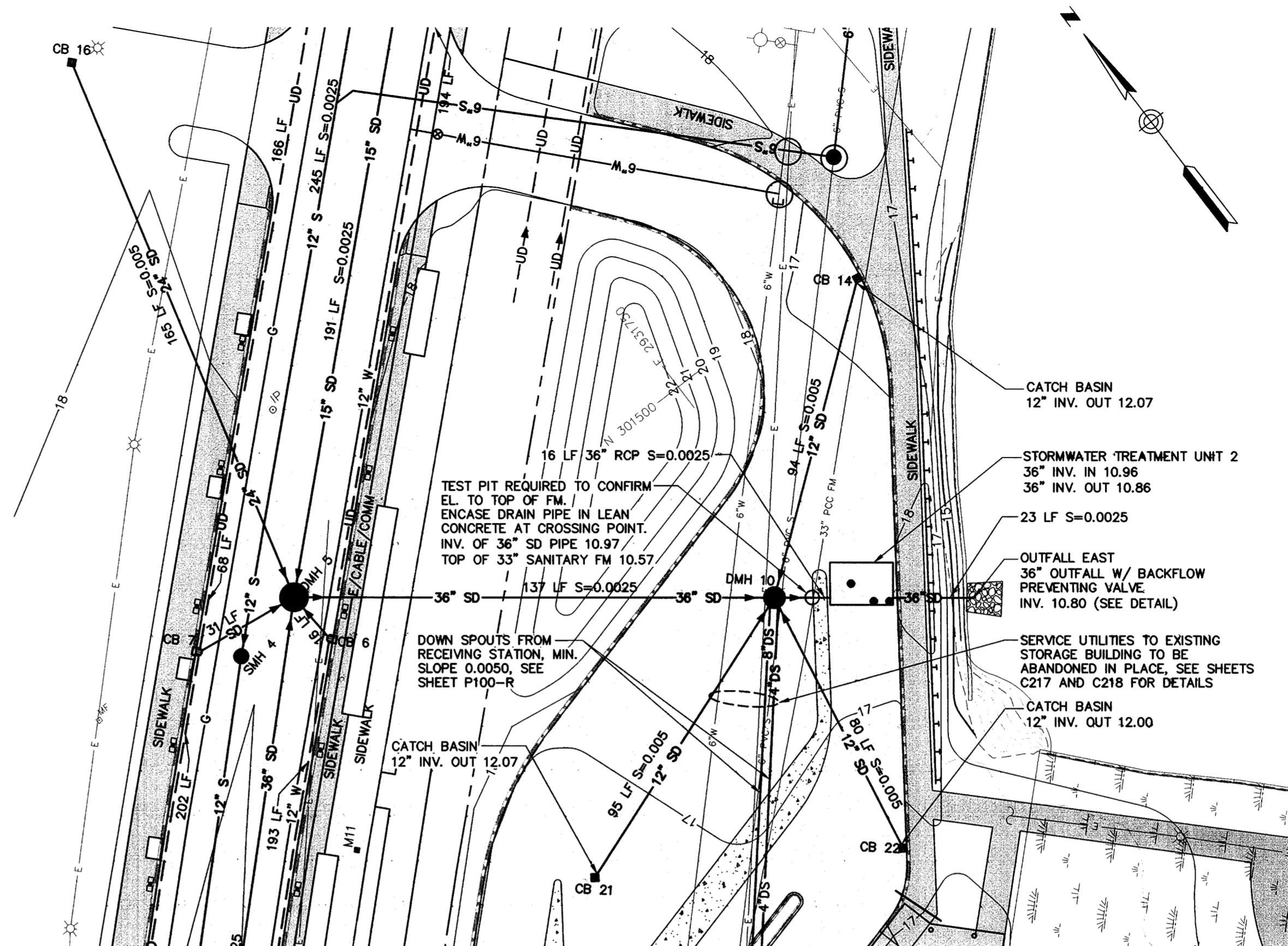


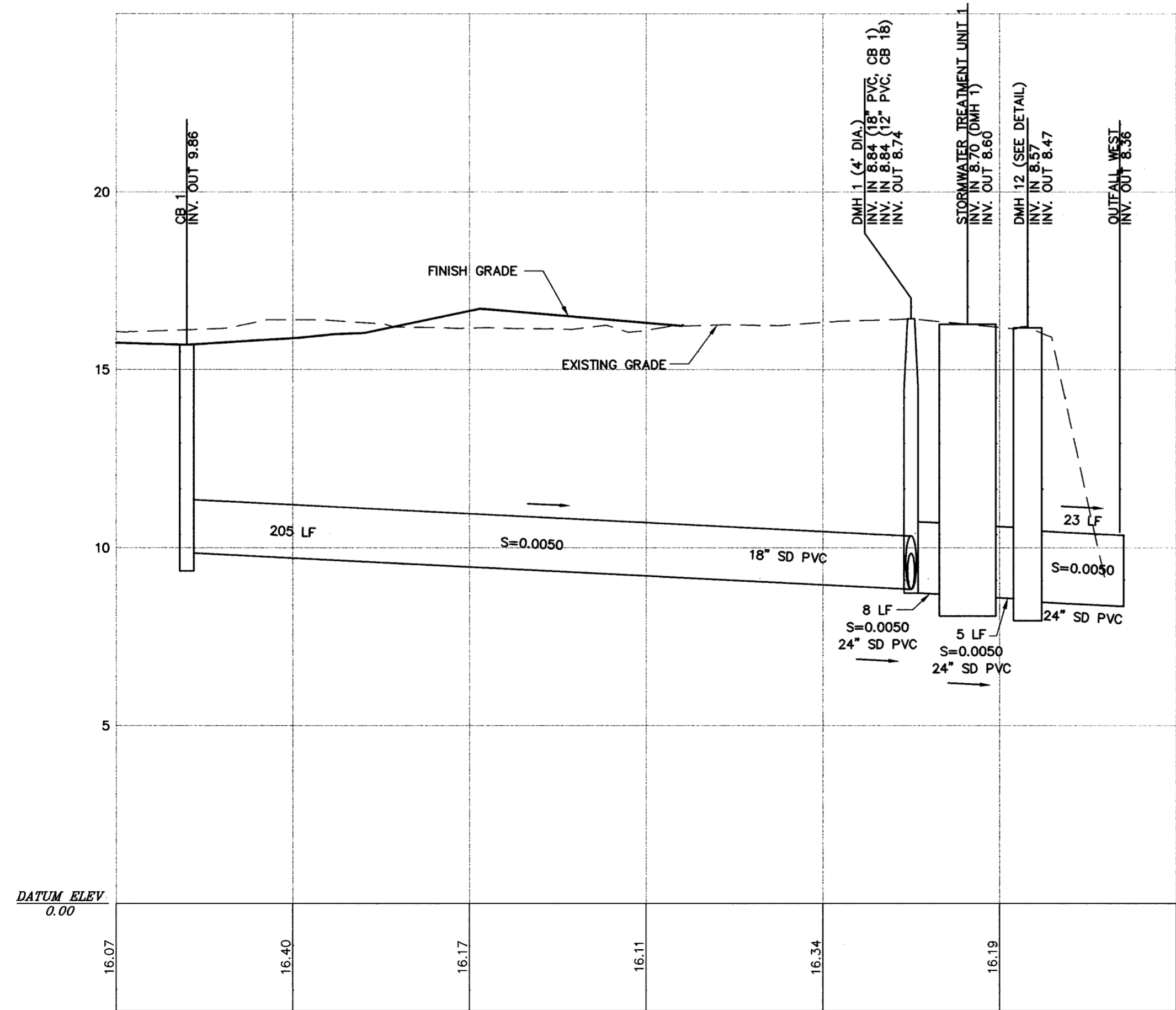
Filename: O:\203438 Ocean Gateway - Phase 1 Engineering\Project Deliverables\2005-01-XX, BID Submittal\CAD Drawings\Civil\20343802-C200F_UTIL.dwg, Jan 14, 2005 - 2:54pm



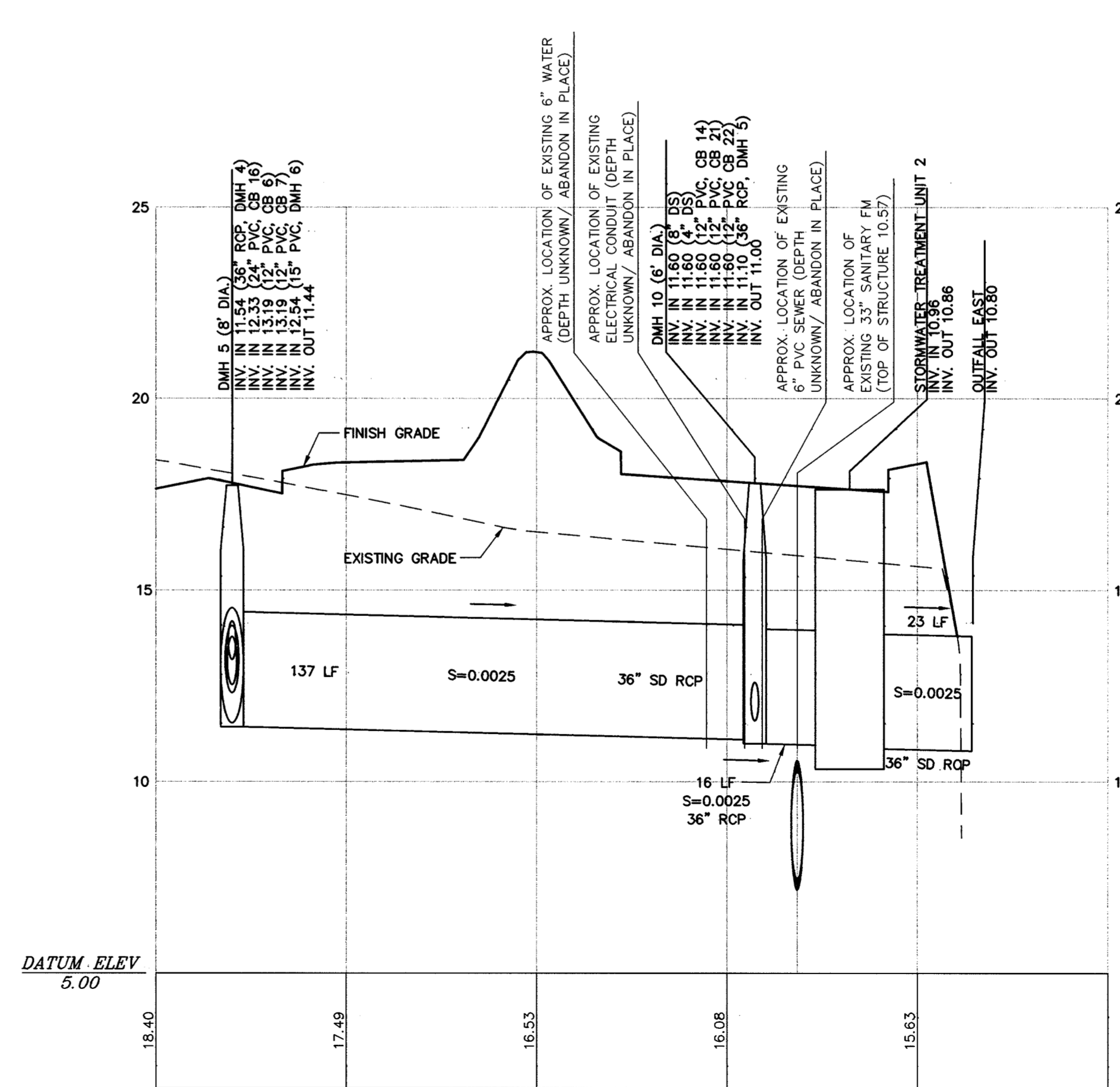
OUTFALL WEST PLAN
SCALE: 1" = 30'



OUTFALL EAST PLAN
SCALE: 1" = 30'



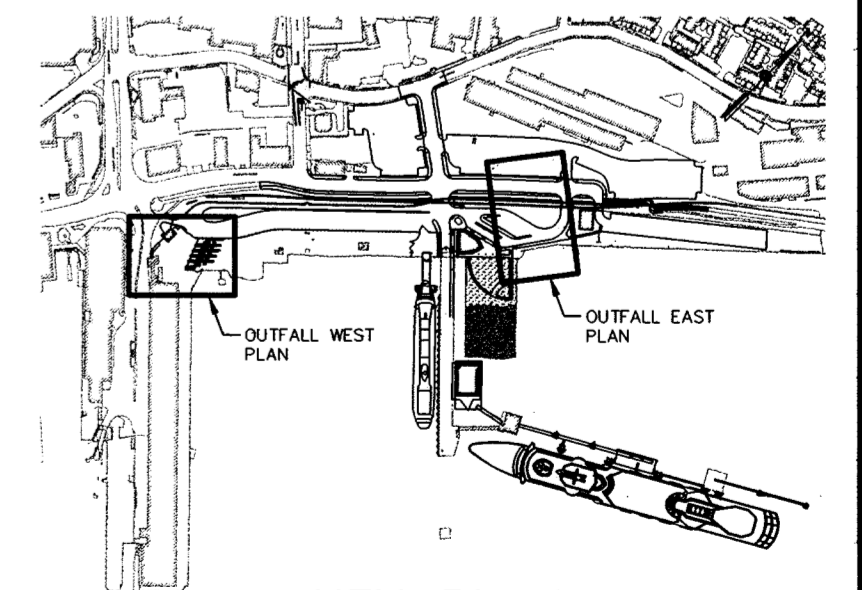
OUTFALL WEST PROFILE
HORIZONTAL SCALE: 1" = 30'
VERTICAL SCALE: 1" = 3'



OUTFALL EAST PROFILE
HORIZONTAL SCALE: 1" = 30'
VERTICAL SCALE: 1" = 3'

STRUCTURE DESIGNATION	RIM	NORTHING	EASTING
DMH 1	16.44	300754.86	2931185.14
DMH 10	17.80	301435.80	2931735.22
DMH 12	16.20	300732.46	2931209.36

STRUCTURE DESIGNATION	RIM	NORTHING	EASTING
CB 1	15.70	300604.36	2931045.96
CB 14	16.66	301493.10	2931809.39
CB 18	16.84	300785.48	2931180.31
CB 21	16.09	301404.19	2931646.04
CB 22	16.17	301357.05	2931720.90



KEY PLAN
SCALE: 1" = 600'



CHECK GRAPHIC SCALE BEFORE USING

MLLW = 0.00 FT = -4.57 FT NGVD 1929 (CITY DATUM)

WOODARD & CURRAN
Engineering · Science · Operations
41 Hutchins Drive · Portland, Maine 04102

STATE OF MAINE
DEPARTMENT OF TRANSPORTATION



DATE: 01/14/05
BY: JBC
DESIGN: DAS
CHECKED: DAS
DESIGNED: DAS
DESIGNED: DAS
REVISIONS: 1
REVISIONS: 2
REVISIONS: 3
REVISIONS: 4
FIELD CHANGES

PROJ. MANAGER: PAUL POTTE
DATE: 01/14/05
BY: JBC
DESIGN: DAS
CHECKED: DAS
DESIGNED: DAS
DESIGNED: DAS
REVISIONS: 1
REVISIONS: 2
REVISIONS: 3
REVISIONS: 4
FIELD CHANGES

CITY OF PORTLAND
OCEAN GATEWAY PHASE 1
OUTFALL PLAN AND PROFILES

C216
25 OF 288

PROJECT NUMBER 009215.00
PIN 009215.00