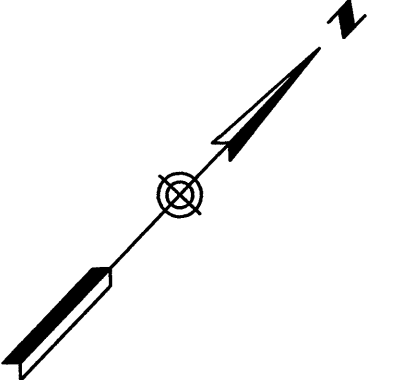
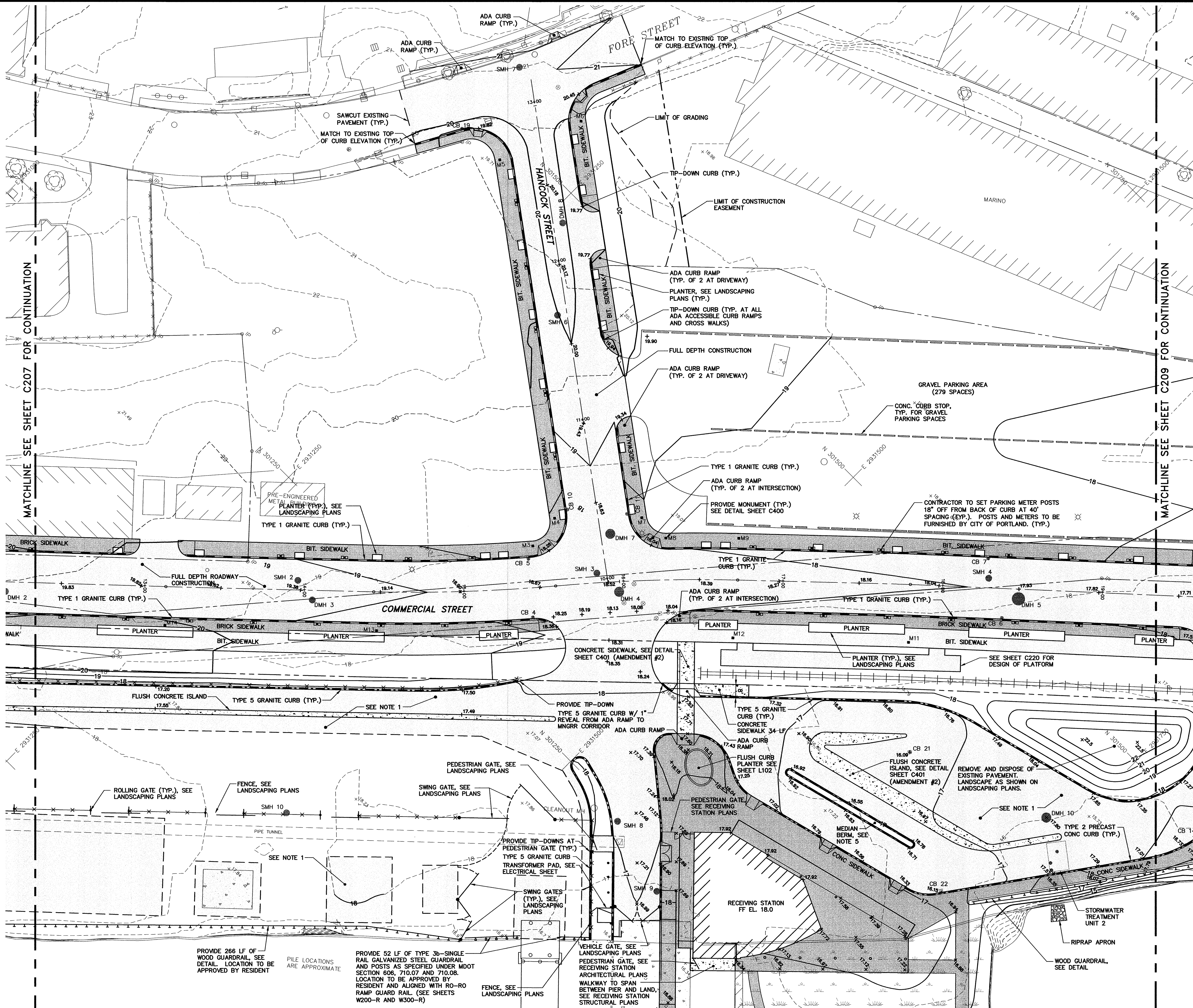
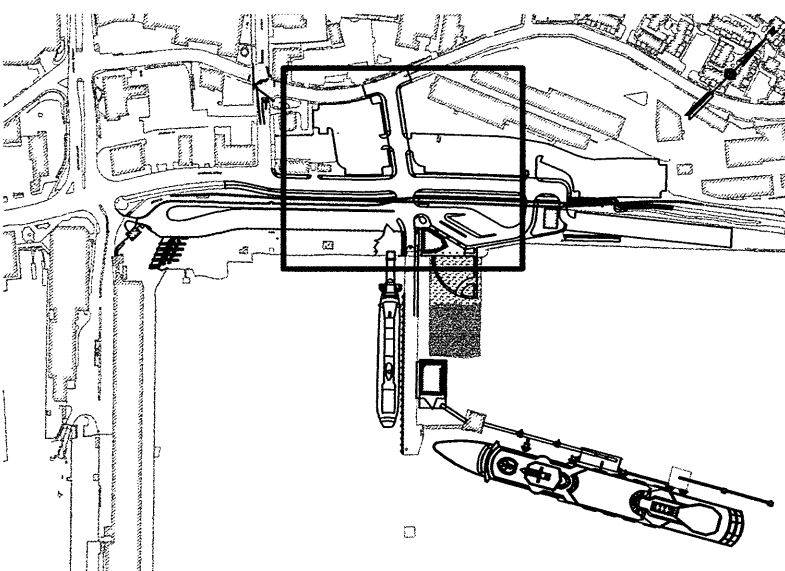


Filename: \\Portland\Projects\203438 Ocean Gateway - Phase 1 Engineering\Project Deliverables\VAAP Drawings\VAAP Drawings\2005-12-23, VAAP 20.1\Civil\20343802-C208.dwg, Dec 23, 2005 - 2:30pm



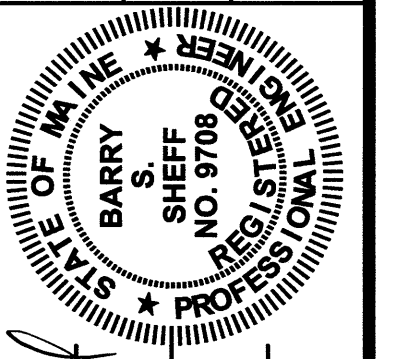
- NOTES:**
- WITHIN QUEUE AREA, QUEUE ACCESS LANE, AND AT RECEIVING STATION DEMOLISH PAVEMENT AND PROVIDE TYPE A AGGREGATE BASE AND REFER TO PAVEMENT SECTION, SHEET C400, FOR PAVEMENT THICKNESS.
 - FOR RIM ELEVATIONS OF CATCH BASINS, SEWER MANHOLES AND DRAIN MANHOLES, SEE SCHEDULES ON UTILITY PLANS.
 - REFER TO LANDSCAPING PLANS FOR NON-PAVED SURFACES.
 - FINISH SURFACE OF GRAVEL PARKING AREAS SHALL BE EQUIVALENT TO, OR BETTER THAN THE EXISTING FINISH SURFACE CONDITIONS. (AMENDMENT #1)
 - MEDIAN BERM CONSTRUCTED OF TYPE 5 GRANITE CURB, CENTER MATERIAL OF COMPACTED AGGREGATE BASE, TYPE A WITH A FINISH SURFACE OF 2" HAND PLACED HMA 12.5 MM MIX TO TOP OF CURB; LAYOUT IN ACCORDANCE WITH SHEET C205. (AMENDMENT #2)



MLLW = 0.00 FT = -4.57 FT NGVD 1929

WOODARD & CURRAN
Engineering • Science • Operations
41 Hutchins Drive • Portland, Maine 04102

STATE OF MAINE
DEPARTMENT OF TRANSPORTATION
PROJECT NUMBER 009215.00
PIN
009215.00



PROJ. MANAGER	PAUL POTTLE	BY	DATE
DESIGN-DETAILED	JBC	07/14/05	
CHECKED-REVIEWED	DAS	07/14/05	
DESIGN-DETAILED	BSS	07/14/05	
REVISIONS 1	MODIFIED PER VAAP201	10/17/05	
REVISIONS 2	MODIFIED PER VAAP201	12/23/05	
REVISIONS 3			
REVISIONS 4			
FIELD CHANGES			

CITY OF PORTLAND
OCEAN GATEWAY PHASE 1
GRADING PLAN - 2

C208