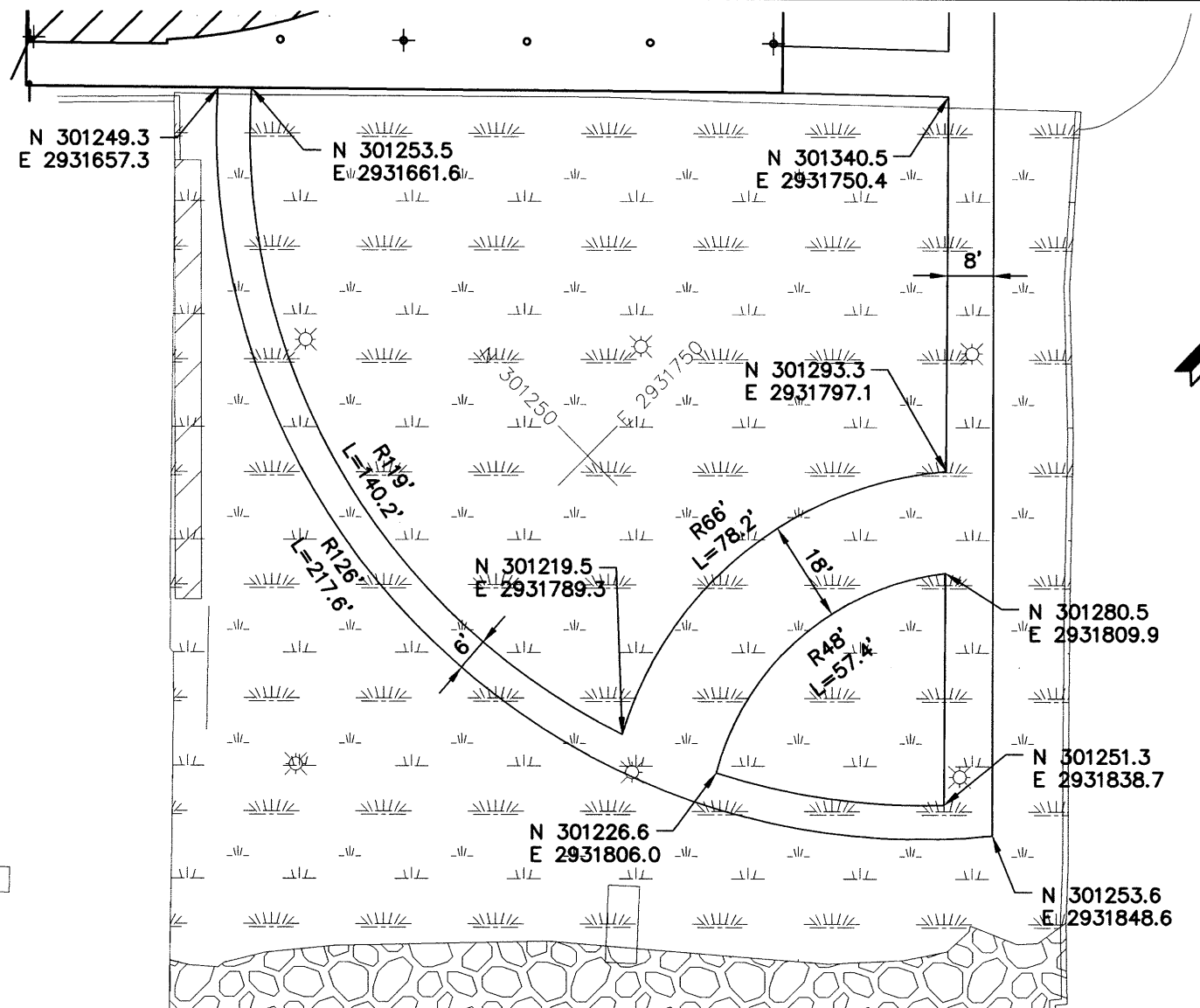


**SHOREZONE CONTAINMENT AREA INSET**



**EDGE OF PAVEMENT CURVE TABLE**

CURVE	RADIUS	LENGTH	START NORTHING & EASTING	END NORTHING & EASTING
C15	20.00	20.94	N 301629.34 E 2931694.34	N 301610.26 E 2931688.33
C19	30.00	46.65	N 301686.75 E 2931815.42	N 301688.23 E 2931773.36
C20	20.00	20.94	N 301653.52 E 2931735.50	N 301649.18 E 2931715.97
C21	30.00	44.99	N 301591.31 E 2931765.12	N 301632.07 E 2931768.34
C22	30.00	46.65	N 301644.41 E 2931781.79	N 301642.92 E 2931823.86
C24	25.00	41.05	N 301577.43 E 2931708.75	N 301574.54 E 2931745.23
C55	50.00	99.36	N 301545.60 E 2931768.20	N 301466.13 E 2931741.63
C57	75.00	96.77	N 301553.20 E 2931795.37	N 301463.03 E 2931797.69

**EDGE OF PAVEMENT LINE TABLE**

LINE	LENGTH	BEARING	START NORTHING & EASTING	END NORTHING & EASTING
L17	54.48	N43°25'58"W	N 301647.18 E 2931852.88	N 301686.74 E 2931815.42
L18	51.37	S47°28'43"W	N 301688.23 E 2931773.36	N 301653.52 E 2931735.50
L19	18.26	N47°28'43"E	N 301632.07 E 2931768.34	N 301644.41 E 2931781.79
L20	16.48	S43°25'52"E	N 301642.92 E 2931823.86	N 301630.96 E 2931835.18
L55	36.95	S38°26'24"E	N 301574.54 E 2931745.23	N 301545.60 E 2931768.20
L58	48.66	S38°26'24"E	N 301591.31 E 2931765.12	N 301553.20 E 2931795.37

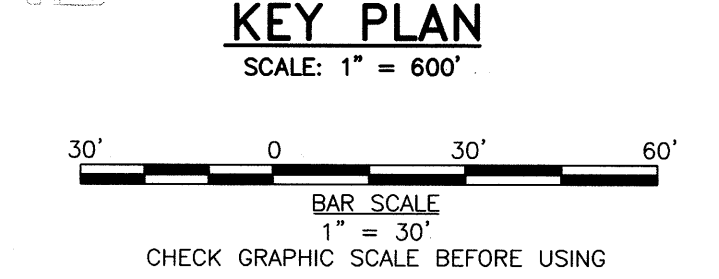
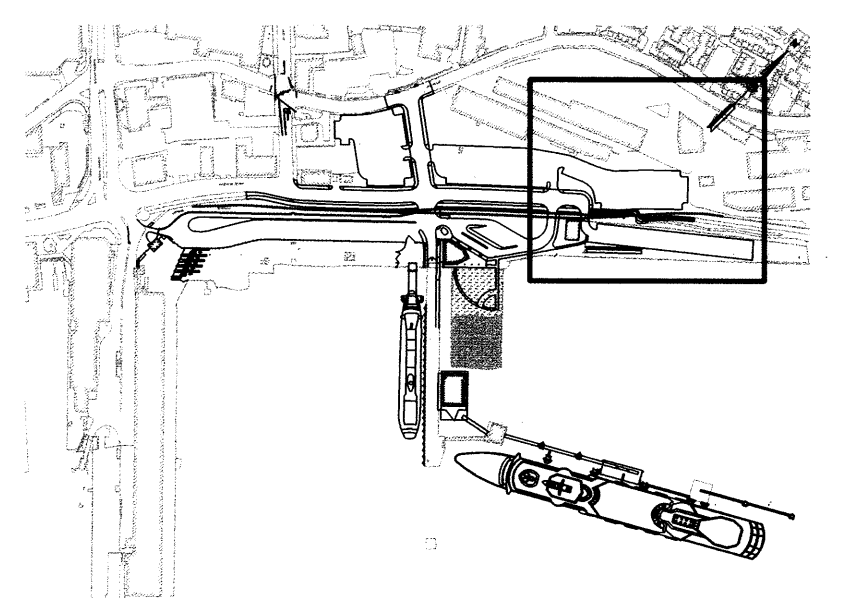
**GRANITE MONUMENT SCHEDULE**

MONUMENT NUMBER	NORTHING	EASTING
M10	301672.88	2931837.99

**COMMERCIAL STREET & HANCOCK STREET ALIGNMENT LINE TABLE**

LINE	LENGTH	BEARING	START NORTHING & EASTING	END NORTHING & EASTING
L5	767.91	N47°28'43"E	N 301478.20 E 2931572.43	N 301997.20 E 2932138.40

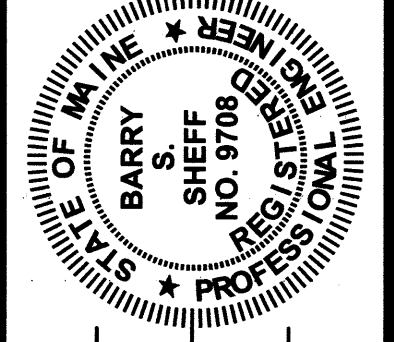
- NOTES:**
1. PLACEMENT AND EXACT LOCATIONS OF SIGNS IN ROADWAY R.O.W. TO BE COORDINATED WITH CITY D.P.W. OFFICE.
  2. FOR INFORMATION ON HORIZONTAL DATUM, VERTICAL DATUM AND CONTROL POINTS, SEE SHEET C001 AND C100.
  3. SEE SHEET C220 FOR NARROW GAUGE RAILROAD LAYOUT PLANS.



MLLW = 0.00 FT = -4.57 FT NGVD 1929 (CITY DATUM)

**WOODARD & CURRAN**  
Engineering - Science - Operations  
41 Hutchins Drive - Portland, Maine 04102

STATE OF MAINE  
DEPARTMENT OF TRANSPORTATION  
PROJECT NUMBER 009215.00  
PIN 009215.00



Signature: *Barry S. Barry*  
DATE: 1/14/05

PROJ. MANAGER	DATE	BY	DESIGN-DETAILED	CHECKED-REVIEWED	DESIGN-2-DETAILED	DESIGN-3-DETAILED	REVISIONS 1	REVISIONS 2	REVISIONS 3	REVISIONS 4	FIELD CHANGES
PAUL FOTTE	01/14/05	JBC	DAS	BSS							

CITY OF PORTLAND  
OCEAN GATEWAY PHASE 1  
LAYOUT PLAN - 3

C206