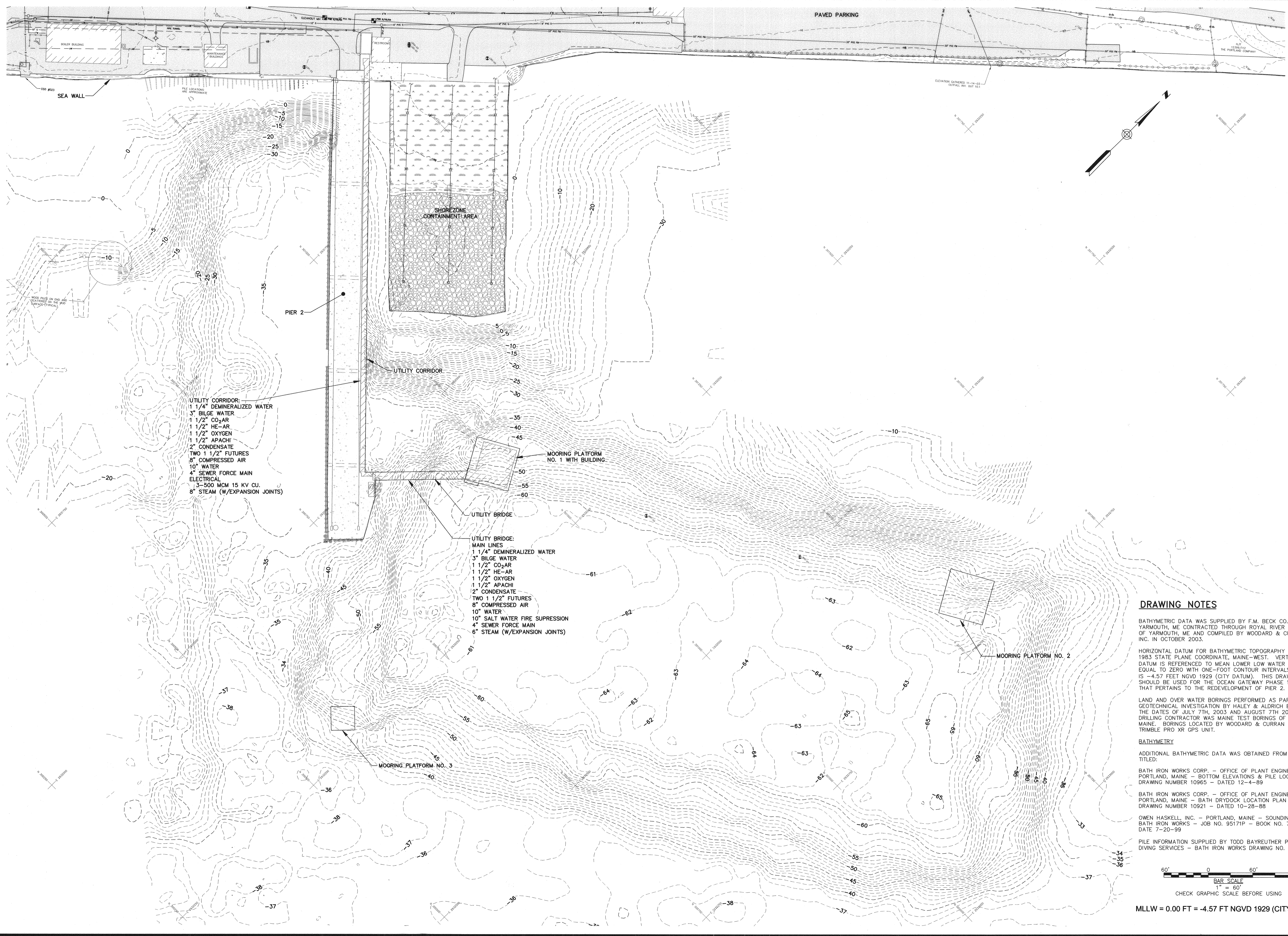


Filename: O:\203438 Ocean Gateway - Phase 1 Engineering\Project Deliverables\2004-10-27 Issued for BID\CAD Drawings\Civil\20343802-C101.dwg, Oct 06, 2004 - 6:16pm



UTILITY CORRIDOR:
 1 1/4" DEMINERALIZED WATER
 3" BILGE WATER
 1 1/2" CO₂ AR
 1 1/2" HE-AR
 1 1/2" OXYGEN
 1 1/2" APACHI
 2" CONDENSATE
 TWO 1 1/2" FUTURES
 8" COMPRESSED AIR
 10" WATER
 4" SEWER FORCE MAIN
 ELECTRICAL
 5-500 MCM 15 KV CU.
 8" STEAM (W/EXPANSION JOINTS)

UTILITY BRIDGE:
 MAIN LINES
 1 1/4" DEMINERALIZED WATER
 3" BILGE WATER
 1 1/2" CO₂ AR
 1 1/2" HE-AR
 1 1/2" OXYGEN
 1 1/2" APACHI
 2" CONDENSATE
 TWO 1 1/2" FUTURES
 8" COMPRESSED AIR
 10" WATER
 10" SALT WATER FIRE SUPPRESSION
 4" SEWER FORCE MAIN
 6" STEAM (W/EXPANSION JOINTS)

DRAWING NOTES

BATHYMETRIC DATA WAS SUPPLIED BY F.M. BECK CO. OF YARMOUTH, ME CONTRACTED THROUGH ROYAL RIVER SURVEY OF YARMOUTH, ME AND COMPILED BY WOODARD & CURRAN INC. IN OCTOBER 2003.

HORIZONTAL DATUM FOR BATHYMETRIC TOPOGRAPHY IS NAD 1983 STATE PLANE COORDINATE, MAINE-WEST. VERTICAL DATUM IS REFERENCED TO MEAN LOWER LOW WATER (MLLW) EQUAL TO ZERO WITH ONE-FOOT CONTOUR INTERVALS. MLLW IS -4.57 FEET NGVD 1929 (CITY DATUM). THIS DRAWING SHOULD BE USED FOR THE OCEAN GATEWAY PHASE 1 PROJECT THAT PERTAINS TO THE REDEVELOPMENT OF PIER 2.

LAND AND OVER WATER BORINGS PERFORMED AS PART OF GEOTECHNICAL INVESTIGATION BY HALEY & ALDRICH BETWEEN THE DATES OF JULY 7TH, 2003 AND AUGUST 7TH 2003. DRILLING CONTRACTOR WAS MAINE TEST BORINGS OF BREWER MAINE. BORINGS LOCATED BY WOODARD & CURRAN INC. USING TRIMBLE PRO XR GPS UNIT.

BATHYMETRY
 ADDITIONAL BATHYMETRIC DATA WAS OBTAINED FROM DRAWINGS TITLED:

BATH IRON WORKS CORP. - OFFICE OF PLANT ENGINEER - PORTLAND, MAINE - BOTTOM ELEVATIONS & PILE LOCATIONS - DRAWING NUMBER 10965 - DATED 12-4-89

BATH IRON WORKS CORP. - OFFICE OF PLANT ENGINEER - PORTLAND, MAINE - BATH DRYDOCK LOCATION PLAN - DRAWING NUMBER 10921 - DATED 10-28-88

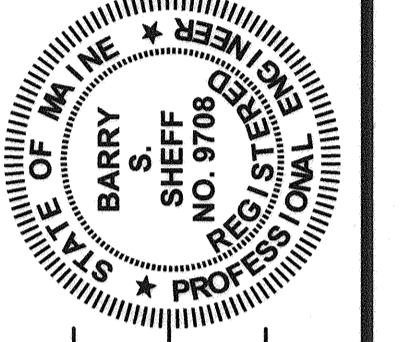
OWEN HASKELL, INC. - PORTLAND, MAINE - SOUNDINGS AT BATH IRON WORKS - JOB NO. 95171P - BOOK NO. 752 - DATE 7-20-99

PILE INFORMATION SUPPLIED BY TODD BAYREUTHER PORTLAND DIVING SERVICES - BATH IRON WORKS DRAWING NO. 10965

1" = 60'
 BAR SCALE
 CHECK GRAPHIC SCALE BEFORE USING
 MLLW = 0.00 FT = -4.57 FT NGVD 1929 (CITY DATUM)

WOODARD & CURRAN
 Engineering · Science · Operations
 41 Hutchins Drive · Portland, Maine 04102

STATE OF MAINE
 DEPARTMENT OF TRANSPORTATION
 PROJECT NUMBER 009215.00
 PIN 009215.00



Barry S. Sheff
 SIGNATURE
 P.E. NUMBER 9708
 DATE 10/11/04

PROJ. MANAGER	PAUL POTTLE	DATE	BY
DESIGN-DETAILED	BSS	10/11/04	JBC
CHECKED-REVIEWED	DAS	10/11/04	BSS
DESIGN-DETAILED	DAS		
DESIGN-DETAILED			
REVISIONS 1			
REVISIONS 2			
REVISIONS 3			
REVISIONS 4			
FIELD CHANGES			

CITY OF PORTLAND
 OCEAN GATEWAY PHASE 1
 EXISTING BATHYMETRIC PLAN

C101