

### GENERAL NOTES

- SITE AND TOPOGRAPHIC DATA WERE PROVIDED BY NUMEROUS SOURCES AS IDENTIFIED BELOW AND COMPILED BY WOODARD & CURRAN INC. IN FEBRUARY OF 2001 AND SEPTEMBER OF 2003. ENTITIES DEPICTED ON THE EXISTING SITE PLAN WERE NOT FIELD VERIFIED FOR ACCURACY OR OMISSIONS.
- VERTICAL DATUM IS REFERENCED TO MEAN LOWER LOW WATER (MLLW) WITH ONE FOOT CONTOUR INTERVALS. MLLW IS -4.57 FEET NGVD 1929, CITY DATUM (PORTLAND HARBOR). HORIZONTAL DATUM IS REFERENCED TO STATE PLANE NAD 1983 (FEET), MAINE WEST ZONE.
- EXISTING CONDITIONS BASE MAP WAS COMPILED USING DATA PROVIDED BY THE CITY OF PORTLAND ENGINEERING OFFICE, BATH IRON WORKS, DEPARTMENT OF PUBLIC WORKS, AND OWEN-HASKELL COMPANY OF PORTLAND, MAINE. CONTRACTED THROUGH ROYAL RIVER SURVEY OF YARMOUTH, MAINE. PLANIMETRIC AND TOPOGRAPHIC DATA PROVIDED BY PORTLAND ENGINEERING WAS COMPILED USING 2000 AERIAL IMAGES BY BRADSTREET CONSULTANTS OF MANCHESTER, MAINE. GROUND LEVEL SURVEY CONDUCTED BY DEPARTMENT OF PUBLIC WORKS CONFIRMED LOCAL ACCURACY OF CERTAIN EXISTING STRUCTURES AT COMMERCIAL STREET/INDIA STREET INTERSECTION. BOUNDARY SURVEY CONDUCTED IN 2003 BY OWEN HASKELL COMPANY. BATHYMETRIC SURVEY CONDUCTED IN 2003 BY F.M. BECK CO.
- THE UTILITY LOCATIONS SHOWN ON THE PLANS ARE APPROXIMATE AND REQUIRE FIELD VERIFICATION BY THE CONTRACTOR PRIOR TO CONSTRUCTION ACTIVITY. NOT ALL EXISTING UTILITIES ARE SHOWN ON PLANS.
- CLEAN AND/OR FLUSH ALL MANHOLES, CATCH BASINS, AND ASSOCIATED PIPING AFTER THE WORK HAS BEEN COMPLETED.
- COORDINATE CONSTRUCTION ACTIVITY WITH UTILITY COMPANIES, EMERGENCY SERVICES, CITY AND DEPARTMENT. CONTACTS ARE LISTED IN SPECIFICATIONS. NOTIFY UTILITY COMPANIES WITHIN 48 HOURS OF WORK ACTIVITY ADJACENT TO THOSE UTILITIES.
- CONTRACTOR SHALL NOTIFY ALL UTILITIES PRIOR TO COMMENCING WORK, ALLOWING SUFFICIENT TIME TO LOCATE AND MARK THE LOCATION OF BURIED UTILITIES. CONTRACTOR SHALL CONTACT "DIG SAFE", TELEPHONE 888-344-7233, PRIOR TO EXCAVATION.
- RESTORE ALL AREA DISTURBED BY CONTRACTOR'S OPERATIONS TO ORIGINAL FINISH (GRAVEL, PAVEMENT, GRASS, ETC.) UNLESS OTHERWISE NOTED ON PLANS. RESTORATION OF PAVED SURFACES, GRAVEL SURFACES, DRIVEWAYS, AND LAWNS DAMAGED BY CONTRACTOR SHALL BE INCIDENTAL TO THE PROJECT. ALL CURB DAMAGED BY CONSTRUCTION ACTIVITIES SHALL BE REPLACED IN KIND AND SHALL CONFORM TO CITY OF PORTLAND AND MAINE DOT SPECIFICATIONS. COST SHALL BE INCIDENTAL TO THE PROJECT.
- PROPERLY PROTECT AND DO NOT DISTURB PROPERTY IRONS AND MONUMENTS NOT INDICATED ON THE DRAWINGS FOR REMOVAL. IF DISTURBED, THE PROPERTY MONUMENT SHALL BE RESET AT THE CONTRACTOR'S EXPENSE, BY A REGISTERED LAND SURVEYOR APPROVED BY THE DEPARTMENT.
- CALCULATIONS FOR STATIONING, PIPE LENGTHS, AND PIPE INVERTS ARE BASED ON CENTERLINE MEASUREMENTS.
- EXISTING FACILITIES (I.E. GUARDRAILS, TREES, POLES, LIGHT POSTS, CATCH BASINS, ETC.) SHALL BE REMOVED AND PROTECTED DURING CONSTRUCTION. DEPARTMENT RETAINS RIGHT TO KEEP ANY AND ALL REMOVED FACILITIES. CONTRACTOR TO DISPOSE OF ANY REMOVED FACILITY AT THE REQUEST OF DEPARTMENT OR RESIDENT AT CONTRACTOR'S EXPENSE.
- MAINTAIN VEHICULAR AND PEDESTRIAN FLOW THROUGH COMMERCIAL STREET AND INDIA STREET INTERSECTION AND THROUGH HANCOCK STREET AND FORE STREET INTERSECTION AT ALL TIMES. COORDINATE WORK WITH CITY AT LEAST FORTY EIGHT (48) HOURS PRIOR TO PERFORMING WORK IN EXISTING STREETS.
- DO NOT PARK, IMPEDE ACCESS TO, OR STORE EQUIPMENT ON ADJACENT CITY OR PRIVATELY OWNED LOTS, UNLESS PERMISSION HAS BEEN GRANTED IN WRITING BY CITY, DEPARTMENT OR LAND OWNER.
- COORDINATE DISRUPTION OF PRIVATE UTILITY SERVICES WITH LANDOWNERS AT LEAST TWO DAYS (48 HOURS) PRIOR TO DISRUPTION. ALL UTILITY COORDINATION IS RESPONSIBILITY OF CONTRACTOR.
- RESTRICT ACCESS TO SITE THROUGH THE USE OF APPROPRIATE SIGNAGE, GATES, BARRIERS, FENCES, ETC. SITE SHALL BE LEFT WITH APPROPRIATE SAFETY MEASURES IN PLACE DURING NON-WORKING HOURS. NO TRENCH SHALL BE LEFT OPEN DURING NON-WORKING HOURS. SITE SAFETY IS THE RESPONSIBILITY OF CONTRACTOR, DURING BOTH WORKING AND NON-WORKING HOURS.
- CONTRACTOR IS RESPONSIBLE FOR OBTAINING ALL NECESSARY CONSTRUCTION PERMITS. PERMIT APPLICATIONS SHALL BE SUBMITTED WITH ADEQUATE TIME SO AS NOT TO DELAY CONSTRUCTION.
- ALL WORK ASSOCIATED WITH THE PROJECT SHALL BE COMPLETED IN ACCORDANCE WITH ARTICLES VI, VII, AND IX OF CHAPTER 25-STREETS, SIDEWALKS AND OTHER PUBLIC PLACES OF THE CITY OF PORTLAND CODE OF ORDINANCES.
- ALL SEWER CONSTRUCTION IN THE PUBLIC WAY SHALL BE COMPLETED IN ACCORDANCE WITH ARTICLES II OF CHAPTER 24-SEWERS OF THE CITY OF PORTLAND CODE OF ORDINANCES.
- THE CITY OF PORTLAND ENGINEERING DIVISION REQUIRES THAT UPON COMPLETION OF CONSTRUCTION, A COMPLETE SET OF "AS-BUILT" DRAWINGS THAT REFLECT ANY AND ALL MODIFICATIONS TO BOTH THE SANITARY AND STORM SEWER SYSTEM WITHIN THE PROJECT LIMITS BE SUBMITTED TO THE DIVISION. THESE DRAWINGS SHALL BE SUBMITTED IN BOTH DIGITAL AND HARD COPY FORMAT.
- THE CITY OF PORTLAND ENGINEERING DIVISION REQUIRES THAT UPON COMPLETION OF CONSTRUCTION, A COMPLETE SET OF "AS-BUILT" DRAWINGS THAT REFLECT ANY AND ALL MODIFICATIONS WITHIN THE PUBLIC RIGHT OF WAY BE SUBMITTED TO THE DIVISION. THESE DRAWINGS SHALL BE SUBMITTED IN BOTH DIGITAL AND HARD COPY FORMAT.

#### HORIZONTAL CONTROL

CITY CONTROL POINT  
POINT # 2112 MON. AT CORNER OF  
INDIA STREET AND CONGRESS STREET  
CITY: N 302080.27 E 2930090.09

CITY CONTROL POINT  
POINT # 2101 MON. AT CORNER OF  
FORE STREET AND INDIA STREET  
CITY: N 301285.32 E 2930920.19

CITY CONTROL POINT  
POINT # 2010 PK NAIL AT BACK OF SIDEWALK ON  
CORNER OF COMMERCIAL STREET AND INDIA STREET  
CITY: N 301017.02 E 2931125.25

#### VERTICAL CONTROL

NATIONAL OCEANIC AND ATMOSPHERIC ADMINISTRATION (NOAA) -  
TIDAL BENCHMARK

BENCHMARK STAMPING: NO 3 1971  
SURVEY DISK IN GRANITE SEA WALL LOCATED ADJACENT TO THE  
NORTHWEST CORNER OF THE MAINE STATE PIER, 53.0 FEET NORTH  
OF CORNER FORMED BY WHARF AND SEA WALL INTERSECTION, 19.9  
FEET SOUTH OF A CORNER FORMED BY EDGE OF SEA WALL AND A  
PROJECTION OUT FROM THE SEA WALL.

BENCHMARK ELEV. = 15.61 FEET (MEAN LOWER LOW WATER)

MARINE VERTICAL DATUM: MLLW EL. 0.00 = -4.57 FT (CITY DATUM)

### SYMBOLS

DESCRIPTION	EXISTING	PROPOSED
SANITARY SEWER MANHOLE	○	●
SANITARY SEWER SERVICE CLEANOUT	○	○
STORM DRAIN MANHOLE	○	○
CATCH BASIN	□	□
PARKING METER POST	○	○
TELECOMM MANHOLE	○	○
TELECOMM SERVICE BOX	□	□
ELECTRIC MANHOLE	○	○
TRANSFORMER	⊗	⊗
UTILITY POLE W/GUY	○	○
UTILITY POLE	○	○
LIGHTPOST	○	○
GAS METER BOX	○	○
GAS VENT	○	○
GAS GATE	○	○
WATER GATE	○	○
CURB STOP	○	○
HYDRANT	○	○
WATER WELL	○	○
WATER METER BOX	□	□
SIGN	○	○
MAILBOX	○	○
FLAGPOLE	○	○
WETLAND HATCHING	▨	▨
CONIFEROUS TREE	⊕	⊕
DECIDUOUS TREE	⊙	⊙
STONE CHECK DAM	▭	▭
SURVEY STATION	△	△
TEMPORARY BENCH MARK	○	○
IRON PIN	○	○
MONUMENTS	○	○
SPOT ELEVATION	○	○
TEST PIT & NUMBER	○	○
BORING & NUMBER	○	○

INDICATES EITHER BITUMINOUS OR BRICK SIDEWALK. SEE SITE PLANS.

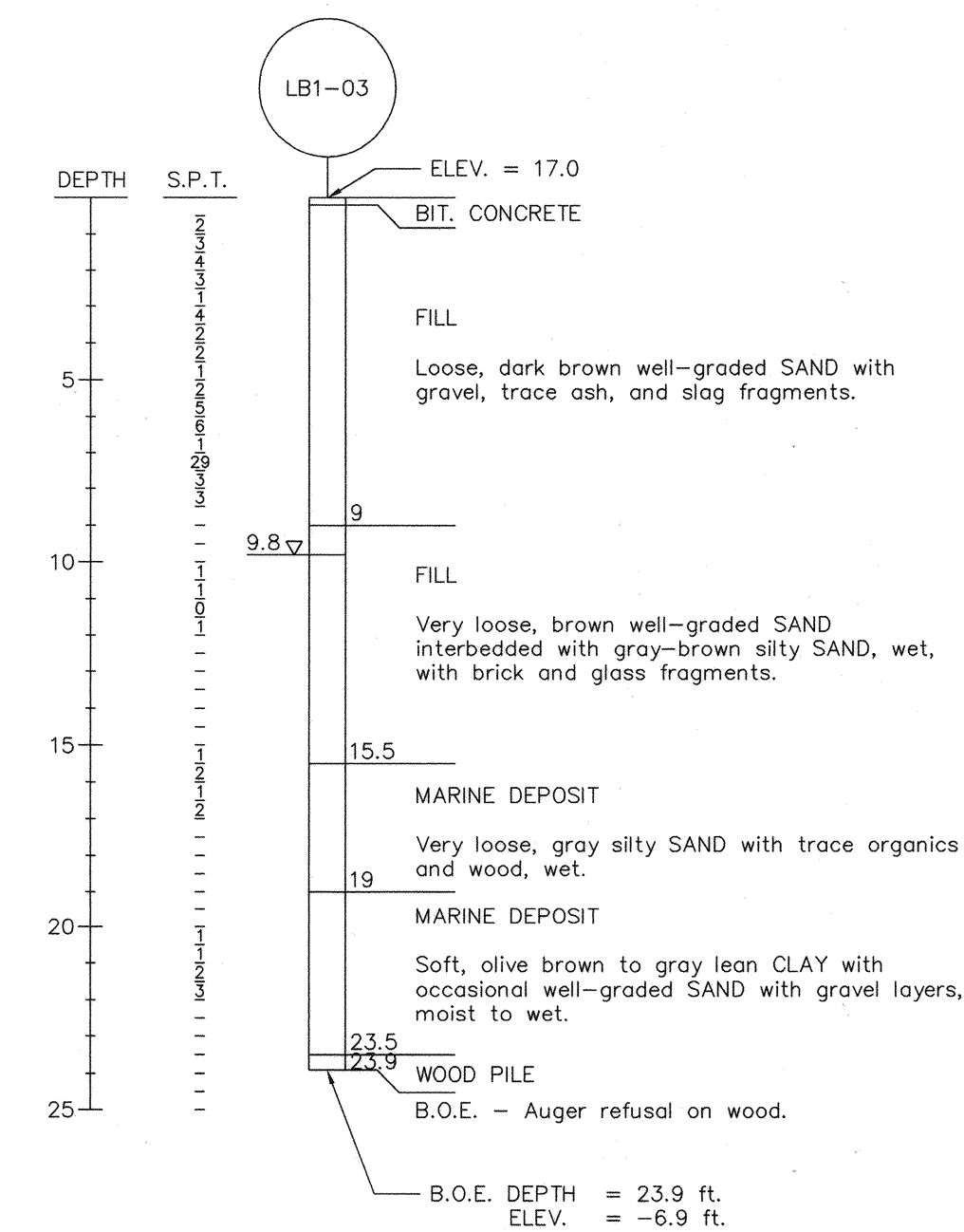
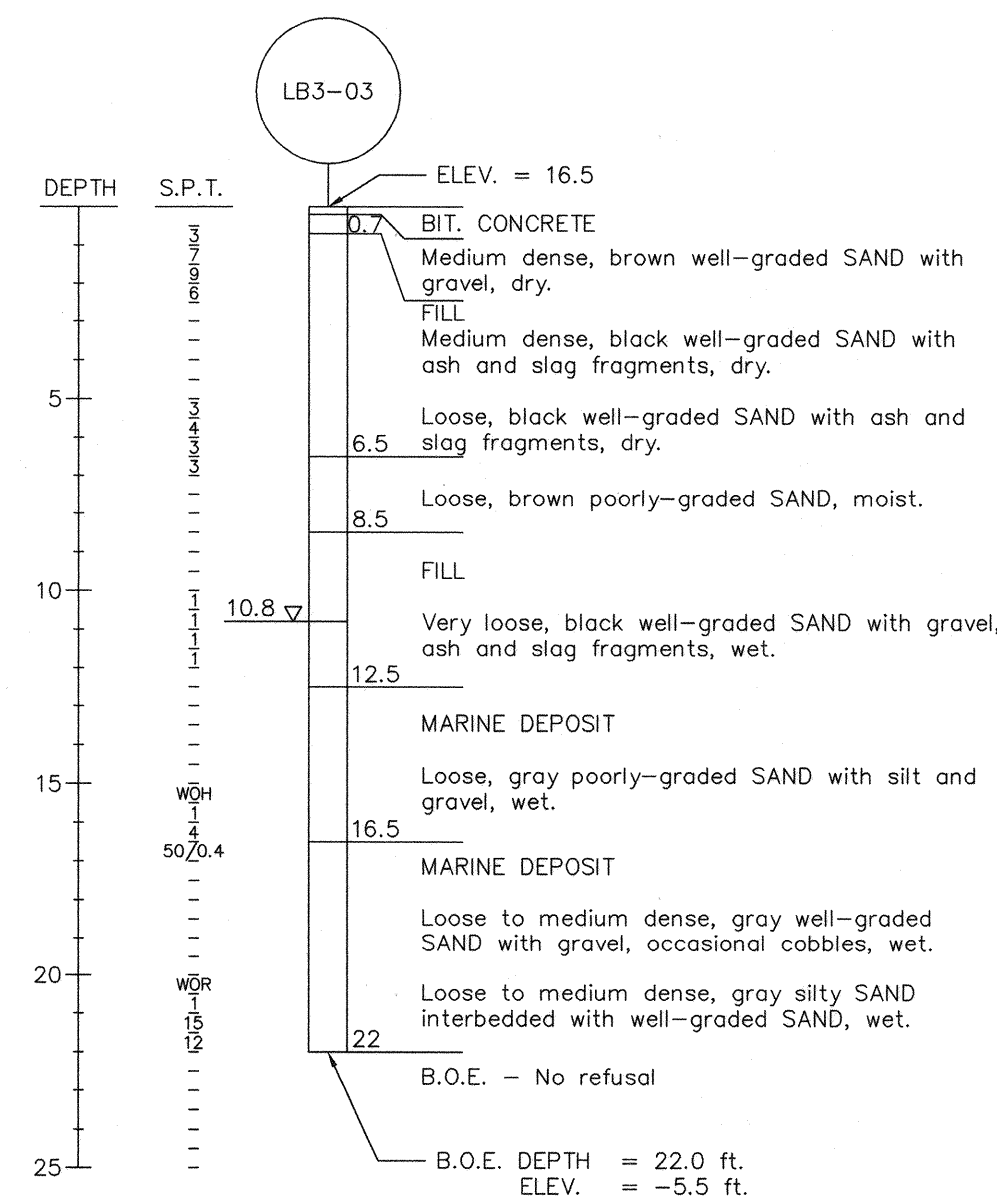
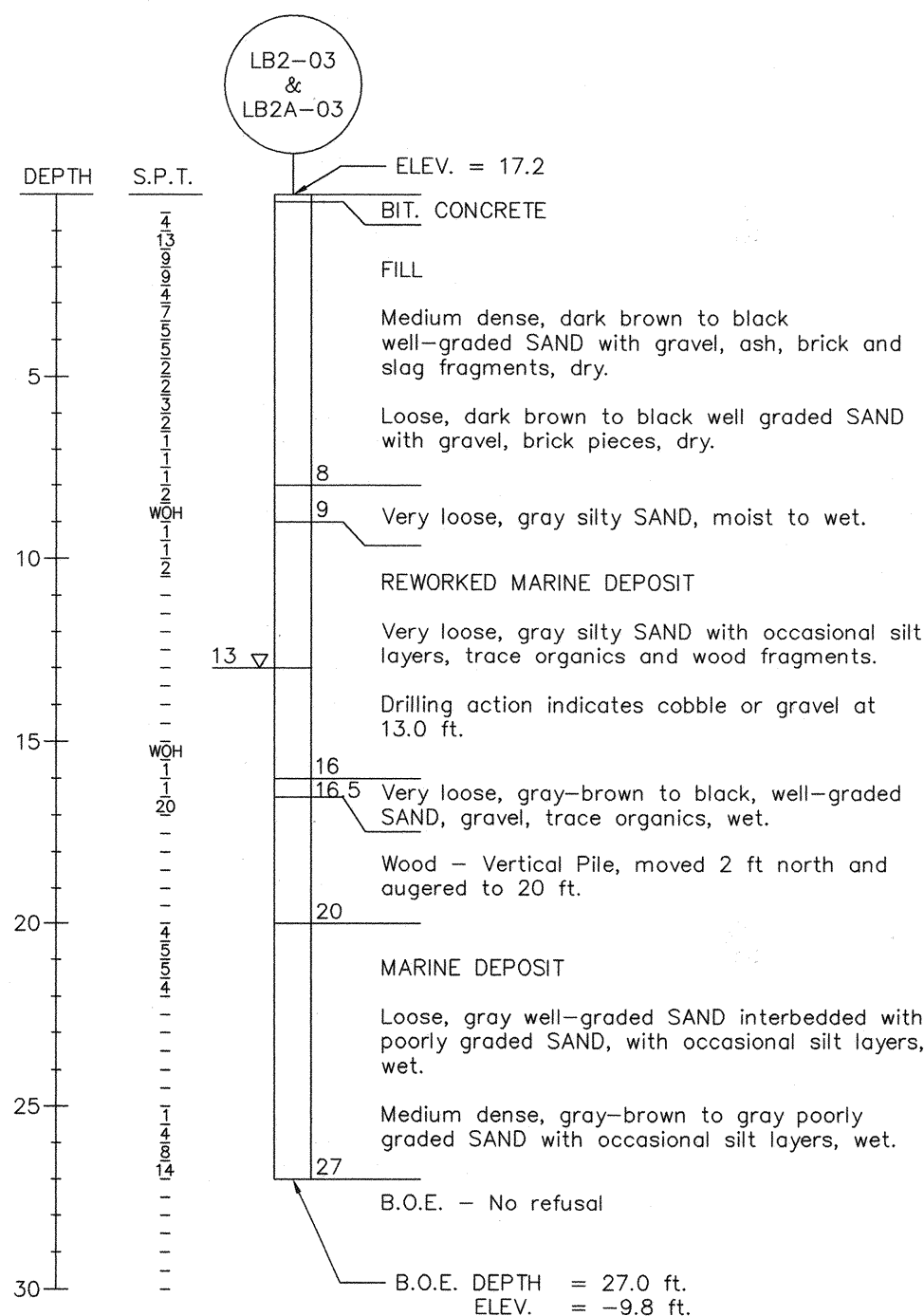
INDICATES EITHER FULL DEPTH OR PARTIAL DEPTH CONSTRUCTION. SEE SITE PLANS.

### LINE TYPES

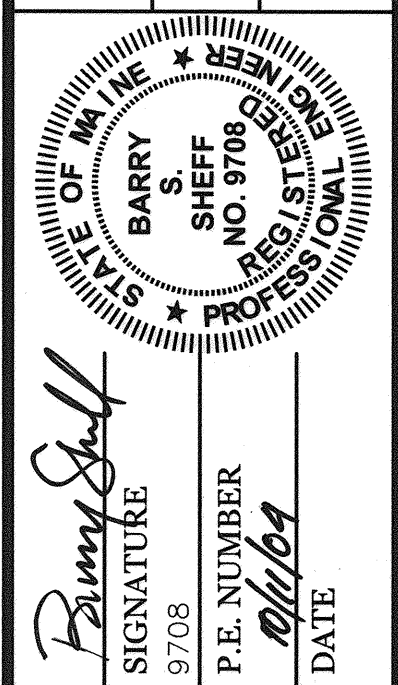
DESCRIPTION	EXISTING	PROPOSED
CONTOUR (1' INTERVAL)	---122---	---122---
CONTOUR (INDEX)	---120---	---120---
SANITARY SEWER	—S—	—S—
FORCE MAIN	—FM—	—FM—
STORM DRAIN	—SD—	—SD—
UNDERDRAIN	—UD—	—UD—
WATER MAIN	—W—	—W—
UNDERGROUND ELECTRIC	—E—	—E—
UNDERGROUND TELEPHONE	—T—	—T—
UNDERGROUND TELEVISION	—TV—	—TV—
GAS LINE	—G—	—G—
OVERHEAD ELECTRIC	—OE—	—OE—
ABANDONED SEWER	—AS—	—AS—
ABANDONED WATER MAIN	—AW—	—AW—
CULVERT	—C—	—C—
HOUSE SERVICE / LATERAL	—S—	—S—
PROPERTY LINE	—P—	—P—
RIGHT OF WAY	—R—	—R—
EASEMENT	—E—	—E—
EDGE OF VEGETATION	—V—	—V—
FENCE	—F—	—F—
CENTERLINE	—CL—	—CL—
RETAINING WALL	—RW—	—RW—
STONEMALL	—SM—	—SM—
CURB	—C—	—C—
EDGE OF PAVEMENT	—EP—	—EP—
EDGE OF GRAVEL	—EG—	—EG—
GUARDRAIL	—GR—	—GR—
NARROW GAUGE RR TRACKS	—RR—	—RR—
DRAINAGE DITCH / SWALE	—DD—	—DD—

### ABBREVIATIONS

&	AND ABOVE GROUND
B	BORING
BIT.	BITUMINOUS
BM	BENCHMARK
CB	CATCH BASIN
CMF	CENTRAL MAINE POWER COMPANY
COMP	CORRUGATED METAL PIPE
COMM	COMMUNICATION
CONC	CONCRETE
COND.	CONDUIT
CITY	CITY OF PORTLAND
CSO	COMBINED SEWER OVERFLOW
DI	DUCTILE IRON
DIA.	DIAMETER
DMH	DRAIN MANHOLE
DPW	CITY OF PORTLAND, DEPARTMENT OF PUBLIC WORKS
DS	DOWN-SPOUT
E	EAST
E	UNDERGROUND ELECTRICAL
EL.	ELEVATION
EMBED.	EMBEDMENT
EX	EXISTING
FF	FINISH FLOOR
FIN.	FINISH
FL	FLOOR
FT	FOOT/FEET
GALV.	GALVANIZED
GRAN.	GRANITE
HDPE	HIGH DENSITY POLYETHYLENE
HWY	HIGHWAY
HYD	HYDRANT
IN	INCH
INV.	INVERT
LP	LIGHT POST
LF	LINEAR FEET
MAX.	MAXIMUM
MAINEDOT	MAINE DEPARTMENT OF TRANSPORTATION
MNGRR	MAINE NARROW GAUGE RAIL ROAD
MIN.	MINIMUM
MON	MONUMENT
NO.	NUMBER
NR	NO REFUSAL
N.T.S.	NOT TO SCALE
N.U.	NORTHERN UTILITIES
O.D.	OUTSIDE DIAMETER
OE	OVERHEAD ELECTRIC
OH	OVERHEAD
±	PLUS OR MINUS
PCC	PRE-STRESSED CONCRETE CYLINDER
PLS	PROFESSIONAL LAND SURVEYOR
PSI	PER SQUARE INCH
PVC	PER SQUARE INCH GAUGE PRESSURE
PVC	POLYVINYL CHLORIDE
PWD	PORTLAND WATER DISTRICT
R.O.W.	RIGHT-OF-WAY
RCP	REINFORCED CONCRETE PIPE
REINF.	REINFORCED
REQ'D	REQUIRED
RET	RETAINING
RLS	REGISTERED LAND SURVEYOR
RT	ROUTE
S	SLOPE
S	SEWER
SD	STORM DRAIN
SMH	SEWER MANHOLE
SCH	SCHEDULE
SDR	STANDARD DIMENSION RATIO
STA.	STATION
TYP.	TYPICAL
TWC	TIME WARNER CABLE
UC	UNDERGROUND CABLE
U.N.O.	UNLESS NOTED OTHERWISE
VER.	VERTIZON
W	WEST
W/	WITH
WV	WATER VALVE



STATE OF MAINE  
DEPARTMENT OF TRANSPORTATION  
PROJECT NUMBER 009215.00  
PIN 009215.00



DATE	BY	PROJ. MANAGER	PAUL POTLITZ
10/17/04	ABC	DAS	DAS
10/17/04	BSS	DAS	DAS
9/7/08		DESIGN-REVIEWED	DESIGN-REVIEWED
		DESIGN-DETAILED	DESIGN-DETAILED
		REVISIONS 1	REVISIONS 1
		REVISIONS 2	REVISIONS 2
		REVISIONS 3	REVISIONS 3
		REVISIONS 4	REVISIONS 4
		FIELD CHANGES	FIELD CHANGES

CITY OF PORTLAND  
OCEAN GATEWAY PHASE 1  
CIVIL GENERAL NOTES, LEGEND,  
ABBREVIATIONS, AND BORING LOGS