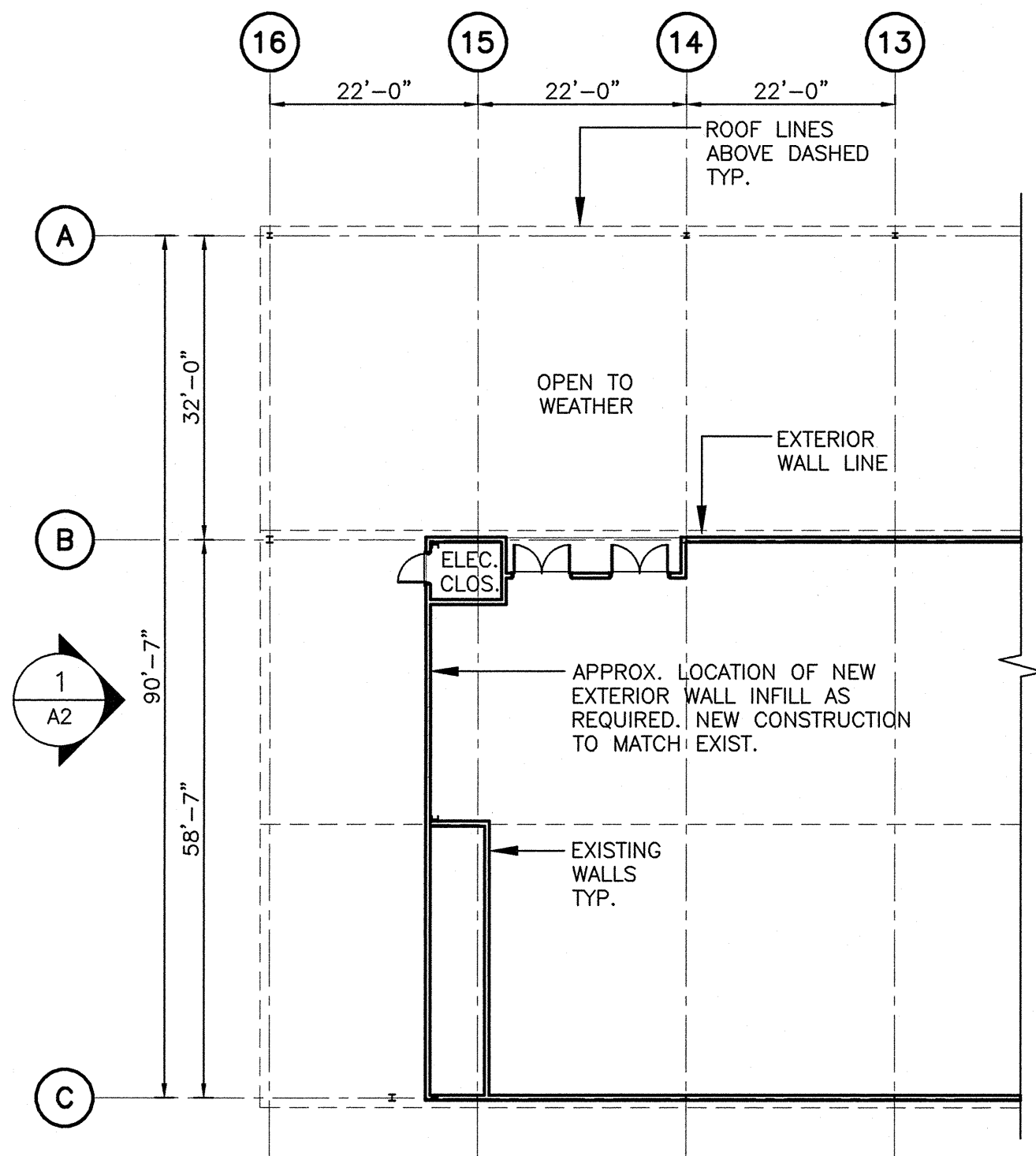
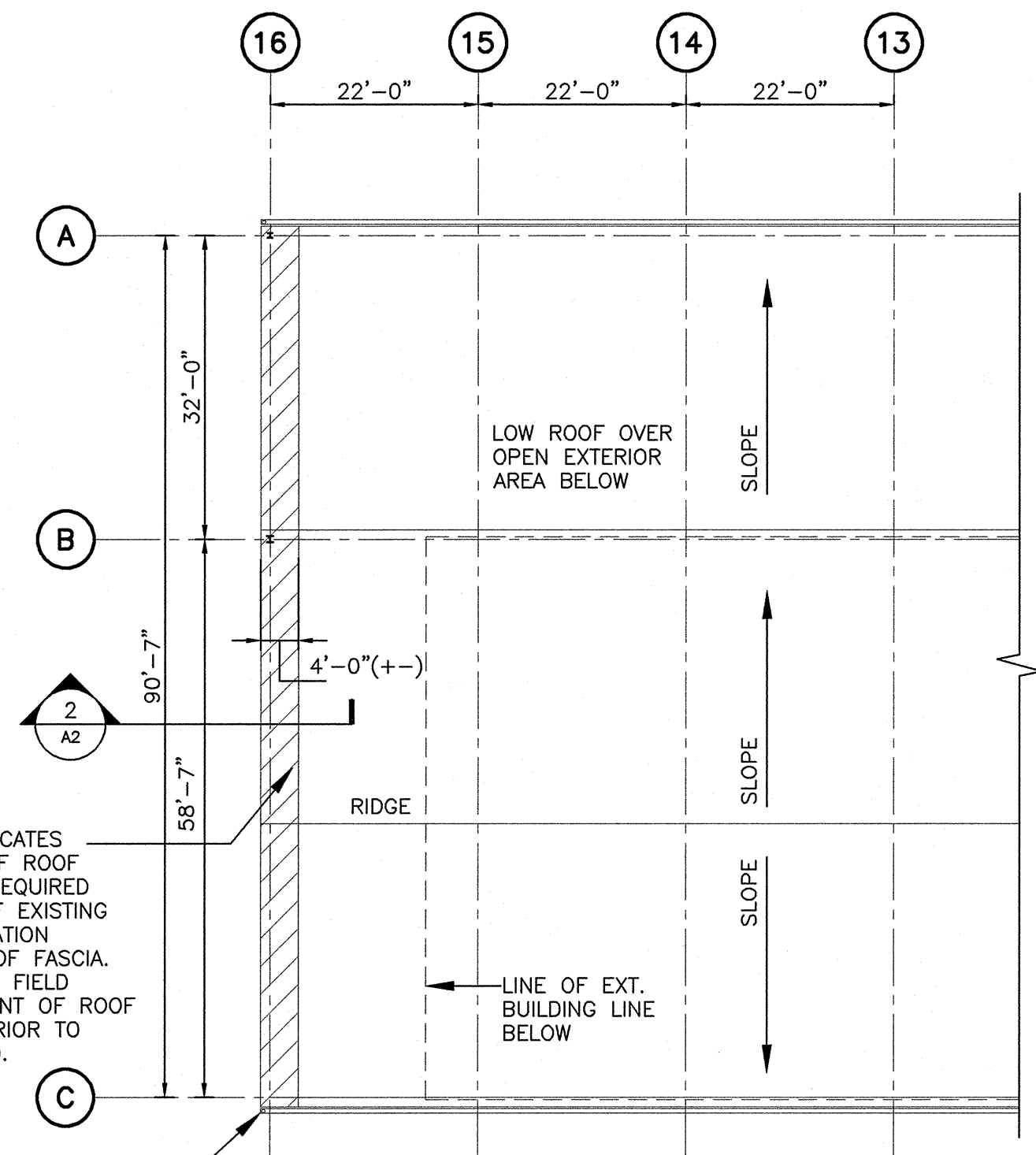


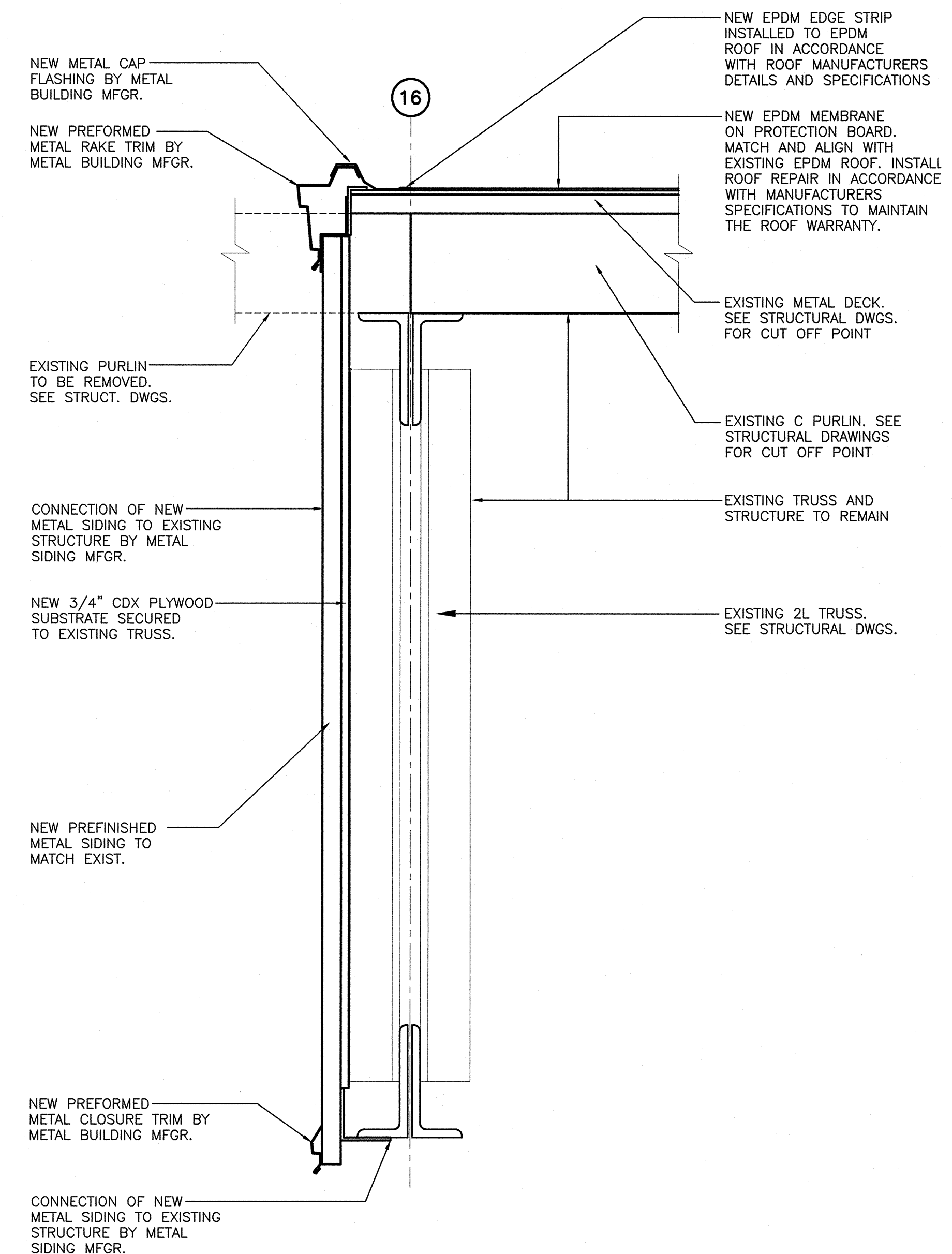
REVIEWED BY: CIVIL: INTERLOCKABLE ARCH: INTERLOCKABLE STR: INTERLOCKABLE PLUM: INTERLOCKABLE FIRE: INTERLOCKABLE MECH: INTERLOCKABLE ELEC: INTERLOCKABLE



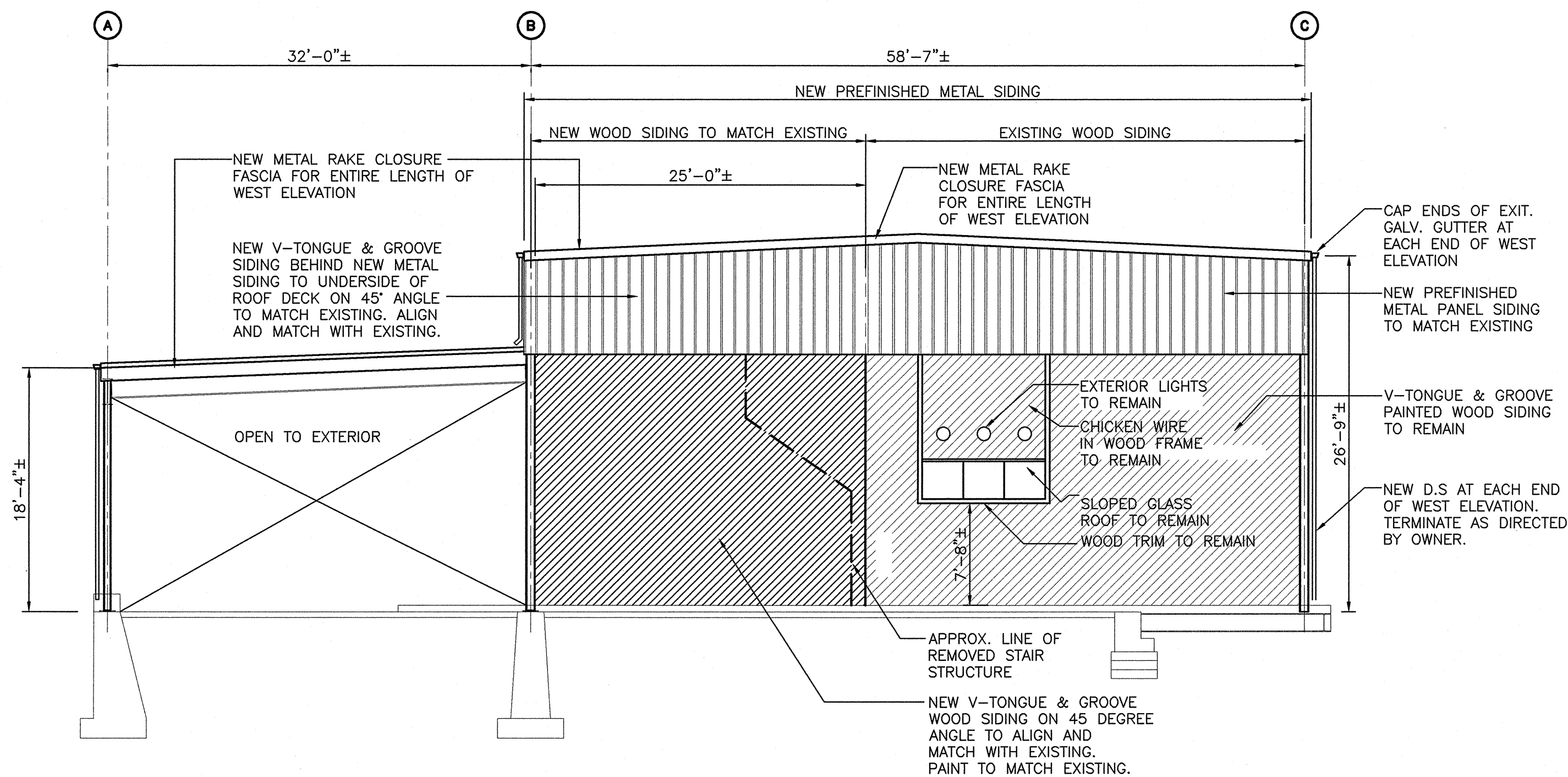
PARTIAL FIRST FLOOR PLAN-WEST END
SCALE: 1/16"=1'-0"



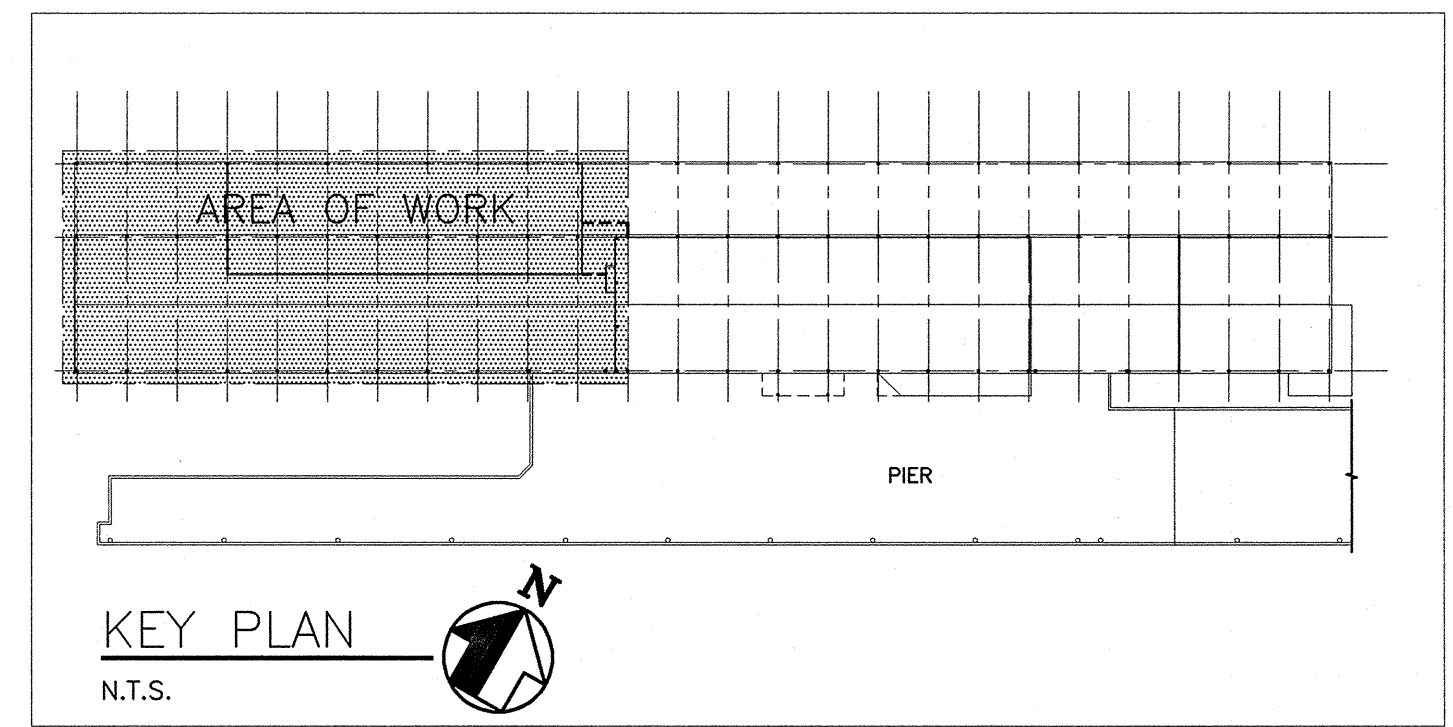
PARTIAL ROOF PLAN-WEST END
SCALE: 1/16"=1'-0"



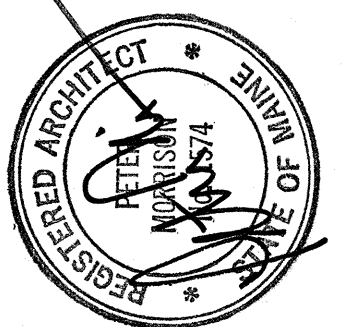
2 **DETAIL-ROOF EDGE AT DEMOLISHED WALL**
SCALE: 1 1/2"=1'-0"



1 **WEST ELEVATION**
SCALE: 1/8"=1'-0"



KEY PLAN
N.T.S.



Maguire Group Inc.
Architects/Engineers/Planners
400 Commercial Street
Portland, Maine 04101



PARTIAL DEMOLITION
OF INTERNATIONAL MARINE TERMINAL
COMMERCIAL STREET - PORTLAND, MAINE

ARCHITECTURAL
PARTIAL FLOOR AND ROOF PLAN,
WEST ELEVATION

PROJECT NO.: 17181
DESIGNED BY: JAG
DRAWN BY: C.M.
CHK'D BY:
DATE: 11/19/04
SCALE: AS NOTED
SHEET NO.:

A2

BID ISSUE - NOVEMBER 19, 2004

DRAWING FILE: N:\Projects\17181\ACD\ARCH\17181\FLOOR.dwg PLOTTED: Nov 16, 2004 - 12:33pm BY: KChan