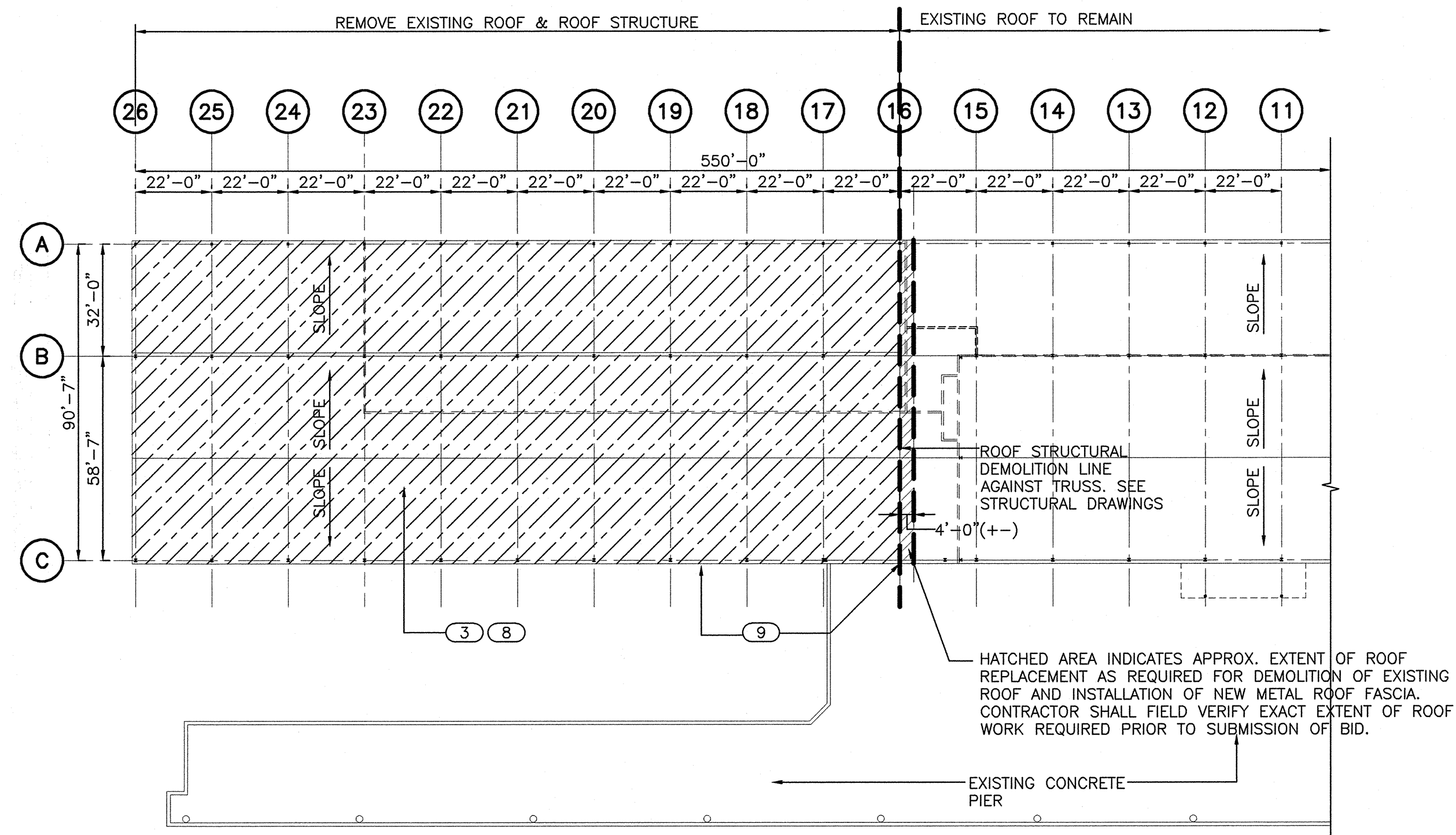
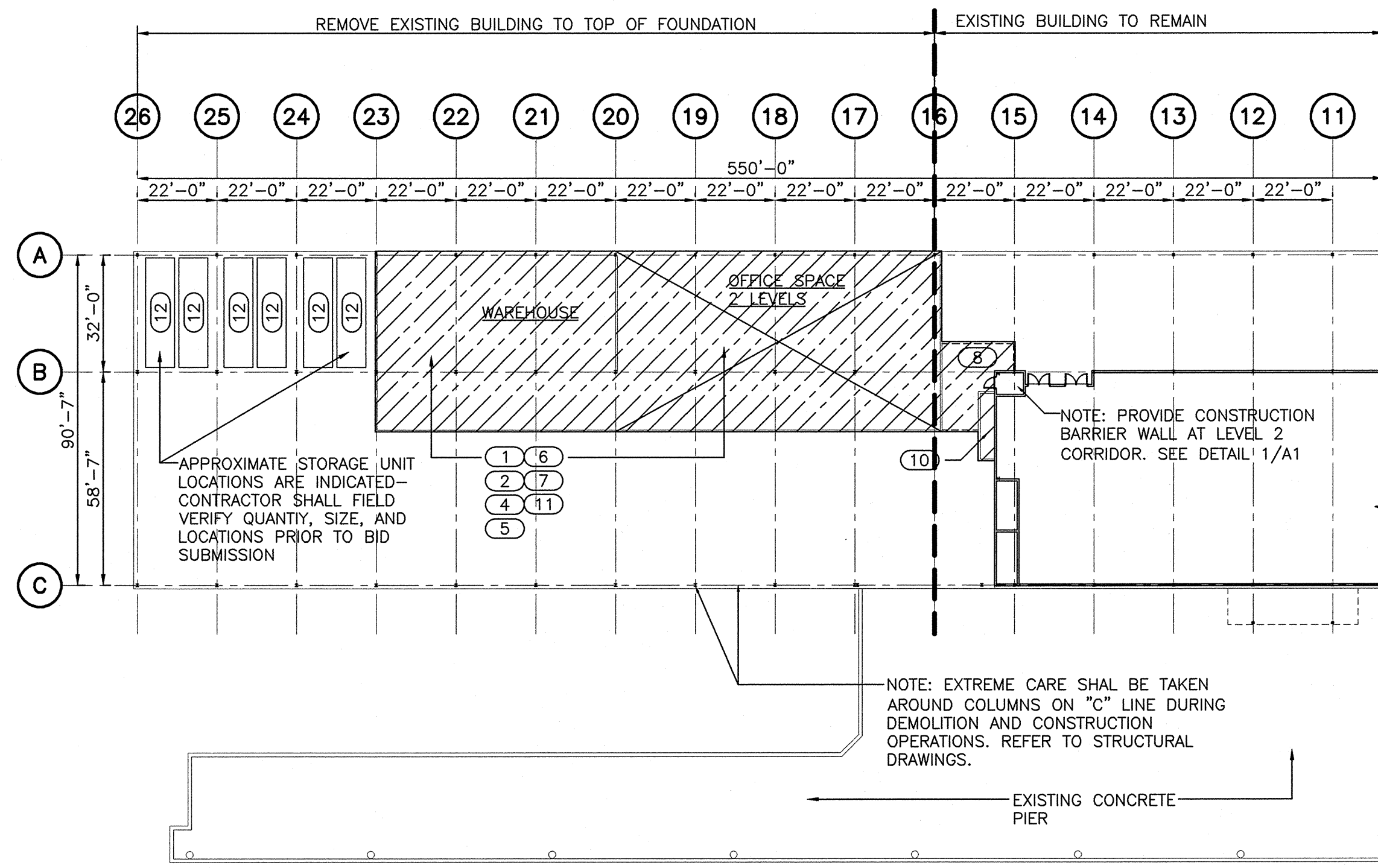


REVIEWED BY: CML: INTERLADAGE ARCH: INTERLADAGE STRUC: INTERLADAGE PLUM: INTERLADAGE FIRE: INTERLADAGE MECH: INTERLADAGE ELEC: INTERLADAGE



DEMOLITION ROOF PLAN
SCALE: 1/32"=1'-0"



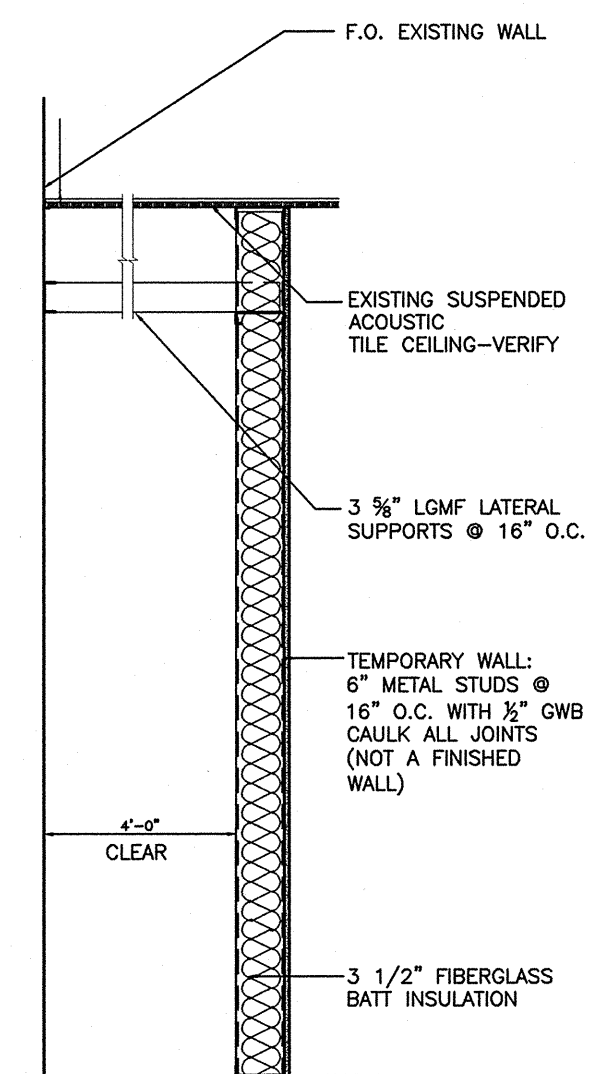
DEMOLITION FLOOR PLAN
SCALE: 1/32"=1'-0"

GENERAL NOTES:

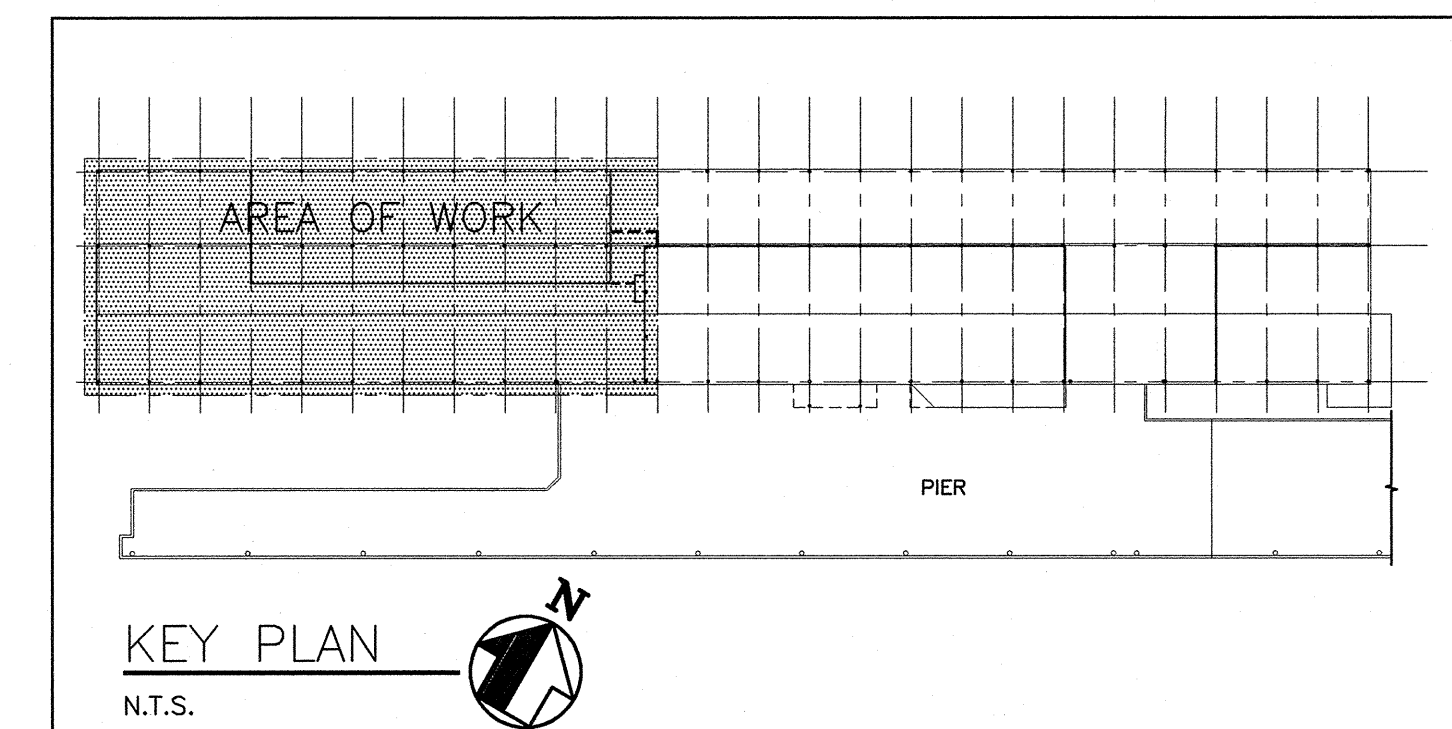
- SOME INFORMATION ON THESE DRAWINGS MAY NOT REFLECT ALL ON SITE AS-BUILT CONDITIONS. THE CONTRACTOR SHALL VERIFY ALL CONDITIONS INDICATED ON THESE DRAWINGS WITH THE EXISTING FIELD CONDITIONS, AND REPORT ANY INCONSISTENCIES, ERRORS, AND/OR OMISSIONS TO MAGUIRE GROUP INC. IN WRITING IMMEDIATELY UPON DISCOVERY, AND PRIOR TO COMMENCEMENT OF THE WORK.
- INDICATED DIMENSIONS ARE PLUS OR MINUS. THE CONTRACTOR SHALL FIELD VERIFY ALL DIMENSIONS PRIOR TO SUBMISSION OF BID.
- DEMOLITION OF HAZARDOUS MATERIALS BY HAZARDOUS MATERIALS CONTRACTOR. REFER TO ENVIRONMENTAL REPORT AND PROJECT SPECIFICATIONS.
- THE CONTRACTOR SHALL FIELD VERIFY THE LOCATION OF ANY STRUCTURAL MEMBERS PRIOR TO CONSTRUCTION, AND SHALL PROVIDE ALL NECESSARY SHORING, BRACING, AND TEMPORARY SUPPORTS AS REQUIRED TO ENSURE STRUCTURAL STABILITY, AND TO PREVENT COLLAPSE OF EXISTING STRUCTURES AND CONSTRUCTION.
- THE CONTRACTOR SHALL PROTECT ALL ADJACENT CONSTRUCTION THAT IS TO REMAIN, AND SHALL REPAIR AND PATCH ANY DAMAGED EXISTING CONSTRUCTION. REPAIRS SHALL MATCH ADJACENT EXISTING CONSTRUCTION UNLESS OTHERWISE NOTED.
- A TEMPORARY SOUND REDUCING AND DUSTPROOF CONSTRUCTION BARRICADE SHALL BE CONSTRUCTED ALONG THE LEVEL 2 PASSAGEWAY WEST WALL AS INDICATED ON THE DEMOLITION PLAN.
- ALL REMOVAL AND DISPOSAL WORK SHALL BE PERFORMED IN A SAFE AND LEGAL MANNER.
- FLOORS AND OTHER EXISTING FINISHES TO REMAIN SHALL BE PROTECTED DURING DEMOLITION AND CONSTRUCTION OPERATIONS.
- REFER TO THE PLUMBING DRAWINGS FOR THE REMOVAL AND DISPOSAL OF ADDITIONAL EQUIPMENT, PIPES, OR OTHER ITEMS THAT SHALL ALSO BE INCLUDED AS PART OF THE SCOPE OF DEMOLITION WORK IN THIS CONTRACT.
- ALL PLUMBING SYSTEMS THAT ARE TO BE ALTERED AND/OR REMOVED SHALL BE DISCONNECTED AT THE SOURCE INDICATED ON THE DRAWINGS AND MADE SAFE BY THE PLUMBING CONTRACTOR PRIOR TO REMOVAL. REFER TO THE PLUMBING DRAWINGS.
- CONTRACTOR SHALL VISIT SITE AND FIELD VERIFY QUANTITIES OF WOOD AND STEEL STUD PARTITIONS, AND DOORS, WINDOWS, CASEWORK, AND FINISHES TO BE DEMOLISHED IN TWO-LEVEL OFFICE AREA AND ADJACENT WAREHOUSE SPACE.
- CONTRACTOR SHALL REMOVE, SALVAGE, AND REINSTALL SUSPENDED ACOUSTIC TILE CEILINGS AND/OR TILES AS REQUIRED TO ACCOMPLISH STRUCTURAL IMPROVEMENTS. FIELD VERIFY LOCATIONS AND QUANTITIES PRIOR TO SUBMISSION OF BID.

DEMOLITION WORK NOTES:

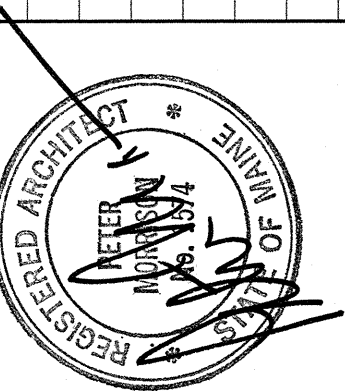
- REMOVE AND DISPOSE OF ALL WOOD FRAMED AND METAL FRAMED GYPSUM BOARD/PLASTER PARTITIONS AND ALL ASSOCIATED FASTENERS TO SUBSTRATE. REMOVE WOOD-FRAMED FLOOR SYSTEM AND ASSOCIATE FASTENERS, FINISHES, AND INSULATION.
- REMOVE AND DISPOSE OF ALL WALL, FLOOR, AND CEILING FINISHES TO SUBSTRATE.
- REMOVE EPDM ROOF AND ALL INSULATION, BLOCKING, AND FASTENERS TO SUBSTRATE. REMOVE METAL DECK AND ALL ASSOCIATED FASTENERS TO SUBSTRATE. REFER TO STRUCTURAL DRAWINGS.
- REMOVE AND DISPOSE OF EXISTING SUSPENDED ACOUSTIC TILE CEILING, GRID, AND ALL ASSOCIATED HANGERS, FASTENERS, ANCHORS, AND OTHER COMPONENTS TO SUBSTRATE.
- REMOVE AND DISPOSE OF EXISTING VINYL FLOOR, BASE, AND ADHESIVE COMPLETELY TO CONCRETE SLAB SUBSTRATE.
- REMOVE AND DISPOSE OF EXISTING GWB SOFFITS COMPLETELY TO SUBSTRATE.
- REMOVE AND DISPOSE EXISTING CASEWORK AND ALL ASSOCIATED HARDWARE AND FASTENERS COMPLETELY TO SUBSTRATE.
- REMOVE AND DISPOSE OF ELEVATED STRUCTURE COMPLETELY TO SUBSTRATE.
- REMOVE GALVANIZED METAL GUTTER AND DOWNSPOUTS WITHIN ROOF DEMOLITION LINE. CAP AT ROOF DEMOLITION LINE WITH MATERIAL TO MATCH EXISTING.
- REMOVE WOOD STAIRS AND ASSOCIATED WOOD STAIR STRUCTURE COMPLETELY TO SUBSTRATE.
- REMOVE AND DISPOSE OF ALL PLUMBING ITEMS AND ASSOCIATED COMPONENTS INDICATED ON THE PLUMBING DRAWINGS.
- REMOVE AND RELOCATE STORAGE TRAILERS AND FLATBEDS TO ON-SITE LOCATION AS DESIGNATED BY OWNER. FIELD VERIFY QUANTITY, SIZES, AND ACCESS POINTS.



1 **DETAIL - CONSTRUCTION BARRIER**
A1 SCALE: 1/4"=1'-0"



KEY PLAN
N.T.S.



Maguire Group Inc.
Architects/Engineers/Planners
400 Commercial Street
Portland, Maine 04101



PARTIAL DEMOLITION
OF INTERNATIONAL MARINE TERMINAL
COMMERCIAL STREET - PORTLAND, MAINE

ARCHITECTURAL

DEMOLITION PLANS AND NOTES

PROJECT NO.: 17181
DESIGNED BY: JAG
DRAWN BY: C.M.
CHK'D BY:
DATE: 11/19/04
SCALE: AS NOTED
SHEET NO.:

A1

BID ISSUE - NOVEMBER 19, 2004