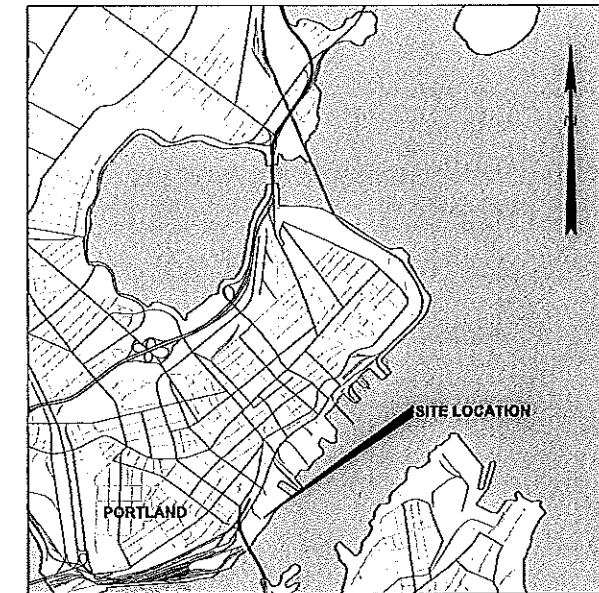
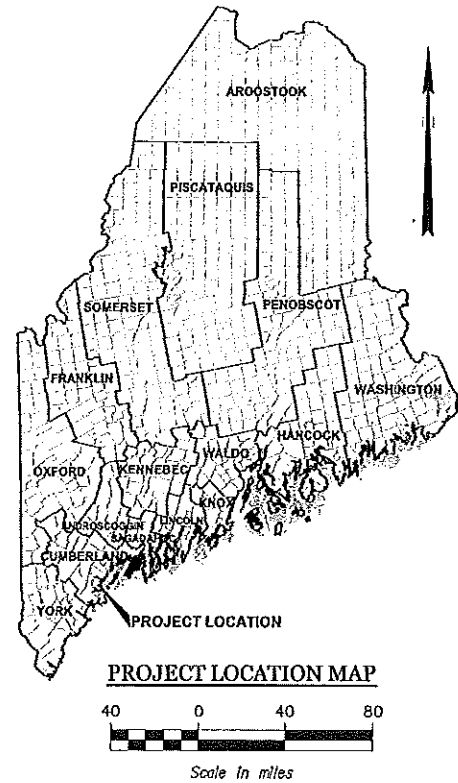


STATE OF MAINE DEPARTMENT OF TRANSPORTATION



CITY OF PORTLAND CUMBERLAND COUNTY

PORTLAND INTERNATIONAL MARINE RUBB BUILDING MODIFICATIONS PHASE 1 PIN: 018413.00



SOURCE:

SHEET INDEX

SHEET	TITLE
1	TITLE/INDEX SHEET
2	SITE PLAN
3	RUBB BUILDING MODIFICATIONS
4	CONCRETE FLOOR MODIFICATIONS
5	CONCRETE SLAB DETAILS
6	LIGHT POLE ANCHORAGE
7	MISCELLANEOUS DETAILS

RECEIVED
FEB - 4 2013
City of Portland
Planning Division

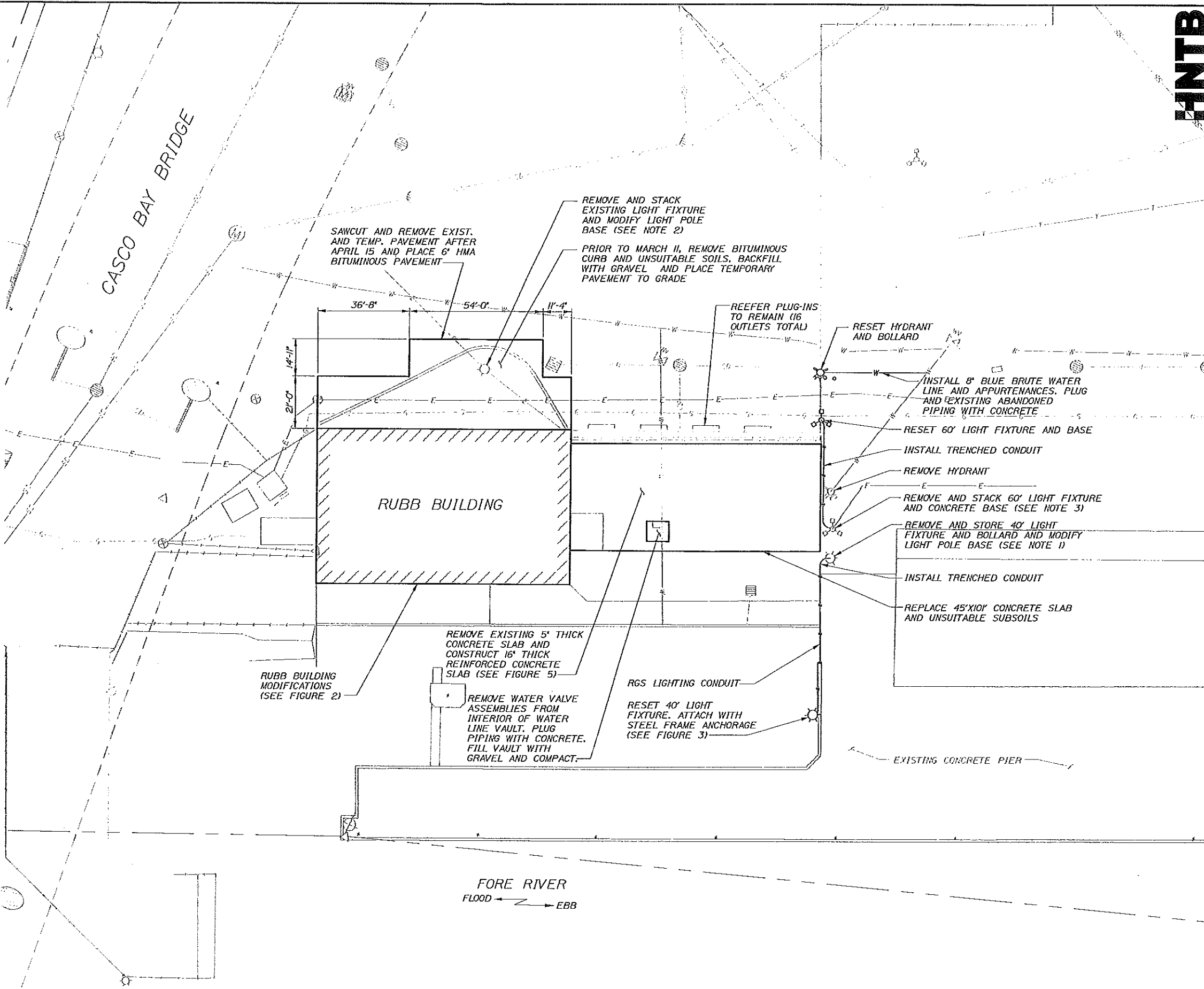
**PRELIMINARY
98% SUBMITTAL**

STATE OF MAINE DEPARTMENT OF TRANSPORTATION		APPROVED		DATE	
COMMISSIONER:		SIGNATURE		P.E. NUMBER	
CHIEF ENGINEER:		DATE		DATE	
PROJECT INFORMATION		PROGRAM		MULTIMEDIA	
PROJECT MANAGER		DESIGNER		CONSULTANT	
PROJECT RECORDS		CONTRACTOR		PROJECT COMPLETION DATE	
PORTLAND INTERNATIONAL MARINE TERMINAL IMPROVEMENTS PORTLAND CUMBERLAND COUNTY		PORTLAND INTERNATIONAL MARINE TERMINAL IMPROVEMENTS PORTLAND CUMBERLAND COUNTY		TITLE/INDEX SHEET	
SHEET NUMBER		1		1 OF 7	

PIN 018413.00

NOTES:

- CUT EXISTING POLE BASE DOWN BELOW PAVEMENT SURFACE AS REQUIRED AND PROVIDE A TRAFFIC RATED (HS-20) POLYMER CONCRETE FLUSH IN-GROUND BOX WITH WATERPROOF TOP. RELOCATE LIGHTING POLE AND REINSTALL ON NEW STEEL BRACKET AT EXISTING PIER SUPPORT (SEE FIGURE 3). EXTEND CIRCUIT CONDUCTORS UNDERGROUND FROM NEW IN-GROUND BOX TO RELOCATED LIGHTING POLE. MATCH EXISTING CONDUCTOR AND CONDUIT SIZE.
- CUT EXISTING POLE BASE DOWN BELOW THE PROPOSED PAVEMENT SURFACE AS REQUIRED AND PROVIDE A TRAFFIC RATED (HS-20) POLYMER CONCRETE FLUSH IN-GROUND BOX TO MAINTAIN CIRCUIT CONNECTION OF EXISTING LIGHTING CIRCUIT CONDUCTORS.
- LIGHT POLE BASE IS SET 3 FEET ABOVE GRADE WITH A 10'X10' UNDERGROUND FOOTING SET APPROXIMATELY 5 FEET BELOW GRADE.



SITE PLAN
SCALE: 1"=20'

HNTB

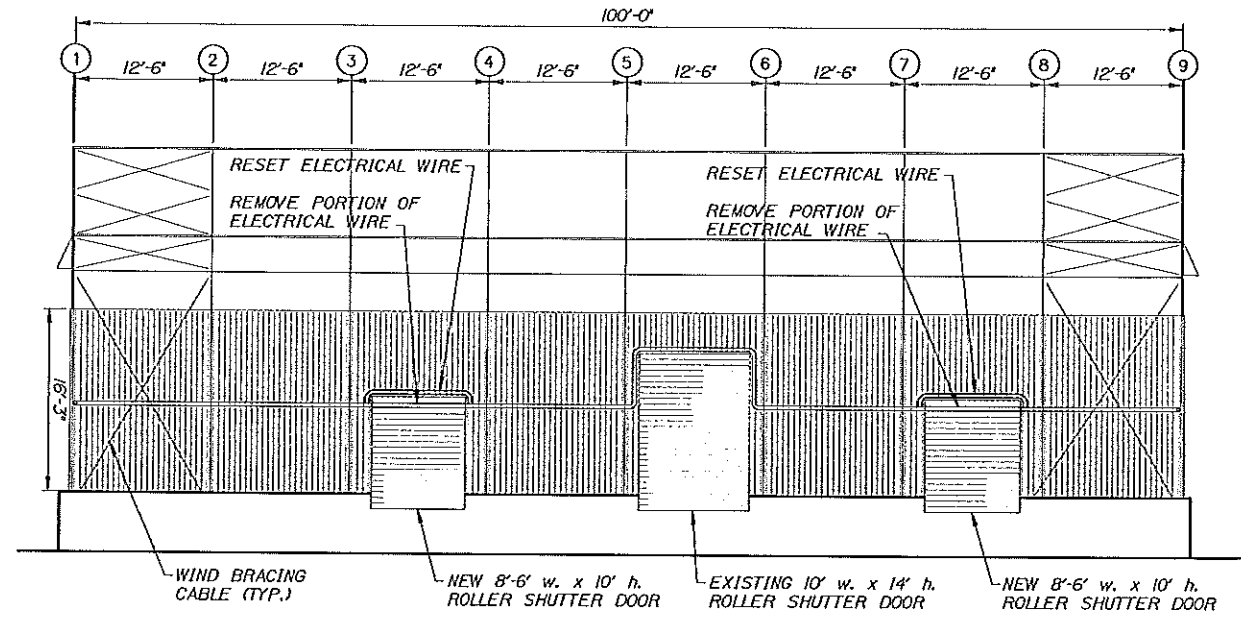
STATE OF MAINE
DEPARTMENT OF TRANSPORTATION
PROJECT NUMBER 018413.00

DATE	BY	PROJ. MANAGER	CHIEF CLERK	DATE	SIGNATURE	P.E. NUMBER	DATE
2/2/2013	HME			2/2/2013			
	RAL						

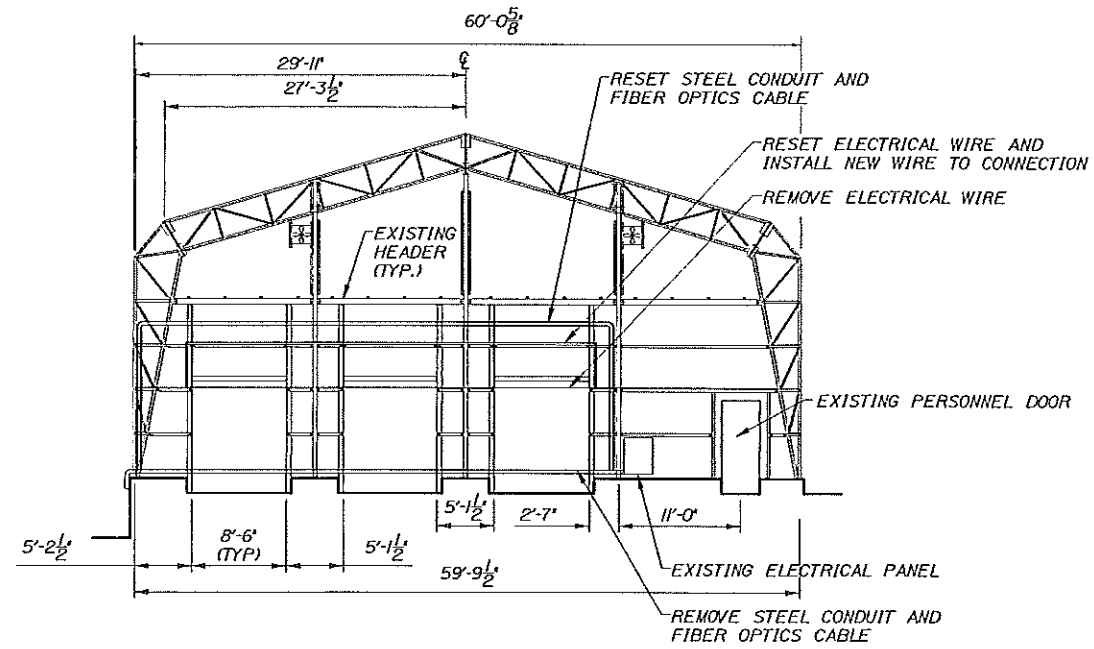
PORTLAND INTERNATIONAL
MARINE TERMINAL IMPROVEMENTS
PORTLAND
CUMBERLAND COUNTY

SHEET NUMBER
2
2 OF 7

NAME: M:\984\37075 - Maine Port Authority OnCall GEO\001-001 General Consulting - 2011-2012\Projects\08 - IRT Elmiskip Accommodations\CAD\PIR\PIR\018413.dwg DATE: Feb 01, 2013 - 3:27pm

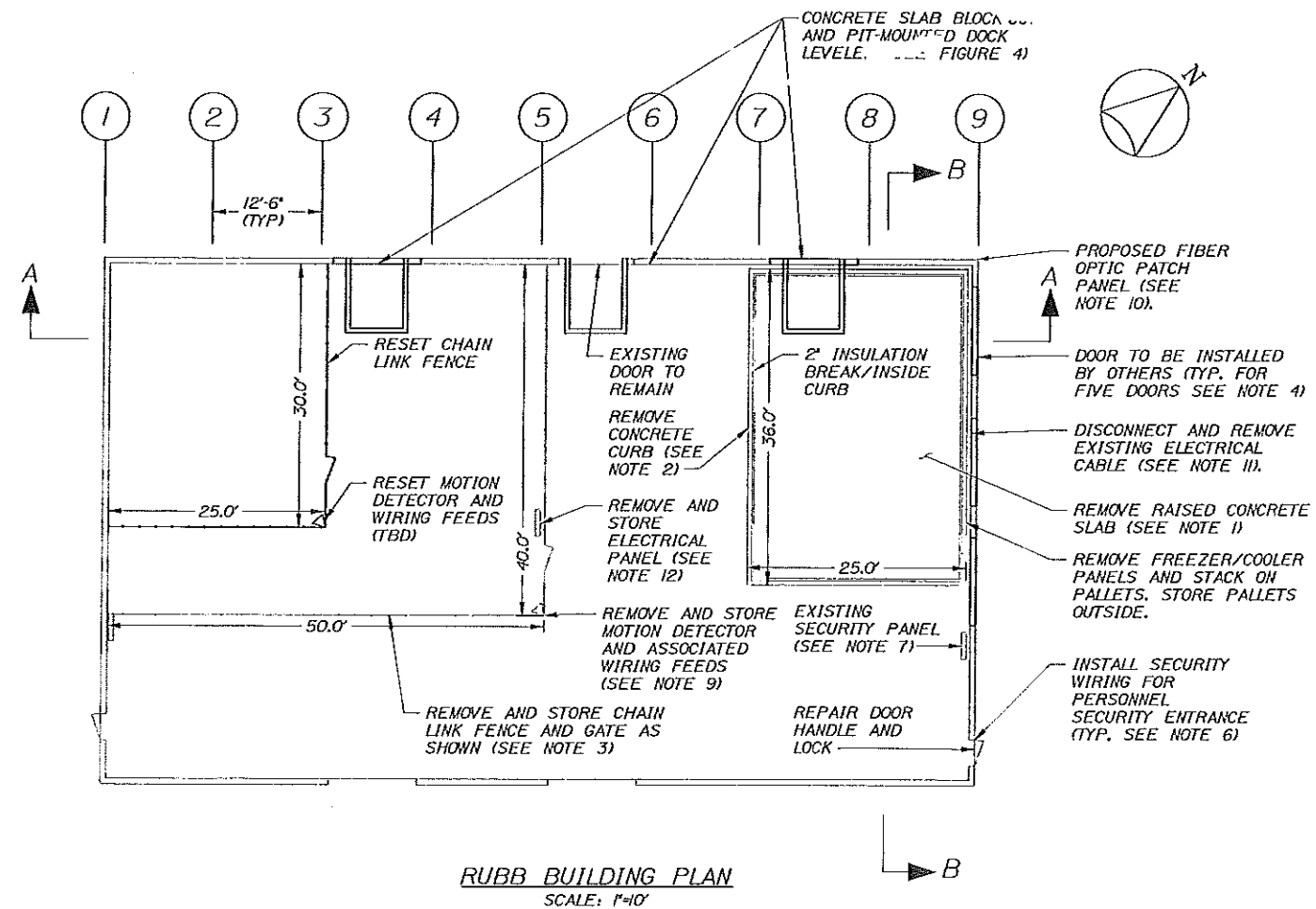


SECTION A-A
NOT TO SCALE



SECTION B-B
NOT TO SCALE

- NOTES:**
1. CONCRETE SLAB CONTAINS 5 INCHES OF CONCRETE ATOP 4 INCHES OF INSULATION THERMAL BREAK.
 2. CONCRETE CURB IS 4 INCH THICK BY 9 INCH HIGH AND ANCHORED TO FLOOR WITH REBAR. CUT BARS FLUSH WITH SLAB AND APPLY COLD-GALVANIZED COATING TO EXPOSED STEEL. GRIND SMOOTH CONCRETE SLAB.
 3. CHAIN LINK FENCE POSTS ARE SECURED TO SLAB WITH ANCHOR BOLTS.
 4. DOOR INSTALLATION WILL BE PERFORMED BY RUBB INC. OF SANFORD, ME SIMULTANEOUSLY WITH THIS PROJECT. OTHER BUILDING MODIFICATIONS INCLUDE:
 - A. FRAMING AND INSTALLATION OF FIVE ROLLER SHUTTER DOORS;
 - B. CONCRETE CURB CUTTING FOR DOORS;
 - C. INSTALLATION OF DOCK SEALS AND BUMPERS AT DOORS.
 5. ALL ELECTRICAL WIRING IS CONTAINED WITHIN FLEX TUBING AND IS ZIP-TIED TO STRUCTURE FRAME.
 6. SECURITY FEATURES AT THE TWO PERSONNEL ENTRANCES SHALL BE COMPLETED BY GALAXY. FEATURES INCLUDE PROXIMITY READERS AND ELECTRIC MAGNETIC LOCKS.
 7. DISCONNECT AND REMOVE EXISTING SECURITY SYSTEM KEYPAD AND ASSOCIATED WIRING. TURN KEYPAD OVER TO OWNER.
 8. COORDINATE FIRE ALARM SHUT DOWN WITH CITY.
 9. DISCONNECT AND REMOVE EXISTING SECURITY SYSTEM MOTION SENSORS AND ASSOCIATED WIRING. TURN SENSORS OVER TO OWNER.
 10. PROVIDE A 12-PORT FIBER OPTIC PATCH PANEL IN A NEMA 1 ENCLOSURE AT THE NORTH WALL WHERE THE EXISTING FIBER OPTIC CABLE ENTERS THE BUILDING. CUT THE EXISTING CABLE AT THE LOCATION OF THE NEW PATCH PANEL AND LEAVE 10 FEET OF SLACK CABLE. PROVIDE A NEW LENGTH OF 12-STRAND FIBER OPTIC CABLE TO BE INSTALLED BETWEEN THE NEW PATCH PANEL AND THE EXISTING FIBER TERMINATION BOX THAT IS LOCATED IMMEDIATELY BESIDE THE PERSONNEL DOOR IN THE EAST WALL. LEAVE 10-FEET FOR SLACK CABLE AT EITHER END. ROUTE THE NEW LENGTH OF FIBER OPTIC CABLE WITHIN 2-1/2" CONDUIT ALONG THE EAST WALL ABOVE THE HEIGHT OF THE NEW OVERHEAD DOORS TO BE INSTALLED UNDER THIS CONTRACT. TERMINATION AND TESTING OF THE NEW FIBER CABLE WILL BE DONE BY OTHERS UNDER SEPARATE CONTRACT WITH THE OWNER.
 11. DISCONNECT AND REMOVE EXISTING ELECTRICAL CABLE THAT PRESENTLY SERVES EXISTING RECEPTACLE OUTLETS, WHERE SUCH CABLE IS LOCATED WHERE NEW OVERHEAD DOORS ARE BEING INSTALLED UNDER THIS CONTRACT. PROVIDE NEW LENGTHS OF ELECTRICAL CABLE TO SERVE EXISTING RECEPTACLE OUTLETS BY OUTING CABLE ABOVE THE HEIGHT OF THE NEW OVERHEAD DOORS. MATCH EXISTING CABLE TYPE AND CONDUCTOR SIZE.
 12. DISCONNECT AND REMOVE EXISTING RECEPTACLE OUTLET AND ASSOCIATED WIRING. ALSO DISCONNECT AND REMOVE EXISTING SECURITY SYSTEM KEYPAD AND ASSOCIATED WIRING. TURN KEYPAD OVER TO OWNER.



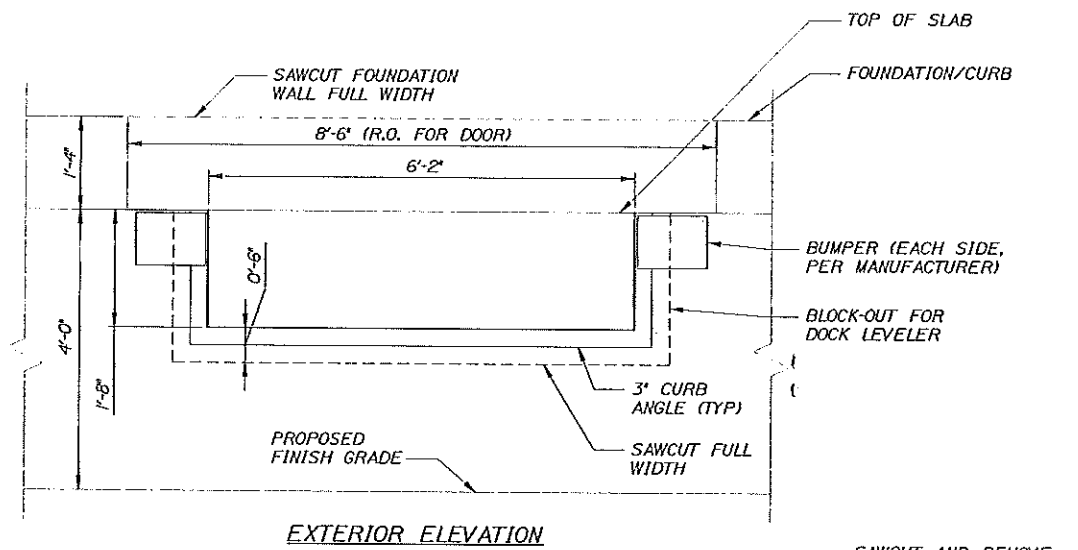
RUBB BUILDING PLAN
SCALE: 1/4"=1'-0"

DATE	BY	REVISION	SIGNATURE	P.E. NUMBER	DATE
2/2013	NAME				
2/2013	RAL				

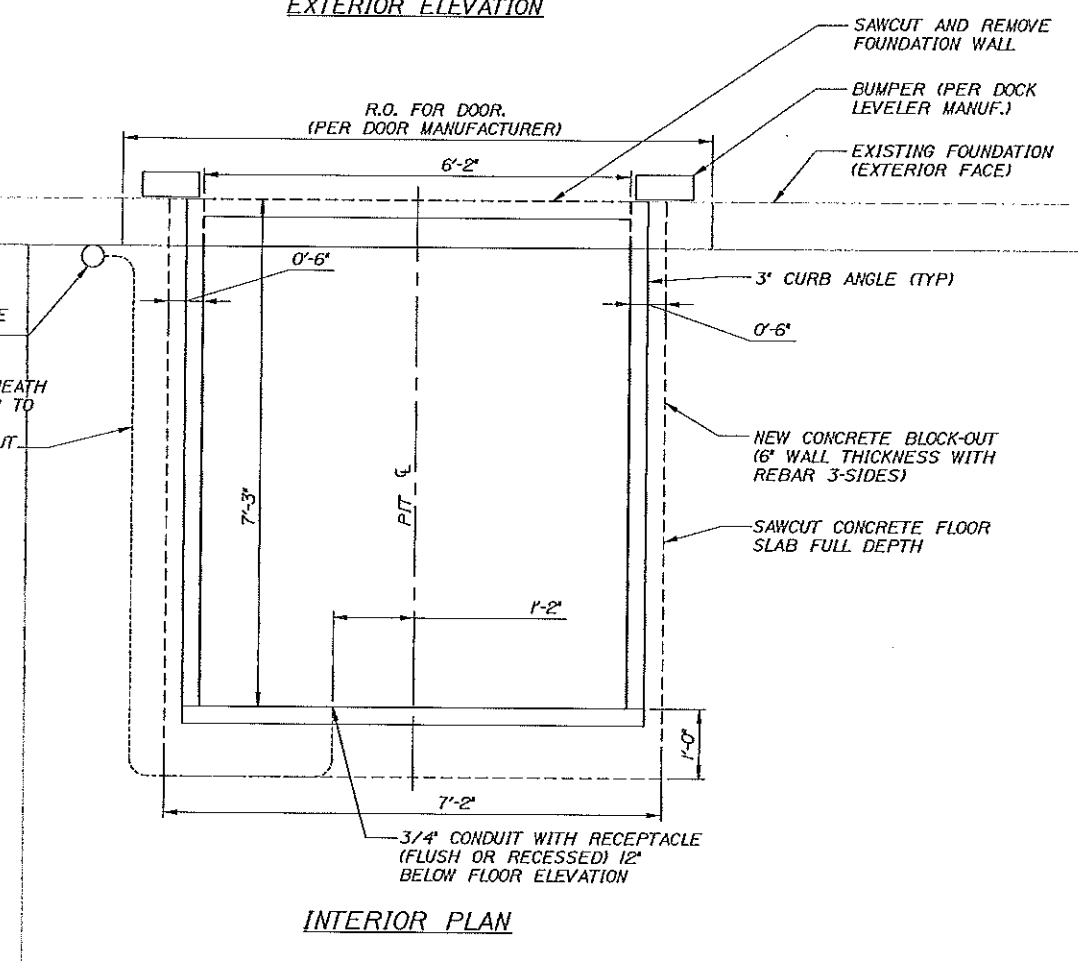
PORTLAND INTERNATIONAL
MARINE TERMINAL IMPROVEMENTS
PORTLAND CUMBERLAND COUNTY
RUBB BUILDING
MODIFICATIONS

NAME: M:\jaba\57075 - Maine Port Authority OnCall GEC\001-001 General Consulting 2011-2012\Projects\08 IRT Emaple Accummodations\CAD\PIR\08-PIR.dwg DATE: Feb. 01, 2013 - 3:43pm

NAME: M:\jahn\37075 - Maine Port Authority OnCall GEC\001-001 General Consulting 2011-2012\Project\09 INT Emakip Accommodations\CAD\WORKING-PH1.dwg DATE: Feb 04, 2013 - 7:21 am

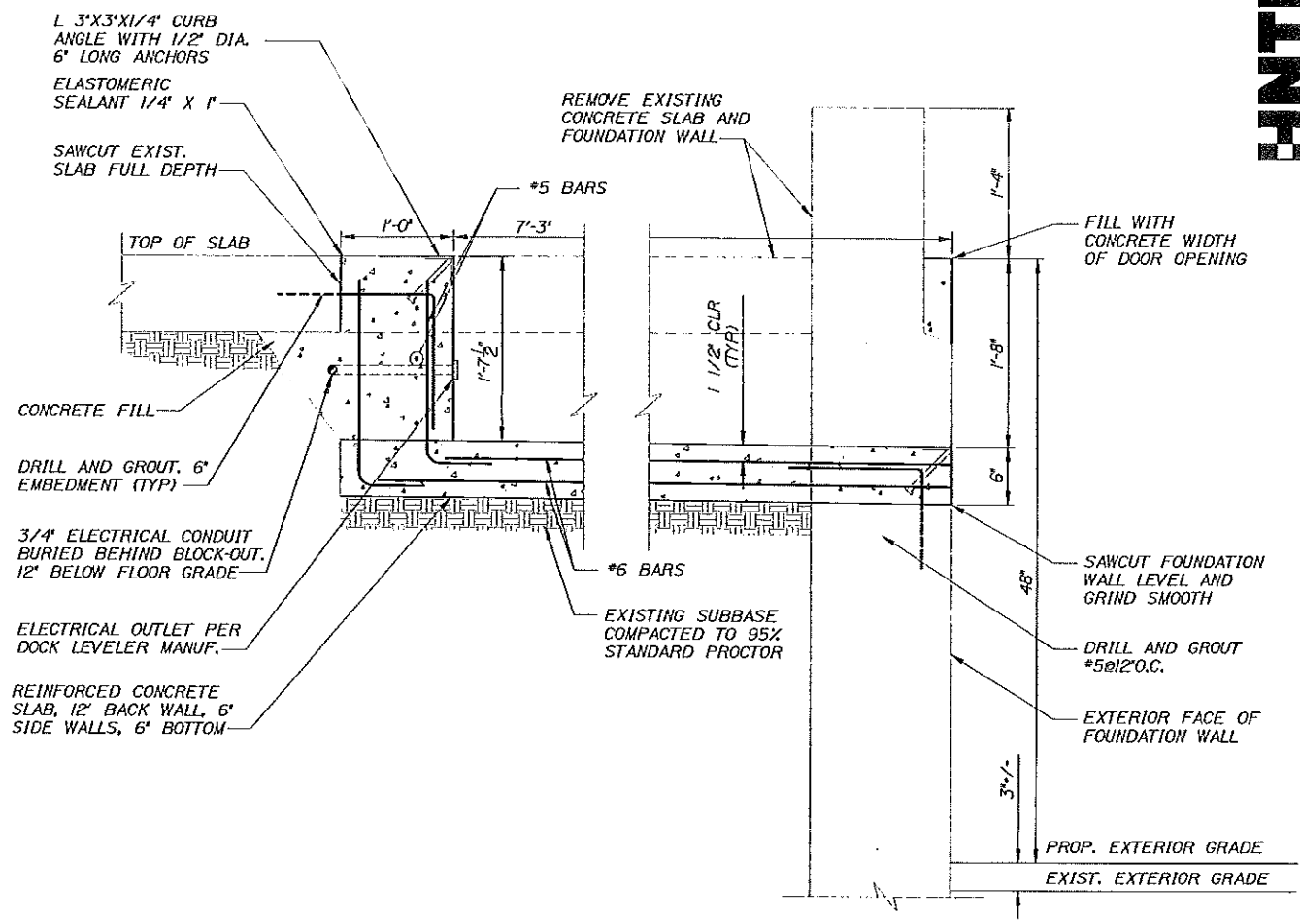


EXTERIOR ELEVATION

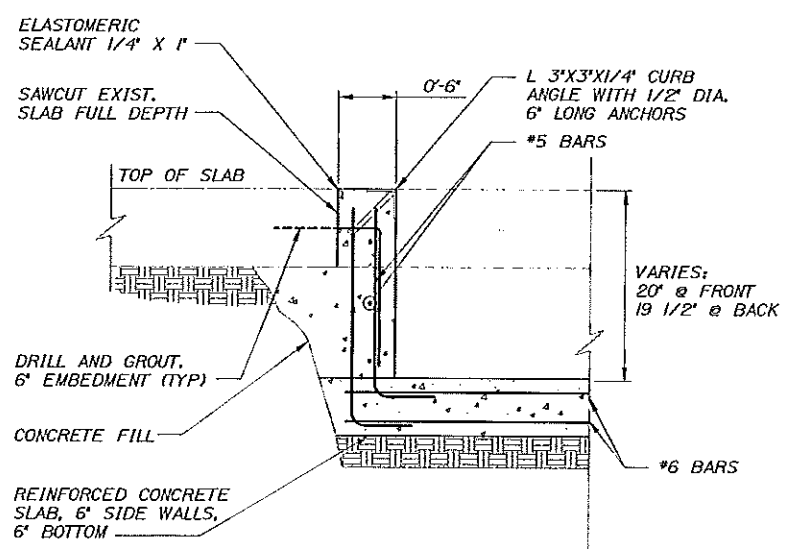


INTERIOR PLAN

CONCRETE FLOOR BLOCK-OUT DETAIL
N.T.S.



SECTION THRU 12" BACK WALL AND FLOOR
N.T.S.



SECTION THRU 6" SIDE WALL AND FLOOR
N.T.S.

HNTB

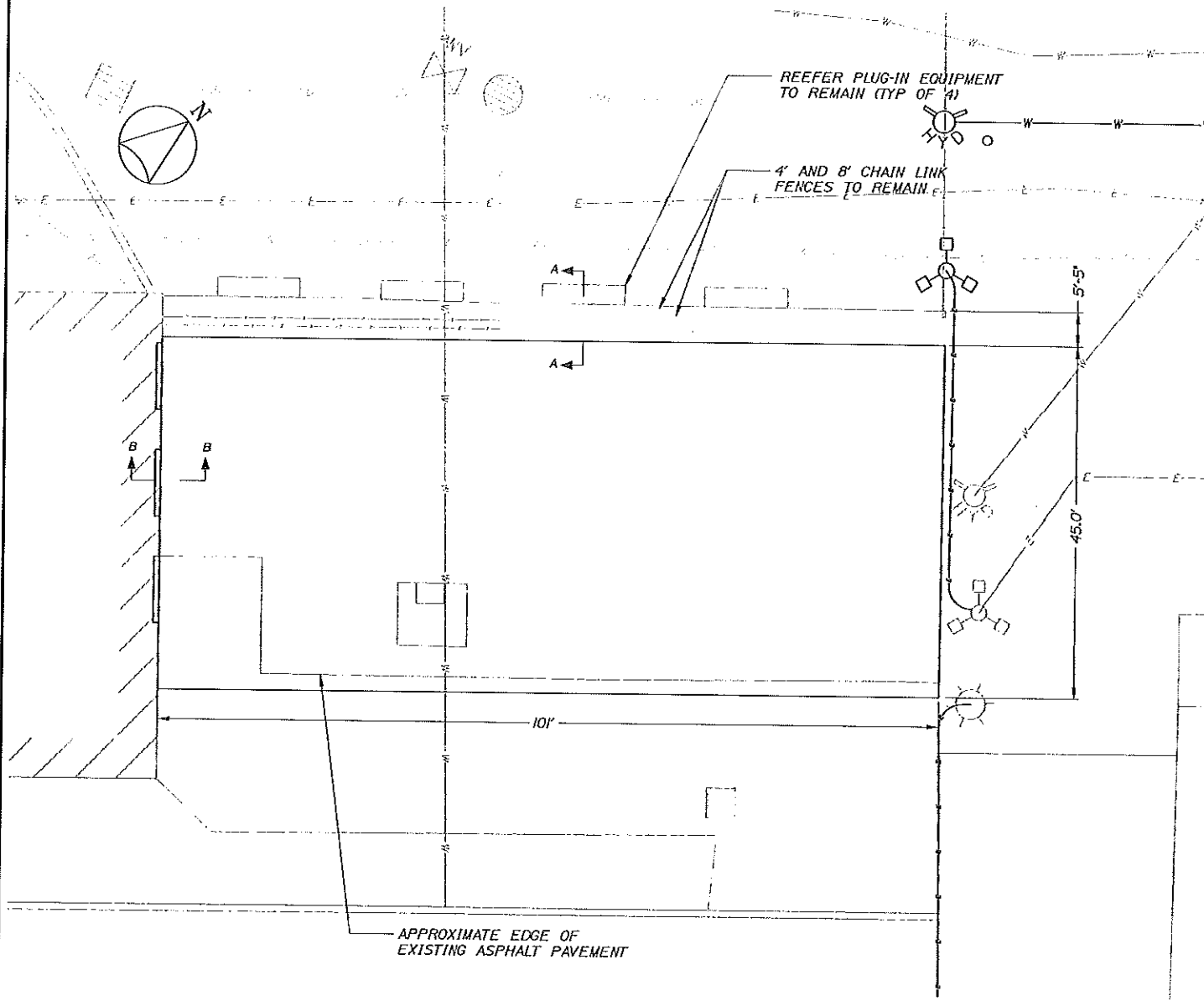
STATE OF MAINE
DEPARTMENT OF TRANSPORTATION
PROJECT NUMBER 017820.00
PIN
018413.00

PROJ. MANAGER	DATE	BY	DATE
DESIGN-DRAWN	2/20/13	RAJ	2/20/13
CHECKED			
DESIGN-REVIEWED			
DESIGN-DETAILS			
REVISIONS 1			
REVISIONS 2			
REVISIONS 3			
REVISIONS 4			
FIELD CHANGES			

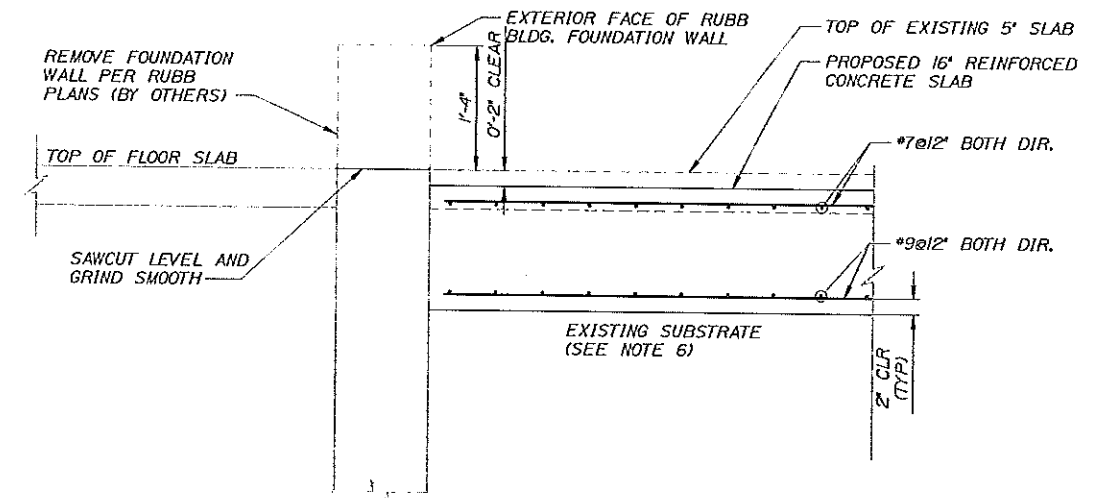
PORTLAND INTERNATIONAL
MARINE TERMINAL IMPROVEMENTS
PORTLAND CUMBERLAND COUNTY
CONCRETE FLOOR
MODIFICATIONS

SHEET NUMBER
4
4 OF 7

NAME: M:\Users\ST075 - Maine Port Authority OnCall_GEC\001-001 General Consulting 2011-2012\Projects\09 INT Crankp Accommodations\CAD\WORKING-PH1.dwg DATE: Feb 04, 2013 -- 7:50am

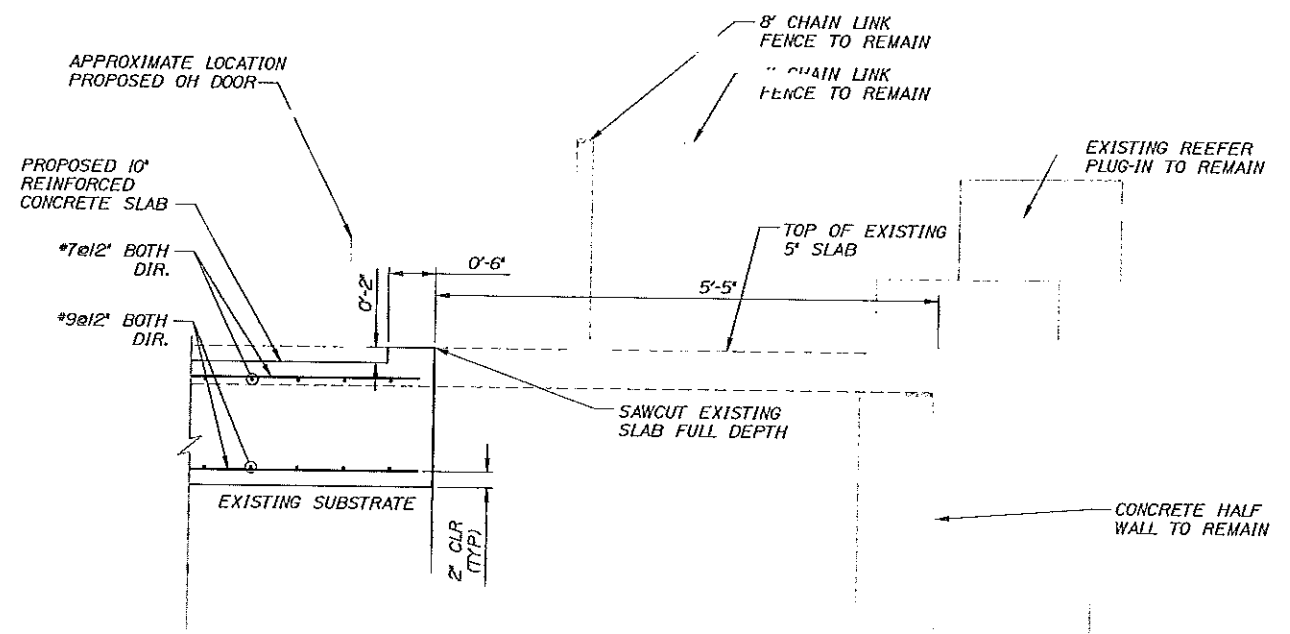


CONCRETE SLAB PLAN
SCALE: 1/4"



- NOTES:**
1. CONCRETE MAINDOT LP. WITH CORROSION INHIBITOR AT RATE OF 5 GAL/CY.
 2. ALL BARS 60 KSI AND EPOXY COATED.
 3. 2' CLEAR U.O.N.
 4. SAWCUT TOP 1 1/2" IN 10'X10' GRID FOLLOWING CONCRETE PLACEMENT. FILL SAWCUT WITH ELASTOMERIC CONCRETE.
 5. SLAB ELEVATIONS T.B.D. DRAIN TOWARD EXISTING CATCH BASIN.
 6. RESIDENT TO DETERMINE IF EXISTING SUBSTRATE SOILS SUITABLE. CONTRACTOR MAY BE REQUIRED TO EXCAVATE MATERIAL AND REPLACE WITH CLEAN GRAVEL AND COMPACT TO 95% STANDARD PROCTOR.

SLAB SECTION B-B
SCALE: 1/4"



SLAB SECTION A-A
SCALE: 1/4"



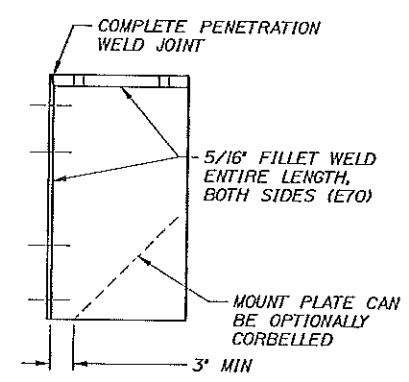
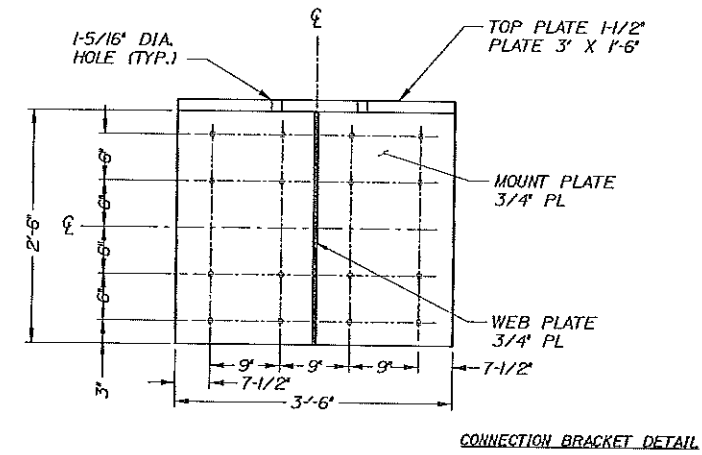
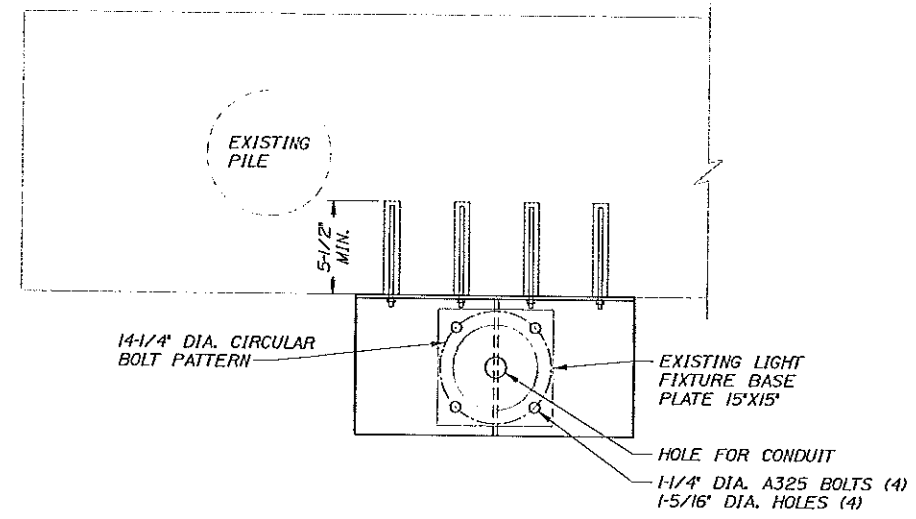
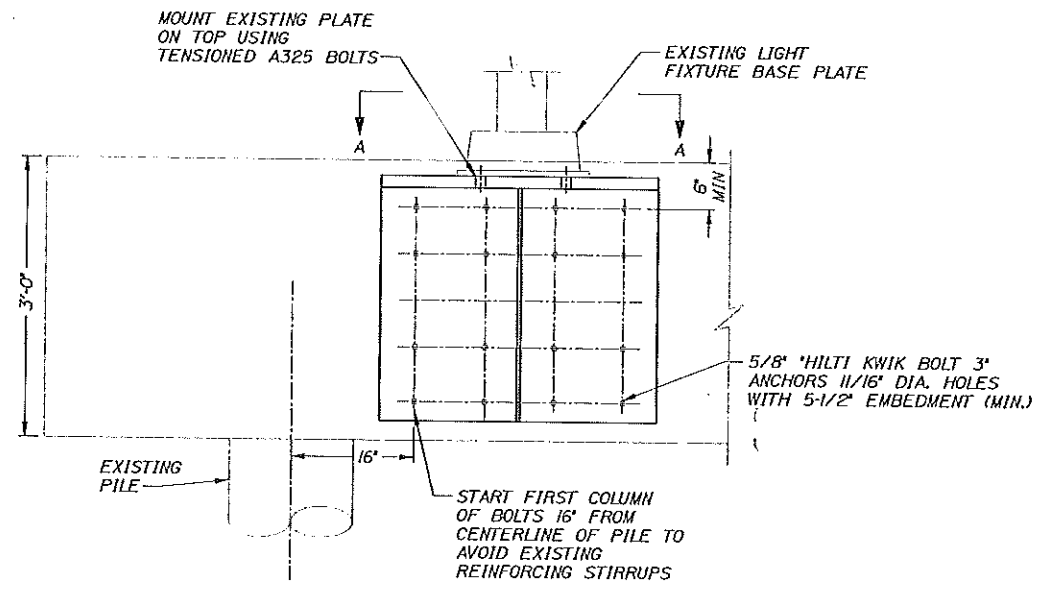
STATE OF MAINE
DEPARTMENT OF TRANSPORTATION
PROJECT NUMBER 017820.00
PIN 0184413.00

PROJ. MANAGER	CHAS R. MORRIS	DATE	BY
DESIGN-DETAILS	NAME	2/2/2013	NAME
CHECK-REVIEW	CRM	2/2/2013	RAJ
DESIGN-DETAILS	NAME		SIGNATURE
REVISIONS 1	NAME		P.E. NUMBER
REVISIONS 2	NAME		DATE
REVISIONS 3	NAME		
REVISIONS 4	NAME		
FIELD CHANGES	NAME		

PORTLAND INTERNATIONAL
MARINE TERMINAL IMPROVEMENTS
PORTLAND CUMBERLAND COUNTY
CONCRETE SLAB DETAILS

SHEET NUMBER
5
5 OF 7

NAME: M:\job\57075 - Maine Port Authority OnCall BEC\01-001 General Consulting 2011-2012\Projects\09 INT Elmko Accommodations\CAD\PIR\Kwik-P11.dwg DATE: Feb 04, 2013 - 7:51am



STEEL FRAME ANCHORAGE DETAIL
NOT TO SCALE

- NOTE:
1. ALL WELDS TO BE TO KSI ELECTRODES.
 2. ALL PLATES TO BE 50 KSI STEEL.
 3. ALL STEEL SHALL BE HOT DIPPED GALVANIZED IN ACCORDANCE WITH ASTM A153.
 4. HILTI KWIK BOLTS SHALL BE STAINLESS STEEL.

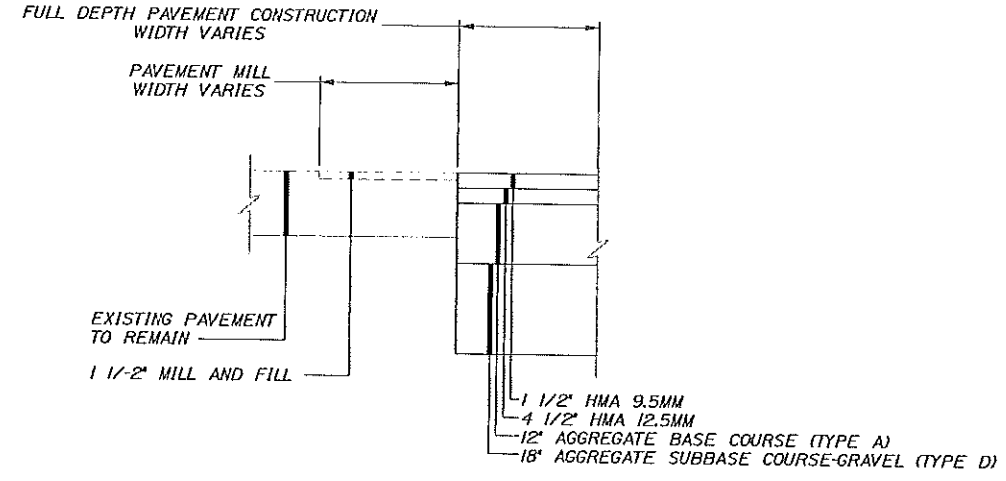
HNTB

STATE OF MAINE
DEPARTMENT OF TRANSPORTATION
PROJECT NUMBER 017820.00
PIN
0184413.00

PROJ. MANAGER	DATE	BY	REVISION
CRAIG R. MORIN	2/2/2013	RAC	DESIGN-REVIEWED
	2/2/2013		DESIGN-REVIEWED
			DESIGN-DETAILS
			REVISIONS 1
			REVISIONS 2
			REVISIONS 3
			REVISIONS 4
			FIELD CHANGES

PORTLAND INTERNATIONAL
MARINE TERMINAL IMPROVEMENTS
PORTLAND
CUMBERLAND COUNTY
LIGHT POLE ANCHORAGE

SHEET NUMBER
6



TYPICAL PAVEMENT SECTION
NOT TO SCALE

HNTB

STATE OF MAINE
DEPARTMENT OF TRANSPORTATION
PROJECT NUMBER 017820.00
PIN
018413.00

PROJ. MANAGER	CRAG R. MORIN	BY	DATE
DESIGN-DETAILED	HME	HME	2/2013
CHECKED-REVIEWED	CRM	RAL	2/2013
DESIGN-DETAILED2	-	-	-
DESIGN-DETAILED3	-	-	-
REVISIONS 1	-	-	-
REVISIONS 2	-	-	-
REVISIONS 3	-	-	-
REVISIONS 4	-	-	-
FIELD CHANGES	-	-	-

PORTLAND INTERNATIONAL
MARINE TERMINAL IMPROVEMENTS
PORTLAND CUMBERLAND COUNTY
MISCELLANEOUS DETAILS

SHEET NUMBER
7 OF 7

2

SIGNATURE
P.E. NUMBER
DATE