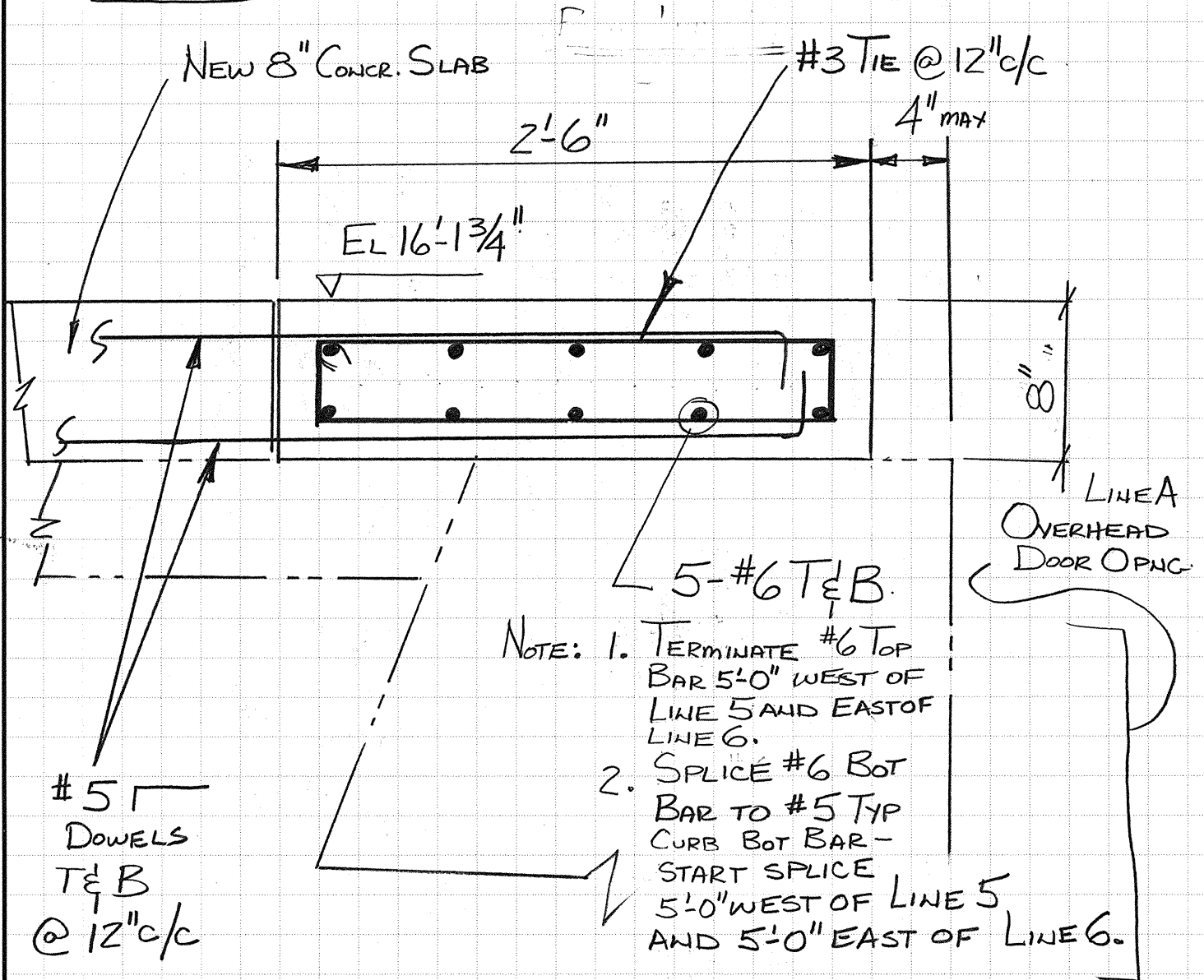


Neill and Gunter

DESIGN AND CONSULTING ENGINEERS

JOB NO. 25760 FILE NO. 25760/2.1
 JOB TITLE PORTLAND INT. MAR. TERM. - RUBB. BLDG. FDN
 CLIENT CITY OF PORTLAND
 PREPARED H. OLIVE DATE Mar 65 CHECKED DATE
 SCALE SHEET OF

LINES A&1 - CURB REINFORCEMENT AT DOOR OPENINGS



- NOTE:
1. TERMINATE #6 TOP BAR 5'-0" WEST OF LINE 5 AND EAST OF LINE 6.
 2. SPLICE #6 BOT BAR TO #5 TYP CURB BOT BAR - START SPLICE 5'-0" WEST OF LINE 5 AND 5'-0" EAST OF LINE 6.
 3. APPLY SAME TO MAIN DOOR ON LINE 1 EXCEPT CARRY BARS 5'-0" PAST DOOR OPENINGS BEFORE TERMINATING TOP BARS & SPLICING BOT BARS.

