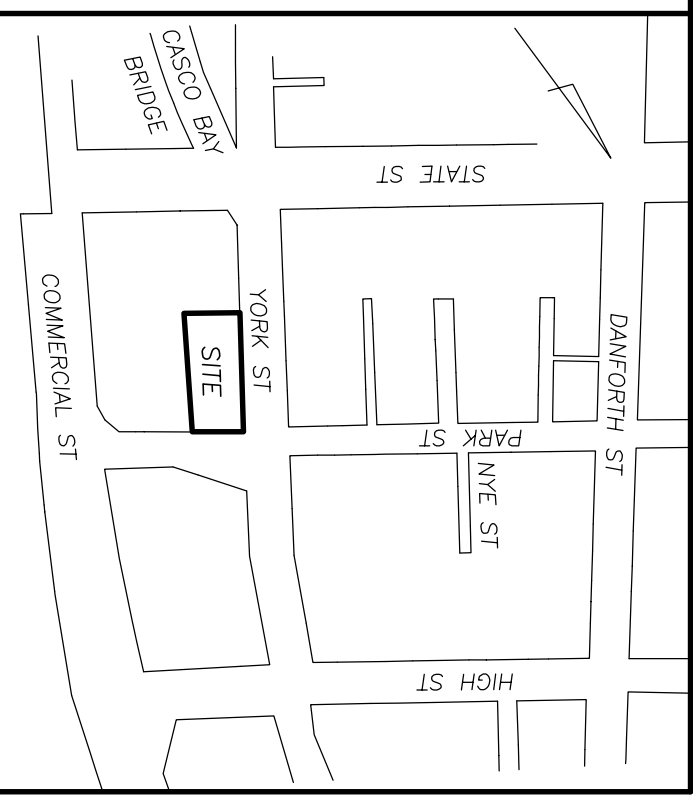
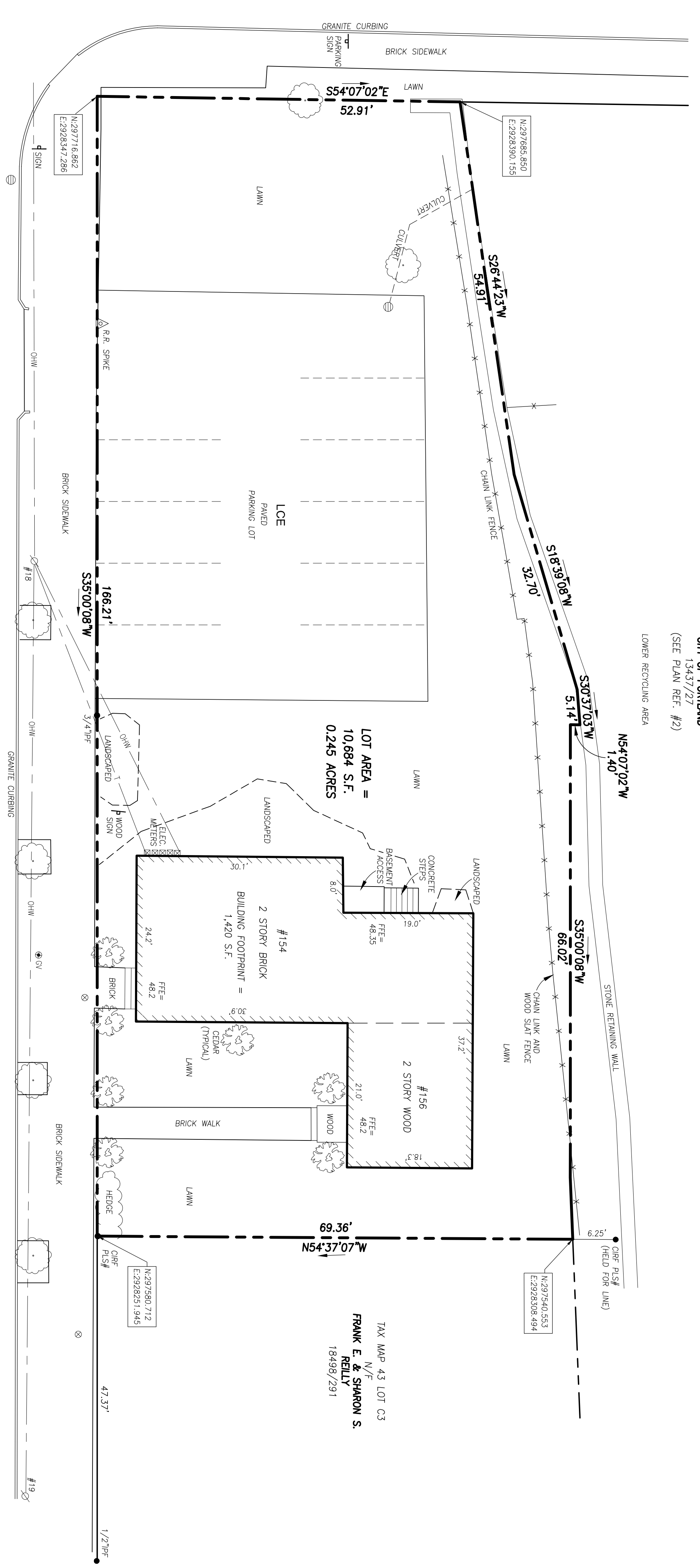


- LEGEND**
- IRON PIPE OR ROD FOUND
  - UTILITY POLE
  - MANHOLE
  - ELECTRIC METER
  - SIGN
  - CATCH BASIN
  - WATER VALVE OR SHUTOFF
  - GAS VALVE
  - DECIDUOUS TREE
  - CONIFEROUS TREE
  - FENCE
  - CURB
  - OVERHEAD WIRES
  - FINISHED FLOOR ELEVATION
  - NOW OR FORMERLY
  - DEED BOOK AND PAGE
  - LIMITED COMMON ELEMENT



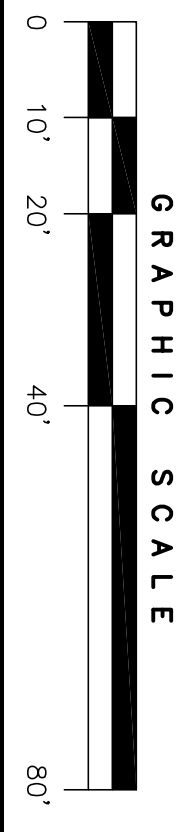
**PARK STREET**  
PAVED - PUBLIC - VARIABLE WIDTH



**YORK STREET**  
PAVED - PUBLIC - VARIABLE WIDTH

**GENERAL NOTES**

1. OWNER OR RECORD: K&L PROPERTIES, LLC  
TAX MAP 43 BLOCK C LOT 4  
CCRD BOOK 26033, PAGE 212
2. BEARINGS, COORDINATES AND ELEVATIONS ARE BASED ON THE CITY OF PORTLAND OFFICIAL CONTROL POINTS:  
CITY POINT 1124-27-1281  
N:297716.862  
E:292834.7266  
ELEVATION = 31.39'  
MNON @ SW COR. HIGH & YORK STREETS  
CITY POINT 1124-27-1282  
N:297384.677  
E:2928033.77  
MNON @ SW COR. STATE & YORK STREETS



**PLAN REFERENCES**

1. CONDOMINIUM PLAT AT 133 YORK STREET, PORTLAND, MAINE MADE FOR JOE RYAN REAL ESTATE BY OWEN HASKELL, INC. DATED OCTOBER 19, 2015 (2015-0289)
2. LAND IN PORTLAND, MAINE GUILFORD TRANSPORTATION INDUSTRIES INC. TO BRIDGEPORT ASSOCIATES BY DANIEL DALTONSO PLS DATED APRIL 30, 1993 REV. THRU JULY 27, 1994 AND RECORDED IN C.C.R.D. PLAN BOOK 194 PAGE 294

**CERTIFICATE**

OWEN HASKELL, INC. HEREBY CERTIFIES THAT THIS PLAN IS BASED ON, AND THE RESULT OF, AN ON THE GROUND FIELD SURVEY AND THAT TO THE BEST OF OUR KNOWLEDGE, INFORMATION AND BELIEF IT CONFORMS TO THE BOARD OF LIENSURE FOR PROFESSIONAL LAND SURVEYORS CURRENT STANDARDS OF PRACTICE, WITH THE EXCEPTION OF WARNERS NOT SET AT ALL CORNERS.

DATE \_\_\_\_\_ RANDY R. LOUBIER, PLS NO. 2407

**P R E L I M I N A R Y**

**CONDOMINIUM PLAT  
"YORK HOUSE CONDOMINIUM"  
#154 & #156 YORK STREET, PORTLAND, MAINE  
MADE FOR RECORD OWNER  
K & L PROPERTIES, INC.  
4 SEA STAR LANE, CAPE ELIZABETH, MAINE**

<b>OWEN HASKELL, INC.</b> PROFESSIONAL LAND SURVEYORS 390 U.S. ROUTE ONE, FALMOUTH, ME 04105 (207) 774-0424	
Drawn By: T&K	Date: _____
Trace By: T&K	Scale: APRIL 28, 2016
Check By: RRL	Job No.: 2016-033P
Book No.: 1143	Drawg. No.: 1