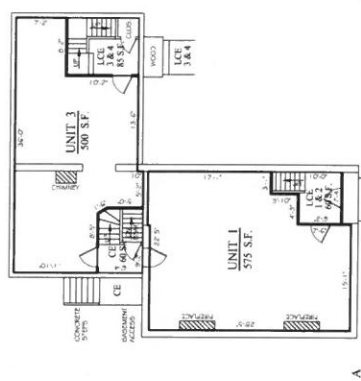
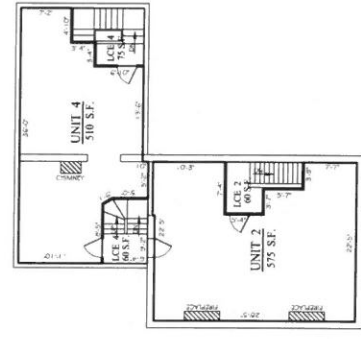


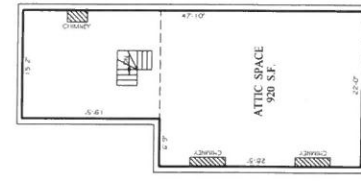
BASEMENT



FIRST FLOOR

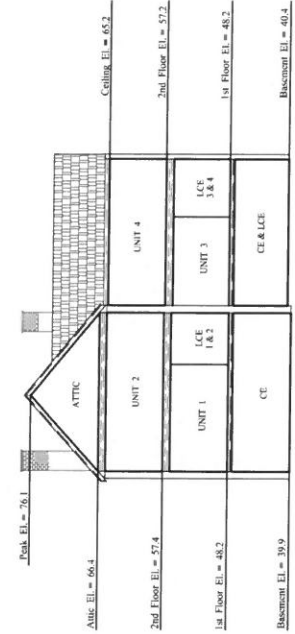


SECOND FLOOR



THIRD FLOOR

YORK STREET
 VERTICAL BOUNDARY



SECTION A-A
 YORK STREET
 HORIZONTAL BOUNDARY
 NOTE: ELEVATIONS BASED ON CITY DATUM

LEGEND:
 CE COMMON ELEMENT
 LCE LIMITED COMMON ELEMENT
 UNIT BOUNDARY



HORIZONTAL & VERTICAL BOUNDARIES
YORK HOUSE CONDOMINIUM
 #154 & #165 YORK STREET, PORTLAND, MAINE
 MADE FOR RECORD BY
K & L PROPERTIES, INC.
 4 SEA STAR LANE, CAPE ELIZABETH, MAINE

OWEN HASKELL, INC.
 300 U.S. BOYDE DR., BALDWIN, ME 04415 (207) 724-0424

| | | | |
|-----------|-----|-----------|----------------|
| Drawn By | ED | Date | APRIL 28, 2016 |
| Trace By | JW | Scale | 2016-09-30 |
| Check By | ED | Sheet No. | 2 OF 2 |
| Issue No. | 001 | Proj. No. | 1707-0-11 |

JOHN W. SWAN, P.L.C. / ODR