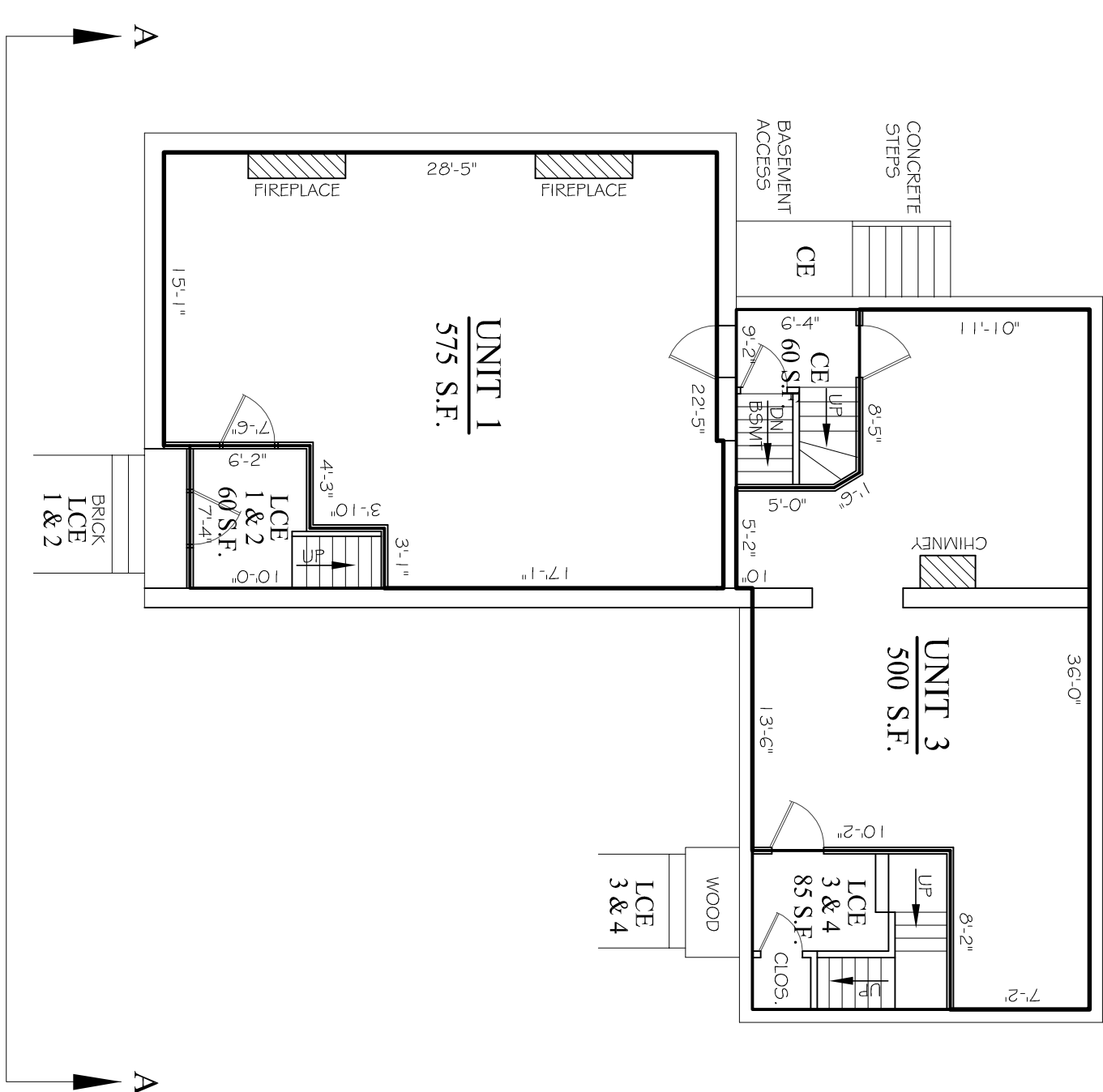
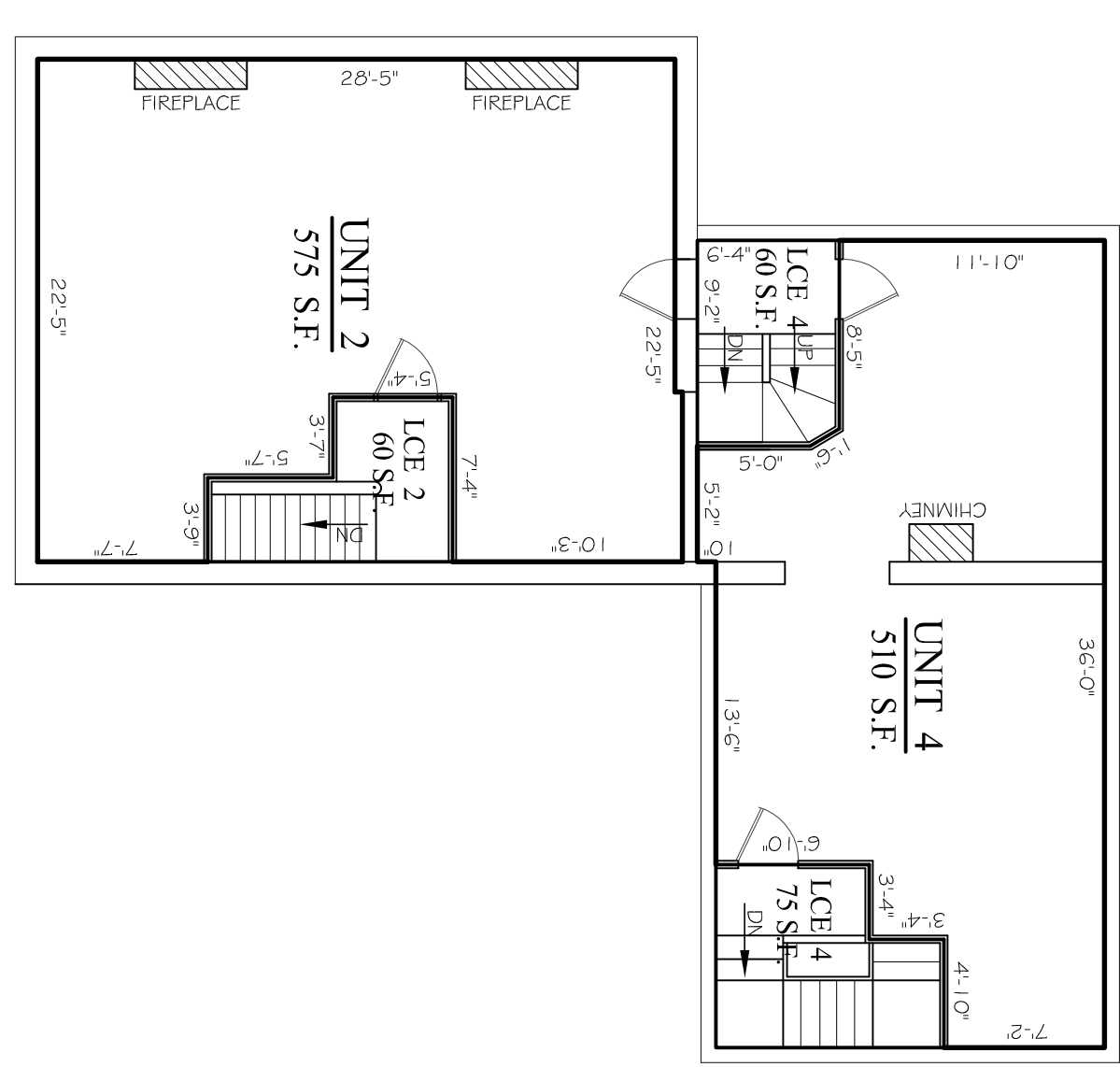


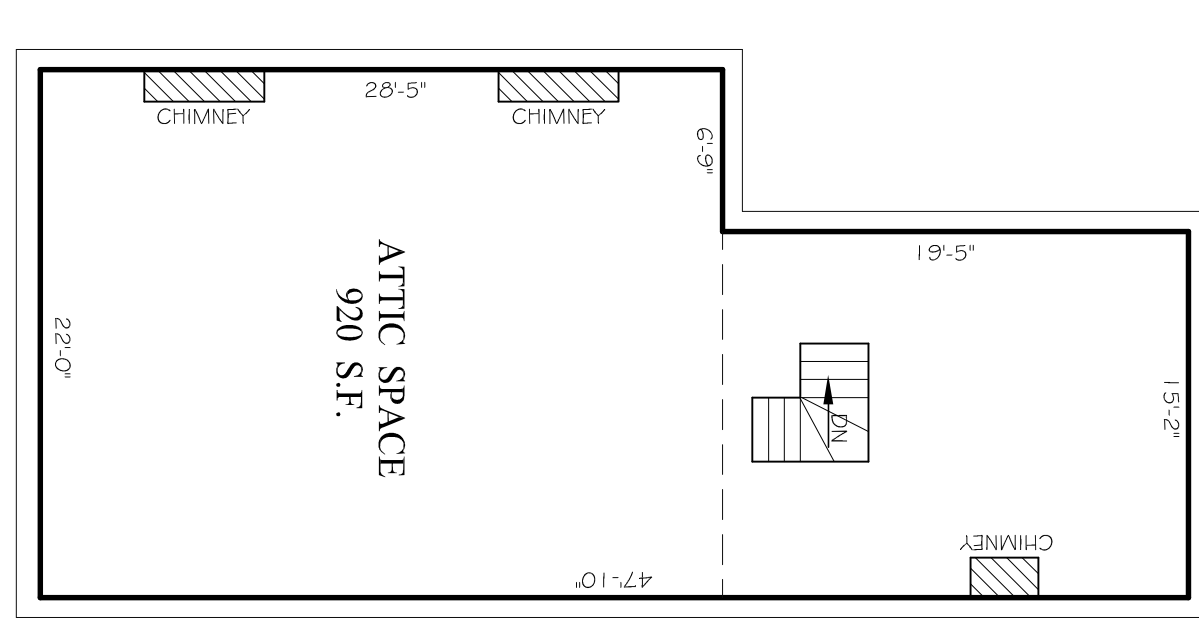
**BASEMENT**



**FIRST FLOOR**

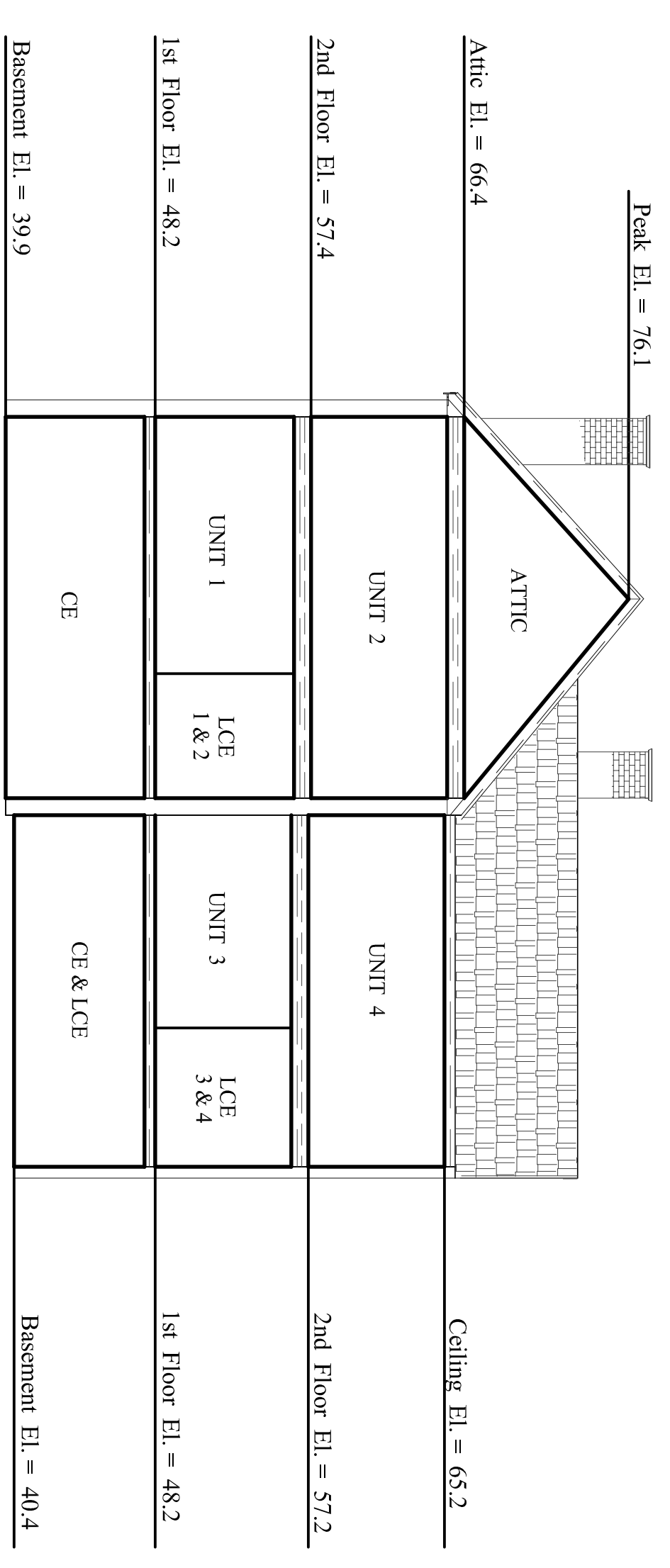


**SECOND FLOOR**



**THIRD FLOOR**

← YORK STREET →  
**VERTICAL BOUNDARY**

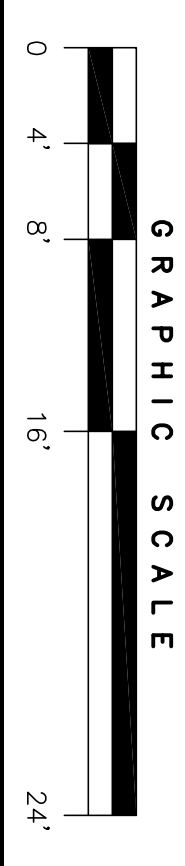


**SECTION A-A**

← YORK STREET →

**HORIZONTAL BOUNDARY**

NOTE: ELEVATIONS BASED ON CITY DATUM



**GRAPHIC SCALE**

- LEGEND:**
- CE COMMON ELEMENT
  - LCE LIMITED COMMON ELEMENT
  - UNIT BOUNDARY

JOHN W. SWAN, PLS. #1038

**HORIZONTAL & VERTICAL BOUNDARIES**  
**"YORK HOUSE CONDOMINIUM"**  
 #154 & #156 YORK STREET, PORTLAND, MAINE  
 MADE FOR RECORD OWNER  
**K & L PROPERTIES, INC.**  
 4 SEA STAR LANE, CAPE ELIZABETH, MAINE

**OWEN HASKELL, INC.**  
 PROFESSIONAL LAND SURVEYORS  
 390 U.S. ROUTE ONE, PALMOUTH, ME 04106 (207) 774-0424

Drawn By	EB	Date		Job No.	
Trace By	JLW	APRIL 28, 2016		2016-093P	
Check By	EB		Scale	Dwg. No.	
Book No.	FILE		1/8" = 1'	2 OF 2	