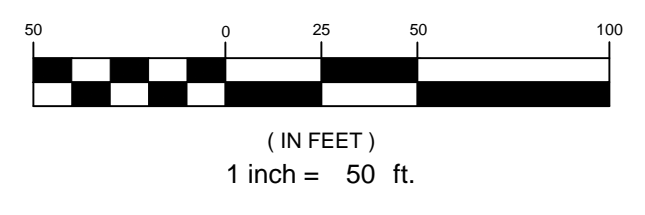


**PLAN REFERENCES**

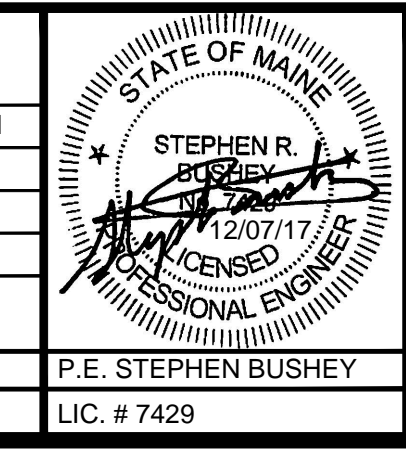
- BOUNDARY AND TOPOGRAPHIC SURVEY WEST COMMERCIAL STREET PORTLAND, CUMBERLAND COUNTY, MAINE MADE FOR HNTB AND THE MAINE DEPARTMENT OF TRANSPORTATION BY OWEN HASKELL, INC. DATED APRIL 4, 2014.
- PLAN TITLED "STATE OF MAINE DEPARTMENT OF TRANSPORTATION RIGHT OF WAY MAP" "LAND ACQUISITIONS" BY OWEN HASKELL INC. DATED APRIL 4, 2014.
- PLAN SET TITLED "STATE OF MAINE DEPARTMENT OF TRANSPORTATION" CITY OF PORTLAND, CUMBERLAND COUNTY, PORTLAND INTERNATIONAL MARINE TERMINAL - EXISTING LAYDOWN AND CONNECTING CORRIDOR CONNECTION WIN: 022809.20
- PORTLAND HARBOR, PORTLAND, ME AFTER DREDGE SURVEY - 35 FOOT CHANNEL AND TURNING BASINS BY THE U.S. ARMY CORPS OF ENGINEERS. SHEETS V-101 THROUGH V-104, DATED APRIL 16, 2014.

**NOTE**

THE APPLICANT IS REQUESTING AFTER - THE FACT APPROVAL FOR CLEARING, GROUND STABILIZATION, INITIAL WALL REPAIRS AND SITE USE FOR PARKING AND STORAGE OF BOATS, TRAILERS, EMPLOYEE VEHICLES (NO OVERNIGHT) AND RELATED MATERIALS ANCILLARY TO NEW YARDS BUSINESS OPERATIONS IN ADVANCE OF THE AMENDED PHASE III APPROVAL IN ACCORDANCE WITH SECTION 14-532 (b)2 AND (a)3 OF THE CODE



REV	DATE	DESCRIPTION	REVISIONS
5	12.07.17	REVISED FOR RESUBMISSION TO HARBOR COMMISSION	
4	10.26.17	REVISED FOR DEP NRPA AMENDMENT SUBMISSION	
3	11.10.15	REVISED FINAL PLAN SUBMISSION	
2	09.04.15	FINAL PLAN SUBMISSION TO CITY OF PORTLAND	
1	06.15.15	PRELIMINARY PHASE III AMENDED SITE PLAN TO CITY OF PORTLAND	



PROJECT  
**CANAL LANDING AMENDED SITE PLAN**

SHEET TITLE  
**EXISTING CONDITIONS PLAN**

CLIENT  
**CANAL LANDING LLC  
400 WEST COMMERCIAL STREET  
PORTLAND, ME 04101**

**STANTEC CONSULTING SERVICES INC.**  
482 PAYNE ROAD  
SCARBOROUGH, ME 04074  
WWW.STANTEC.COM

DESIGNED: SRB DATE: OCTOBER 2017  
CHECKED: SRB SCALE: 1" = 50'  
FILE NAME: 3091.04 - EXISTING CONDITIONS SHEET  
JOB NO. 195350129  
**C-1.3**