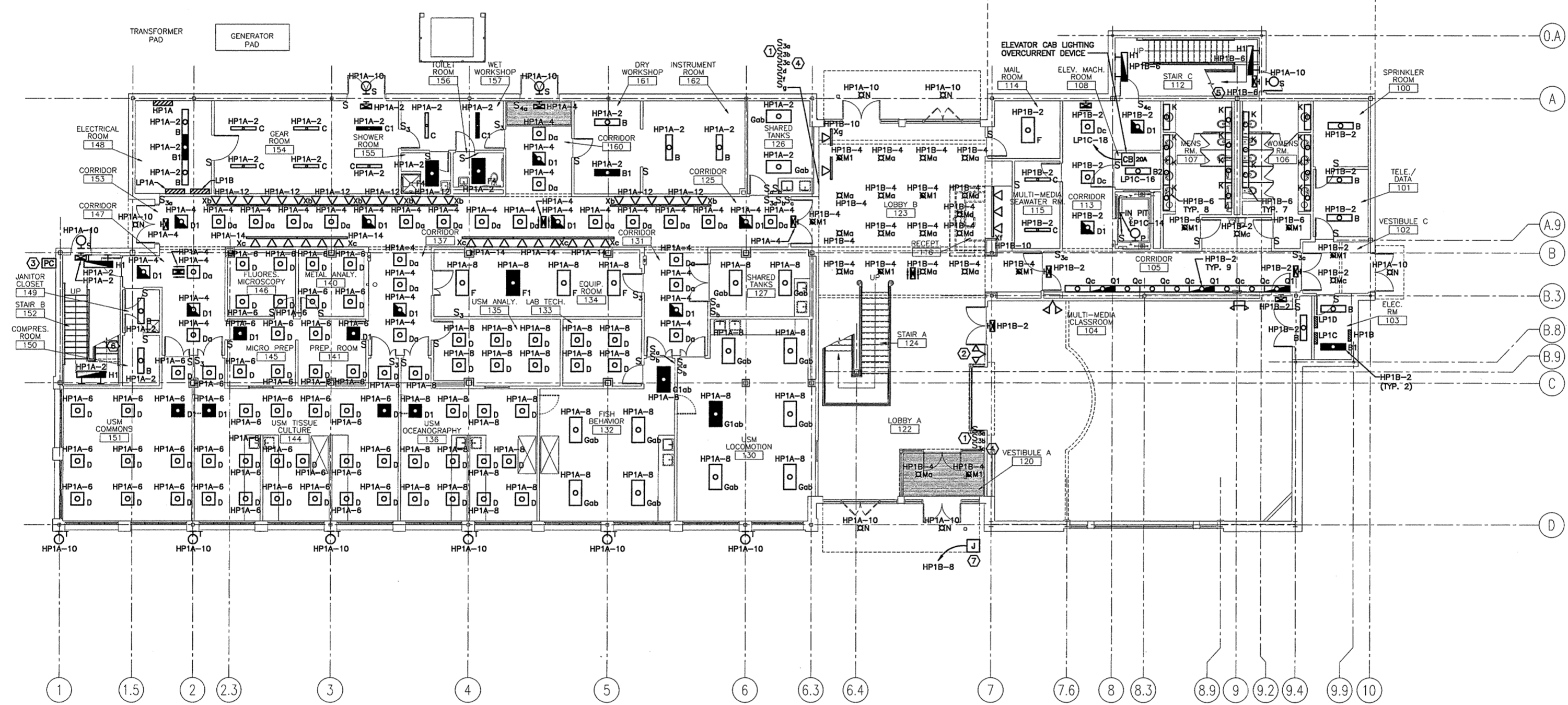


NOTE:

1. SEE SHEET E-001 FOR LEGEND AND GENERAL NOTES.

KEYED NOTES:

- ① THIS SWITCH CONTROLS HIGH BAY TYPE "R" & "R2" LIGHTS IN LOBBY A. SEE EL103 FOR LIGHT FIXTURE LOCATIONS.
- ② REMOTE HEADS ARE POWERED FROM BATTERY UNIT ON STAIR A LANDING. SEE EL102 FOR LOCATION.
- ③ PHOTOCELL FOR CONTROL OF ALL EXTERIOR BUILDING MOUNTED AND SITE LIGHTING. SEE EL601 FOR LIGHTING CONTACTOR SCHEMATIC.
- ④ THIS SWITCH CONTROLS PENDANT MOUNTED TYPE "2" LIGHTS IN LOBBY A. SEE EL103 FOR LIGHT FIXTURE LOCATIONS.
- ⑤ PROVIDE A TYPE "H1" FIXTURE UNDER STAIR LANDING ON WALL NEAR EXTERIOR DOOR. CIRCUIT HP1B-6.
- ⑥ PROVIDE A TYPE "H1" FIXTURE UNDER STAIR LANDING TO LIGHT AREA UNDER STAIRS. CIRCUIT HP1A-2.
- ⑦ PROVIDE POWER TO SIGN. CONFIRM REQUIREMENTS WITH OWNER PRIOR TO INSTALLING.



0	ISSUED FOR CONSTRUCTION	10-23-03
REV.	DESCRIPTION	DATE

ISSUED FOR CONSTRUCTION
10-23-03

CURRENT ISSUE STATUS:

SMRT ARCHITECTURE ENGINEERING PLANNING
 144 Fore Street/P.O. Box 618
 Portland, Maine 04104
 Tel: (207) 773-3846
 Fax: (207) 773-1070

THE GULF OF MAINE RESEARCH INSTITUTE
 PORTLAND, MAINE

FIRST FLOOR LIGHTING PLAN

SHEET TITLE:	FIRST FLOOR LIGHTING PLAN	
SCALE:	1/8" = 1'-0"	DATE: 10-23-03
PROJECT MANAGER:	DRL	GRAPHIC SCALE: 0" = 1'
JOB CAP/DRAWN:	SDL/LAM	
A/E OF RECORD:	JPP	SHEET No.
SMRT CAD FILE:	EL101-03034	EL101
PROJECT No.	03034	

A1 FIRST FLOOR PLAN

1/8" = 1'-0"