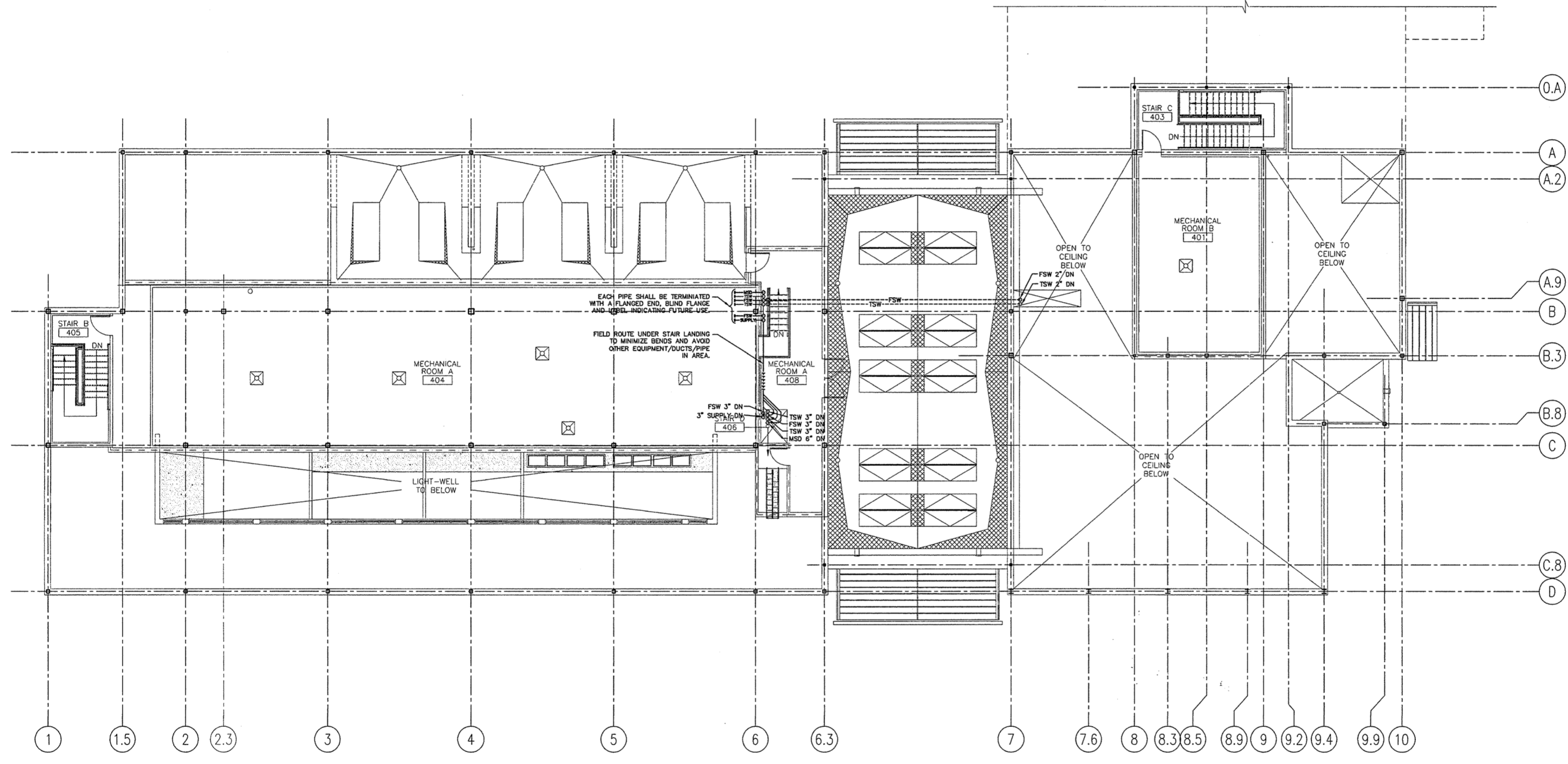


- NOTE:**
- SEE SHEET M-001 FOR LEGEND AND ABBREVIATIONS.
 - FOR ALL SEAWATER PIPING AND DRAINS USE 45° LATERALS, 90° TEES ARE NOT ALLOWED UNLESS SPECIFIED ON THE DRAWINGS.
 - USE LONG SWEEP ELBOWS ONLY.
 - CONTRACTOR TO AVOID OTHER UTILITIES ABOVE DROP CEILING WHEN INSTALLING PIPE ABOVE DROP CEILING.
 - ALL DRAIN PIPE SHALL BE SLOPED 1/4" PER FOOT.



0	ISSUED FOR CONSTRUCTION	10/23/03
REV.	DESCRIPTION	DATE

ISSUED FOR CONSTRUCTION
 10/23/03

CURRENT ISSUE STATUS:

SM RT ARCHITECTURE ENGINEERING PLANNING
 144 Fore Street P.O. Box 618
 Portland, Maine 04104
 tel. (207) 772-3846
 fax. (207) 772-1070

THE GULF OF MAINE RESEARCH INSTITUTE
 PORTLAND, MAINE

PROJECT: **MEZZANINE SEAWATER SYSTEM PIPING PLAN**

SHEET TITLE: **SW107**

SCALE: 1/8" = 1'-0" DATE: _____
 DESIGNED BY: JSC GRAPHIC SCALE: 0' 1"
 DRAWN BY: JBC/JSC
 CHECKED BY: MCJ SHEET No. _____
 FILE: PL113-03034
 PROJECT No. 03034

1/8" = 1'-0"