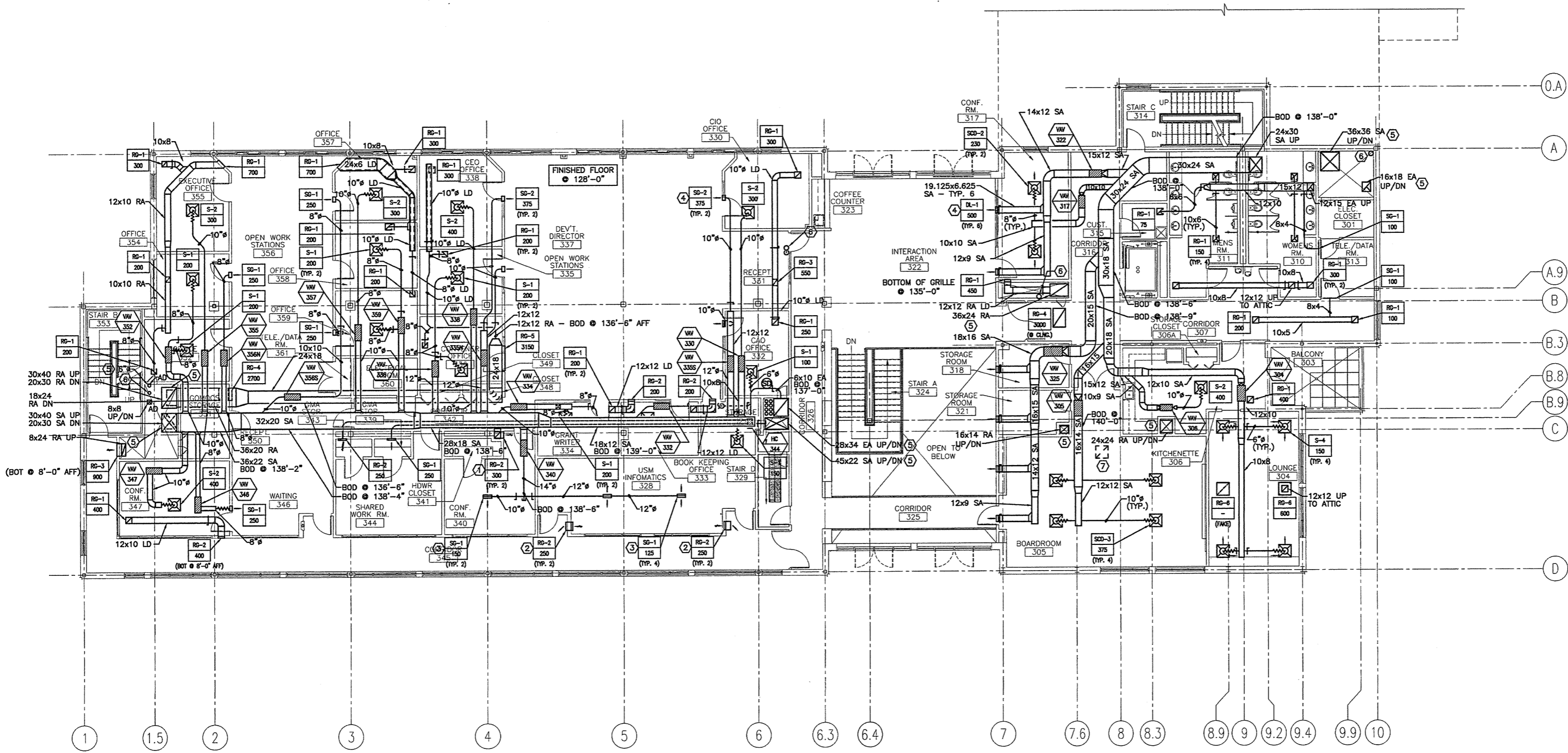


NOTE:

1. SEE SHEET M-001 FOR LEGEND AND ABBREVIATIONS.

KEYED NOTES:

- ① RG-2 IN CONF. 340 @ 12" AFF. RG-2 IN CORRIDOR 342 @ 4" BELOW CEILING. CONNECT WITH 10x10 LD IN CHASE.
- ② RG-2 IN 328 HIGH ON WALL CONNECTED TO RG-2 12" AFF IN CORRIDOR 345 BY 4-1/2" x 13" LD.
- ③ MOUNT TO ROUND DUCT WITH ADAPTER - MOUNT GRILLE ORIENTED VERTICALLY.
- ④ 6-3/4"x19-1/4" OPENING IN STEEL I-BEAM BEHIND LOUVER. 6-5/8"x19-1/8" DUCT TO EACH DRUM LOUVER. TYP. 6.
- ⑤ WHERE DUCT PASSES THROUGH FLOOR, INSTALL A FIRE DAMPER. PROVIDE ACCESS DOOR IN DUCT ABOVE FIRE DAMPER.
- ⑥ 4" SCHEDULE 40 PVC PIPE UP FROM UNDERSLAB VENTING SYSTEM - TYPICAL 4 PLACES.
- ⑦ 24"x24" OED [OPEN-ENDED DUCT] ABOVE THE CEILING SYSTEM.



0	ISSUED FOR CONSTRUCTION	10-23-03
REV.	DESCRIPTION	DATE
ISSUED FOR CONSTRUCTION		
10-23-03		
CURRENT ISSUE STATUS:		
PROJECT NORTH		
THE GULF OF MAINE RESEARCH INSTITUTE		
PORTLAND, MAINE		
THIRD FLOOR HVAC PLAN		
SHEET TITLE:		
SCALE:	1/8" = 1'-0"	DATE: 10-23-03
PROJECT MANAGER:	DRL	GRAPHIC SCALE: 0" 1"
JOB CAP/DRAWN:	SDL/CAH	
A/E OF RECORD:	DBR	SHEET No.
SMRT CAD FILE:	MH103-03034	MH103
PROJECT No.	03034	

A1 FLOOR PLAN

1/8" = 1'-0"