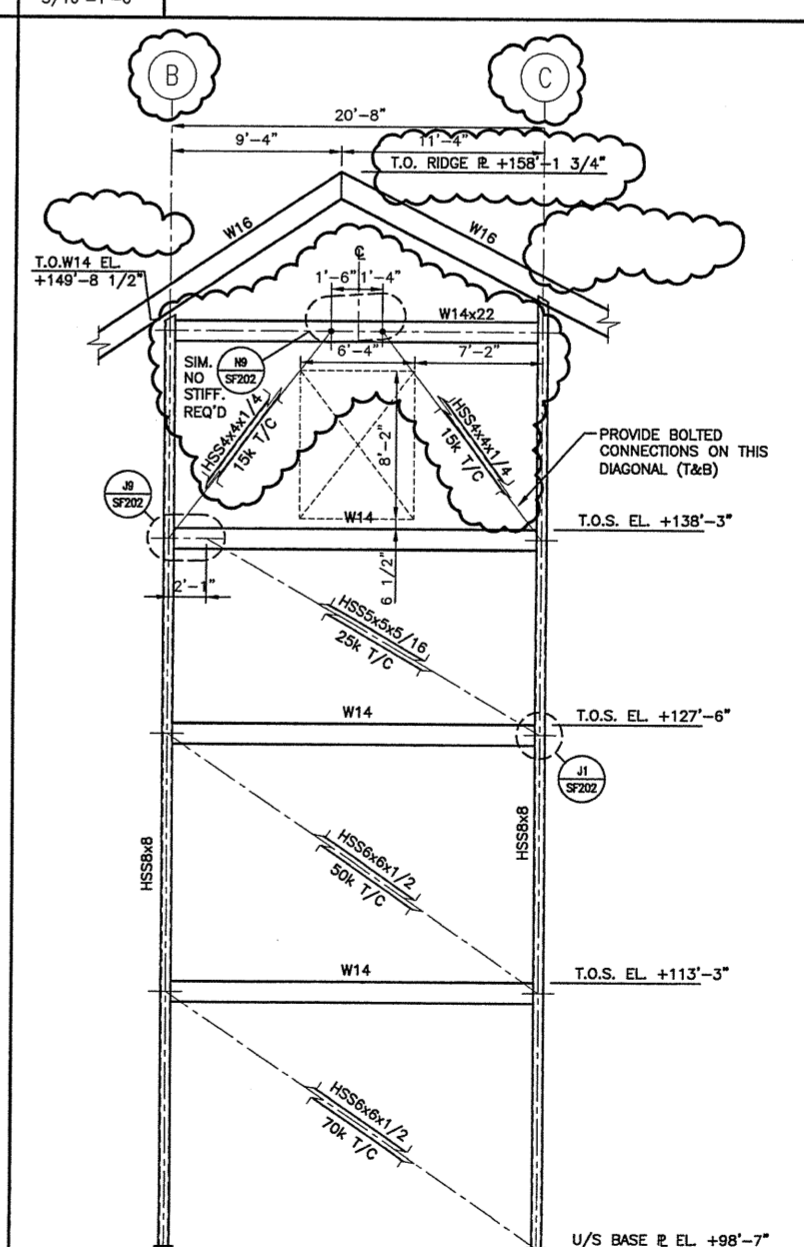
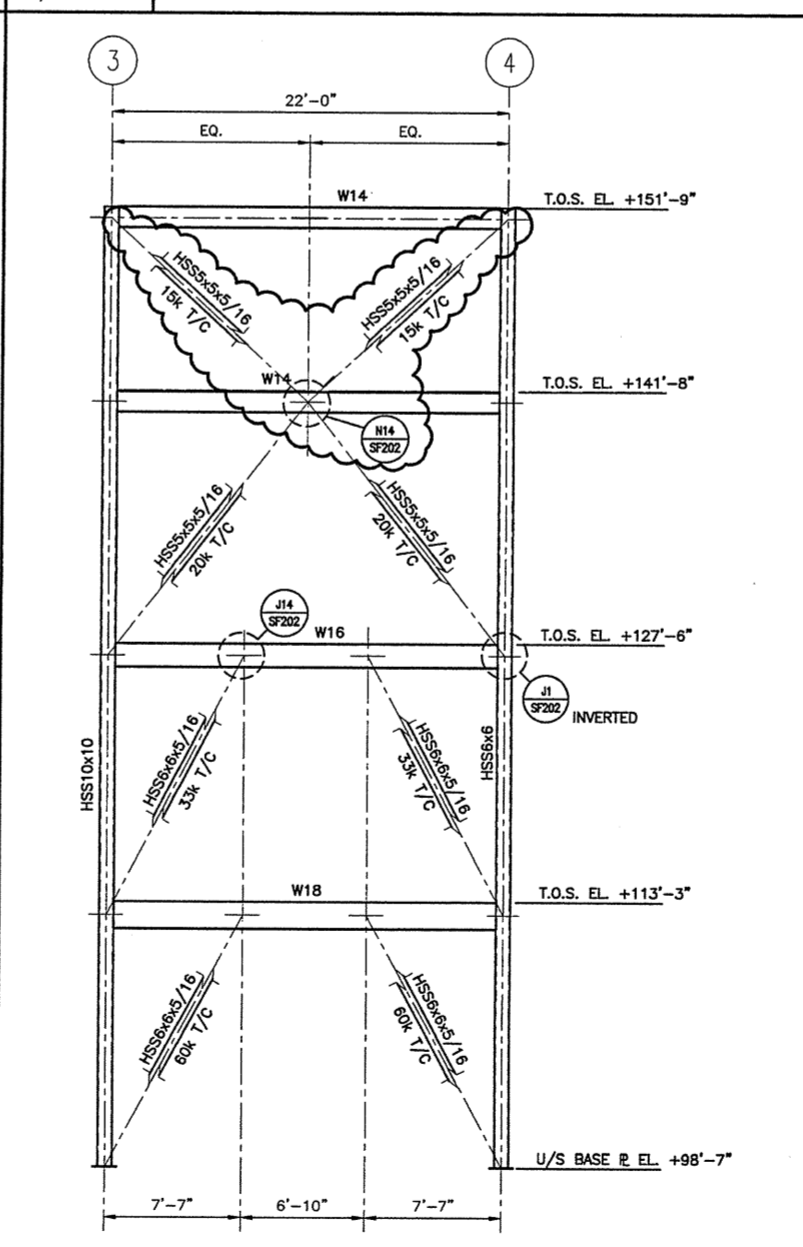
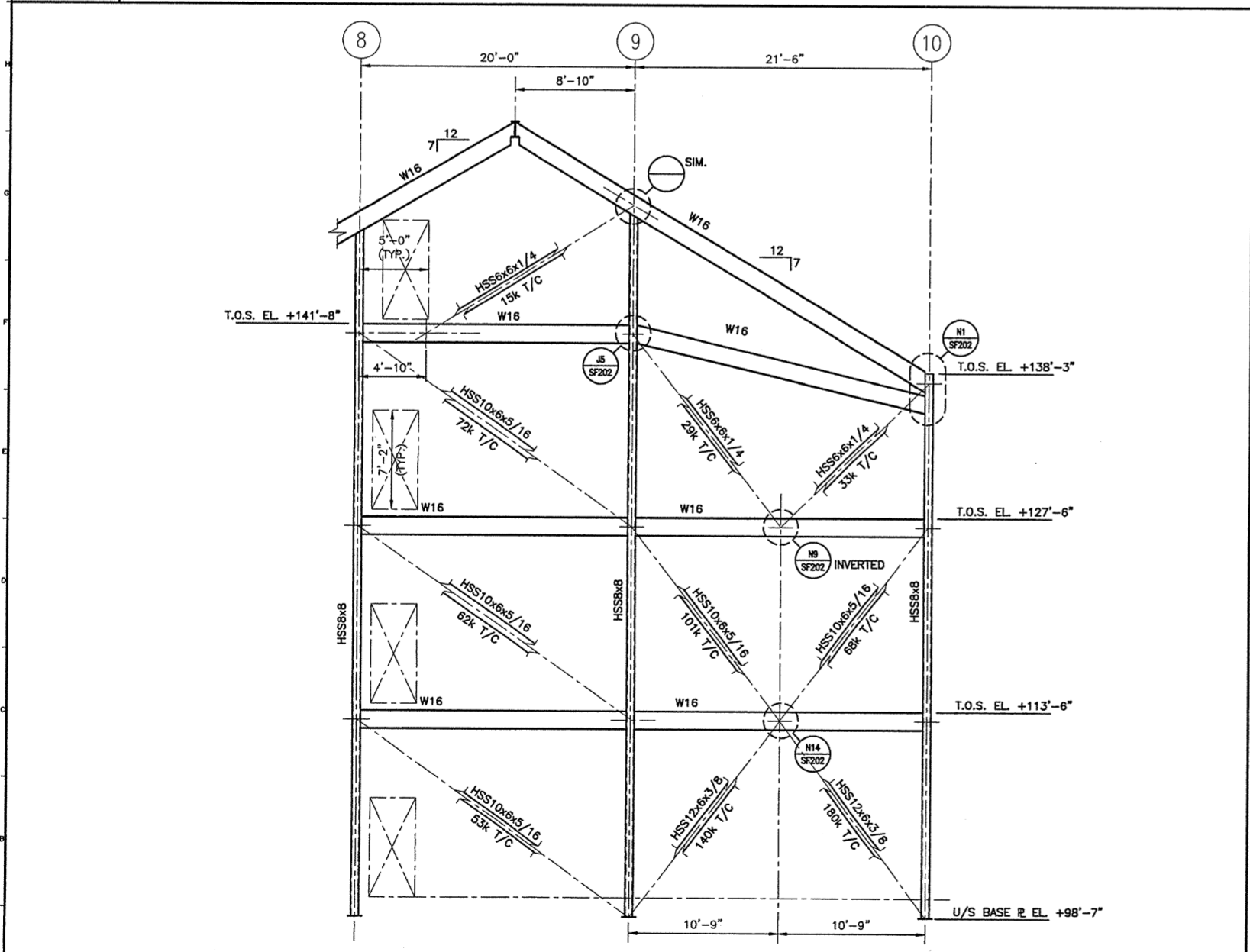


GENERAL NOTES:
1. SEE SG001 FOR STRUCTURAL GENERAL NOTES.

J1 BRACING ELEVATION ALONG COL. LINE D
3/16"=1'-0"

J9 BRACING ELEVATION ALONG COL. LINE 10
3/16"=1'-0"

J14 BRACING ELEVATION ALONG COL. LINE 1
3/16"=1'-0"



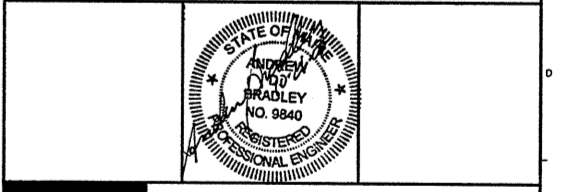
A1 BRACING ELEVATION ALONG COL. LINE A
3/16"=1'-0"

A9 BRACING ELEVATION ALONG COL. LINE C
3/16"=1'-0"

A14 BRACING ELEVATION ALONG COL. LINE 6.3
3/16"=1'-0"

2	ISSUED FOR ADDENDUM 3	10-23-03
1	ISSUED FOR ADDENDUM 2	9-25-03
0	ISSUED FOR CONSTRUCTION	8-26-03
REV.	DESCRIPTION	DATE

ISSUED FOR ADDENDUM 3
10-23-03



ARCHITECTURE ENGINEERING PLANNING
SMRT
144 Fore Street, P.O. Box 618
Portland, Maine 04104
tel. (207) 772-3846
fax. (207) 772-1070

THE GULF OF MAINE RESEARCH INSTITUTE
PORTLAND, MAINE

PROJECT: **STRUCTURAL BRACING ELEVATIONS**

SHEET TITLE:	DATE:
SCALE: AS NOTED	GRAPHIC SCALE: 0" = 1'
PROJECT MANAGER: DRL	SHEET No.
JOB CAP/DRAWN: SDL/TCM	SMRT CAD FILE: SF201-03034
A/E OF RECORD: ADB	PROJECT No. 03034

SF201