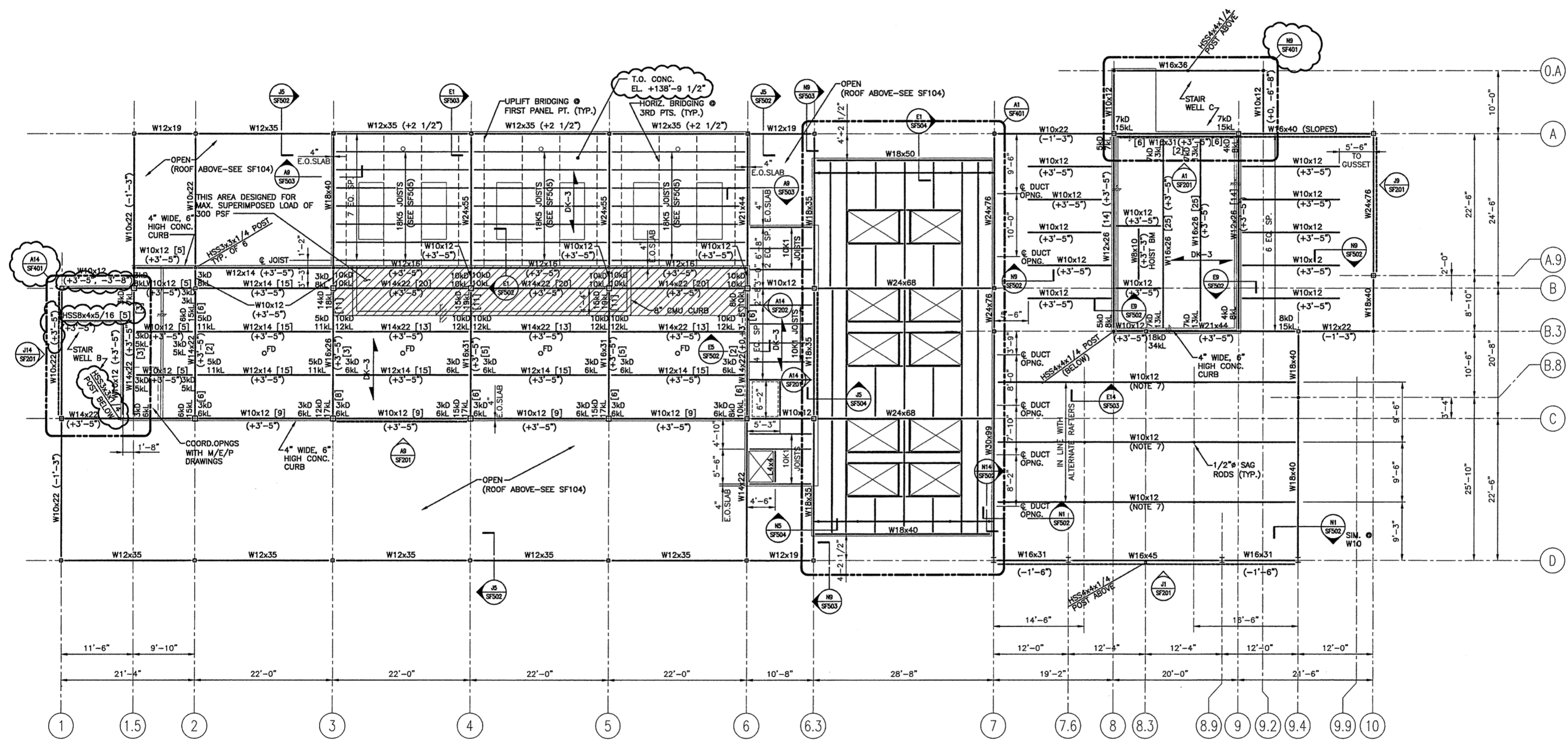
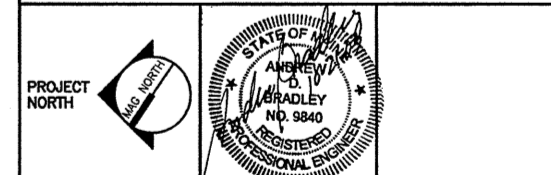


- GENERAL NOTES:**
- SEE SG001 FOR STRUCTURAL GENERAL NOTES.
 - TOP OF CONCRETE IS +142'-0", UNLESS OTHERWISE NOTED.
 - TOP OF STEEL ELEVATION = +138'-3" UNLESS NOTED OTHERWISE THUS (±X'-X") ON PLAN.
 - MC DENOTES MOMENT CONNECTION.
 - NUMBER IN SQUARE BRACKETS [X] DENOTES QUANTITY OF HEADED STUDS EVENLY DISTRIBUTED PER SPAN INDICATED. SEE SF501 FOR PLACEMENT GUIDELINES.
 - REACTIONS LISTED FOR COMPOSITE BEAMS ARE SERVICE VALUES.
 - IF W10X12'S AT ELEVATION +138'-3" ARE USED FOR SUPPORT OF CEILING FRAMING, INTERCONNECT W10'S WITH 6" GAUGE STUDS AT 36" O.C. (STONG AXIS VERTICLE) WITH (2) 0.177" P.A.F. TO TOP FLANGE. PROVIDE DIAGONAL KICKERS EACH END AT A 1:1 SLOPE CONNECTED TO THE ROOF DECK.



2	ISSUED FOR ADDENDUM 3	10-23-03
1	ISSUED FOR ADDENDUM 2	9-25-03
0	ISSUED FOR CONSTRUCTION	8-26-03
REV.	DESCRIPTION	DATE

ISSUED FOR ADDENDUM 3
10-23-03



SMRT
 ARCHITECTURE ENGINEERING PLANNING
 144 Fore Street/P.O. Box 618
 Portland, Maine 04104
 Tel: (207) 772-3846
 Fax: (207) 772-1070

THE GULF OF MAINE RESEARCH INSTITUTE
 PORTLAND, MAINE

MEZZANINE LEVEL FRAMING PLAN

SHEET TITLE:	MEZZANINE LEVEL FRAMING PLAN
SCALE:	1/8"=1'-0" DATE: 8-26-03
PROJECT MANAGER:	DRL GRAPHIC SCALE: 0" 1"
JOB CAP/DRAWN:	SDL/TCM
A/E OF RECORD:	ADB SHEET No.
SMRT CAD FILE:	SF103-03034
PROJECT No.	03034

A1 MEZZANINE LEVEL FRAMING PLAN
 1/8"=1'-0"