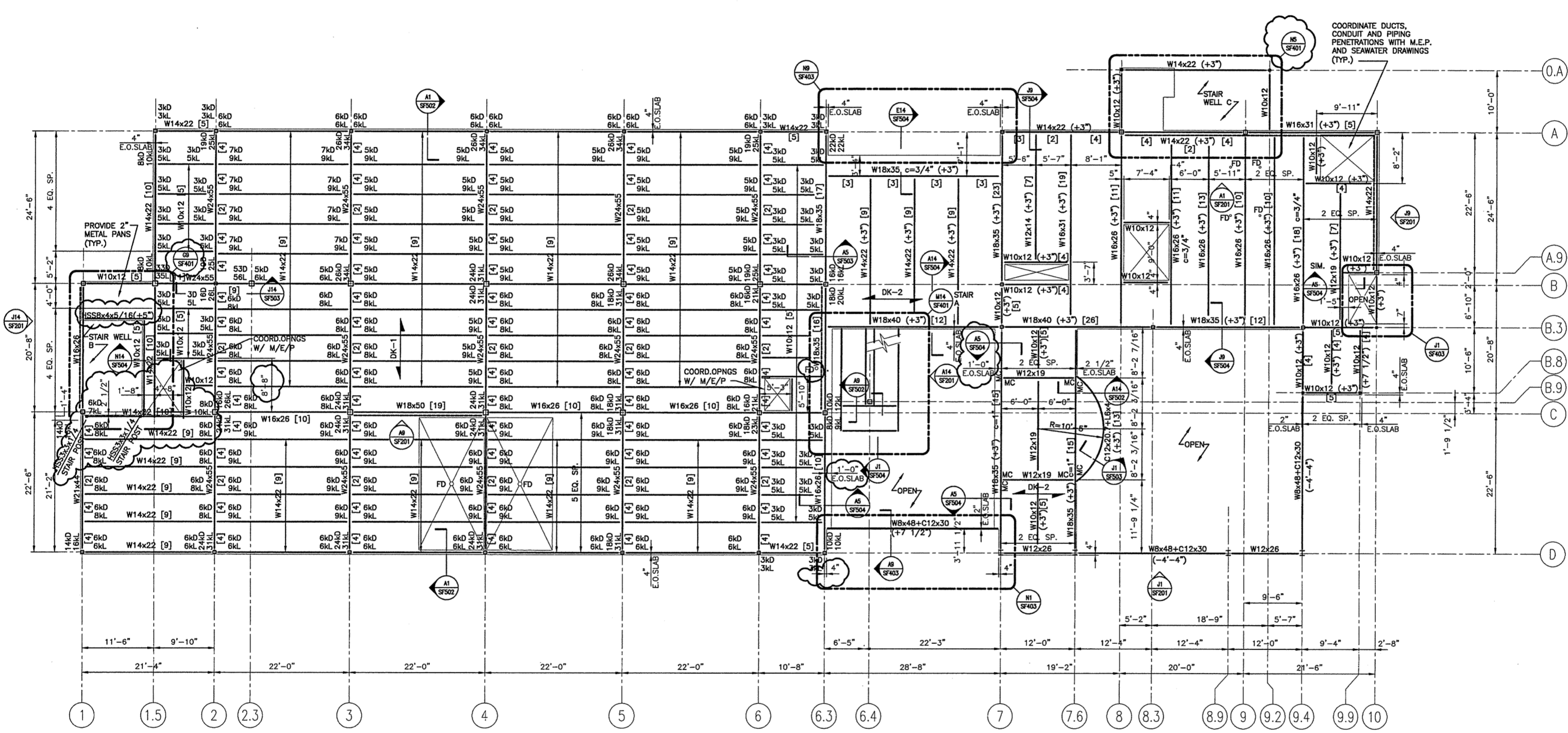


**GENERAL NOTES:**

1. SEE S6001 FOR STRUCTURAL GENERAL NOTES.
2. TOP OF CONCRETE IS +114'-0", UNLESS NOTED OTHERWISE.
3. TOP OF STEEL ELEVATION = +113'-3" UNLESS NOTED OTHERWISE THUS (±X'-X") ON PLAN.
4. MC DENOTES MOMENT CONNECTION.
5. NUMBER IN SQUARE BRACKETS [X] DENOTES QUANTITY OF HEADED STUDS EVENLY DISTRIBUTED PER SPAN INDICATED. SEE SF501 FOR PLACEMENT GUIDELINES.
6. REACTIONS LISTED FOR COMPOSITE BEAMS ARE SERVICE VALUES.



2	ISSUED FOR ADDENDUM 3	10-23-03
1	ISSUED FOR ADDENDUM 2	9-25-03
0	ISSUED FOR CONSTRUCTION	8-26-03
REV.	DESCRIPTION	DATE

**ISSUED FOR ADDENDUM 3**  
**10-23-03**

CURRENT ISSUE STATUS:

**SMRT** ARCHITECTURE ENGINEERING PLANNING  
 144 Fore Street/P.O. Box 618  
 Portland, Maine 04104  
 tel. (207) 772-3846  
 fax. (207) 772-1070

**THE GULF OF MAINE RESEARCH INSTITUTE**  
 PORTLAND, MAINE

**SECOND FLOOR FRAMING PLAN**

SHEET TITLE:	1/8"=1'-0"	DATE:	8-26-03
PROJECT MANAGER:	ORL	GRAPHIC SCALE:	0"
JOB CAP/DRWING:	SD/TOM	A/E OF RECORD:	ADD
SMRT CAD FILE:	SF101-03034	SHEET No.:	SF101
PROJECT No.:	03034		

**A1** SECOND FLOOR FRAMING PLAN  
 1/8"=1'-0"