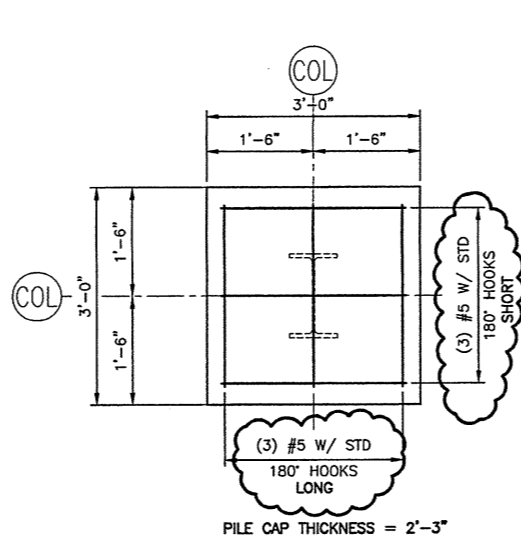
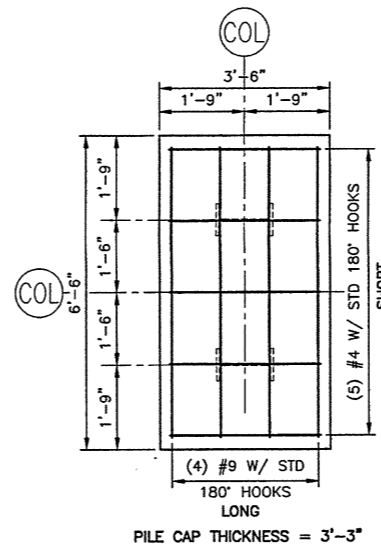


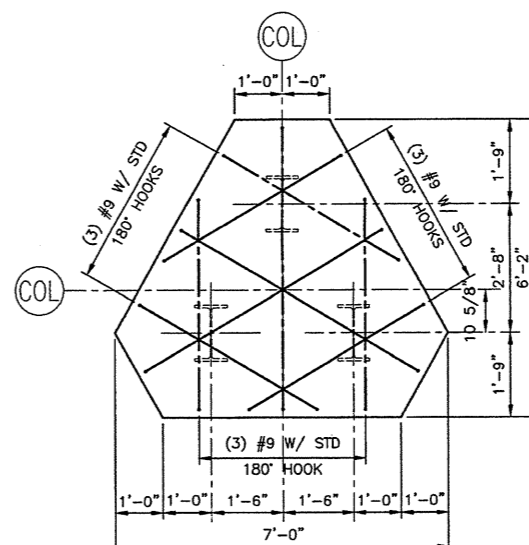
GRADE BEAM SCHEDULE									
MARK	SIZE (w x h)	BOTTOM BARS	TOP BARS		STIRRUPS		REMARKS		
			CONT.	RIGHT	SIZE	SPACING			
GB-1	16"x22"	4 #7	2 #5	2 #5	5 #5	#3	16"		
GB-2	16"x22"	4 #7	2 #5	2 #5	5 #5	#3	16"		
GB-3	16"x22"	4 #7	2 #5	2 #5	5 #5	#3	16"		
GB-4	16"x22"	4 #7	2 #5	2 #5	5 #5	#3	16"		
GB-5	16"x22"	4 #7	2 #5	2 #5	5 #5	#3	16"		
GB-6	16"x22"	4 #7	2 #5	2 #5	5 #5	#3	16"		
GB-7	16"x48"	4 #7	2 #5	2 #5	5 #5	#3	16"		
GB-8	16"x22"	4 #7	2 #5	2 #5	5 #5	#3	16"		
GB-9	16"x22"	4 #7	2 #5	2 #5	5 #5	#3	16"		
GB-10	16"x22"	4 #7	2 #5	2 #5	5 #5	#3	16"		
GB-11	16"x22"	4 #7	2 #5	2 #5	5 #5	#3	16"		
GB-12	16"x22"	4 #7	3 #5	2 #5	4 #5	#3	16"		
GB-13	18"x18"	5 #5	3 #5	2 #5	4 #7	#4	8"		
GB-14	18"x18"	5 #5	3 #5	2 #5	4 #7	#4	8"		
GB-15	18"x18"	5 #5	3 #5	2 #5	4 #7	#4	8"		
GB-16	18"x18"	5 #5	3 #5	2 #5	4 #7	#4	8"		
GB-17	18"x18"	5 #5	3 #5	2 #5	4 #7	#4	8"		
GB-18	18"x18"	5 #5	3 #5	2 #5	4 #7	#4	8"		
GB-19	18"x36"	5 #7	3 #5	2 #5	4 #7	#3	16"		
GB-20	18"x18"	5 #5	3 #5	3 #7	4 #7	#4	8"		
GB-21	18"x18"	5 #5	3 #5	2 #5	4 #7	#4	8"		
GB-22	18"x18"	5 #5	3 #5	2 #5	4 #7	#4	8"		
GB-23	18"x18"	5 #5	3 #5	2 #5	4 #7	#4	8"		
GB-24	18"x18"	5 #5	3 #5	2 #5	4 #7	#4	8"		
GB-25	18"x18"	5 #5	3 #5	2 #5	4 #7	#4	8"		
GB-26	18"x18"	5 #5	3 #5	2 #5	4 #7	#4	8"		
GB-27	18"x18"	5 #5	3 #5	2 #5	4 #7	#4	8"		
GB-28	18"x18"	5 #5	3 #5	2 #5	4 #7	#4	8"		
GB-29	18"x18"	5 #5	3 #5	2 #5	4 #7	#4	8"		
GB-30	18"x18"	5 #5	3 #5	2 #5	4 #7	#4	8"		
GB-31	18"x36"	5 #7	3 #5	2 #5	4 #7	#4	8"		
GB-32	18"x18"	5 #5	3 #5	2 #5	4 #7	#4	8"		
GB-33	18"x18"	5 #5	3 #5	2 #5	4 #7	#4	8"		
GB-34	18"x18"	5 #5	3 #5	2 #5	4 #7	#4	8"		
GB-35	16"x22"	4 #7	2 #5	2 #5	5 #5	#3	16"		
GB-36	16"x22"	4 #7	2 #5	2 #5	5 #5	#3	16"		
GB-37	16"x22"	4 #7	2 #5	2 #5	5 #5	#3	16"		
GB-38	16"x22"	4 #7	2 #5	2 #5	5 #5	#3	16"		
GB-39	16"x22"	4 #7	2 #5	2 #5	5 #5	#3	16"		
GB-40	16"x22"	4 #7	2 #5	2 #5	5 #5	#3	16"		
GB-41	16"x22"	4 #7	2 #5	2 #5	5 #5	#3	16"		
GB-42	16"x22"	4 #7	2 #5	2 #5	5 #5	#3	16"		
GB-43	16"x48"	4 #7	2 #5	2 #5	5 #5	#3	16"		
GB-44	20"x22"	5 #7	2 #5	2 #5	3 #5	#3	16"		
GB-45	20"x22"	5 #7	2 #5	2 #5	3 #5	#3	16"		
GB-46	20"x22"	5 #7	2 #5	2 #5	3 #5	#3	16"		
GB-47	20"x22"	5 #7	2 #5	2 #5	3 #5	#3	16"		
GB-48	16"x22"	4 #7	2 #5	2 #5	5 #5	#3	16"		
GB-49	NOT USED								
GB-50	16"x22"	4 #7	2 #5	2 #5	5 #5	#3	16"		
GB-51	16"x22"	4 #7	2 #5	2 #5	5 #5	#3	16"		
GB-52	18"x18"	5 #5	2 #5	2 #5	3 #7	#3	16"		
GB-53	16"x22"	4 #7	2 #5	2 #5	5 #5	#3	16"		
GB-54	18"x18"	5 #5	3 #5	3 #5	4 #7	#4	8"		
GB-55	18"x18"	5 #5	3 #5	3 #5	4 #7	#4	8"		
GB-56	18"x18"	5 #5	3 #5	3 #5	4 #7	#4	8"		
GB-57	18"x18"	5 #5	3 #5	2 #5	2 #7	#3	8"		
GB-58	18"x18"	5 #5	3 #5	2 #5	2 #7	#3	8"		
GB-59	18"x18"	5 #5	3 #5	2 #5	2 #7	#3	8"		
GB-60	18"x18"	5 #5	3 #5	2 #5	2 #7	#3	8"		
GB-61	18"x18"	5 #5	3 #5	2 #5	2 #7	#3	8"		
GB-62	18"x18"	5 #5	3 #5	2 #5	2 #7	#3	8"		
GB-63	18"x18"	5 #5	3 #5	2 #5	2 #7	#3	8"		
GB-64	18"x18"	5 #5	3 #5	2 #5	2 #7	#3	8"		
GB-65	18"x18"	5 #5	3 #5	2 #5	2 #7	#3	8"		
GB-66	18"x18"	5 #5	3 #5	2 #5	2 #7	#3	8"		
GB-67	18"x18"	5 #5	3 #5	2 #5	2 #7	#3	8"		
GB-68	18"x18"	5 #5	3 #5	2 #5	2 #7	#3	8"		
GB-69	NOT USED								
GB-70	16"x22/18"	5 #5	2 #5	3 #5	4 #7	#3	8"	SEE SECTION E9/SB501	
GB-71	18"x18"	5 #5	2 #5	3 #5	4 #7	#3	8"	SEE SECTION E9/SB501	
GB-72	16"x22/18"	5 #5	2 #5	3 #5	4 #7	#3	8"	SEE SECTION E9/SB501	
GB-73	16"x22/18"	5 #5	2 #5	2 #7	3 #7	#4	8"	SEE SECTION E9/SB501	
GB-74A	18"x18"	5 #5	2 #5	3 #5	4 #7	#4	8"		
GB-74B	18"x18"	5 #5	2 #5	3 #5	4 #7	#4	8"		
GB-75	16"x22/18"	5 #5	2 #5	3 #5	4 #7	#3	8"	SEE SECTION E9/SB501	
GB-76	18"x18"	5 #5	2 #5	2 #5	2 #5	#3	8"		
GB-77	18"x18"	5 #5	2 #5	2 #5	2 #5	#3	8"		
GB-78	18"x18"	5 #5	2 #5	2 #5	2 #5	#3	8"		
GB-79	18"x18"	5 #5	2 #5	2 #5	2 #5	#3	8"		
GB-80	18"x18"	5 #5	2 #5	2 #5	3 #7	#3	12"		
GB-81	18"x36"	5 #7	2 #5	2 #5	5 #7	#3	16"		
GB-82	16"x22"	4 #7	2 #5	2 #5	2 #5	#3	16"		
GB-83	16"x22"	4 #7	2 #5	2 #5	2 #5	#3	16"		
GB-84	16"x22"	4 #7	2 #5	2 #5	2 #5	#3	16"		
GB-85	16"x22"	4 #7	2 #5	2 #5	2 #5	#3	16"		
GB-86	16"x22"	4 #7	2 #5	2 #5	2 #5	#3	16"		
GB-87	18"x18"	5 #5	2 #5	2 #5	2 #5	#3	8"		
GB-88	18"x18"	5 #5	2 #5	2 #5	2 #5	#3	8"		
GB-89	16"x22"	4 #7	2 #5	2 #5	2 #5	#3	16"		



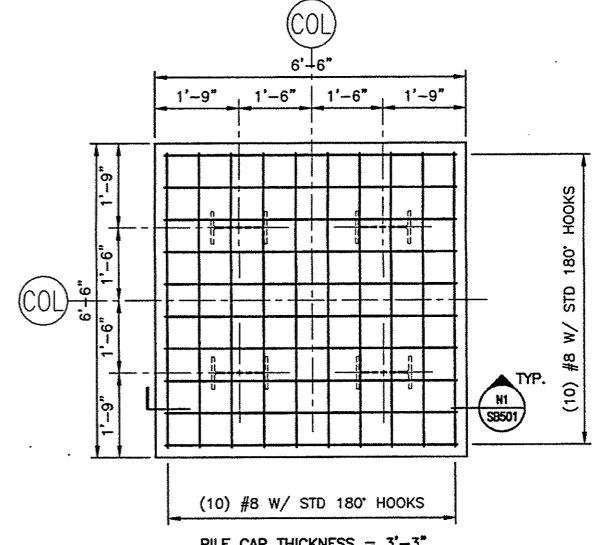
PC1
SCALE: 3/4"=1'-0"



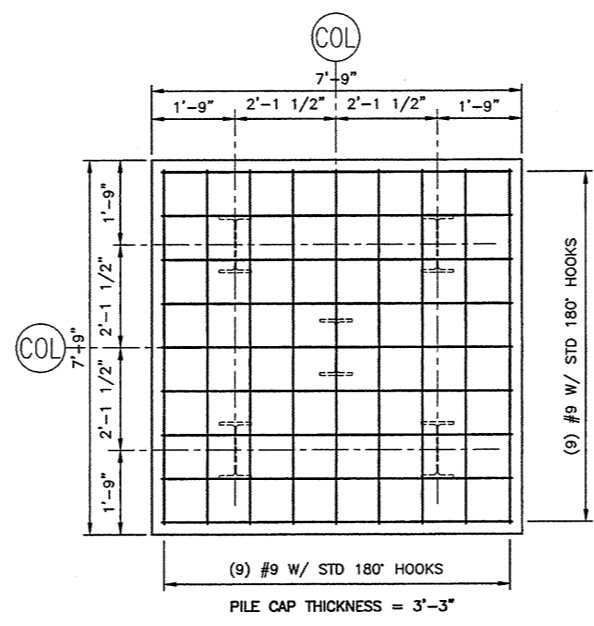
PC2
SCALE: 1/2"=1'-0"



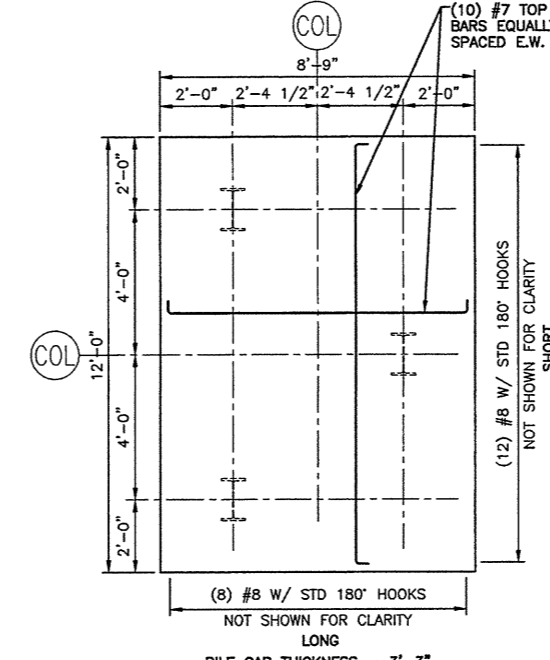
PC3
SCALE: 1/2"=1'-0"



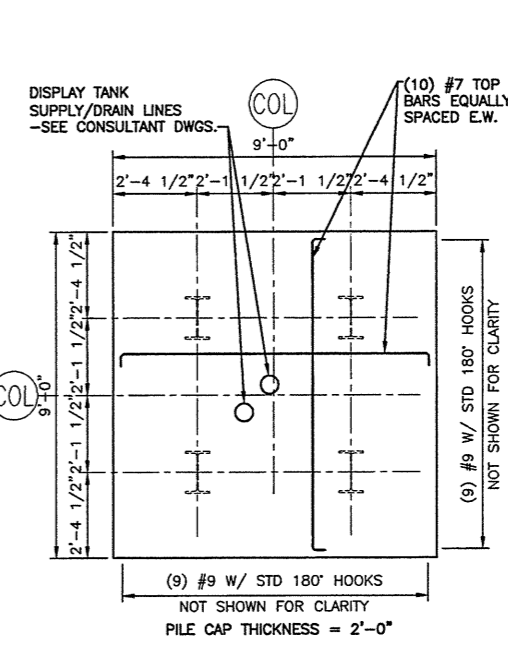
PC4
SCALE: 1/2"=1'-0"



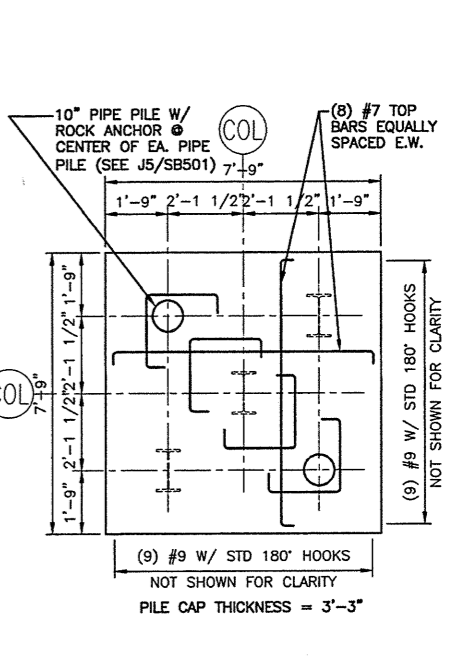
PC5
SCALE: 1/2"=1'-0"



PC3-SP
SCALE: 3/8"=1'-0"



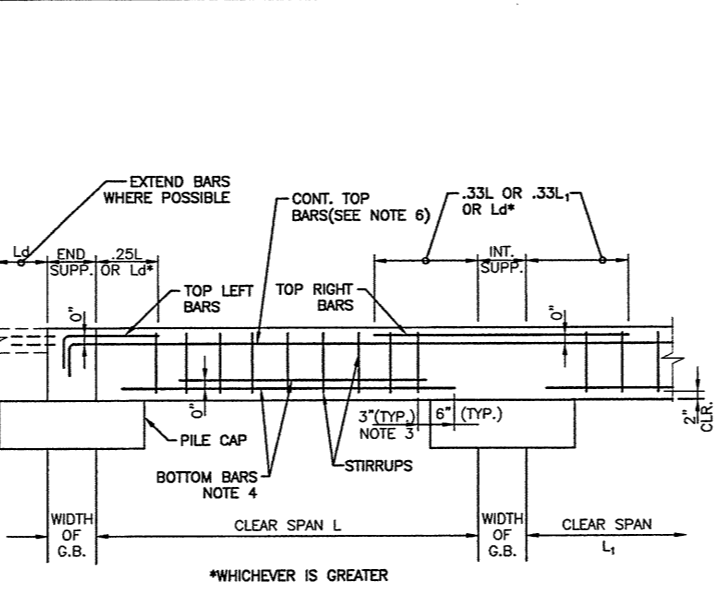
PC4-SP
SCALE: 3/8"=1'-0"



PC5-SP
SCALE: 3/8"=1'-0"

E9 DETAIL @ PILE CAPS

AS NOTED



- NOTES:
1. L_d = TENSION DEVELOPMENT LENGTH - SEE GENERAL NOTES.
 2. SEE SCHEDULE FOR BEAM DIMENSIONS AND REINFORCING.
 3. IF STIRRUP SPACING IS LESS THAN 6", PLACE FIRST STIRRUP 1/2 SPACING FROM FACE OF SUPPORT.
 4. NOT MORE THAN 50% OF BOTTOM BARS MAY BE TERMINATED 0.125L FROM FACE OF EACH SUPPORT. PROVIDE MIN. OF 2 BARS FULL LENGTH.
 5. LONGITUDINAL BARS MAY ONLY BE PLACED IN MULTIPLE LAYERS IF NOTED IN SCHEDULE. PROVIDE 1" CLEAR BETWEEN LAYERS.
 6. CONTINUOUS TOP BARS MAY BE LAP SPICED 30d AT MID SPAN OF BEAM.
 7. ORIENTATION FOR LEFT AND RIGHT TOP BARS IS DEFINED BY THE ORIENTATION OF THE GRADE BEAM LABELS ON SB101.

GENERAL NOTES:

1. SEE SG001 FOR STRUCTURAL GENERAL NOTES.

2	ISSUED FOR ADDENDUM 3	10-23-03
1	ISSUED FOR ADDENDUM 2	9-25-03
0	ISSUED FOR CONSTRUCTION	8-26-03
REV.	DESCRIPTION	DATE

ISSUED FOR ADDENDUM 3
10-23-03



SMRT ARCHITECTURE ENGINEERING PLANNING
144 Fore Street, P.O. Box 618
Portland, Maine 04104
tel. (207) 772-3846
fax. (207) 772-1070

THE GULF OF MAINE
RESEARCH INSTITUTE
PORTLAND, MAINE

PROJECT: FOUNDATION SECTIONS AND DETAILS	
SHEET TITLE:	
SCALE: AS NOTED	DATE: 8-26-03
PROJECT MANAGER: DRL	GRAPHIC SCALE: 0" = 1'
JOB CAP/DRAWN: SDL/TCM	
A/E OF RECORD: ADB	SHEET No.
SMRT CAD FILE: SB503-03034	SB503
PROJECT No. 03034	

A1 GRADE BEAM SCHEDULE

A9 TYPICAL CONCRETE BEAM DETAIL

1/2"=1'-0"