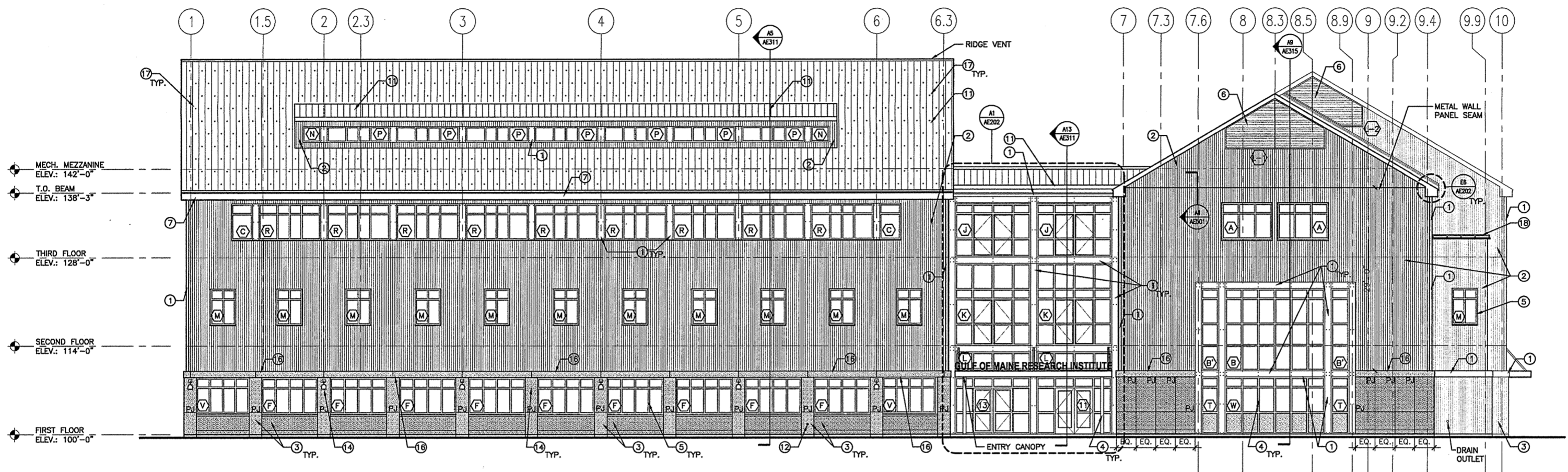


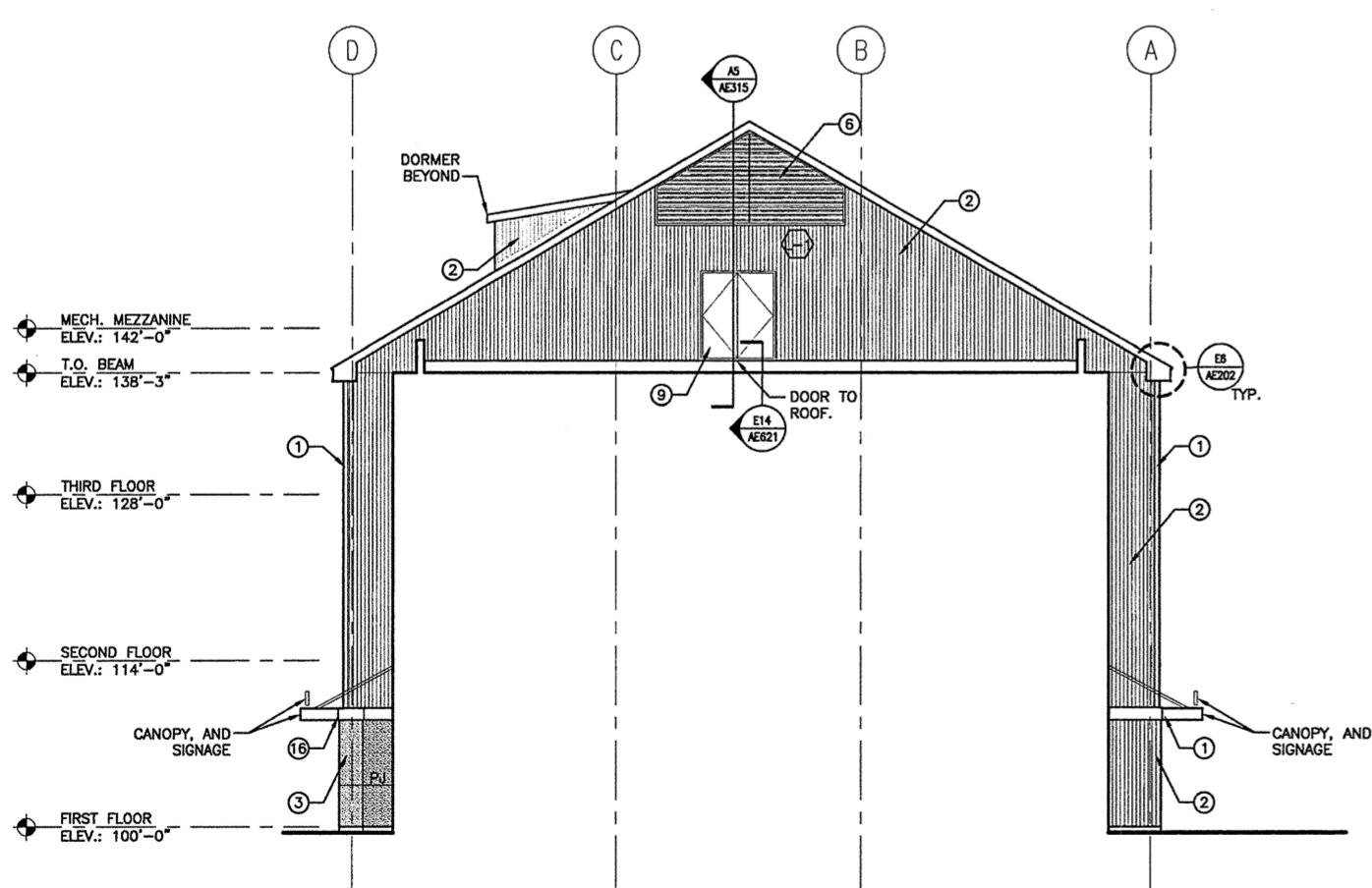
**GENERAL NOTES:**  
 1. SEE F1/AE503 FOR ELECTRICAL/PLUMBING/FIRE DEVICES MOUNTED IN METAL WALL PANELS, TYP.

- KEYED NOTES:**
- ① PAINTED STEEL TRIM
  - ② CORRUGATED METAL SIDING
  - ③ VENEER STONE MASONRY
  - ④ ALUMINUM CURTAINWALL ENTRANCE
  - ⑤ ALUMINUM WINDOW
  - ⑥ LOUVER
  - ⑦ METAL FASCIA
  - ⑧ GLAZING
  - ⑨ HOLLOW METAL DOOR AND FRAME
  - ⑩ NOT USED
  - ⑪ METAL ROOFING
  - ⑫ HOSE BIBB, SEE DETAIL F1/AE503 FOR METAL
  - ⑬ FIRE DEPARTMENT CONNECTION
  - ⑭ LIGHT FIXTURE
  - ⑮ MECHANICAL EQUIPMENT
  - ⑯ STONE LINTEL
  - ⑰ SNOW GUARDS
  - ⑱ PAINTED STEEL HANDRAIL
  - ⑲ METAL SIDING TRIM
  - ⑳ SCUPPER



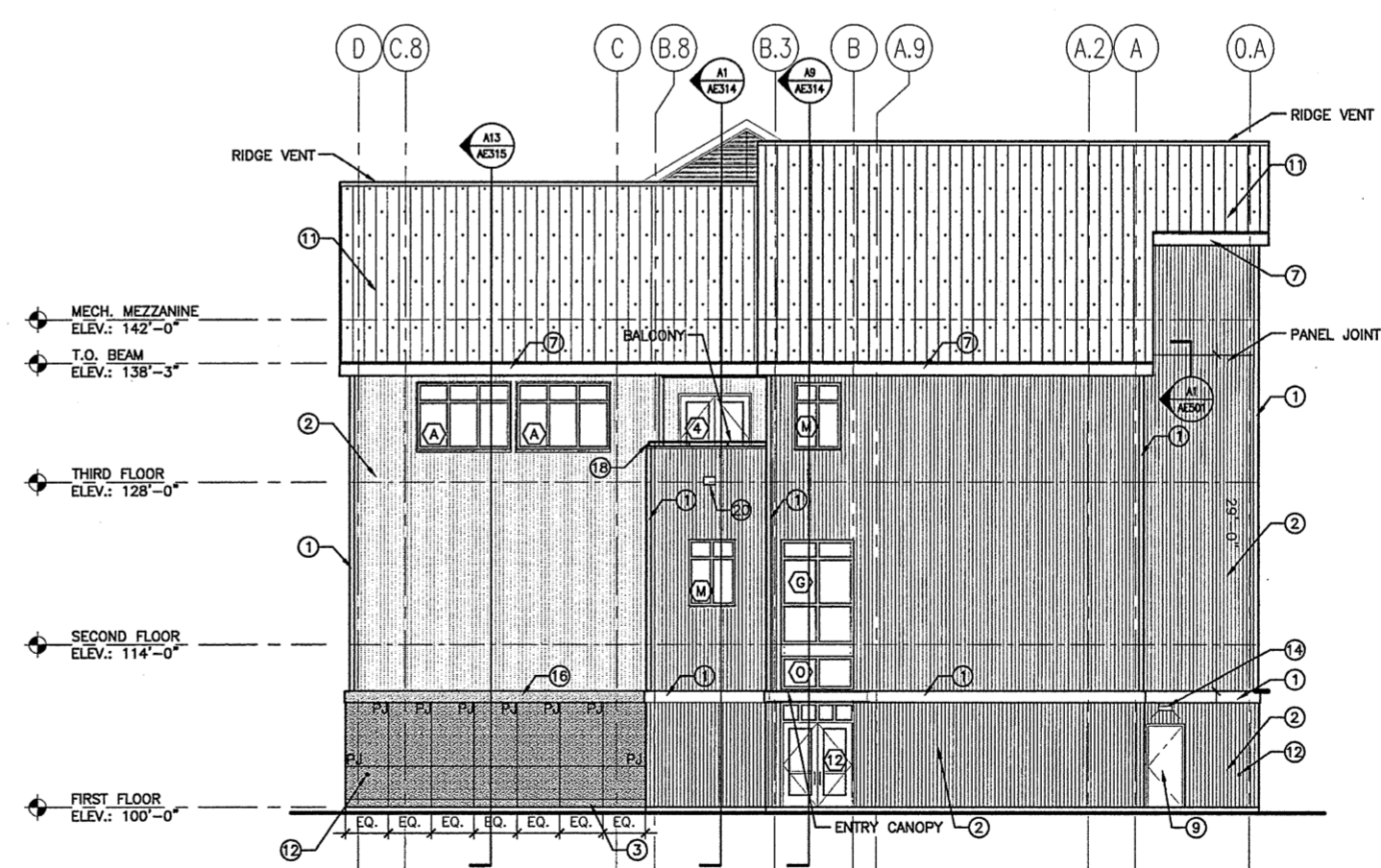
H1 WESTERN ELEVATION

1/8" = 1'-0" A-001



A1 PARTIAL SOUTHERN ELEVATION

1/8" = 1'-0" A-001



A9 SOUTHERN ELEVATIONS

1/8" = 1'-0" A-001

REV.	DESCRIPTION	DATE
0	ISSUED FOR CONSTRUCTION	10-23-03
<b>ISSUED FOR CONSTRUCTION</b> 10-23-03		
CURRENT ISSUE STATUS:		
<b>SM RT</b> ARCHITECTURE ENGINEERING PLANNING 144 Fore Street P.O. Box 618 Portland, Maine 04104 tel. (207) 772-3846 fax. (207) 772-1070		
<b>THE GULF OF MAINE RESEARCH INSTITUTE</b> PORTLAND, MAINE		
PROJECT: EXTERIOR ELEVATIONS		
SHEET TITLE:		
SCALE:	1/8" = 1'-0"	DATE: 10-23-03
PROJECT MANAGER:	DRL	GRAPHIC SCALE: 0" 1"
JOB CAP/DRAWN:	SDL	
A/E OF RECORD:	PSS	SHEET No.
SMRT CAD FILE:	AE201-03034	AE201
PROJECT No.	03034	