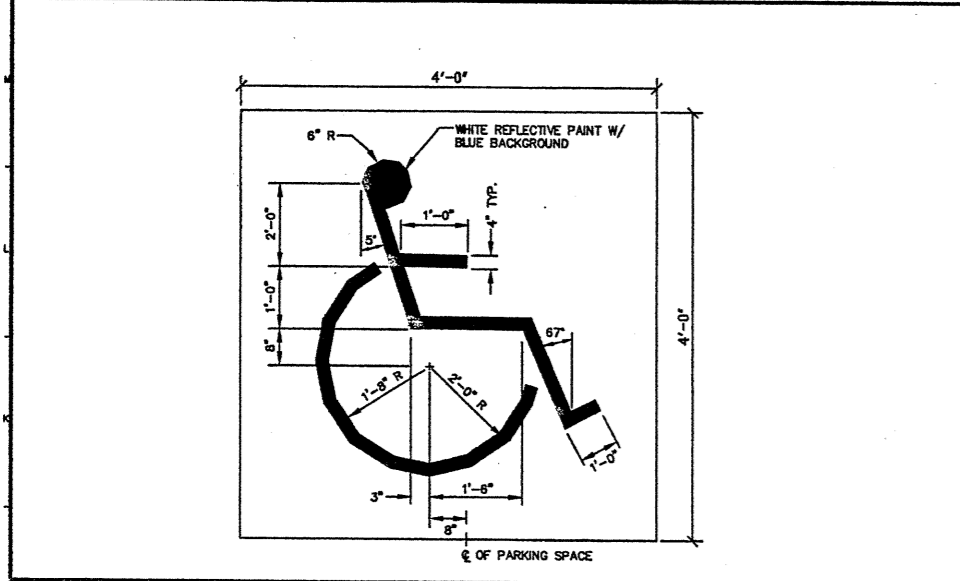
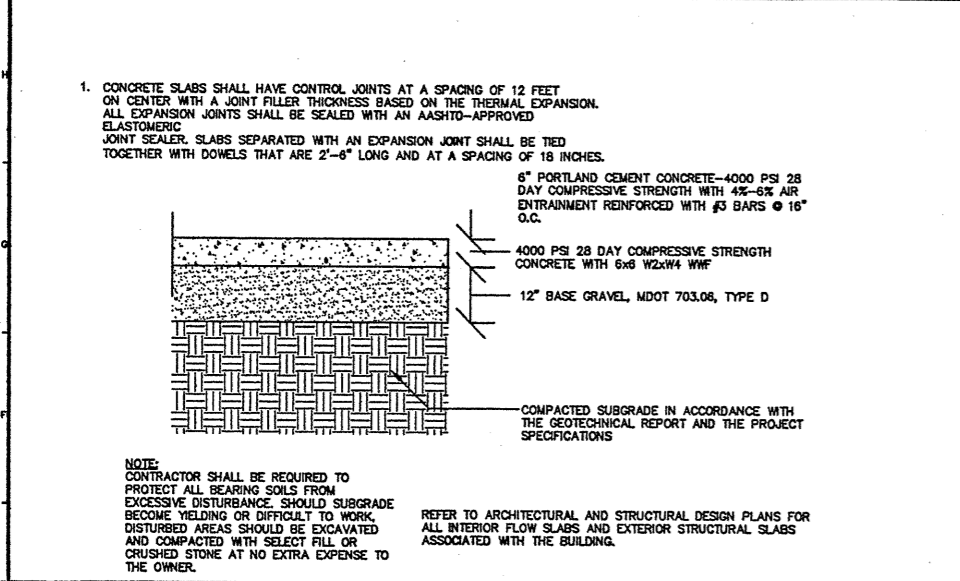


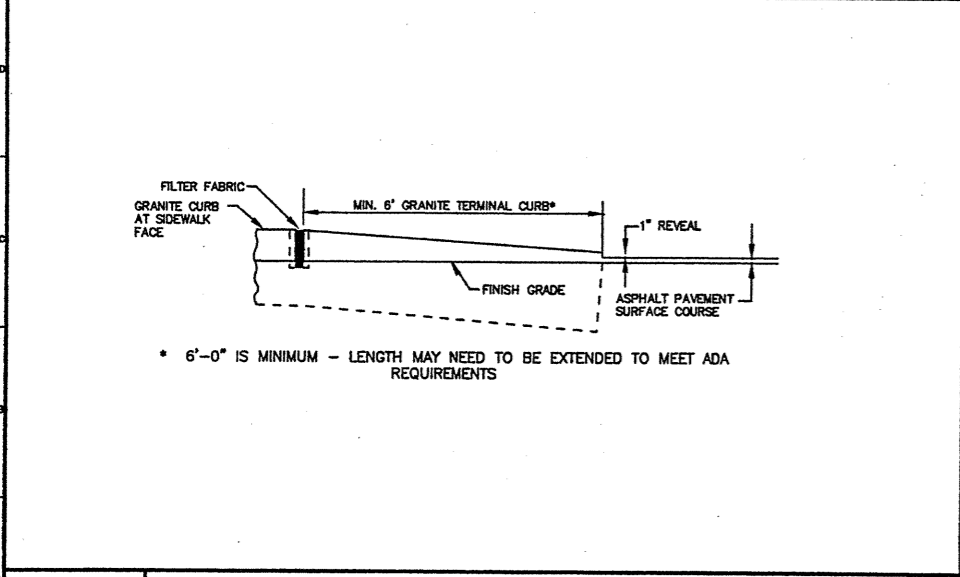
**N1 FIRE HYDRANT INSTALLATION DETAIL**  
N.T.S.



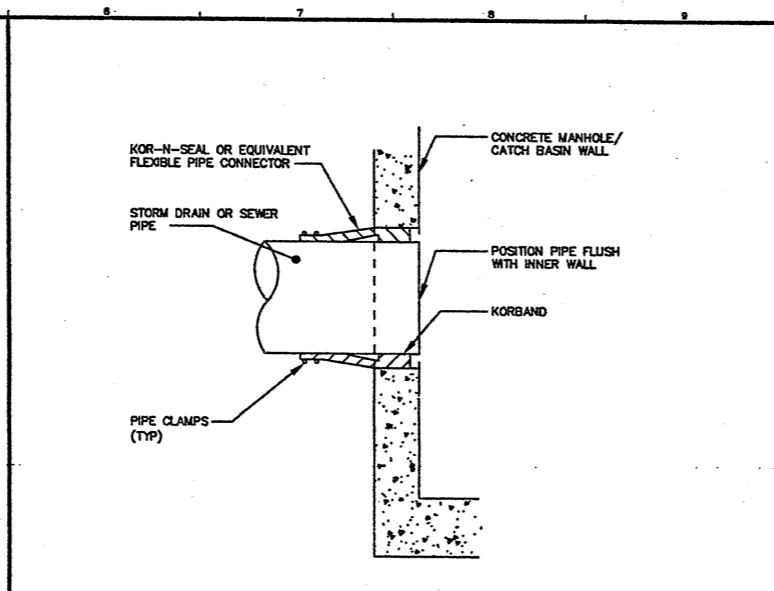
**J1 INTERNATIONAL BARRIER FREE SYMBOL**  
N.T.S.



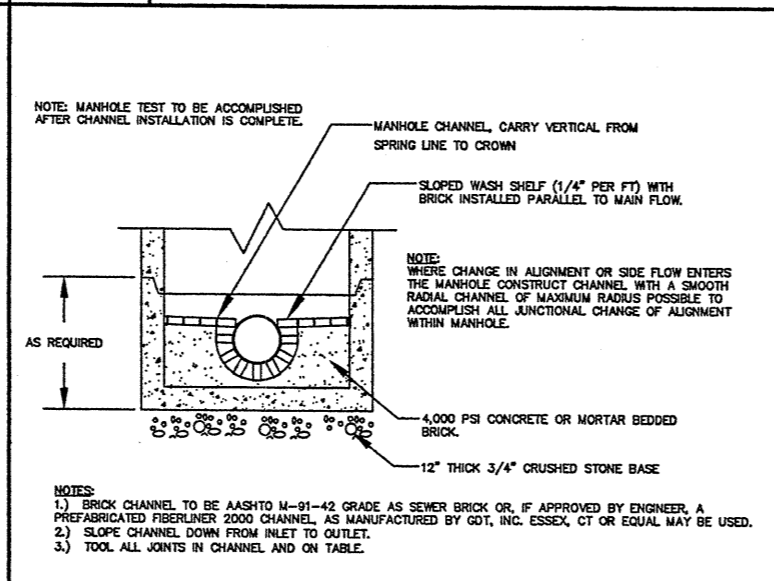
**E1 HEAVY DUTY PORTLAND CEMENT CONCRETE SECTION**  
N.T.S.



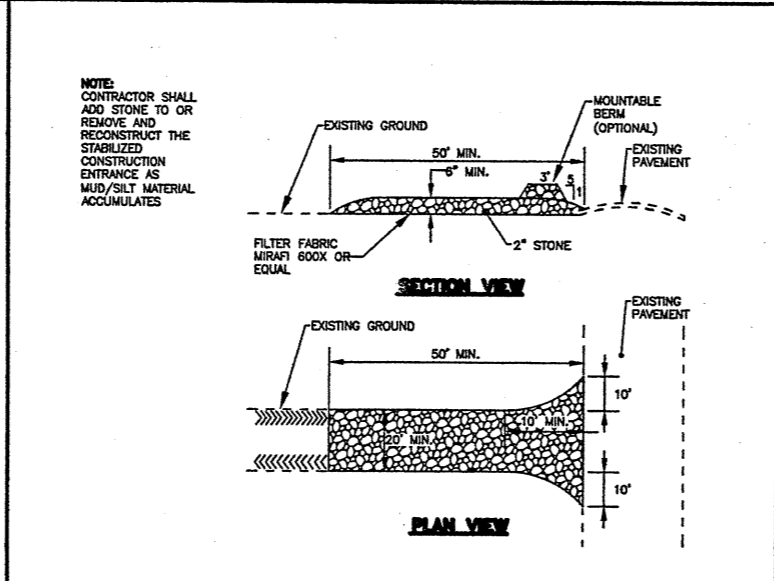
**A1 TERMINAL CURB DETAIL**  
N.T.S.



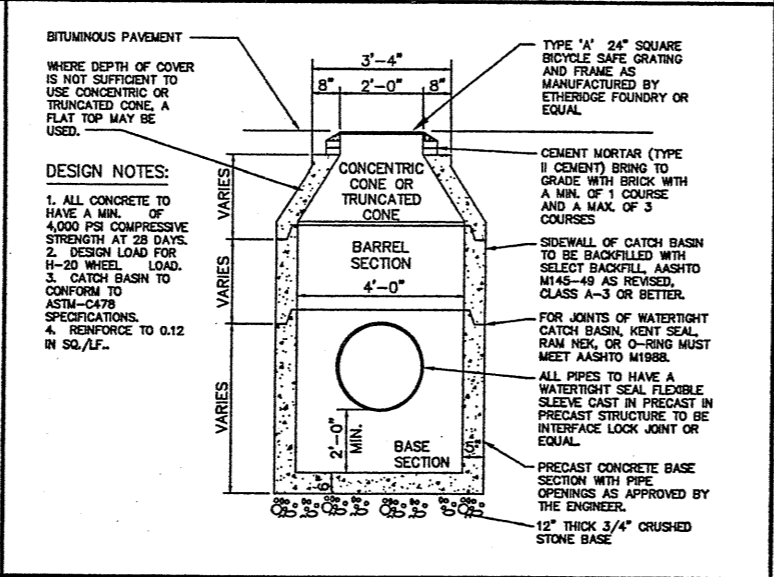
**N5 PIPE CONNECTION TO PRECAST CONCRETE SANITARY SEWER & STORM DRAINAGE STRUCTURE**  
N.T.S.



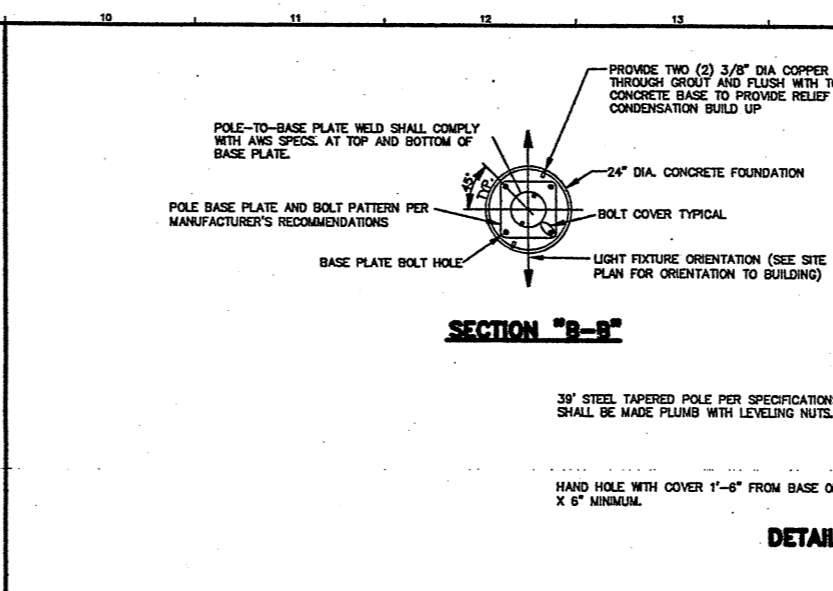
**J5 STORM & SANITARY MANHOLE CHANNEL**  
N.T.S.



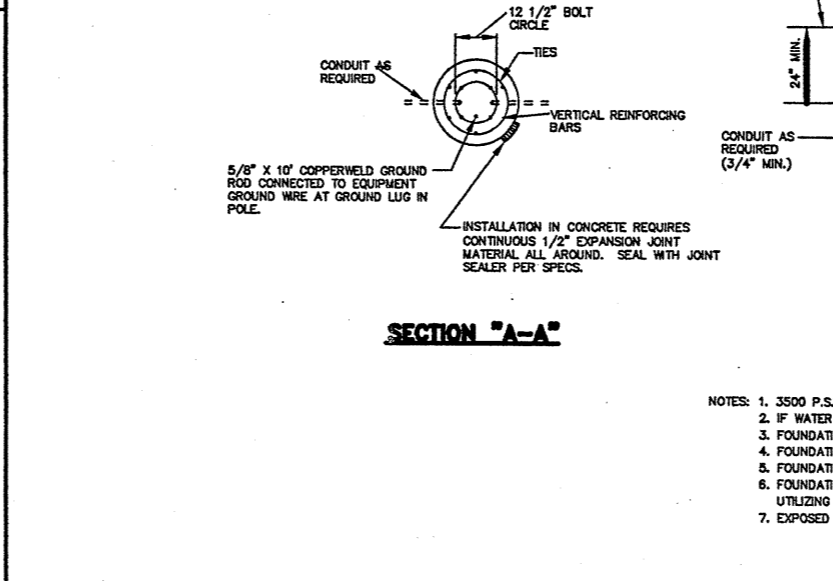
**E5 STABILIZED CONSTRUCTION ENTRANCE**  
N.T.S.



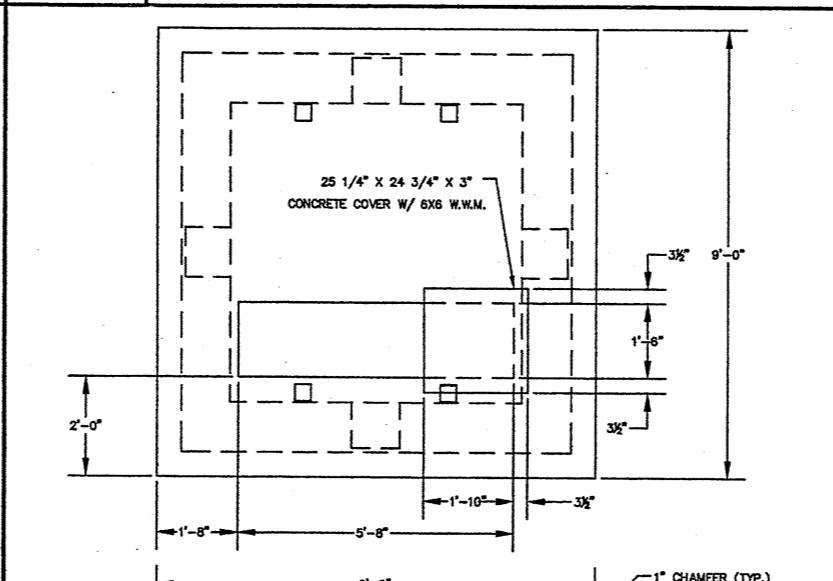
**A5 4'-0\"/>**



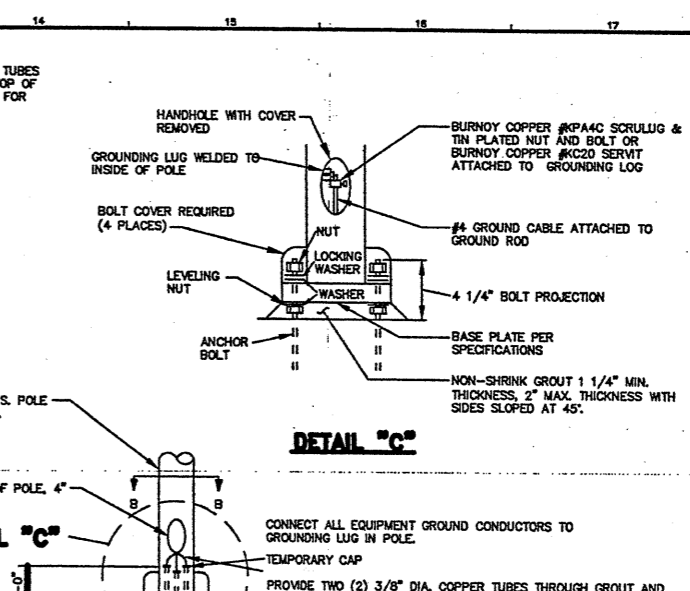
**J10 TYPICAL PARKING LOT LIGHTING POLE FOUNDATION**  
N.T.S.



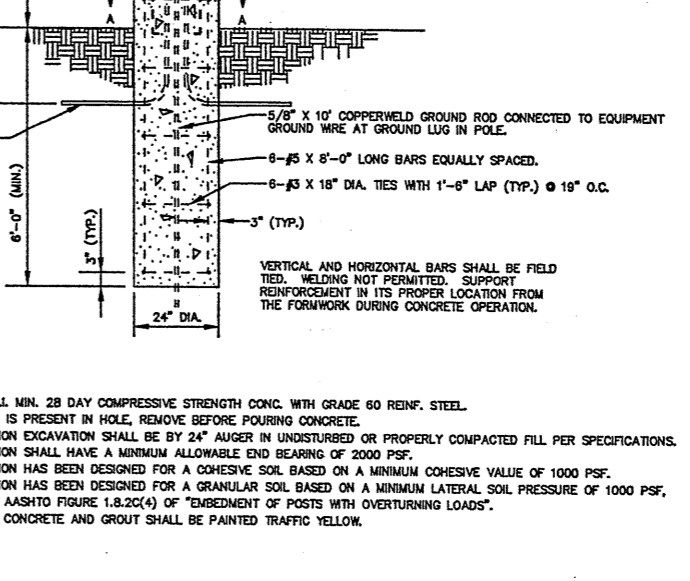
**E14 WATER SERVICE**  
N.T.S.



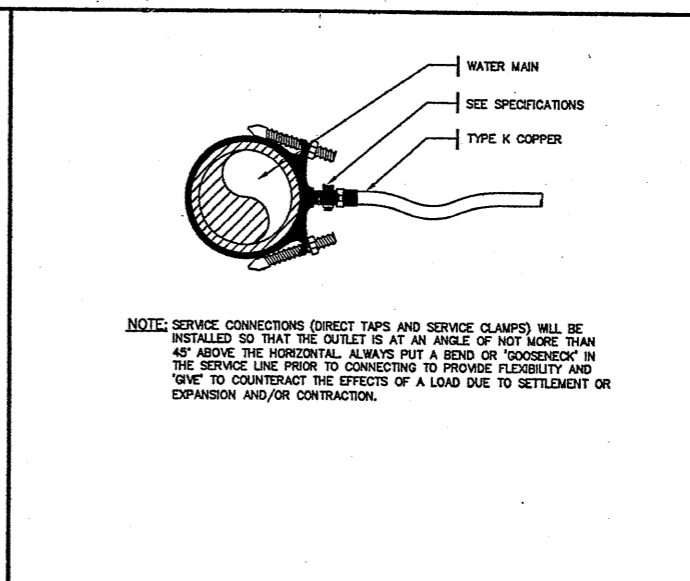
**A10 TRANSFORMER PAD DETAIL**  
N.T.S.



**DETAIL 'C-C'**



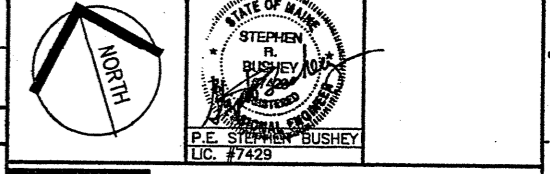
**DETAIL 'C-C'**



**A10 TRANSFORMER PAD DETAIL**  
N.T.S.

5	FINAL APPROVAL PLANS FOR CITY RECORDS	8.25.03
4	PHASE 1 CONSTRUCTION DOCUMENTS	8.12.03
3	FINAL SUBMISSION TO PORTLAND PLANNING AUTH.	7.30.03
2	DESIGN DEVELOPMENT SUBMISSION	6.13.03
1	SECOND WORKSHOP SUBMISSION TO CITY	6.10.03
REV.	DESCRIPTION	DATE

CURRENT ISSUE STATUS:



**DeLUCA-HOFFMAN ASSOCIATES, INC.**  
778 HAN STREET, SUITE 8  
SOUTH PORTLAND, ME 04106  
207.778.1121  
WWW.DELUCAHOFFMAN.COM

**SM RT** ARCHITECTURE ENGINEERING PLANNING  
SHRIT  
144 Fore Street/P.O. Box 618  
Portland, Maine 04104  
tel. (207) 772-3846  
fax. (207) 772-1070

**THE GULF OF MAINE RESEARCH INSTITUTE**  
PORTLAND, MAINE

**SITE DETAILS**

SHEET TITLE:	AS NOTED	DATE:
PROJECT MANAGER:	RML	GRAPHIC SCALE: 0" = 1'
JOB CAP/DRAWN:	CWW	
A/E OF RECORD:	DWJ	SHEET No.
SMRT CAD FILE:	CP503-03034	
PROJECT No.	03034-00/1984.1	<b>CP503</b>