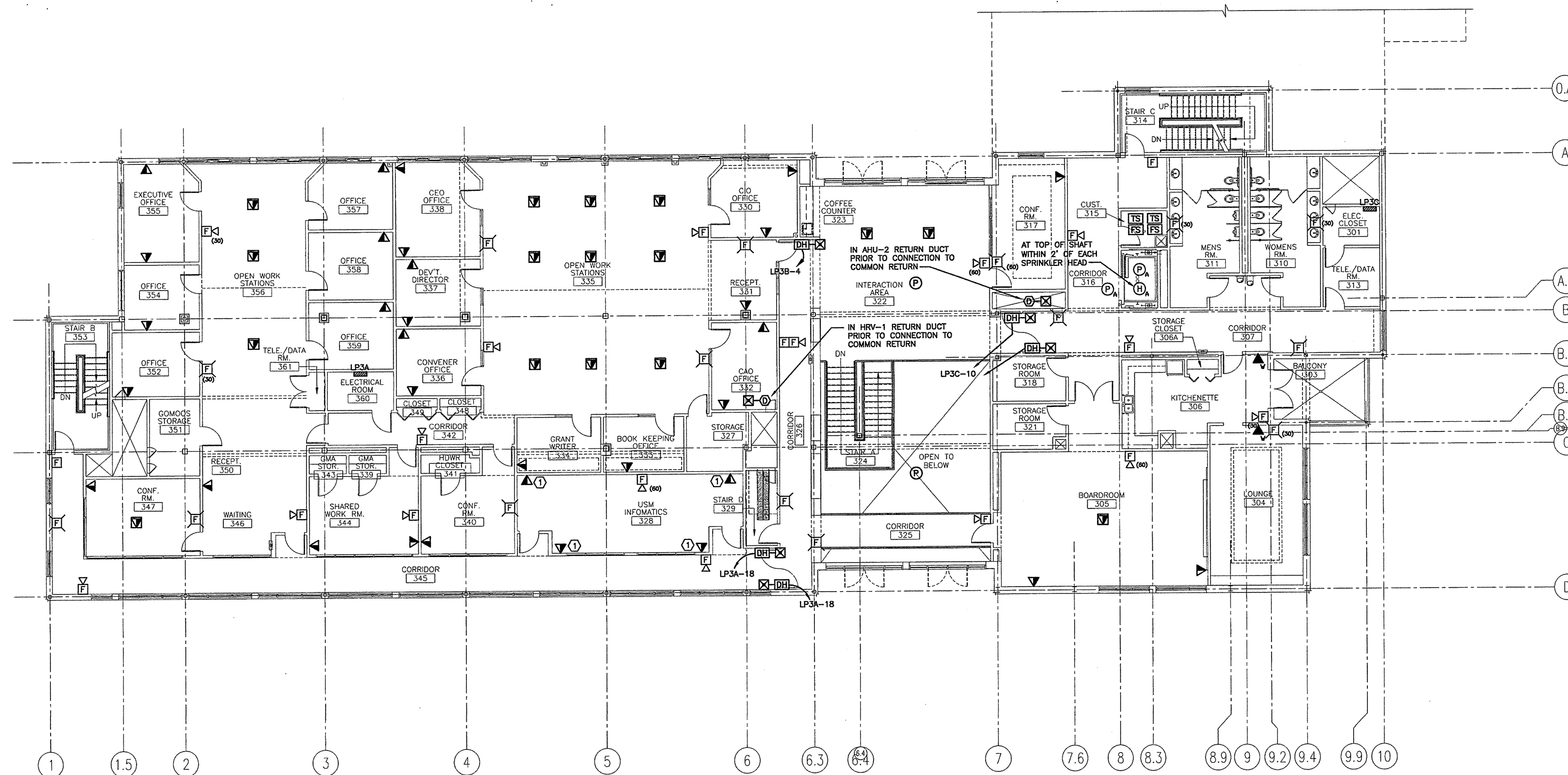


**NOTES:**

- SEE SHEET E-001 FOR LEGEND AND GENERAL NOTES.
- UNDER FLOOR VOICE/DATA OUTLETS SHALL BE A COMBINATION POWER & VOICE/DATA POKE-THRU DEVICE EXTENDING INTO ACCESSIBLE CEILING ON FLOOR BELOW.

**KEYED NOTE:**

- PROVIDE A 1" CONDUIT BETWEEN THE COMMUNICATION CHANNEL OF THE 2 CHANNEL RACEWAY SYSTEM TO ABOVE ACCESSIBLE CEILING. SEE EP103 FOR LOCATION OF MULTICHANNEL RACEWAY SYSTEM.



|                                                                                                                                                         |                         |                        |
|---------------------------------------------------------------------------------------------------------------------------------------------------------|-------------------------|------------------------|
| 0                                                                                                                                                       | ISSUED FOR CONSTRUCTION | 10-23-03               |
| REV.                                                                                                                                                    | DESCRIPTION             | DATE                   |
| <b>ISSUED FOR CONSTRUCTION</b><br><b>10-23-03</b>                                                                                                       |                         |                        |
| CURRENT ISSUE STATUS:                                                                                                                                   |                         |                        |
| PROJECT NORTH                                                                                                                                           |                         |                        |
| <b>SMRT</b><br>ARCHITECTURE ENGINEERING PLANNING<br>144 Fore Street P.O. Box 618<br>Portland, Maine 04104<br>tel. (207) 772-3846<br>fax. (207) 772-1070 |                         |                        |
| <b>THE GULF OF MAINE RESEARCH INSTITUTE</b><br>PORTLAND, MAINE                                                                                          |                         |                        |
| PROJECT: <b>THIRD FLOOR SYSTEMS PLAN</b>                                                                                                                |                         |                        |
| SHEET TITLE:                                                                                                                                            |                         |                        |
| SCALE:                                                                                                                                                  | 1/8" = 1'-0"            | DATE: 10-23-03         |
| PROJECT MANAGER:                                                                                                                                        | DRL                     | GRAPHIC SCALE: 0" = 1' |
| JOB CAP/DRAWN:                                                                                                                                          | SDL/LAM                 |                        |
| A/E OF RECORD:                                                                                                                                          | JPP                     | SHEET No.              |
| SMRT CAD FILE:                                                                                                                                          | EY103-03034             | <b>EY103</b>           |
| PROJECT No.                                                                                                                                             | 03034                   |                        |

**A1 THIRD FLOOR PLAN**

1/8" = 1'-0"