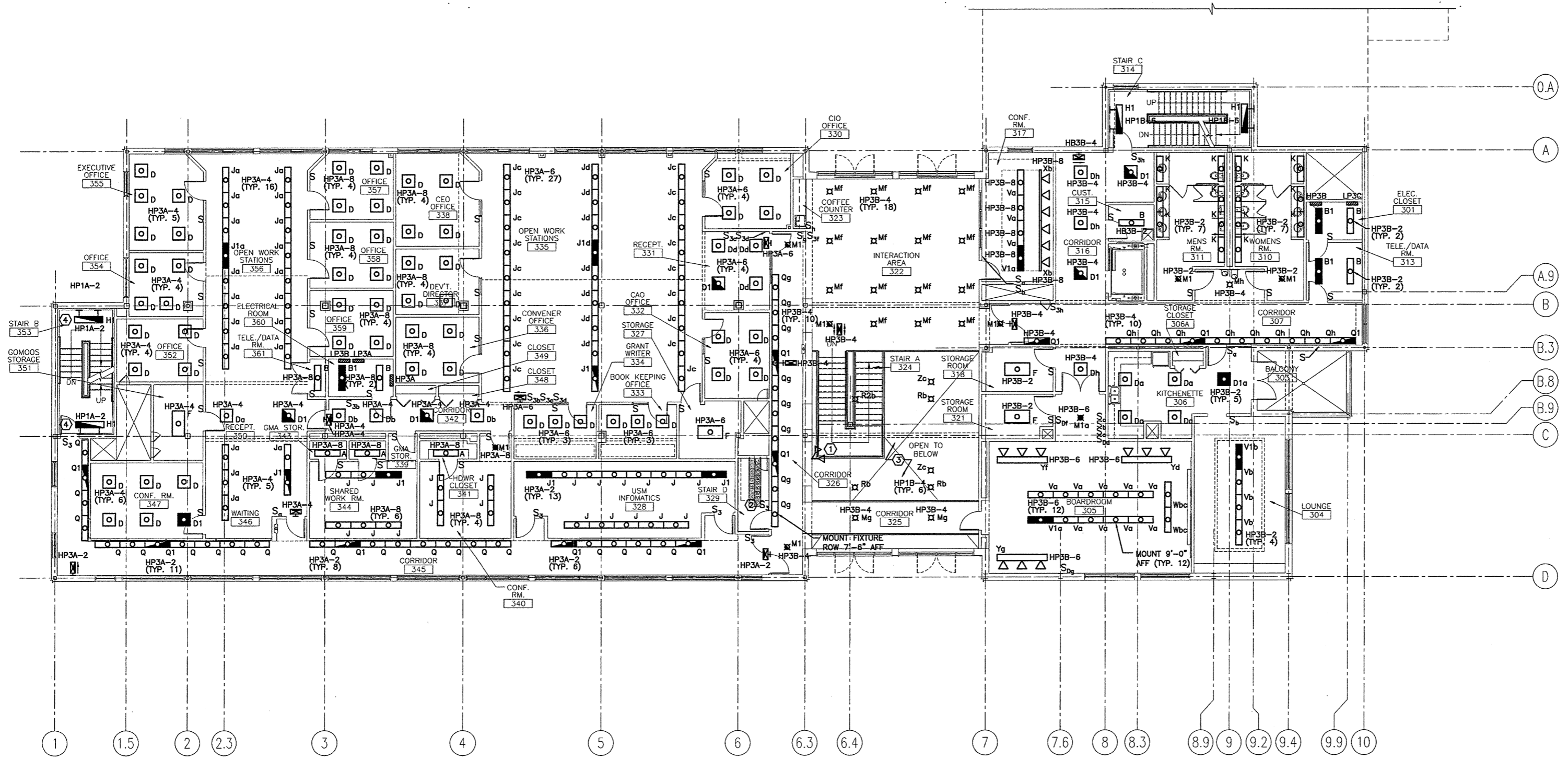


- NOTES:**
- SEE SHEET E-001 FOR LEGEND AND GENERAL NOTES.
 - FOR LOCATION OF HP1A AND HP1B SEE EL101.
- KEYED NOTES:**
- MOUNT REMOTE EMERGENCY HEADS 8'-6" ABOVE STAIR LANDING. REMOTE HEADS ARE POWERED FROM BATTERY UNIT ON LANDING BELOW. SEE EL102 FOR LOCATION.
 - FOR LIGHT FIXTURE AND OTHER 3-WAY SWITCH LOCATION SEE EL104.
 - LIGHTS ARE CONTROLLED FROM 3-WAY SWITCHES ON FIRST FLOOR. SEE EL101 FOR LOCATIONS.
 - MOUNT 7'-3" AFF.



0	ISSUED FOR CONSTRUCTION	10-23-03
REV.	DESCRIPTION	DATE

ISSUED FOR CONSTRUCTION
10-23-03

CURRENT ISSUE STATUS:

SM RT
 ARCHITECTURE ENGINEERING PLANNING
 144 Fore Street, P.O. Box 618
 Portland, Maine 04104
 tel. (207) 772-3846
 fax. (207) 772-1070

THE GULF OF MAINE
RESEARCH INSTITUTE
 PORTLAND, MAINE

THIRD FLOOR
LIGHTING PLAN

SHEET TITLE:	SCALE: 1/8" = 1'-0"	DATE: 10-23-03
PROJECT MANAGER: DRL	JOB CAP/DRAWN: SDL	GRAPHIC SCALE: 0" = 1'
A/E OF RECORD: JPP	SMRT CAD FILE: EL103-03034	SHEET No. EL103
PROJECT No. 03034		

A1 FLOOR PLAN

1/8" = 1'-0"