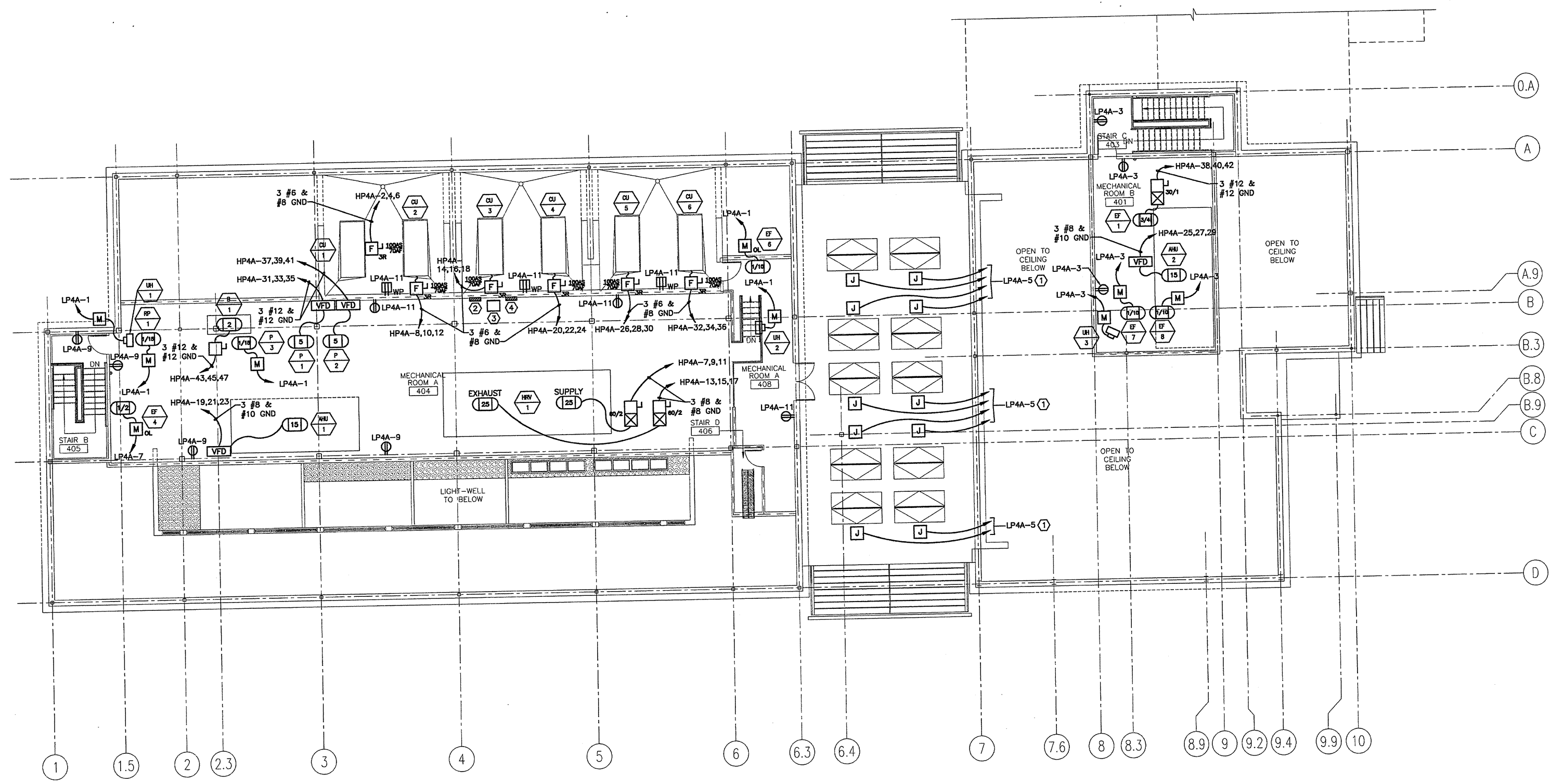


**NOTE:**  
1. SEE SHEET E-001 FOR LEGEND AND GENERAL NOTES.

- KEYED NOTES:**
- ① PROVIDE 120V CIRCUIT FOR ROOF HATCH MOTOR.
  - ② HP4A, 60DA 480Y/277V
  - ③ T-4, 30KVA 480-208/120V
  - ④ LP4A, 100A 208Y/120V



0	ISSUED FOR CONSTRUCTION	10-23-03
REV.	DESCRIPTION	DATE
<b>ISSUED FOR CONSTRUCTION</b> 10-23-03		
CURRENT ISSUE STATUS:		
PROJECT NORTH		ARCHITECTURE ENGINEERING PLANNING
		<b>SMRT</b> SMRT 144 Fore Street/P.O. Box 616 Portland, Maine 04104 tel. (207) 773-3846 fax. (207) 772-1070
<b>THE GULF OF MAINE RESEARCH INSTITUTE</b> PORTLAND, MAINE		
PROJECT: <b>MEZZANINE FLOOR POWER PLAN</b>		
SHEET TITLE: 1/8" = 1'-0" DATE: 10-23-03		
PROJECT MANAGER: DRL	GRAPHIC SCALE: 0" = 1'	
JOB CAP/DRWING: SDL/LAM/JAC		
A/E OF RECORD: JPP		SHEET No.
SMRT CAD FILE: EP104-03034		<b>EP104</b>
PROJECT No. 03034		

**A1** MEZZANINE FLOOR PLAN  
1/8" = 1'-0"