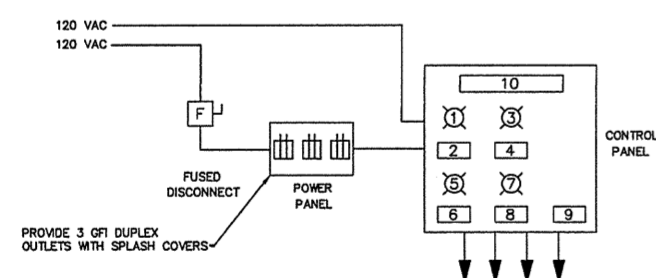
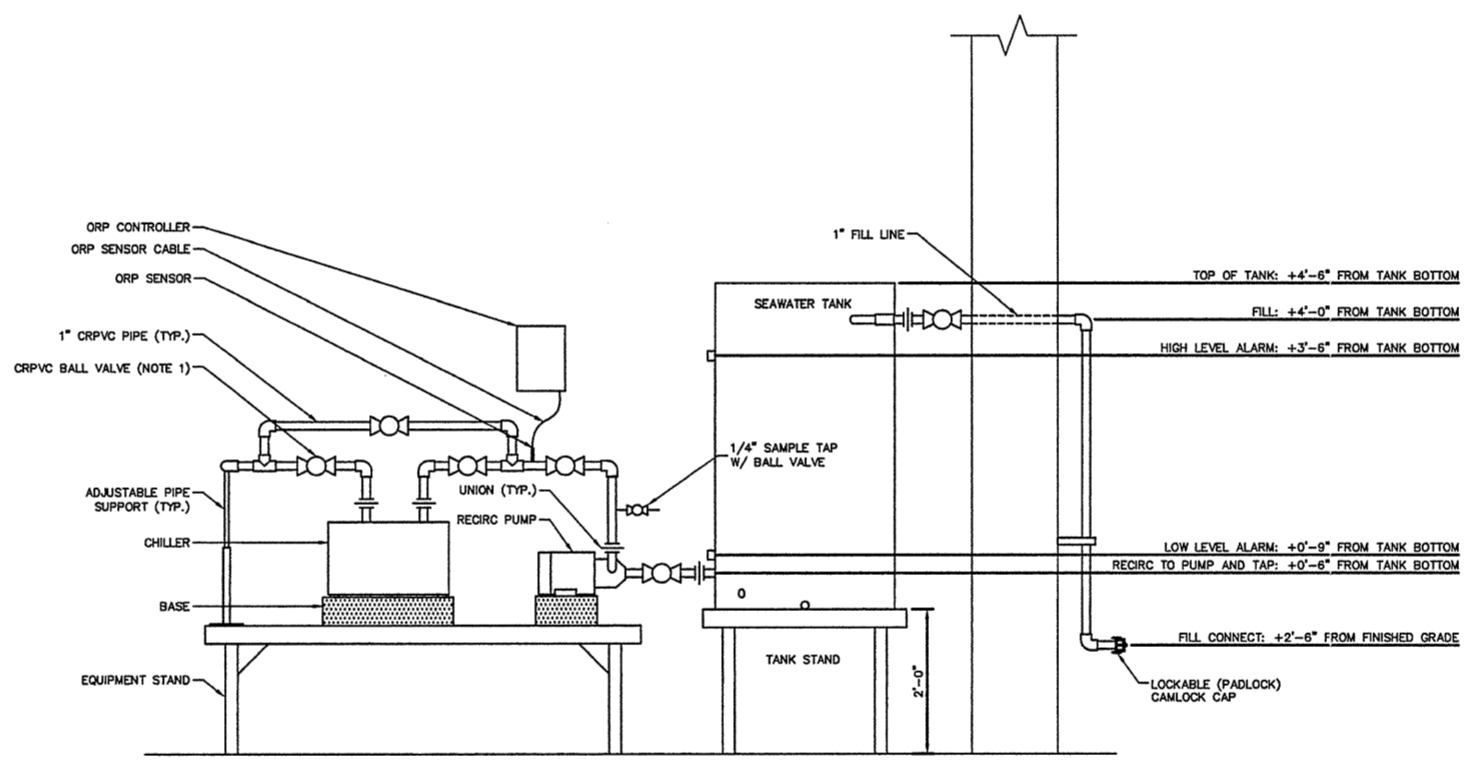
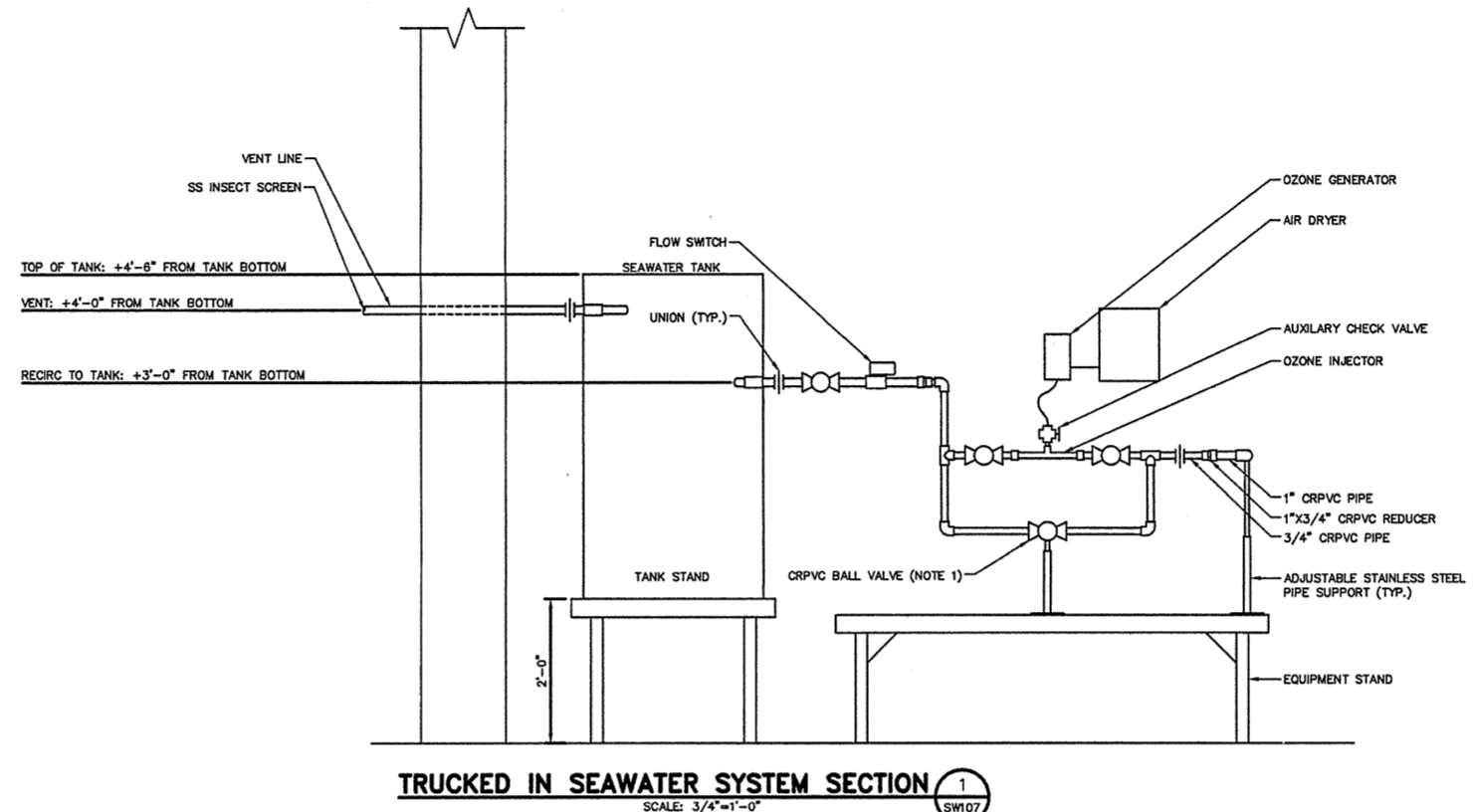
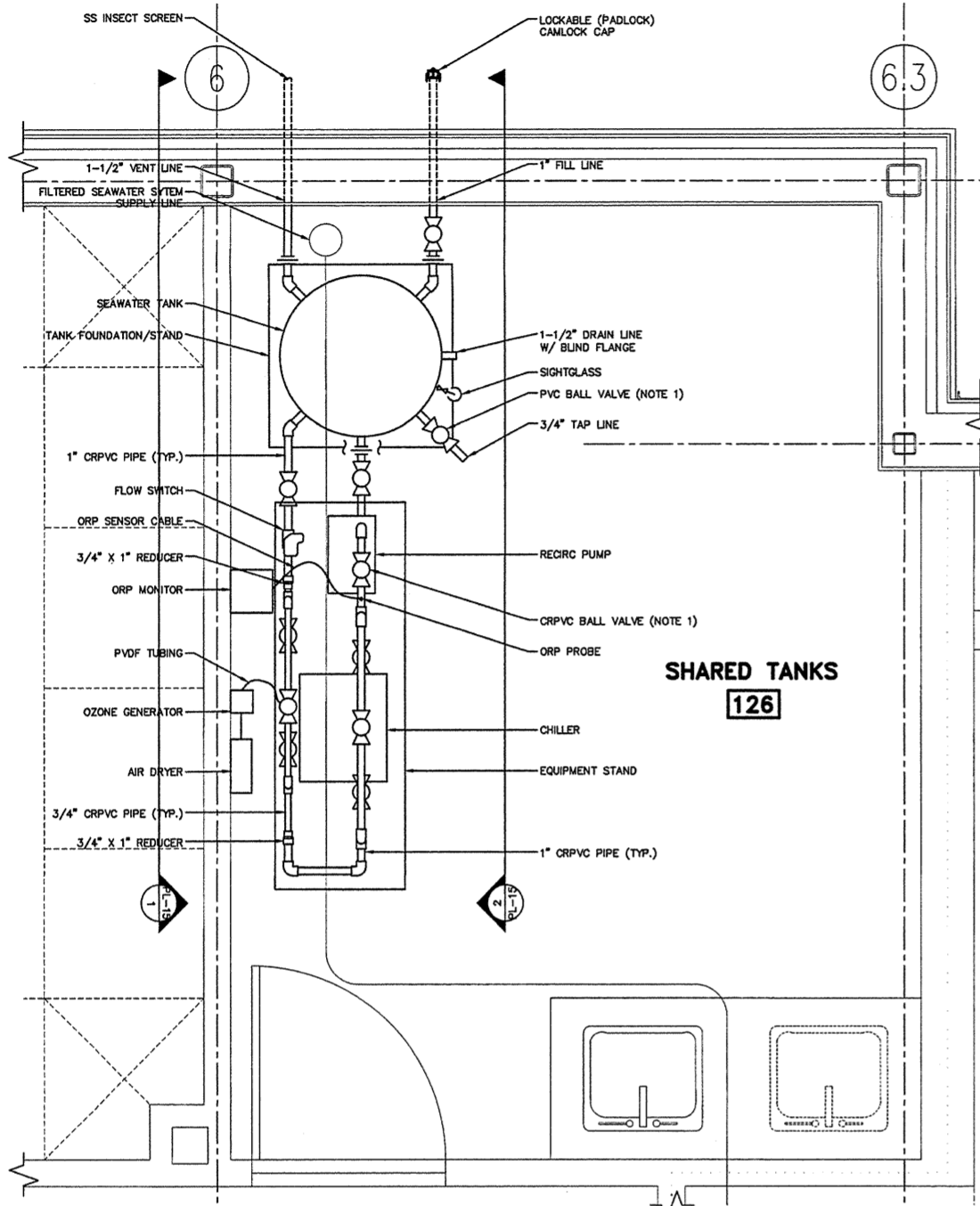


**NOTE:**  
 1. ALL PIPE AND VALVES ON RECIRC PIPING SHALL BE CRPVC (XLTPVC). PIPE AND VALVES ON TANK FILL, VENT, DRAIN, AND TAP SHALL BE PVC. PIPING SHALL UTILIZE A COMBINATION OF UNIONS AND FLANGES TO ALLOW COMPLETE DISASSEMBLY FOR CLEANING INSIDE OF PIPE. WHEN PIPE IS DISASSEMBLED, PIPE SEGMENTS SHALL CONTAIN NO MORE THAN ONE FITTING OR CHANGE IN DIRECTION



- KEY:**
1. PILOT LIGHT, BLUE
  2. LABEL, "SEAWATER SYSTEM ENERGIZED"
  3. PILOT LIGHT, RED
  4. LABEL, "NO-FLOW ALARM"
  5. PILOT LIGHT, RED
  6. LABEL, "HIGH TANK LEVEL"
  7. PILOT LIGHT, RED
  8. LABEL, "LOW TANK LEVEL"
  9. LABEL, "THIS PANEL CONTAINS MULTIPLE POWER SOURCES"
  10. LABEL, "TRUCKED-IN SEAWATER SYSTEM CONTROL PANEL"

0	ISSUED FOR CONSTRUCTION	10/23/03
REV.	DESCRIPTION	DATE

**ISSUED FOR CONSTRUCTION**  
 10/23/03

CURRENT ISSUE STATUS:

PROJECT NORTH

**SMRT** ARCHITECTURE ENGINEERING PLANNING

144 Fore Street/P.O. Box 618  
 Portland, Maine 04104  
 tel. (207) 772-3846  
 fax. (207) 772-1070

**THE GULF OF MAINE RESEARCH INSTITUTE**  
 PORTLAND, MAINE

**MECHANICAL DETAILS**

SHEET TITLE: SW109

SCALE: 1/8" = 1'-0"	DATE:
DESIGNED BY: JSC	GRAPHIC SCALE: 0" 1"
DRAWN BY: JSC	SHEET No.
CHECKED BY: MCJ	FILE: PL115-03034
PROJECT No. 03034	