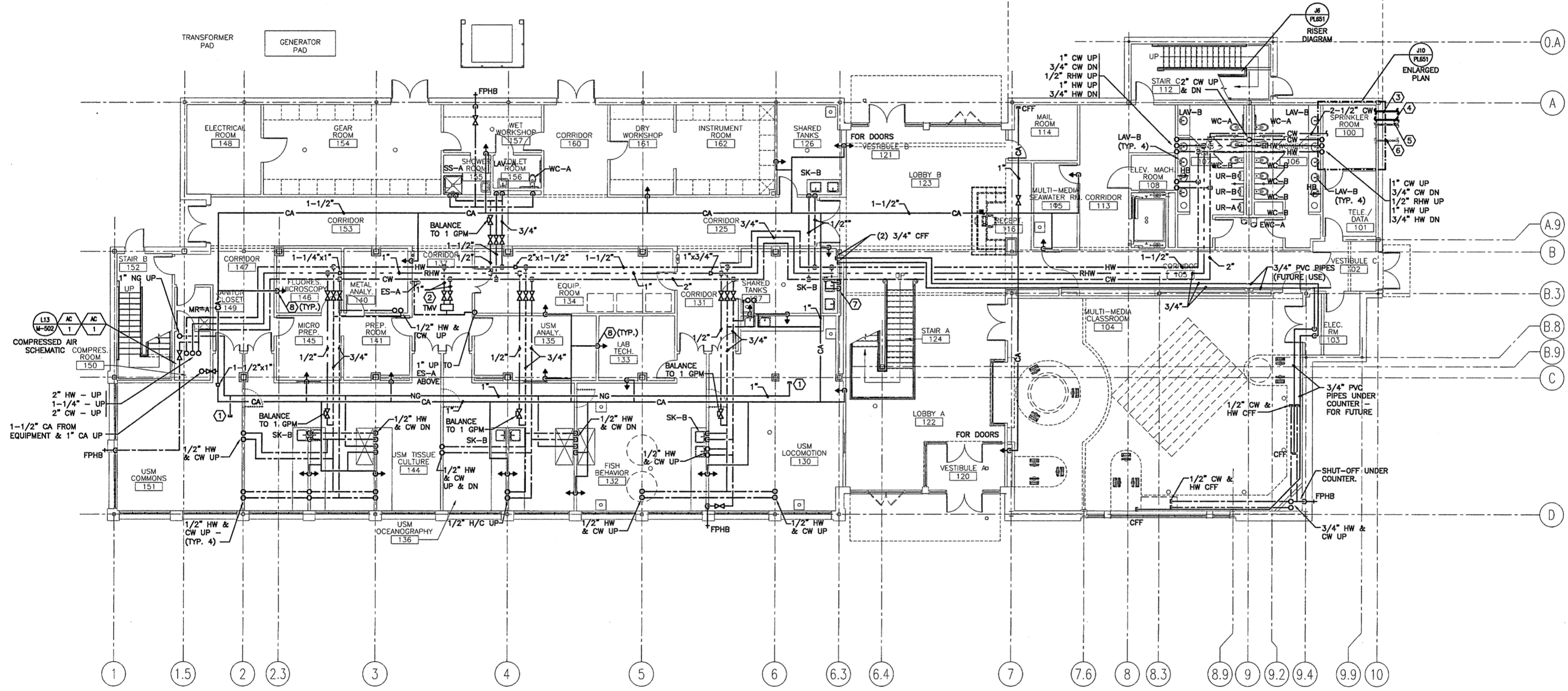


NOTE:
1. SEE SHEET M-001 FOR LEGEND AND ABBREVIATIONS.

- KEYED NOTES:**
- ① 3/4" NG STUB, VALVE & CAP FOR FUTURE USE.
 - ② 1" HOT & 1" COLD WATER TO TMV (LEONARD TM-800). RUN 1" TO EACH (2) ES-A.
 - ③ 2" CW TO COAST GUARD STATION.
 - ④ 4" CW ENTRANCE.
 - ⑤ NEW NATURE GAS SERVICE BY UTILITY CO.
 - ⑥ 6" FIRE SERVICE BY SPRINKLER CONTRACTOR.
 - ⑦ 1/2" HW/CW DOWN TO SK-B. 1" CW, 1/2" HW UP TO FUTURE AUTOCLAVE.
 - ⑧ 1/2" CA DROP IN WALL. SEE N9/M-502.



0	ISSUED FOR CONSTRUCTION	10-23-03
REV.	DESCRIPTION	DATE

ISSUED FOR CONSTRUCTION
10-23-03

CURRENT ISSUE STATUS:

PROJECT NORTH

DAVID B. HENNECHER
#2521
PROFESSIONAL ENGINEER
STATE OF MAINE

SMRT ARCHITECTURE ENGINEERING PLANNING
SMART
144 Fore Street P.O. Box 618
Portland, Maine 04104
tel. (207) 772-3846
fax. (207) 772-1070

THE GULF OF MAINE RESEARCH INSTITUTE
PORTLAND, MAINE

FIRST FLOOR SUPPLY PIPING PLAN

SHEET TITLE:	SCALE:	DATE:
PROJECT MANAGER:	GRAPHIC SCALE:	
JOB CAP/DRAWN:		
A/E OF RECORD:	SHEET No.	
SMRT CAD FILE:	PROJECT No.	

PL105

A1 FLOOR PLAN

1/8" = 1'-0"