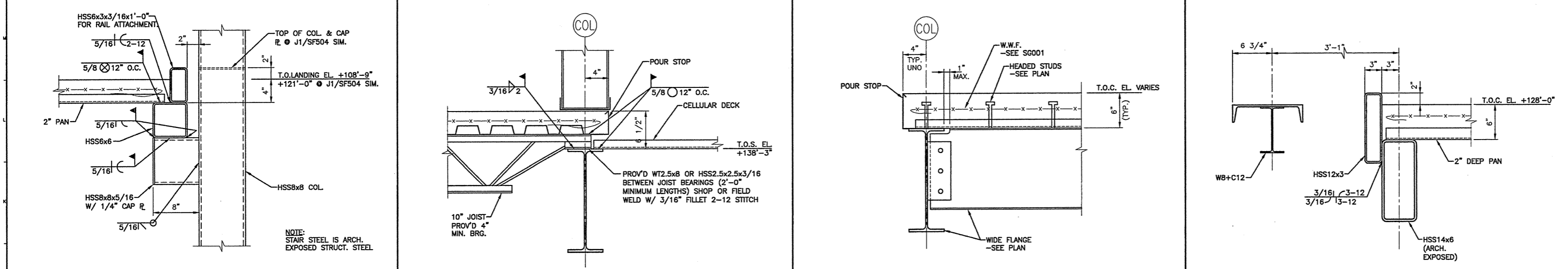
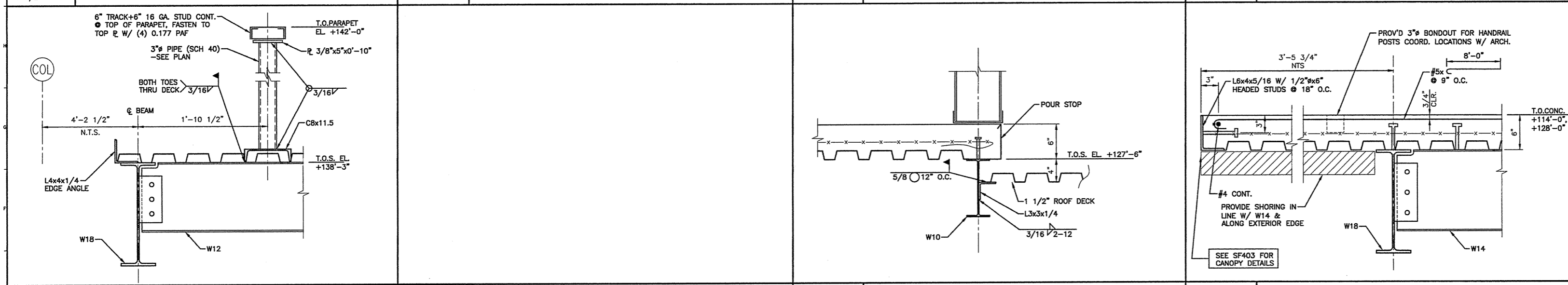


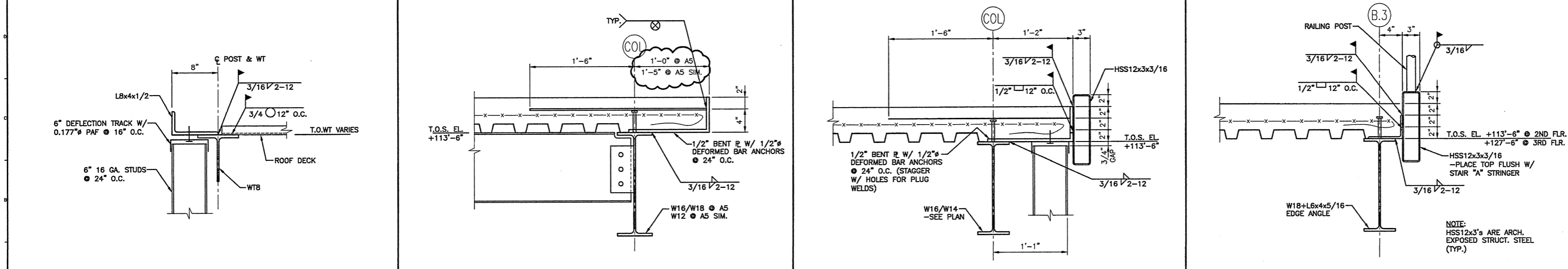
N1 SECTION 1/4"=1'-0"
 N5 SECTION 1 1/2"=1'-0"
 N9 -
 N14 SECTION 1 1/2"=1'-0"



J1 SECTION 1 1/2"=1'-0"
 J5 SECTION 1 1/2"=1'-0"
 J9 SECTION 1 1/2"=1'-0"
 J14 SECTION 1 1/2"=1'-0"



E1 SECTION 1 1/2"=1'-0"
 E5 -
 E9 SECTION 1 1/2"=1'-0"
 E14 SECTION 1 1/2"=1'-0"

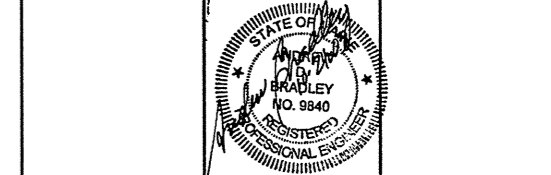


A1 SECTION 1 1/2"=1'-0"
 A5 SECTION 1 1/2"=1'-0"
 A9 SECTION 1 1/2"=1'-0"
 A14 SECTION 1 1/2"=1'-0"

GENERAL NOTES:
 1. SEE S0001 FOR STRUCTURAL GENERAL NOTES.

1	ISSUED FOR ADDENDUM 2	9-25-03
0	ISSUED FOR CONSTRUCTION	8-26-03
REV.	DESCRIPTION	DATE

ISSUED FOR ADDENDUM 2
9-25-03



ARCHITECTURE ENGINEERING PLANNING
 SMRT
 144 Fore Street P.O. Box 618
 Portland, Maine 04104
 tel. (207) 772-3846
 fax. (207) 772-1070

THE GULF OF MAINE RESEARCH INSTITUTE
 PORTLAND, MAINE

FRAMING SECTIONS AND DETAILS

SHEET TITLE:	AS NOTED	DATE:	8-26-03
SCALE:	DRL	GRAPHIC SCALE:	0" = 1'
PROJECT MANAGER:	SDL/TCM		
JOB CAP/DRAWN:	ADB	SHEET No.	SF504
A/E OF RECORD:	SF504-03034		
SMRT CAD FILE:	03034		
PROJECT No.			