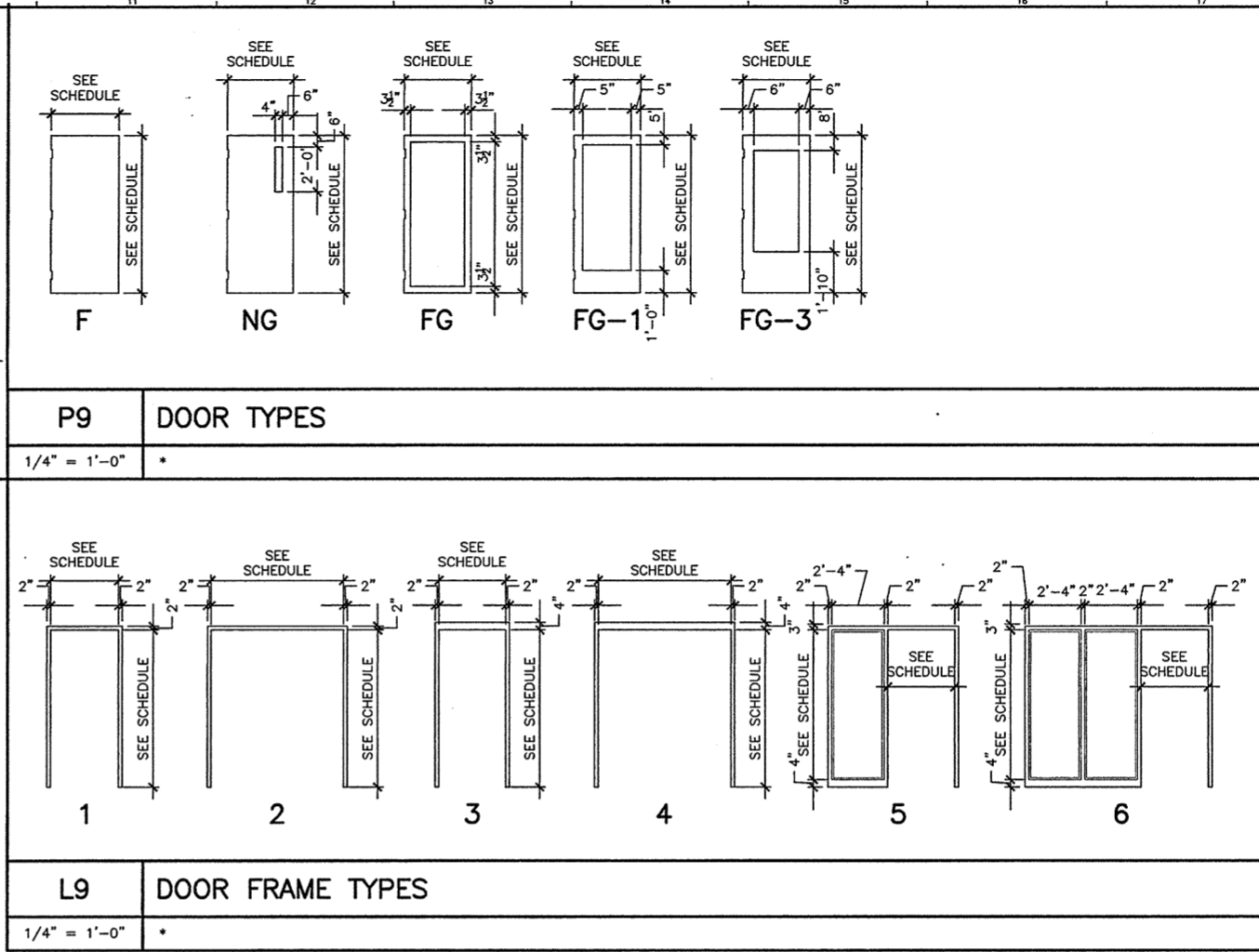


**L1 STOREFRONT DOOR TYPES**  
1/4" = 1'-0"



**P9 DOOR TYPES**  
1/4" = 1'-0"

**L9 DOOR FRAME TYPES**  
1/4" = 1'-0"

**DOOR ABBREVIATIONS**

AL/ALUM	ALUMINUM
HM	HOLLOW METAL
INS	INSULATED
S/S	STAINLESS STEEL
STL	STEEL
TEMP	TEMPERED GLASS
WIRE	WIRE GLASS
SF	STOREFRONT

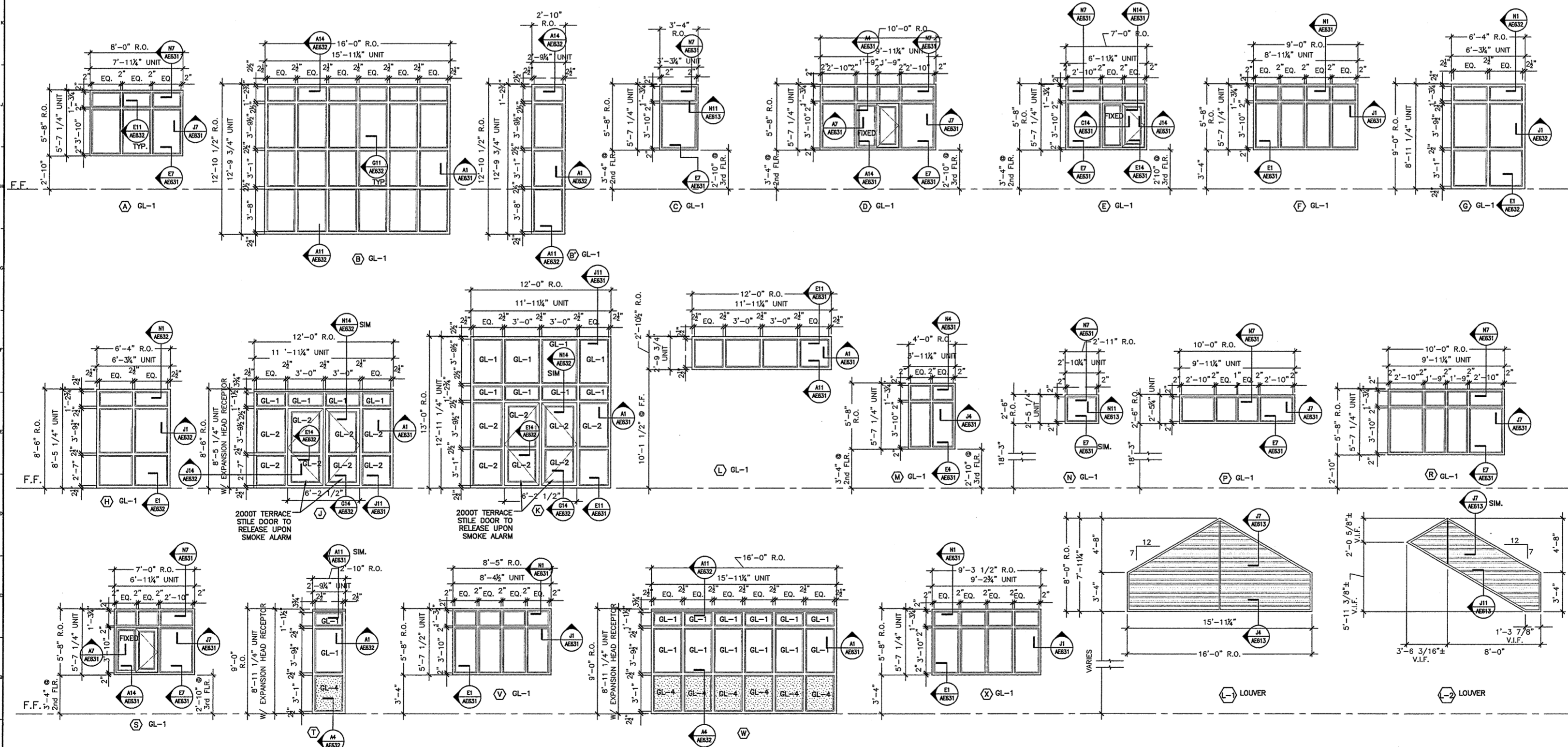
**DOOR NOTES**

- SEE SPECIFICATIONS FOR HARDWARE SET DESCRIPTIONS.
- SEE TITLE SHEET 001 FOR STANDARD ABBREVIATIONS.
- ALL SWINGING DOORS TO BE 1-3/4" THICK (U.N.O.).
- ALL DOORS SHALL BE 3/4" UNDERCUT (TYPICAL) EXCEPT WHEN THERE IS A BOTTOM FRAME OR SILL THRESHOLD OR SPECIFICALLY NOTED OTHERWISE.
- ALL DOORS WITH BOTTOM FRAMES OR SILL THRESHOLDS SHALL HAVE MANUFACTURERS RECOMMENDED STANDARD UNDERCUT.
- GLAZING NOTED ON DOOR SCHEDULE IS FOR THE DOOR AND SIDELIGHTS IN THE FRAME (TYPICAL).

**GLAZING NOTES**

GL-1	TINTED INSULATED
GL-2	TEMP INSULATED
GL-3	ACOUSTIC INSULATED
GL-4	METAL PANEL
GL-5	1/4" CLEAR
GL-6	1/4" CLEAR TEMP
GL-7	1/4" WIRE GLASS

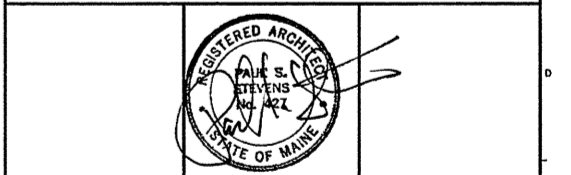
REFER TO SPECIFICATIONS



**A1 EXTERIOR STOREFRONT WINDOW TYPES**  
1/4" = 1'-0"

0	ISSUED FOR CONSTRUCTION	10-23-03
REV.	DESCRIPTION	DATE

**ISSUED FOR CONSTRUCTION**  
10-23-03



**SMRT**  
ARCHITECTURE ENGINEERING PLANNING  
SMRT  
144 Fore Street P.O. Box 618  
Portland, Maine 04104  
Tel. (207) 773-3846  
Fax. (207) 772-1070

**THE GULF OF MAINE RESEARCH INSTITUTE**  
PORTLAND, MAINE

**DOOR, FRAME AND WINDOW TYPES**

SHEET TITLE:	AS NOTED	DATE:	10-23-03
PROJECT MANAGER:	DRL	GRAPHIC SCALE:	0" = 1'
JOB CAP/DRAWN:	SDL		
A/E OF RECORD:	PSS	SHEET No.	
SMRT CAD FILE:	AE612-03034		
PROJECT No.	03034		

**AE612**